

2018

CATALOG

MOTORCYCLE - BICYCLE - ACCESSORIES - SNOW



PROGRIP.COM

P
PROGRIP

OBIETTIVO QUALITÀ TOTALE

Il cliente è il vero datore di lavoro dei dipendenti della Plastiche Cassano, non il principale.

È necessario quindi, da parte di tutti, il massimo impegno e la massima onestà durante tutte le fasi della produzione al fine di ottenere la massima qualità.

Il cliente deve essere sempre soddisfatto della qualità del prodotto e del servizio globale reso dalla Plastiche Cassano.

Tra lavorare bene e lavorare male la differenza non è molta, ma gli effetti a lungo andare possono essere molto dannosi per tutti.

QUALITÀ PLASTICHE CASSANO

1. ESPERIENZA DI 56 ANNI
2. MATERIE PRIME DI PRIMA QUALITÀ DA FORNITORI QUALIFICATI
3. CONTROLLO DI TUTTO IL PROCESSO PRODUTTIVO
4. DOPPIO CONTROLLO DEL PRODOTTO
5. GARE DI CAMPIONATO MONDIALE COME TESTS DI COLLAUDO
6. ASSICURAZIONE RESPONSABILITÀ CIVILE SUI PRODOTTI

QUALITY CONTROL ON ALL OPERATIONAL STAGE OF PRODUCTION

The customer is the real employer of Plastiche Cassano staff.

To give the customer the maximum satisfaction of service and quality, it is necessary that we all in Plastiche Cassano commit ourselves in full, with honesty and severe control during all phases of production in order to obtain the best of quality.

There is not much difference between working well or badly, but in the long term unsatisfactory results can be very damaging for us all.

FEATURES OF THE PLASTICHE CASSANO COMPANY

1. 54 YEARS OF EXPERIENCE
2. TOP QUALITY RAW MATERIALS FROM HIGHLY REPUTABLE SUPPLIERS
3. QUALITY CONTROL IN ALL PHASES OF PRODUCTION
4. THOROUGH CHECK OF PRODUCTS
5. WORLD CHAMPIONSHIP RACES FOR PRODUCTS TESTING
6. INSURANCE COVER ON PRODUCTS



QUALITÀ PLASTICHE CASSANO SECONDO LE NORME EUROPEE EN- 29.000

Ecco come si realizza la qualità del prodotto Plastiche Cassano:

1. Innanzitutto grazie all'esperienza, che la Plastiche Cassano ha accumulato da quando ha cominciato a produrre manopole in plastica nella vecchia sede in via Roma, 13 nel 1961, anno di iscrizione alla Camera di Commercio col n. 84585.

Ma i proprietari della Plastiche Cassano venivano dalla ditta del loro padre Assaghi Francesco, con sede in Cassano Magnago via Mazzel 42, fondata nel 1925 e produttrice di manopole in corno di bufalo, poi subito dopo la seconda guerra mondiale, delle prime manopole in plastica, bachelite e acetato.

Potete vedere le foto della vecchia fabbrica come era nel 1940. Allora si producevano circa 1.000 paia di manopole al giorno, oggi ne produciamo più di 100.000 paia al giorno, con un'esportazione del 70 %.



PRODUCT QUALITY CONSCIOUSNESS OF THE PLASTICHE CASSANO AS PER EN - 29.000

How we obtain the high standard of quality of our products:

1. Mainly we have achieved it through long experience. We started to manufacture our products in 1961, in the old factory of via Roma n.13. In the same year we became members of the Chamber of Commerce with number 84585. However the owners of Plastiche Cassano originated from the family business founded by the grandfather, Mr. Francesco Assaghi. The old company was founded in 1925 and was situated in Cassano Magnago, via Mazzel, 42. It was specialized in the production of handlebar grips made with buffalo horn. Immediately after World War II, the first handlebar grips in plastic, bachelite and acetate were produced. (Please see the photographs showing the old factory in 1940). In those days the production capacity was of about 1.000 pairs of grips per day. Nowadays we produce over 100.000 pairs of grips per day. 70% of our products are exported worldwide.



2. Per secondo, è importante usare materie prime di prima qualità, acquistate da fornitori fidati e qualificati.

La Plastiche Cassano effettua il controllo di qualità sul materiale acquistato sia tramite prove interne, sia tramite laboratori esterni imparziali che rilasciano certificati di qualità. Il materiale è atossico come da norme En/71 e Reach. Lo stoccaggio delle materie prime, avviene in locali chiusi e non all'aperto, come fanno molti, per prevenire eventuali deterioramenti dovuti a cause atmosferiche.



2. It is vital for us to use raw materials of top quality, bought from highly reputable suppliers, with consistency of top quality. The raw materials comply with the European safety regulations. Standard EN/71 (non toxic) and Reach.

The Plastiche Cassano Company execute severe quality control over the raw material both in house, and at specialized laboratories which issue certificates of quality. Most of our competitors stock the raw materials in the open. We don't. We stock only indoors in order to prevent deterioration caused by atmospheric conditions.

| IN GRANULI | PLASTIFICATO | | | |
|-------------|--------------|-----|-----|-----|
| IN PELLETS | PLASTIFIED | | | |
| IN GRANULOS | PLASTINI | | | |
| GRANULAT | WEICH | | | |
| 1,33 | 65 | 100 | 400 | -55 |
| 1,38 | 65 | 90 | 370 | -50 |
| 1,18 | 53 | 85 | 460 | -55 |
| 1,17 | 80 | 80 | 480 | -54 |
| 1,16 | 45 | 75 | 500 | -60 |

Per ogni prodotto, abbiamo una scheda tecnica di riferimento...
The above mentioned products could be also available in an amount...
Sicron® Granuli plastificati di PVC
Applicazioni principali



3. Il processo di produzione è stabilito da norme scritte ben precise a disposizione e conoscenza di tutto il personale. Dalla progettazione delle attrezzature, alla spedizione della merce prodotta, tutto è prestabilito e controllato.



4. Il controllo dei pezzi prodotti avviene due volte: la prima, durante la stessa produzione, quando ogni operatore ha il tempo necessario e l'obbligo di controllare visivamente tutti i pezzi prodotti e ogni 100 pezzi deve effettuare il controllo dimensionale ed estetico con gli appositi strumenti. Una seconda volta i pezzi vengono poi controllati prima dell'imballaggio dove un'operatore effettua il secondo controllo dimensionale ed estetico di 3 pezzi ogni scatola, cioè circa ogni 100 / 200 pezzi secondo i modelli.

Per la spedizione si usano robusti cartoni di misura piccola o media per offrire una buona maneggevolezza ed una adeguata protezione dei pezzi durante il trasporto.



3. The production process is established by firm written rules, and circulated to all our staff. From the tool making department to the produced goods departments, everything is properly planned and controlled.

4. The quality control of the produced pieces takes place twice: the first one during the production phase, when each operator has the necessary time and the obligation of controlling every single piece produced, and every 100 pieces has to check the aesthetical and dimensional features with specialized instruments. The second quality control takes place before packing the products, when an operator performs a further control of dimensions and finishing of 3 pieces for every single carton, in total a check varying from 100 to 200 pieces according to the different model of grips.

The products are boxed in strong cartons of small or medium sizes in order to offer easy handling, and adequate protection during the transport.





5. Gare come test.

La Plastiche Cassano da ormai 25 anni sottopone i propri prodotti, sotto il marchio ProGrip, al collaudo più severo e attendibile e cioè quello delle gare dei vari campionati mondiali. Da queste esperienze vengono tratti i suggerimenti per migliorare la produzione di serie.



5. Tests during races.

For the last 25 years we have submitted our products marketed under the trade mark "Pro Grip", for race testing at events up to world championship level in three fields. From these experienced champions we gather useful informations for ever improving the quality of our mass production.

Franco PICCO 1991-92 Darryl LA PORTE 1991-92 Loris CAPIROSSI 2003 Simone CORSI 2008



Max NAGL 2010 Tony CAIROLI 2010 Tanel LEOK 2011 Harri KULLAS 2013



Alex TONKOV 2014 Tim GAJSER 2015 Romain FEBVRE 2016 Tony CAIROLI 2017



PLASTICHE CASSANO

INFORMATICA S.P.A. - VIA S. TAMBURNO, 14 - 20090 CASARANO MARCONI (MI) - TEL. 02/90401

SPONSORING PRODOTTI TEMPORANEI - PLASTICHE CASSANO MARCONI (MI) - VIA S. TAMBURNO, 14 - 20090 CASARANO MARCONI

PLASTICHE CASSANO

INFORMATICA S.P.A. - VIA S. TAMBURNO, 14 - 20090 CASARANO MARCONI (MI) - TEL. 02/90401

SPONSORING PRODOTTI TEMPORANEI - PLASTICHE CASSANO MARCONI (MI) - VIA S. TAMBURNO, 14 - 20090 CASARANO MARCONI

PLASTICHE CASSANO

INFORMATICA S.P.A. - VIA S. TAMBURNO, 14 - 20090 CASARANO MARCONI (MI) - TEL. 02/90401

SPONSORING PRODOTTI TEMPORANEI - PLASTICHE CASSANO MARCONI (MI) - VIA S. TAMBURNO, 14 - 20090 CASARANO MARCONI

PLASTICHE CASSANO

INFORMATICA S.P.A. - VIA S. TAMBURNO, 14 - 20090 CASARANO MARCONI (MI) - TEL. 02/90401

SPONSORING PRODOTTI TEMPORANEI - PLASTICHE CASSANO MARCONI (MI) - VIA S. TAMBURNO, 14 - 20090 CASARANO MARCONI

PLASTICHE CASSANO

INFORMATICA S.P.A. - VIA S. TAMBURNO, 14 - 20090 CASARANO MARCONI (MI) - TEL. 02/90401

SPONSORING PRODOTTI TEMPORANEI - PLASTICHE CASSANO MARCONI (MI) - VIA S. TAMBURNO, 14 - 20090 CASARANO MARCONI



6. Dopo la spedizione tutti i prodotti Plastiche Cassano sono coperti da assicurazione responsabilità civile per un massimo di euro 2.000.000 - (\$ 2.500.000) per ogni sinistro o danno causato o per ogni persona deceduta per cause imputabili al nostro prodotto.

Sopra tutto questo c'è la serietà di tutti i componenti della ditta Plastiche Cassano, dai titolari all'ultimo dipendente che ci consente di offrire un prodotto di qualità ad un prezzo ragionevole e di avere tra i nostri clienti da anni le ditte più importanti e famose nel mondo delle due ruote.



6. All products supplies are covered by insurance for a maximum liability of euro 2.000.000 - (\$ 2.500.000) for any possible damage, accident or death that should be attributed to our products.

The whole process is accompanied by the responsible attitude of all cooperators of the Plastiche Cassano company: from the proprietors to the last employee. This sound attitude allows us to offer a high quality product at a reasonable price and to proudly include among our customers the most important and famous companies in the world of two wheeled transport - general industry - hospital and agriculture.

ITALIANA

R.C. PRODOTTI

Agente di: CASARANO S.p.A.

Compagnia: PLASTICHE CASSANO S.p.A.

Indirizzo: VIA S. TAMBURNO, 14 - 20090 CASARANO MARCONI (MI) - TEL. 02/90401

| | | | | |
|---------------------|--|-------------|--------|-------------|
| PREMIO | Fatturato medio annuo (Italia, U.S.A., Canada e Messico) | 4.200.000 € | 0,75 % | 4.650,00 € |
| | Fatturato U.S.A., Canada e Messico | 1.400.000 € | 7,25 % | 10.200,00 € |
| Totale premio annuo | | | | 14.850,00 € |

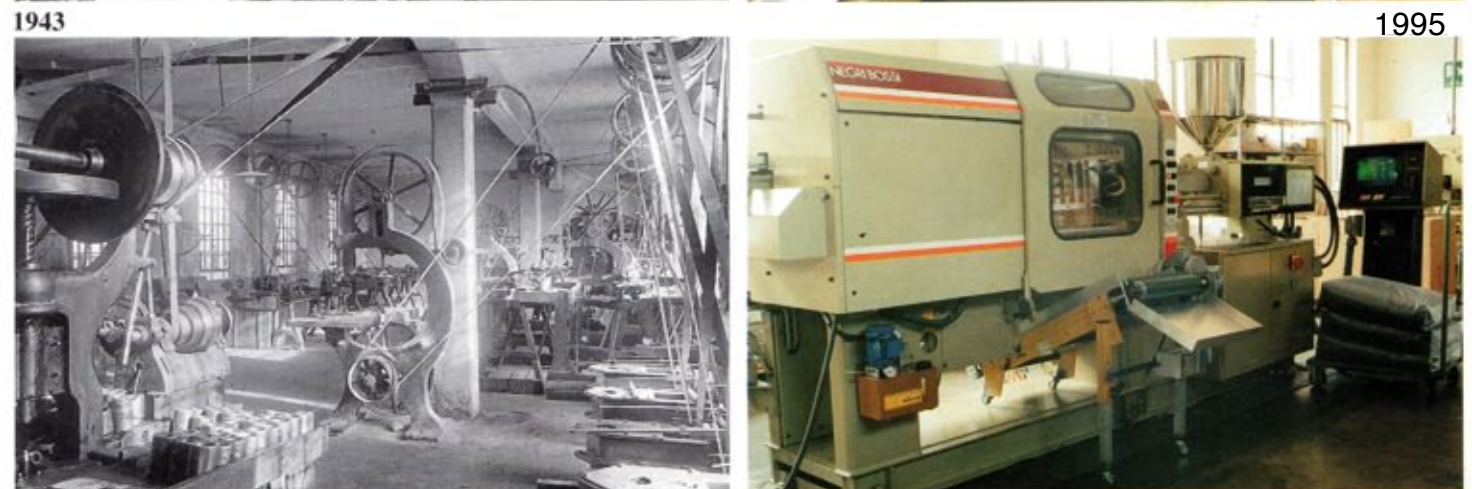
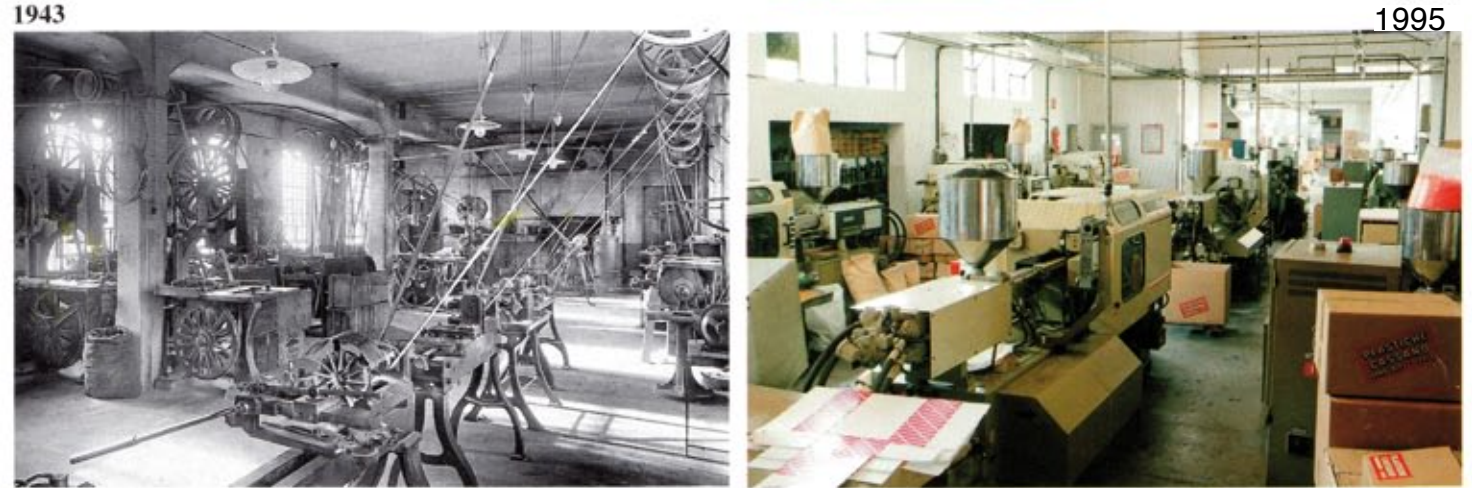
IL CONTRAENTE

La presente polizza è stipulata in esecuzione di quanto stabilito dall'art. 18 del Regolamento di Assicurazione del Gruppo Italcasse S.p.A.

14 MAG. 2008



2017



PLASTICHE CASSANO HANDGRIPS - ITALY

PLASTICHE CASSANO HANDGRIPS - ITALY

CATALOG 2018

TABLE OF CONTENTS

| | |
|--------------------------------|-----|
| - ABOUT PLASTICHE CASSANO----- | 02 |
| - TRIPLE DENSITY MX GRIPS----- | 08 |
| - DUO DENSITY MX GRIPS----- | 11 |
| - FLUO GRIPS----- | 13 |
| - ROAD GRIPS----- | 16 |
| - SCS 800 MX & 700 ROAD----- | 23 |
| - SCOOTER GRIPS----- | 26 |
| - CUSTOM GRIPS----- | 29 |
| - 3200 FL----- | 34 |
| - 3200 LS----- | 46 |
| - 3303 FL----- | 38 |
| - 3303 TR----- | 40 |
| - CARBON VERSION----- | 46 |
| - 3404 FL----- | 48 |
| - 3400 TR----- | 50 |
| - 3201 FL----- | 52 |
| - 3201 TR----- | 54 |
| - 3204----- | 56 |
| - 3204 FL----- | 58 |
| - 3301----- | 60 |
| - 3101 KIDS----- | 62 |
| - GOGGLES + ROLL OFF----- | 66 |
| - ROLL OFF EXTRA VISION----- | 68 |
| - 3000 VISOR SHIELD----- | 69 |
| - LENSES----- | 70 |
| - HELMETS----- | 72 |
| - PANTS----- | 90 |
| - JERSEYS----- | 92 |
| - 9011 JACKETS----- | 98 |
| - MX GLOVES----- | 101 |
| - ROAD GLOVES----- | 106 |
| - PROTECTIVE GEAR----- | 108 |
| - NECK BRACE----- | 112 |
| - HAND GUARD----- | 114 |
| - ACCESSORIES----- | 117 |
| - BAGS----- | 123 |
| - SNOW WORLD----- | 126 |
| - PANTS, SHIRTS----- | 135 |
| - SUNGLASSES----- | 136 |
| - BICYCLE GRIPS----- | 141 |
| - BABY CYCLE GRIPS----- | 142 |
| - TOURING CYCLE GRIPS----- | 143 |
| - OLD STYLE GRIPS----- | 144 |
| - MTB----- | 145 |
| - ACCESSORIES - INDUSTRY----- | 154 |

2017

MXGP

WORLD CHAMPION



TONY CAIROLI AND PROGRIP
Together again World Champion!

MX GRIPS



MX GRIPS TRIPLE DENSITY

HARDNESS

HARD SH 58 Inside
SOFT SH 20 - 15 Outside

COLORED BASE

Art. 788

size: ø mm 22 25
Long mm 115
Triple Density grip
Extra slim
No waffle



GREY BASE

Art. 788

size: ø mm 22 25
Long mm 115
Triple Density grip
Extra slim
No waffle



WHITE BASE

Art. 788

size: ø mm 22 25
Long mm 115
Triple Density grip
Extra slim
No waffle



SPECIAL EDITION

Art. 788

size: ø mm 22 25
Long mm 115
Triple Density grip
Extra slim
No waffle



Made in Italy

AVAILABLE
COLORS
Pag.14-15



Packaging quantity:
40 x Box

MX GRIPS TRIPLE DENSITY

HARDNESS

HARD SH 58 Inside
SOFT SH 20 - 15 Outside



BLACK BASE

Art. 790
size: ø mm 22 25
Long mm 115
Triple Density grip
No waffle

The 790 grip features:
A slimmer design with a reverse waffle
and the soft GEL area is present around
the full diameter of the grip.



GREY BASE

Art. 790
size: ø mm 22 25
Long mm 115
Triple Density grip
No waffle

Made in Italy



Packaging quantity:
40 x Box

**AVAILABLE
COLORS
Pag.14-15**

Firm on the inside, Gel Density towards the palm of your hand and medium density on the ends.
In all Triple Density models, the hard density inner tube and the medium density grip ends flanges help towards maximum grip efficiency. Riders are always looking for SOFT GRIPS that don't slip on the bar. The rule in grip design is that the softer the material the more the grip will slip against the bar. Plastiche Cassano is the company that first offered duo density grips to the Motorcycle world and we try to bring new technical solutions to the market as the need arises. So we decided to design an even stronger inner sleeve to help minimize grip - MADE IN ITALY

MX GRIPS DOUBLE DENSITY

HARDNESS

HARD SH 58 Inside
SOFT SH 15 Outside



COLORED BASE

Art. 791
size: ø mm 22 25
Long mm 115
Half waffle



BLACK BASE

Art. 783
size: ø mm 22 25
Long mm 115
Half waffle



BLACK BASE

Art. 798
size: ø mm 22 25
Long mm 115
Half waffle



COLORED BASE

Art. 797
size: ø mm 22 25
Long mm 115
Half waffle



GREY BASE

Art. 801
size: ø mm 22 25
Long mm 115
Half waffle



COLORED BASE

Art. 799
size: ø mm 22 25
Long mm 118
Half waffle



BLACK BASE

Art. 801
size: ø mm 22 25
Long mm 115
Half waffle



**AVAILABLE
COLORS
Pag.14-15**



Packaging quantity:
40 x Box

Harder density against the bar to keep the grip from slipping and the soft Gel density were needed.

MX GRIPS SINGLE DENSITY

HARDNESS

MEDIUM SH 35 Total



Art. 707

size: Ø mm 22 25
Long mm 115
Full waffle



USA DESIGN

Art. 795

size: Ø mm 22 25
Long mm 115
Half waffle



Art. 792

size: Ø mm 22 25
Long mm 115
No waffle



Art. 803

size: Ø mm 22 25
Long mm 115
Half waffle



Art. 794

size: Ø mm 22 25
Long mm 115
Half waffle

AVAILABLE
COLORS
Pag.14-15



Packaging quantity:
40 x Box

Made in Italy

MX GRIPS FLUORESCENT COLORS

FLUO DESIGN

Art. 788

size: Ø mm 22 25
Long mm 115
Triple Density
No waffle



WHITE BASE FLUO DESIGN

Art. 801

size: Ø mm 22 25
Long mm 115
Double Density
Half waffle



SPECIAL EDITION FLUO DESIGN

Art. 788

size: Ø mm 22 25
Long mm 115
Triple Density
No waffle



COLORED BASE FLUO DESIGN

Art. 801

size: Ø mm 22 25
Long mm 115
Double Density
Half waffle



FLUO DESIGN

Art. 791

size: Ø mm 22 25
Long mm 115
Double Density
Half waffle



FLUO DESIGN

Art. 794

size: Ø mm 22 25
Long mm 115
Double Density
Half waffle



AVAILABLE
COLORS
Pag.14-15



Packaging quantity:
40 x Box

Made in Italy

ROAD GRIPS



Packaging quantity:
40 x Box

ROAD GRIPS RACE COMPOUND

New material for **GP racing** - ONLY OPEN END

Made in Italy

HARDNESS

HARD SH 58 Inside
SOFT SH 30 Outside



RACE

Art. 717 OE-RA

size: \varnothing mm 22 25
Long mm 122
Double Density grip
OPEN END



RACE

Art. 838 OE-RA

size: \varnothing mm 22 25
Long mm 122
Double Density grip
OPEN END



RACE

Art. 711 OE-RA

size: \varnothing mm 22 25
Long mm 118
Single Density grip
OPEN END



RACE

Art. 729 OE-RA

size: \varnothing mm 22 25
Long mm 120
Single Density grip
OPEN END

**EXTRA SLIM
short**

**EXTRA SLIM
short**



RACE

Art. 723 OE-RA

size: \varnothing mm 22 25
Long mm 125
Single Density grip
OPEN END



RACE

Art. 716 OE-RA

size: \varnothing mm 22 25
Long mm 122
Single Density grip
OPEN END



RACE

Art. 780 OE-RA

size: \varnothing mm 22 25
Long mm 125
Single Density grip
OPEN END



RACE

Art. 837 OE-RA

size: \varnothing mm 22 25
Long mm 122
Single Density grip
OPEN END

ROAD GRIPS BRAND LOGO ON DEMAND

GP GEL - ONLY OPEN END

HARDNESS
HARD SH 50 Inside
SOFT SH 35 Outside



GP GEL
Art. 717 OE gp gel
size: Ø mm 22 25
Long mm 122
OPEN END

Made in Italy

AVAILABLE
COLORS
Pag.24-25

ROAD GRIPS ANODIZED ALUMINIUM

NOT OPEN END ON DEMAND

HARDNESS
HARD SH 58 Inside
SOFT SH 35 Outside



ANODIZED ALUMINIUM
Art. 728 OE
size: Ø mm 22 25
Long mm 122
OPEN END

728 BLACK RING



728 SILVER RING



728 RED RING



728 GOLD RING



Harder density against the bar to keep the grip from slipping and the soft Gel density were needed.



ROAD GRIPS DOUBLE DENSITY

NOT OPEN END ON DEMAND

HARDNESS
HARD SH 58 Inside
SOFT SH 15 Outside



Art. 717 OE
size: Ø mm 22 25
Long mm 122
OPEN END

Art. 725 OE
size: Ø mm 22 25
Long mm 122
OPEN END



Art. 719 OE
size: Ø mm 22 25
Long mm 125
OPEN END

Art. 732 OE
size: Ø mm 22 25
Long mm 122
OPEN END



Art. 721 OE
size: Ø mm 22 25
Long mm 122
OPEN END

Art. 838 OE
size: Ø mm 22 25
Long mm 122
OPEN END



Art. 724 OE
size: Ø mm 22 25
Long mm 122
OPEN END



Harder density against the bar to keep the grip from slipping and the soft Gel density were needed.



Packaging quantity:
40 x Box

Made in Italy

AVAILABLE
COLORS
Pag.24-25

ROAD GRIPS SINGLE DENSITY

SPECIAL RUBBER - OPEN END ON DEMAND

HARDNESS

MEDIUM SH 35 Total

Art. 698

size: ø mm 22 25
Long mm 135



Art. 723

size: ø mm 22 25
Long mm 125



Art. 711

size: ø mm 22 25
Long mm 118



EXTRA SLIM short

Art. 729

size: ø mm 22 25
Long mm 120



EXTRA SLIM short

Art. 713

size: ø mm 22 25
Long mm 125



Art. 780

size: ø mm 22 25
Long mm 125



Art. 716

size: ø mm 22 25
Long mm 122



Art. 837

size: ø mm 22 25
Long mm 122



ROAD GRIPS SINGLE DENSITY

SPECIAL RUBBER - OPEN END ON DEMAND

HARDNESS

MEDIUM SH 35 Total

Art. 699

size: ø mm 22 25
Long mm 125



FOAM COVER

Art. 722

size: ø mm 22 25
Long mm 125



Available only in BLACK

FOAM

Art. 785

size: ø mm 22 25
Long mm 130



Available only in BLACK



Packaging quantity:
40 x Box

Made in Italy

AVAILABLE COLORS
Pag.14-15



ROAD GRIPS FLUORESCENT COLORS

NOT OPEN END ON DEMAND

Made in Italy

AVAILABLE
COLORS
Pag.14-15

HARDNESS

HARD SH 58 Inside
SOFT SH 15 Outside

ORANGE FLUO / BLACK

Art. 732 OE

size: Ø mm 22 25
Long mm 125
OPEN END



SCS SPEED CONTROL SYSTEM

GEL TOUCH

CROSS



2 STROKES



4 STROKES



PLUS HONDA
RING ADJUST

OFF ROAD

Art. 800 MX SCS

HARDNESS

MEDIUM SH 25 Inside



Packaging quantity:
8 x Box

ROAD



ROAD

Art. 700 ROAD SCS

HARDNESS

MEDIUM SH 25 Inside



Packaging quantity:
10 x Box

There are two fitments of the 800 SCS Offroad system: One for Two-stroke Motorcycles and one Four-strokes. Once on the bars, you'll also notice that this is the first set of grips that you've ever owned that have the exact same external diameter.

Once on the bars, you'll also notice that this is the first set of grips that you've ever owned that have the exact same external diameter.

GEL TOUCH - DOUBLE DENSITY

CARBON FIBER COMPOUND THROTTLE

TWO THROTTLE FITMENTS FOR ROAD BIKES:

ONE FOR: DUCATI - SUZUKI - YAMAHA

OTHER FOR: APRILIA - HONDA - KAWASAKI

SCOOTER GRIPS

OPEN END ON DEMAND

HARDNESS

HARD SH 58 Inside
SOFT SH 15 Outside

**AVAILABLE
COLORS**
Pag.30-31



Art. 601
size: Ø mm 22 25
Long mm 120



Art. 732
size: Ø mm 22 25
Long mm 125



Art. 733
size: Ø mm 22 25
Long mm 122



Art. 767
size: Ø mm 22 25
Long mm 115



Art. 768
size: Ø mm 22 25
Long mm 115



Art. 789
size: Ø mm 22 25
Long mm 115



Art. 744
size: Ø mm 22 25
Long mm 115
ANODIZED ALUMINIUM



Art. 728
size: Ø mm 22 25
Long mm 122
ANODIZED ALUMINIUM

ATV - JETSKI GRIPS

OPEN END ON DEMAND

HARDNESS

HARD SH 58 Inside
SOFT SH 15 Outside

**AVAILABLE
COLORS**
Pag.30-31



Art. 726
size: Ø mm 22 22
Long mm 125



Art. 804
size: Ø mm 22 22
Long mm 120



Art. 964 EVO
size: Ø mm 22 22
Long mm 120



Art. 838 SA
size: Ø mm 22 22
Long mm 125



Art. 727
size: Ø mm 22 22
Long mm 125



Art. 808
size: Ø mm 22 22
Long mm 120



Art. 999
size: Ø mm 22 22
Long mm 120

Plugs



Art. 939
size: Ø mm 22 22
Long mm 120

MAXI SCOOTER GRIPS SOFT TOUCH

HARDNESS

MEDIUM SH 35 Total

OPEN END ON DEMAND

SOFT TOUCH

Art. 761

size: ø mm 22 25
Long mm 125

AVAILABLE
COLORS
Pag.30-31



RALLY GRIPS SOFT TOUCH

HARDNESS

MEDIUM SH 35 Total

OPEN END ON DEMAND

FOAM EXTRA STRONG

Art. 786

size: ø mm 22 25
Long mm 125



Art. 737

size: ø mm 22 25
Long mm 125



AVAILABLE
COLORS
Pag.30-31

Art. 714

size: ø mm 22 25
Long mm 125



Packaging quantity:
40 x Box

Made in Italy

CUSTOM - CRUISER GRIPS

Art. 841

size: ø mm 22 25-24 28 - Long mm 140
AVAILABLE COLORS: Red/Silver/Blue Ring



Art. 862

size: ø mm 22 25-24 28 - Long mm 140



FOAM

Art. 860

size: ø mm 22 25 - Long mm 130



ALUMINIUM

Art. 864

size: ø mm 22 25-24 28 - Long mm 140



Art. 842

size: ø mm 22 25-24 28 - Long mm 128



Art. 866

size: ø mm 22 25-24 28 - Long mm 130



Art. 862 CR.SK.

size: ø mm 22 25-24 28
Long mm 140



Packaging only for 862 CR.SK.



Packaging quantity:
10 x Box

HARDNESS

HARD SH 58 Inside
SOFT SH 15 Outside

SCOOTER - ATV - JETSKI GRIPS RESUME

DOUBLE DENSITY SCOOTER



SINGLE DENSITY SCOOTER



SINGLE DENSITY SCOOTER - OPEN END



DOUBLE DENSITY SCOOTER



ALUMINIUM RING SCOOTER - OPEN END



SINGLE DENSITY SCOOTER - OPEN END



ALUMINIUM RING SCOOTER



SINGLE DENSITY MAXI SCOOTER



SINGLE DENSITY MAXI SCOOTER - OPEN END



DOUBLE DENSITY SCOOTER



DOUBLE DENSITY ATV - JETSKI



DOUBLE DENSITY SCOOTER



DOUBLE DENSITY ATV - JETSKI



ATV - JETSKI - RALLY - CUSTOM GRIPS RESUME

DOUBLE DENSITY ATV - JETSKI



SINGLE DENSITY RALLY



SINGLE DENSITY RALLY



DOUBLE DENSITY ATV - JETSKI



SINGLE DENSITY FOAM RALLY - FOAM



ALUMINIUM RING ATV - JETSKI



CRUISER GRIPS ALUMINIUM RING - CUSTOM



CRUISER GRIPS CUSTOM



SINGLE DENSITY ATV - JETSKI



CRUISER GRIPS FOAM - CUSTOM



CRUISER GRIPS CUSTOM



SINGLE DENSITY ATV - JETSKI



CRUISER GRIPS CUSTOM



CRUISER GRIPS ALUMINIUM - CUSTOM



DOUBLE DENSITY SCOOTER - FLUO



ALUMINIUM RING ATV - JETSKI



SINGLE DENSITY TRIAL



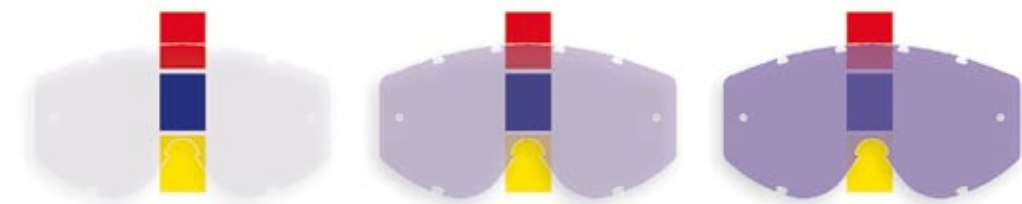
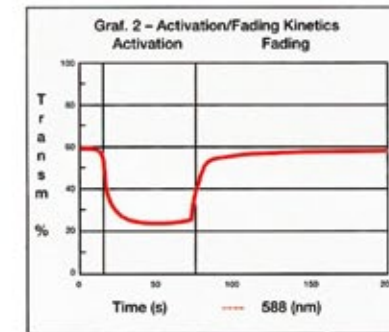
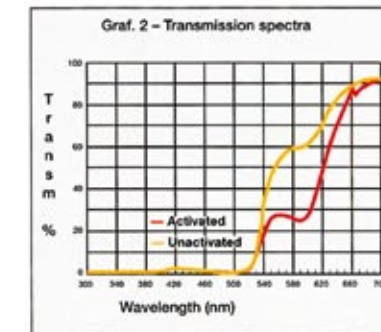
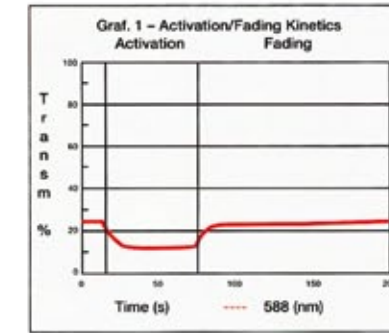
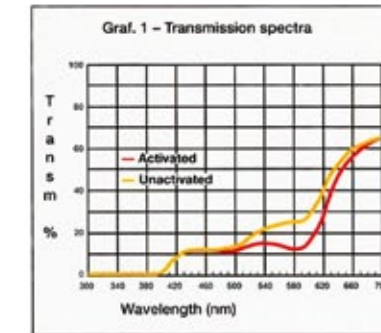
DOUBLE DENSITY TRIAL



CRUISER GRIPS CUSTOM



MX GOGGLES



Photochromatic Xelox L is a solar filter with a high speed of reaction: Activation time about 4 seconds, fading time about 4 seconds. This product is in a compliance with specifications EN 166, EN 174 and EN 1836. According to EN 1836 such filters comply to point 4.1.3.1, which fixes the category for

photochromatic filters based on luminous transmittance at faded state n_0 and luminous transmittance at darkened state n_1 . For photochromatic filters the ratio between n_0 and n_1 must be $\geq 1,25$.

MADE IN ITALY

3200 FL MX GOGGLES VENOM

MULTILAYERED - MIRRORED

Art. 3200 FL
Yellow Fluo / Black
 LENS ART. 3248 MULTILAYERED MIRRORED

Made in Italy

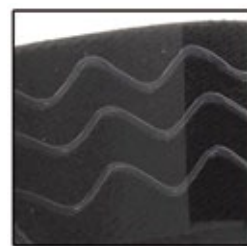
Homologation : AC - 96025 REV.2



Double density foam with hydro repellent and colored velvet

Totally new Blue, Red, Yellow, Orange, Green Mirrored lens, with a special process to avoid scratches.

- ANTI SCRATCH
- ANTI U.V.
- NO FOG
- COLORED VELVET



3 silicone treated strap



Packaging



Used by many of World Championship riders in MX, Enduro and other similar motorsports is a meaning of succes and prestige. The main features that puts the new 3200 on many podiums are: - Lenses: Anti UV – Anti scratch – No Fog (Progrip patented NO FOG lens technology rated the best NO FOG performance on the market) – Light sensitive (fastest light sensitive lens on the market – less than 5 seconds to clear to smoke and viceversa) - Built in tear off pins. - Foam: double density foam with hydro repellent and colored velvet. - Quick and easy TEAR OFFS system. - Silicone treated strap to fix the strap on helmet. - Precut foam and molded channels for eyeglasses temples. It fits in any helmet.

HOMOLOGATION - CE-EN-N° AC-96025 REV.2



Art. 3200 FL
Black / White

LENS ART. 3248 MULTILAYERED MIRRORED



Art. 3200 FL
Red / White

LENS ART. 3246 MULTILAYERED MIRRORED



Art. 3200 FL
Orange / Blue

LENS ART. 3249 MULTILAYERED MIRRORED



Art. 3200 FL
Turquoise / Red

LENS ART. 3248 MULTILAYERED MIRRORED



Art. 3200 FL
Green / White

LENS ART. 3246 MULTILAYERED MIRRORED

3200 LS MX GOGGLES VENOM LIGHT SENSITIVE

Art. 3200 LS
Orange / Black

LENS ART. 3298 LIGHT SENSITIVE

Made in Italy

Homologation : AC - 96025 REV.2



ANTI SCRATCH

ANTI U.V.

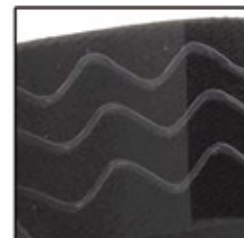
NO FOG

COLORED VELVET

LIGHT SENSITIVE

The lens position is even more inclined to increase the field of vision. Increased protection around the bridge of the nose.

Double density foam with hydro repellent and colored velvet



3 silicone treated strap



Packaging



The Progrip goggles are one of the most famous masks on the market. Used by many of World Championship riders in MX, Enduro and other similar motorsports is a meaning of success and prestige. The main features that put the 3200 on many podiums are:- Lenses: 1 mm thickness Anti UV - Anti scratch - No Fog (Progrip patented NO FOG lens technology rated the best NO FOG performance on the market) - Light sensitive (fastest light sensitive lens on the market - less than 5 seconds to clear to smoke and viceversa) - Built in tear off pins. - Quick and easy TEAR OFFS system. - Foam: double density foam with hydro repellent and colored velvet. - Silicone treated strap to fix the strap on helmet. - Precut foam and molded channels for eyeglasses temples. It fits in any helmet.

HOMOLOGATION - CE-EN-N° AC-96025 REV.2



Art. 3200 LS
Red / Black

LENS ART. 3298
LIGHT SENSITIVE



Art. 3200 LS
Blue / Black

LENS ART. 3298
LIGHT SENSITIVE



Art. 3200 LS
Grey / Black

LENS ART. 3298
LIGHT SENSITIVE



Art. 3200 LS
Green / Black

LENS ART. 3298
LIGHT SENSITIVE



Art. 3200 LS
Yellow / Black

LENS ART. 3298
LIGHT SENSITIVE

3303 FL MX GOGGLES VISTA MULTILAYERED - MIRRORED

NEW
PRODUCT

Art. 3303 FL
Turquoise / Black

LENS ART. 3348 MULTILAYERED MIRRORED

Homologation : AC - 96025 REV.2



Double density foam with hydro repellent and colored velvet

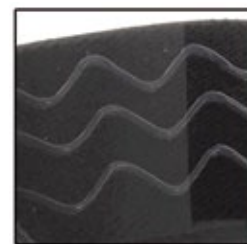
Totally new Blue, Red, Yellow, Orange, Green Mirrored lens, with a special process to avoid scratches.

ANTI SCRATCH

ANTI U.V.

NO FOG

COLORED VELVET



3 silicone treated strap



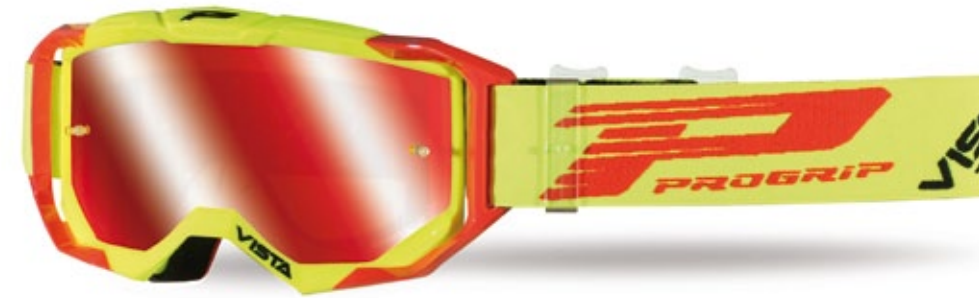
Packaging



Used by many of World Championship riders in MX, Enduro and other similar motorsports is a meaning of succes and prestige. The main features that puts the new 3303 on many podiums are: - Lenses: Anti UV – Anti scratch – No Fog (Progrip patented NO FOG lens technology rated the best NO FOG performance on the market) – Light sensitive (fastest light sensitive lens on the market – less than 5 seconds to clear to smoke and viceversa) - Built in tear off pins. - Foam: double density foam with hydro repellent and colored velvet. - Quick and easy TEAR OFFS system. - Silicone treated strap to fix the strap on helmet. - Precut foam and molded channels for eyeglasses temples. It fits in any helmet.

HOMOLOGATION - CE-EN-N° AC-96025 REV.2

+ Additional FREE art. 3310 clear no fog lens inside the box.



Art. 3303 FL
Yellow Fluo / Red

LENS ART. 3348
MULTILAYERED MIRRORED



Art. 3303 FL
Red / Blue

LENS ART. 3346
MULTILAYERED MIRRORED



Art. 3303 FL
Black / White

LENS ART. 3348
MULTILAYERED MIRRORED



Art. 3303 FL
Blue / Orange Fluo

LENS ART. 3347
MULTILAYERED MIRRORED

3303 TR MX GOGGLES VISTA TRANSPARENT

NEW
PRODUCT

Art. 3303 TR
Red
LENS ART. 3310 CLEAR

Homologation : AC - 96025 REV.2



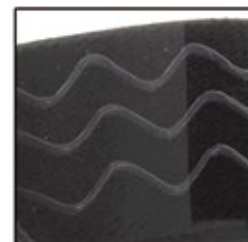
Double density foam with hydro repellent and colored velvet

ANTI SCRATCH

ANTI U.V.

NO FOG

COLORED VELVET



3 silicone treated strap



Packaging



The Progrip goggles are one of the most famous masks on the market. Used by many of World Championship riders in MX, Enduro and other similar motorsports is a meaning of succes and prestige. The main features that puts the 3303 on many podiums are:- Lenses: 1 mm thickness Anti UV – Anti scratch – No Fog (Progrip patented NO FOG lens technology rated the best NO FOG performance on the market) – Light sensitive (fastest light sensitive lens on the market – less than 5 seconds to clear to smoke and viceversa) - Built in tear off pins. - Quick and easy TEAR OFFS system. - Foam: double density foam with hydro repellent and colored velvet. - Silicone treated strap to fix the strap on helmet. - Precut foam and molded channels for eyeglasses temples. It fits in any helmet.

HOMOLOGATION - CE-EN-N° AC-96025 REV.2

+ Additional FREE art. 3310 clear no fog lens inside the box.



Art. 3303 TR
Blue

LENS ART. 3310 CLEAR



Art. 3303 TR
White

LENS ART. 3310 CLEAR



Art. 3303 TR
Black

LENS ART. 3310 CLEAR

LENSES FOR VISTA

Art. 3370
Tear offs
10 pcs per bag



Art. 3371
Tear offs
25 pcs per bag



Art. 3310
CLEAR



Art. 3346
Multilayered
Blue



Art. 3347
Multilayered
Yellow



Art. 3348
Multilayered
Red



Art. 3315
Roll Off

3450 FL MX GOGGLES RIOT

MULTILAYERED - MIRRORED

Art. 3450 FL
Yellow fluo / Black
 LENS ART. 3248 MULTILAYERED MIRRORED

Homologation : AC - 96025 REV.2



Double density foam with hydro repellent and colored velvet

Made in Italy

ANTI SCRATCH

ANTI U.V.

NO FOG

COLORED VELVET



Silicone treated strap



Packaging



Art. 3450 FL
Light blue / Black
 LENS ART. 3248
 MULTILAYERED MIRRORED



Art. 3450 FL
Fuxia / Black
 LENS ART. 3246
 MULTILAYERED MIRRORED



Art. 3450 FL
Orange / Black
 LENS ART. 3252
 MULTILAYERED MIRRORED



Art. 3450 FL
Red / Black
 LENS ART. 3251
 MULTILAYERED MIRRORED



The Progrip goggles are one of the most famous masks on the market. Used by many of World Championship riders in MX, Enduro and other similar motorsports is a meaning of succes and prestige. The main features that puts the 3450 on many podiums are: - Lenses: 1 mm thickness Anti UV – Anti scratch – No Fog (Progrip patented NO FOG lens technology rated the best NO FOG performance on the market) - Quick and easy TEAR OFFS system. - Multilayered Mirrored Lens- Foam: double density foam with hydro repellent and colored velvet. - Built in tear off pins. - Silicone treated strap to fix the strap on helmet.- Precut foam and molded channels for eyeglasses temples. It fits in any helmet.

HOMOLOGATION - CE-EN-N° AC-96025 REV.2

3450 LS MX GOGGLES RIOT LIGHT SENSITIVE

Art. 3450 LS
White / Black

LENS ART. 3298 LIGHT SENSITIVE

Homologation : AC - 96025 REV.2



Made in Italy

Double density foam with hydro repellent and colored velvet

The lens position is evenmore inclined to increasethe field of vision.Increased protection aroundthe bridge of the nose.

ANTI SCRATCH

ANTI U.V.

NO FOG

LIGHT SENSITIVE

COLORED VELVET



Silicone treated strap



Packaging



The Progrip goggles are one of the most famous masks on the market. Used by many of World Championship riders in MX,Enduro and other similar motorsports is a meaning of succes and prestige. The main features that puts the 3450 on many podiums are:- Lenses: 1 mm thickness Anti UV – Anti scratch – No Fog(Progrip patented NO FOG lens technologyrated the best NO FOG performance on the market) – Light sensitive (fastest light sensitive lens on the market – less than 5 seconds to clear to smoke and viceversa) - Built in tear off pins. - Quick and easy TEAR OFFS system. - Foam: double density foam with hydro repellent and colored velvet. - Silicone treated strap to fix the strap on helmet. - Precut foam and molded channels for eyeglasses temples. It fits in any helmet.

HOMOLOGATION - CE-EN-N° AC-96025 REV.2



Art. 3450 LS
Orange / Black

LENS ART. 3298
LIGHT SENSITIVE



Art. 3450 LS
Blue / Black

LENS ART. 3298
LIGHT SENSITIVE



Art. 3450 LS
Fuxia / Black

LENS ART. 3298
LIGHT SENSITIVE



Art. 3450 LS
Red / Black

LENS ART. 3298
LIGHT SENSITIVE



Art. 3450 LS
Yellow / Black

LENS ART. 3298
LIGHT SENSITIVE



Art. 3450 LS
Green / Black

LENS ART. 3298
LIGHT SENSITIVE

MX GOGGLES CARBON VERSIONS

LENS ART. 3298 LIGHT SENSITIVE

Art. 3200 LS
Venom
Carbon

- ANTI SCRATCH
- ANTI U.V.
- NO FOG
- LIGHT SENSITIVE



LENS ART. 3298 LIGHT SENSITIVE

Art. 3450 LS
Riot
Carbon

- ANTI SCRATCH
- ANTI U.V.
- NO FOG
- LIGHT SENSITIVE



LENS ART. 3244 POLARIZED

Art. 3450 SC
Riot
Carbon
Polarized

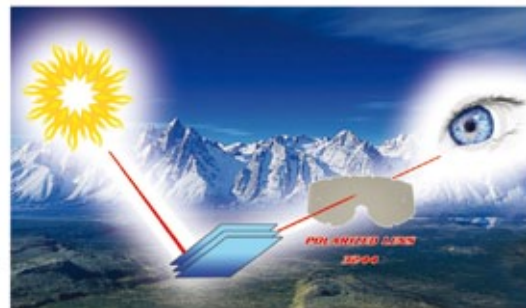
- ANTI SCRATCH
- ANTI U.V.
- NO FOG



Mounted lens
POLARIZED

Working principle:

Natural light waves circulate in all directions and is, in fact, called diffused light. When light meets a reflective surface (water, snow, sand, etc.) it is polarized, or organized in parallel planes. It is this concentration that creates the reflection and therefore the glare. The polarizing filter is oriented perpendicular to this plane in such a way that it absorbs the rays and eliminates the disturbing glare.



Maximum efficiency 99%

Suggested uses:
The tint is a neutral color without any chromatic changes. The level of transmission makes the lens appropriate for use while driving.

Under certain conditions, the glare that is created by reflective surfaces (water, snow, sand, etc.) is such that eyesight is greatly limited and eye fatigue is increased.



MAX ANSTIE
2017 MXON INDIVIDUAL WINNER

3404 FL MX GOGGLES MENACE MULTILAYERED - MIRRORED

Art. 3404
Turquoise
LENS ART. 3246 MULTILAYERED MIRRORED



Homologation : AC - 96025 REV.2

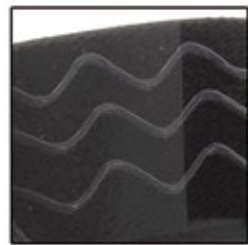
Double density foam with hydro repellent and colored velvet

ANTI SCRATCH

ANTI U.V.

NO FOG

COLORED VELVET



3 silicone treated strap



Packaging



The ProGrip goggles are one of the most famous masks on the market. Used by many of World Championship riders in MX, Enduro and other similar motorsports is a meaning of succes and prestige. The main features that puts the 3404 on many podiums are: - Lenses: Anti UV – Anti scratch – No Fog (ProGrip patented NO FOG lens technology rated the best NO FOG performance on the market) - Built in tear off pins. - Foam: double density foam with hydro repellent and colored velvet. - Quick and easy TEAR OFFS system. - Silicone treated strap to fix the strap on helmet. - Precut foam and molded channels for eyeglasses temples.

HOMOLOGATION - AC-96025-REV.2

+ Additional FREE art. 3210 clear no fog lens inside the box.



Art. 3404
Blue
LENS ART. 3247
MULTILAYERED MIRRORED



Art. 3404
Red
LENS ART. 3246
MULTILAYERED MIRRORED



Art. 3404
Black
LENS ART. 3248
MULTILAYERED MIRRORED



Art. 3404
Yellow Fluo
LENS ART. 3247
MULTILAYERED MIRRORED



Art. 3404
White
LENS ART. 3252
MULTILAYERED MIRRORED

3400 MX GOGGLES MENACE TRANSPARENT

Art. 3400
Yellow
LENS ART. 3210 CLEAR

Homologation : AC - 96025 REV.2



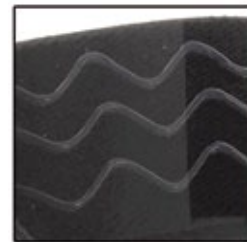
Double density foam with hydro repellent and colored velvet



Packaging



- ANTI SCRATCH
- ANTI U.V.
- NO FOG
- COLORED VELVET



3 silicone treated strap



WEARABLE ALSO WITH EYEGLASSES

The ProGrip goggles are one of the most famous masks on the market. Used by many of World Championship riders in MX, Enduro and other similar motorsports is a meaning of succes and prestige. The main features that puts the 3400 on many podiums are: - Lenses: Anti UV – Anti scratch – No Fog (ProGrip patented NO FOG lens technology rated the best NO FOG performance on the market) - Built in tear off pins. - Foam: double density foam with hydro repellent and colored velvet. - Quick and easy TEAR OFFS system. - Silicone treated strap to fix the strap on helmet. - Precut foam and molded channels for eyeglasses temples.

HOMOLOGATION - AC-96025-REV.2



Art. 3400
Red
LENS ART. 3210 CLEAR



Art. 3400
Orange
LENS ART. 3210 CLEAR



Art. 3400
White
LENS ART. 3210 CLEAR



Art. 3400
Green
LENS ART. 3210 CLEAR



Art. 3400
Black
LENS ART. 3210 CLEAR



Art. 3400
Blue
LENS ART. 3210 CLEAR

3201 FL MX GOGGLES ATZAKI MULTILAYERED - MIRRORED

NEW
PRODUCT

Art. 3201 FL
Red Fluo

LENS ART. 3247 MULTILAYERED MIRRORED



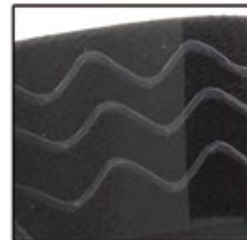
Homologation : AC - 10170

ANTI SCRATCH

ANTI U.V.

COLORED VELVET

Single density foam with hydro repellent and colored velvet



3 silicone treated strap



Packaging



WEARABLE ALSO
WITH EYEGLASSES



Art. 3201 FL
Blue

LENS ART. 3247
MULTILAYERED MIRRORED



Art. 3201 FL
White

LENS ART. 3246
MULTILAYERED MIRRORED



Art. 3201 FL
Orange Fluo

LENS ART. 3246
MULTILAYERED MIRRORED



Art. 3201 FL
Yellow Fluo

LENS ART. 3248
MULTILAYERED MIRRORED



Art. 3201 FL
Black

LENS ART. 3252
MULTILAYERED MIRRORED

3201 MX GOGGLES ATZAKI TRANSPARENT

Art. 3201
Red
LENS ART. 3213 CLEAR



Homologation : AC - 10170

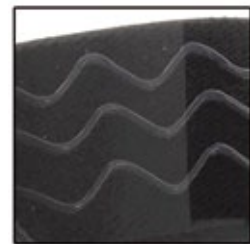


Single density foam with hydro repellent and colored velvet

- ANTI SCRATCH
- ANTI U.V.
- COLORED VELVET



Packaging



3 silicone treated strap



Art. 3201
Blue
LENS ART. 3213 CLEAR



Art. 3201
Black
LENS ART. 3213 CLEAR



Art. 3201
Yellow
LENS ART. 3213 CLEAR



Art. 3201
Green
LENS ART. 3213 CLEAR



Art. 3201
Orange
LENS ART. 3213 CLEAR



Art. 3201
White
LENS ART. 3213 CLEAR



Art. 3201
Silver
LENS ART. 3213 CLEAR

3204 MX GOGGLES DARK SIDE MULTILAYERED - MIRRORED

Art. 3204
Mirrored Blue

LENS ART. 3246 MULTILAYERED MIRRORED

MATT FRAME

Homologation : AC - 14063

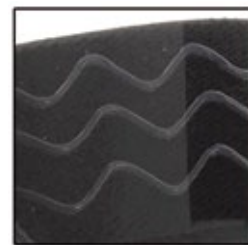


Double density foam with hydro repellent and colored velvet

ANTI SCRATCH

ANTI U.V.

NO FOG



3 silicone treated strap



Packaging



Art. 3204
Mirrored Green

LENS ART. 3251
MULTILAYERED MIRRORED



Art. 3204
Mirrored Yellow

LENS ART. 3247
MULTILAYERED MIRRORED



Art. 3204
Mirrored Red

LENS ART. 3248
MULTILAYERED MIRRORED



Art. 3204
Mirrored Orange

LENS ART. 3249
MULTILAYERED MIRRORED



Art. 3204
Mirrored Silver

LENS ART. 3252
MULTILAYERED MIRRORED



3204 FL MX GOGGLES SHINY SIDE MULTILAYERED - MIRRORED

Art. 3204 FL
Orange Fluo
LENS ART. 3246 MULTILAYERED MIRRORED



Homologation : AC - 14063

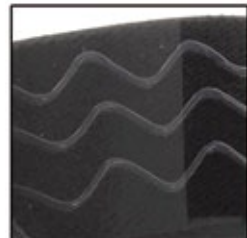
Single density foam with hydro repellent and colored velvet

ANTI SCRATCH

ANTI U.V.

NO FOG

COLORED VELVET



3 silicone treated strap



Packaging



WEARABLE ALSO
WITH EYEGLASSES



Art. 3204 FL
Green Fluo
LENS ART. 3251
MULTILAYERED MIRRORED



Art. 3204 FL
Yellow Fluo
LENS ART. 3248
MULTILAYERED MIRRORED



Art. 3204 FL
Red Fluo
LENS ART. 3247
MULTILAYERED MIRRORED

3301 MX GOGGLES NASWA TRANSPARENT

Art. 3301
Black
LENS ART. 3210 CLEAR

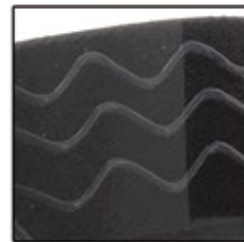


Homologation : AC - 10170



Single density foam with hydro repellent velvet

- ANTI SCRATCH
- ANTI U.V.
- NO FOG



3 silicone treated strap



Packaging



Art. 3301
White
LENS ART. 3210 CLEAR



MAX NAGL
ICE ONE Racing HUSQVARNA - MXgp 2017

3101 MX GOGGLES ATZAKI TRANSPARENT

GOGGLES
FOR
KIDS

Art. 3101
Red
LENS ART. 3111 CLEAR



NO FOG

Made in Italy



This is the 3101 PROGRIP kids goggle: the new ergonomically design follow the little guys face form with maximum comfortability. With single density foam, one silicone treated strap, anti UV and 1mm. double side NO-FOG lens.



Art. 3101
White
LENS ART. 3111 CLEAR



Art. 3101
Orange
LENS ART. 3111 CLEAR



Art. 3101
Blue
LENS ART. 3111 CLEAR



Art. 3101
Yellow
LENS ART. 3111 CLEAR



Art. 3101
Green
LENS ART. 3111 CLEAR



Art. 3101
Black
LENS ART. 3111 CLEAR

3101 FL MX GOGGLES ATZAKI DUAL LAYER MIRRORED LENS

NEW
PRODUCT

Art. 3101 FL
Yellow Fluo

LENS ART. 3148 DUAL LAYER MIRRORED

GOGGLES
FOR
KIDS



Packaging

NO FOG

Made in Italy



Art. 3101 FL
Orange Fluo

LENS ART. 3146
DUAL LAYER MIRRORED



Art. 3101 FL
Blue

LENS ART. 3147
DUAL LAYER MIRRORED

REPLACEMENT YOUTH LENSES

FITS YOUTH GOGGLE SERIES N° 3101



Art. 3146
Dual layer - Mirrored Blue



Art. 3147
Dual layer - Mirrored Yellow



Art. 3148
Dual layer - Mirrored Red



Art. 3199
Light Sensitive



Art. 3111
Clear



Art. 3121
Dark



Art. 3171
Tear Offs

MX GOGGLES ROLL OFF EXTRA LARGE

Mounted with anti stick lens,
ART. 3215



Art. 3218
Goggle 3200 +
Roll off 3268

LENS ART. 3215 ANTI-STICK



Art. 3408
Goggle 3400 +
Roll off 3268

LENS ART. 3215 ANTI-STICK



Art. 3308
Goggle 3301 +
Roll off 3268

LENS ART. 3215 ANTI-STICK

New XL roll-off system with 4 cm = 1.6 inches film high. Possibility to mount roll-off and tear-off at the same time. - Quick and easy TEAR OFFS system. Ranked number one frame and 1 millimeter thickness lens system in the Industry. ProGrip patent no-fog lenses combined with Anti-stick lenses. Sizes: It fits all ProGrip goggles



Art. 3458
Goggle 3450 +
Roll off 3268

LENS ART. 3215 ANTI-STICK



Art. 3208
Goggle 3201 +
Roll off 3268

LENS ART. 3215 ANTI-STICK



Art. 3318
Goggle 3303 +
Roll off 3268

LENS ART. 3215 ANTI-STICK

ROLL OFF SYSTEM

Art. 3268 XL ROLL OFF SYSTEM
MOUNTED WITH ANTI STICK LENS, ART. 3215

30% MORE DOWNWARD VISUAL FIELD
A 30% gain in visibility give
a great competitive advantage!

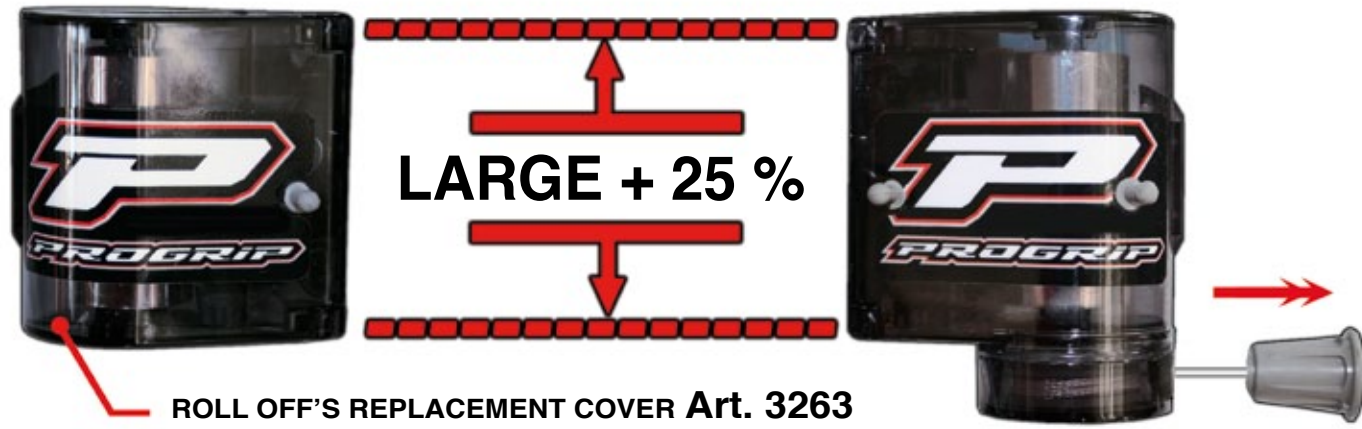
FILM LONG 6,5 METERS

+ 30 %



Art. 3268 XL ROLL OFF SYSTEM

Homologation : 1938/2010
CE-EN AC 14063



Art. 3264
Bag of 4 pieces
sweat absorber



Art. 3267
Bag of 3 pieces
Mud flap



Art. 3269
Blister of 12 pieces
replacement films



Art. 3268
Packaging Roll Off



Art. 3263
Roll Off
Replacement
cover

VISOR SHIELD

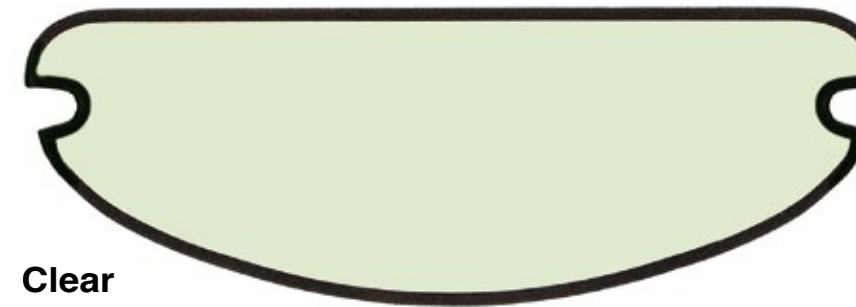
Art. 3000 LENS

FOR ARAI HELMETS



Clear

FOR ANY HELMETS



Clear



Homologation :
CE-EN AC 10170

NO FOG

LIGHT SENSITIVE



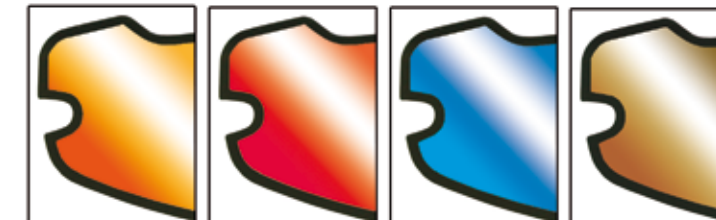
ART.3000 INTEGRAL LIGHT SENSITIVE LENS

Road 3000
lens for any
helmets



Rainbow mirrored Red mirrored Blue mirrored Bronze mirrored

Road 3000
lens for Arai
helmets



REPLACEMENT LENSES

FITS ADULT GOGGLE SERIES N° 3200 - 3201 - 3204 - 3301 - 3400 - 3404 - 3450
 NOT FOR 3303 VISTA

Art. 3270 STANDARD
 Tear offs 10 pcs per bag



Art. 3271 STANDARD
 Tear offs 25 pcs per bag



Art. 3276 LAMINATED
 Tear offs 7 pcs per bag
 MUD FLAP 3275 INCLUDED



Art. 3210 CLEAR
 One side ANTI-FOG



Art. 3211 LIGHT BLUE
 One side ANTI-FOG

Art. 3212 CLEAR
 Double side ANTI-FOG



Art. 3213 CLEAR
 Double side ANTI-SCRATCH

Art. 3215 ROLL OFF'S
 Special ANTI-STICK ANTI-FOG



Art. 3220 SMOKED
 ANTI-FOG

Art. 3221 YELLOW
 ANTI-FOG



Art. 3222 ORANGE
 ANTI-FOG

Art. 3235 LS DOUBLE LS
 LIGHT SENSITIVE ANTI-FOG



Art. 3244 POLARIZED
 ANTI-FOG

Art. 3255 DOUBLE RED
 LIGHT SENSITIVE ANTI-FOG



Art. 3256 DOUBLE YELLOW
 ANTI-FOG

MULTILAYERED LENS

Art. 3257 DOUBLE ORANGE
 ANTI-FOG



Art. 3246 MULTILAYERED BLUE
 ANTI-FOG

Art. 3265 DOUBLE
 For Roll Off's ANTI-FOG



Art. 3247 MULTILAYERED YELLOW
 ANTI-FOG

Art. 3295 SPHERIC
 Mirrored ANTI-FOG



Art. 3248 MULTILAYERED RED
 ANTI-FOG

Art. 3297 RAINBOW
 ANTI-FOG



Art. 3249 MULTILAYERED ORANGE
 ANTI-FOG

Art. 3298 DUO LAYERED LS
 LIGHT SENSITIVE ANTI-FOG



Art. 3251 MULTILAYERED GREEN
 ANTI-FOG

Art. 3250 HALF FACE MASK



Art. 3252 MULTILAYERED SILVER
 ANTI-FOG

Art. 3275 MUD FLAP
 For Tear Off's



NEW PRODUCT



Art. 3253 MULTILAYERED LIGHT BLUE
 ANTI-FOG

LENSES

Made in Italy

HELMETS

Completely new sporty design helmet with the new technology with the mixing of three different materials (Carbon, Aramid and Fiberglass) for maximum resistance and lightness. Aerodynamic shell with strategic air intake and venting extractions under the visor, in eye port, on the back of the head and even in the neck area. Aggressive extra large visor that protect form mud and sun. Anatomic luxury internal lining completely detachable and washable. Perfect fit also with big size goggles. Special designed area for perfect hold for goggle strips. Double D ring system ensures stability, safety and resistance. Weight: 1195 grams. Adjustable 3 point peak Integrated airflow through mouth and bar ventilation Brow and crown ventilation with rear exhaust for improved airflow. Protected by aegis



3090 HELMET KOMBAT

TRIPLE COMPOSITE

Homologation :
E13.22R00.22R05.10103.01



WEIGHT
1195 Gr.

Art. 3090
Black/Turquoise

SIZES FROM
XS to XXL

TRIPLE COMPOSITE SHELL
FIBREGLASS
ARAMID
CARBON



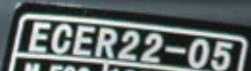
Art. 3093
Screws



Art. 3092
Peak



Art. 3094
Inside lining and pad



3090 HELMET KOMBAT

TRIPLE COMPOSITE

NEW PRODUCT



Homologation :
E13.22R00.22R05.10103.01

WEIGHT
1195 Gr.

Art. 3090
Black/White

SIZES FROM
XS to XXL

TRIPLE COMPOSITE SHELL
FIBREGLASS
ARAMID
CARBON



Art. 3090
Black/Yellow Fluo

TRIPLE COMPOSITE SHELL
FIBREGLASS
ARAMID
CARBON

3090 HELMET KOMBAT RACE



Art. 3090
Kombat Race



Art. 3093
Screws



Art. 3092
Peack



Art. 3094
Inside lining and pad



3091 HELMET

TRIPLE COMPOSITE

Homologation :
E13.22R00.22R05.10103.01

WEIGHT
1195 Gr.

Art. 3091
TOTAL WHITE

SIZES FROM
XS to XXL

TRIPLE COMPOSITE SHELL
FIBREGLASS
ARAMID
CARBON



Art. 3093
Screws



Art. 3092
Peack



Art. 3094
Inside lining and pad

3191 HELMET PX-3 NOVA

SPECIAL DURABLE ABS - HIGH IMPACT SHELL

Homologation : E1.05300443

WEIGHT
1350 Gr.

Art. 3191
Turquoise/Yellow Fluo

SIZES FROM
XS to XXL

SPECIAL DURABLE ABS
- DD RETENTION STRAP
- PROTECTED BY AEGIS
- HOMOLOGATION
CERTIFICATED EC
- ACU APPROVED



Art. 3196
Screws



Art. 3195
Peack



Art. 3197
Inside lining and pad

3191 HELMET PX-3 SOLID

SPECIAL DURABLE ABS - HIGH IMPACT SHELL

Homologation : E1.05300443

WEIGHT
1350 Gr.

Art. 3191
Black Matt

SIZES FROM
XS to XXL



Art. 3191
Yellow Fluo

- SPECIAL DURABLE ABS
- DD RETENTION STRAP
- PROTECTED BY AEGIS
- HOMOLOGATION CERTIFICATED EC
- ACU APPROVED



Art. 3191
White



Art. 3196
Screws



Art. 3195 Peack



Art. 3197
Inside lining and pad



3191 HELMET PX-3 ARTSY

SPECIAL DURABLE ABS - HIGH IMPACT SHELL

Homologation : E1.05300443

WEIGHT
1350 Gr.

Art. 3191
Red/Blue

SIZES FROM
XS to XXL



Art. 3191
Fuxia/Black

- SPECIAL DURABLE ABS**
- DD RETENTION STRAP
 - PROTECTED BY AEGIS
 - HOMOLOGATION CERTIFICATED EC
 - ACU APPROVED



Art. 3191
Green/Black



Art. 3196
Screws



Art. 3195
Peack



Art. 3197
Inside lining and pad



3095 HELMET PX-1

SPECIAL DURABLE ABS - HIGH IMPACT SHELL

Homologation : E1.05300443

WEIGHT
1350 Gr.

Art. 3095
Aqua/Black

SIZES FROM
XS to XXL



Art. 3095
Black

- SPECIAL DURABLE ABS**
- DD RETENTION STRAP
 - PROTECTED BY AEGIS
 - HOMOLOGATION CERTIFICATED EC
 - ACU APPROVED



Art. 3095
Yellow Fluo



Art. 3098
Screws



Art. 3096
Peack



Art. 3097
Inside lining and pad



3009 HELMET PX-2 ARTSY KID

SPECIAL DURABLE ABS - HIGH IMPACT SHELL

Homologation : E1.05300443

NEW PRODUCT



WEIGHT
1200 Gr.

Art. 3009
Blue/Orange

YOUTH SIZE
S - M - L



Art. 3009
Yellow Fluo/Black

- SPECIAL DURABLE ABS
- DD RETENTION STRAP
- PROTECTED BY AEGIS
- HOMOLOGATION CERTIFICATED EC
- ACU APPROVED



Art. 3009
Orange/Black

HELMETS
FOR
KIDS



Art. 3012
Screws



Art. 3010
Peack



Art. 3011
Inside lining and pad



3185 HELMET 3 VARIANT

SPECIAL DURABLE ABS - HIGH IMPACT SHELL

NEW
PRODUCT



Homologation : ECE 22.05

WEIGHT
1500 Gr.

Art. 3185
Black

SIZES FROM
XS to XXL

3185 HELMET 3 VARIANT

SPECIAL DURABLE ABS - HIGH IMPACT SHELL

High resistance thermoplastic resin external shell.
Integrated sun visor.
2 Shell size.
Emergency cheek pad removal system.
Double D retention system.
ECE 22.05 Safety standards.
Weight 1500g.



Art. 3185
ROAD USE



Art. 3185
CROSS / ENDURO
USE



Art. 3185
SCOOTER USE



3190 Screws



3187 Clear Visor

3188 Dark Visor



Art. 3185
Peack



Art. 3189
Inside lining and pad



RACE GEAR



ALEX PUZAR
A special thanks to our tester and friend.

6010 PROFESSIONAL RACE GEAR

Made in Italy

ADULT PANTS

SIZES FROM 26 to 38



Art. 6010 Red / Black

Art. 6010 White / Black

Art. 6010 Grey / Black



Cross/enduro pant for adult made in printed polyester and Cordura fabric for long durability. Elastic strap on the sides for a better fitting. Elastic in strategic positions for a perfect comfort. Patented removable leather pads. 100% Made in Italy

6010 PROFESSIONAL RACE GEAR

Made in Italy

ADULT PANTS

SIZES FROM 26 to 38

Art. 6010 Black / Yellow Fluo

Art. 6010 Blue / Light Blue



REPLACEMENT LEATHER PAD



PATENTED



LEATHER UPSIDE

VELCRO BACKSIDE



Art. 6013 Replacement leather pad

YOU NO LONGER HAVE TO THROW AWAY YOUR MX PANTS, WHEN THE KNEE PROTECTION IS BROKEN. WHEN YOU BUY PROGRIP MX PANTS, THE KNEE PROTECTION CAN BE REPLACED, SAVING YOU MONEY.

7010 PROFESSIONAL RACE GEAR

Made in Italy

ADULT JERSEY

SIZES FROM
S to XXXL



Art. 7010
Red / Black



Art. 7010
Grey
Black /



Art. 7010
Black
Yellow Fluo /



Art. 7010
White / Black



Art. 7010
Blue
Light Blue /

PRINTED ELASTIC WRIST BAND

V - COLLAR

MX and enduro jersey for adult made with high quality printed polyester with microholes for a perfect transpiration and comfort of riding. V-collar and printed elastic wrist bands are perfect to complete this great jersey.



SCUOLA MOTOCROSS 2017
IN MOTO COL GIGI - GIORDANO MANZONI



6009 PROFESSIONAL RACE GEAR



Made in Italy

PANTS FOR KIDS

SIZES FROM 24 to 36

Art. 6009
Orange / Black



Art. 6009
Blue / Light Blue



Art. 6009
Black / Yellow Fluo



Art. 6009
White / Black



Cross/enduro pant for adult made in printed polyester and Cordura fabric for long durability. Elastic strap on the sides for a better fitting. Elastic in strategic positions for a perfect comfort. Patented removable leather pads. 100% Made in Italy

7009 PROFESSIONAL RACE GEAR



Made in Italy

JERSEY FOR KIDS

SIZES FROM S to XL

Art. 7009
Orange / Black



Art. 7009
Blue / Light Blue



Art. 7009
Black / Yellow Fluo



Art. 7009
White / Black



PRINTED ELASTIC WRIST BAND

V - COLLAR

MX and enduro jersey for adult made with high quality printed polyester with microholes for a perfect transpiration and comfort of riding. V-collar and printed elastic wrist bands are perfect to complete this great jersey.

9011 ENDURO JACKET

LIGHT ENDURO JACKET



Art. 9011
BLACK / RED



Art. 9011
BLACK / BLUE

SIZES FROM
S to XXL

SIZES FROM
S to XXL



Art. 9011
BLACK / WHITE



Light Enduro jacket with all the technical racing characteristics to provide high mobility. 100% high quality polyester offering the best comfort and abrasion resistance. Detachable sleeves and large rear pocket on the back. Totally padded collar along the edge. Multiple pockets: 4 outside with water-stop system, 1 transparent on the arm, and 1 inside. Reflective lines on front and back to be seen also in the night.



DETACHABLE SLEEVES



THERMAWELD LOGO AND SOFT SAFETY NECK



BIG POCKET FOR SLEEVES

GLOVES



4010 OFF ROAD GLOVES - AIRTECH

EXTRA COMFORT

EXTRA GRIPPING



Art. 4010
RED / BLACK

NEW
PRODUCT



Palm

SIZES FROM
S to XXL



Art. 4010
YELLOW FLUO /
BLACK



Art. 4010
ORANGE /
BLACK



Art. 4010
BLUE /
BLACK



Art. 4010
GREY /
BLACK

Developed by pro racers for the most tough Off-Road conditions, the new PROGRIP 4010 Glove has additional padding in the palm and on the outside of the thumb, in the areas where you need that "something extra" to guarantee comfort during prolonged and extreme use. All areas of high use are reinforced with evident protective stitching and panels while, for a better fit, the back of the glove and the back of the fingers have cushioned Lycra inserts where the soft rubberPROGRIP logo is attached.

4014 OFF ROAD GLOVES - EXTRA LIGHT



Art. 4014
WHITE / BLACK



Palm

SIZES FROM
S to XXL



Art. 4014
YELLOW FLUO /
BLACK
SIZES:
S to XXL



Art. 4014
GREY / BLACK
SIZES:
S to XXL

The great fit and protected feeling of this new glove are defined by the padded elastic panel in the upper side. The extra light thickness of the palm area, allows a great control of the handlebar.

EXTRA COMFORT

PALM ULTRA LIGHT

4005 OFF ROAD GLOVES - NEOPRENE



Art. 4005
YELLOW FLUO

NEW
PRODUCT



Palm

SIZES FROM
S to XXL



Art. 4005
BLACK
SIZES:
S to XXL

Neoprene glove for winter time. High quality Superflex material. Additional padding in the palm and on the outside of the thumb.

EXTRA COMFORT

WATER PROOF

EDOARDO MARTINELLI
WILLY TEAM
CAMPIONE NAZIONALE AREA
NORD
CAMPIONE REGIONALE
CAT. DEBUTTANTI
LOMBARDIA



MX WILLY SCHOOL 2017

GLOVES
FOR
KIDS

4009 YOUTH OFF ROAD GLOVES - AIRTECH



Art. 4009
YELLOW FLUO /
BLACK

SIZES FROM
XXS to S

Art. 4009
ORANGE /
BLACK

SIZES FROM
XXS to S

Art. 4009
BLUE /
BLACK

SIZES FROM
XXS to S

Art. 4009
GREY /
BLACK

Developed by pro racers for the most tough Off-Road conditions, the new PROGRIP 4009 Glove has additional padding in the palm and on the outside of the thumb, in the areas where you need that "something extra" to guarantee comfort during prolonged and extreme use. All areas of high use are reinforced with evident protective stitching and panels while, for a better fit, the back of the glove and the back of the fingers have cushioned Lycra inserts where the soft rubber PROGRIP logo is attached.

4004 YOUTH OFF ROAD GLOVES - NEOPRENE

WATER PROOF



Art. 4004
YELLOW FLUO

NEW
PRODUCT



Art. 4004
BLACK

SIZES FROM
XXS to S

GLOVES
FOR
KIDS

Neoprene glove for winter time. High quality Superflex material. Additional padding in the palm and on the outside of the thumb.

SUMMER SCOOTER GLOVES



Art. 4011
BLACK / GREY

SIZES FROM
S to XXL

Tough pigskin back side vented for maximum comfort Padded syntetic leather palm reinforced.

PERFECT FIT



ROAD RACING - LONG GLOVES



PERFECT FIT

Art. 4016
BLACK / WHITE

SIZES FROM
S to XL

Hard shell carbon fiber, keprotec Genuine,drum dyed cowhide leater shell withsoft bemberg lining Reinforcedpalm, Padded knucklesAdju-stable cuff with velcro strap.



SUPER MOTARD GLOVES



Art. 4012
TITANIUM

SIZES FROM
S to XXL

The CARBON KEPROTEC insertsadd to this a-typical look but underline the highPROTECTION quality of these newly designed gloves.These semi-rigid inserts are placed on the knuckles and the joints to provide that extra protections for the areas of the hand that are most at risk.

TOTAL PROTECTION

CARBON KEPROTECT



MOTARD SHORT GLOVES



PERFECT FIT

Art. 4018
BLACK / WHITE

SIZES FROM
S to XL

Hard shell carbon fiber, keprotec Genuine,drum dyed cowhide leater shell withsoft bemberg lining Reinforcedpalm, Padded knucklesAdju-stable cuff with velcro strap.



MECHANIC GLOVES



Art. 4013
BLACK

SIZES FROM
S to XXL

EXTRA GRIPPING RUBBER PAD

55 % SYNTETHIC

43 % NYLON STRECH

43 % NYLON BAND



WINTER - WATER PROOF GLOVES

Extra thick lining inside

Art. 4017
BLACK / GREY

SIZES FROM
S to XL

55 % SYNTETHIC

4 % POLYESTER

2 % PVC



PROTECTION



5991 ADULT KNEE GUARD

HARD POLYPROPYLENE WITH ERGONOMIC FOAM



Art. 5991

Available only in BLACK
ONE SIZE FITS ALL



Knee guard made of special hard polypropylene compound with ergonomic foam protection inside. Great wearability for great variety of movements.

5996 ADULT ELBOW GUARD

HARD POLYPROPYLENE WITH ERGONOMIC FOAM



Art. 5996

Available only in BLACK
ONE SIZE FITS ALL



Elbow guard made of special hard polypropylene compound with ergonomic foam protection inside. Great wearability for great variety of movements.

5996 YOUTH KNEE PROTECTION

HARD POLYPROPYLENE WITH ERGONOMIC FOAM

FOR KIDS



Art. 5996

Available only in BLACK
ONE SIZE FITS ALL



Knee guard made of special hard polypropylene compound with ergonomic foam protection inside. Great wearability for great variety of movements.

5501 SPINE PROTECTOR 5500

END OF SERIES



HARD POLYPROPYLENE

Art. 5501

SIZES:
S - M/L - XL/XXL



Level 2 - Category 2

FOAMED

Art. 5500

SIZES:
S/M - L/XXL



5980 NET PROTECTOR

Art. 5980

SIZES:
S/M - L/XL



END OF SERIES



Level 2 - Category 2

5806 YOUTH KIDNEY BELT

HARD POLYPROPYLENE



FOR KIDS

Art. 5806

Available only in BLACK
ONE SIZE FITS ALL



BACK SIDE

5801 KIDNEY BELT



END OF SERIES

HARD POLYPROPYLENE

Art. 5801

SIZES:
ADULT SIZE



5951 ADULT NECK BRACE



Art. 5991
ADULT SIZE

END OF SERIES



BACKSIDE

9014 DUO SPORT JACKET



Art. 9014
TITANIUM / BLACK

SIZES FROM
S to XXL

END OF SERIES



3057 SCOOTER HELMET

END OF SERIES



SIZES FROM
XS to XL

Art. 3057
VINTAGE

WEIGHT
940 Gr.

Homologation : E13.22R00.22R05.9319.00



5956 YOUTH CHEST PROTECTION

END OF SERIES



FOR
KIDS

POLYCARBONATE
Art. 5956
HOMOLOGATION:
CE-EN N° 14021



Adjustable straps to allow a custom fit. Durable buckles and side straps weight: 1419 gr/ref. 8000300001

5506 YOUTH SPINE PROTECTOR

HARD POLYPROPYLENE

Art. 5506

Available only in BLACK
SIZES FROM
S to XL

END OF SERIES



FOR
KIDS



Level 2 - Category 2

5905 YOUTH INFLATABLE CHEST PROTECTOR

END OF SERIES



SIZES FROM
XS to XL

Art. 5905

WEIGHT
940 Gr.

Homologation : E13.22R00.22R05.9319.00



Art. 5905
Available only in BLACK
ONE SIZE FITS ALL

END OF SERIES



FOR
KIDS

Made in Italy



CROSS HANDGUARD

UNIVERSAL FITTING

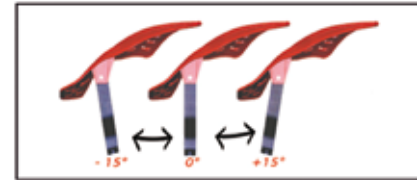


Art. 5600

AVAILABLE COLORS



MULTIPOSITION SYSTEM



BACK SIDE

PLASTIC MOUNTING KIT INCLUDED
UNIVERSAL FITTING
EXTRA STRONG AND FLEXIBLE POLYPROPYLENE
INNOVATIVE MULTIPOSITION

Art. 5630

AVAILABLE COLORS

BACK SIDE

SUPPORT Art. 5630

ENDURO - MOTARD HANDGUARD

UNIVERSAL FITTING



Art. 5610

AVAILABLE COLORS

BACK SIDE

ALUMINIUM MOUNTING KIT INCLUDED

UNIVERSAL FITTING 22 - 28 mm

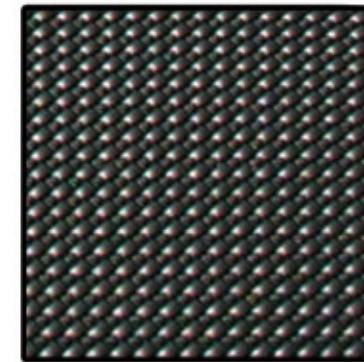
EXTRA STRONG AND FLEXIBLE POLYPROPYLENE



ACCESSORIES

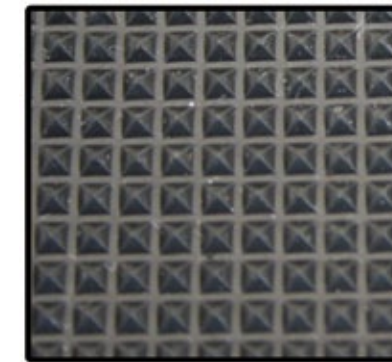


SEAT COVER FOR OFF ROAD SEATS



STANDARD

TEXTURE SURFACE



SUPER GRIP

DIAMOND SURFACE

Art. 5011

UNIVERSAL SIZE



FRONT FORK PROTECTION

REAL CARBON FIBRE

Art. 5012

LONG: 230 mm



SIDE GRIPPING ADHESIVE PAD

CUT THE AREAS YOU NEED FOR YOUR BEST PERSONAL GRIPPING

3 PIECES 210X160 MM IN THIS BAG

Art. 5020
3 pieces
SIZE:
210 mm X 160 mm

Packaging

DISK BRAKE AND SPROCKET PROTECTION

Art. 5040
SIZE:
FRONT 270 mm
REAR 240 mm

REAR FRONT

ANTI BLISTER FLANGE

Art. 5002
LYCRA + FOAM

EXAMPLE OF MOUNTING

Packaging

SILENCER PLUGS

Art. 2560
4 STROKES

Art. 2550
2 STROKES

KIT:
6 X 2560
5 X 2550
1 X 2550 FREE

FORK BOOTS

Art. 2500
Ø 34 / 37 - 40 / 45
AVAILABLE COLORS
■ ■ ■ ■ ■ ■ ■ ■

Art. 2510
Ø 42 / 45 - 60 / 65
AVAILABLE COLORS
■ ■ ■ ■ ■ ■ ■ ■

GRIPS PROTECTOR



Art. 5003
Available only in BLACK



Packaging

RESINED TANK PROTECTOR



BRAKE LEVER GRIPS



Packaging

Art. 480
Ø 10 mm - Long 75
AVAILABLE COLORS



RESINED DUO TANK PROTECTOR



Art. 5007

GAS CAP COVER



Packaging



Art. 5030
Available for:
YAMAHA - KAWASAKI
SUZUKI - HONDA - DUCATI

5030 TR Transparent
5030 CA Carbon resined
5030 CR Chromed resined



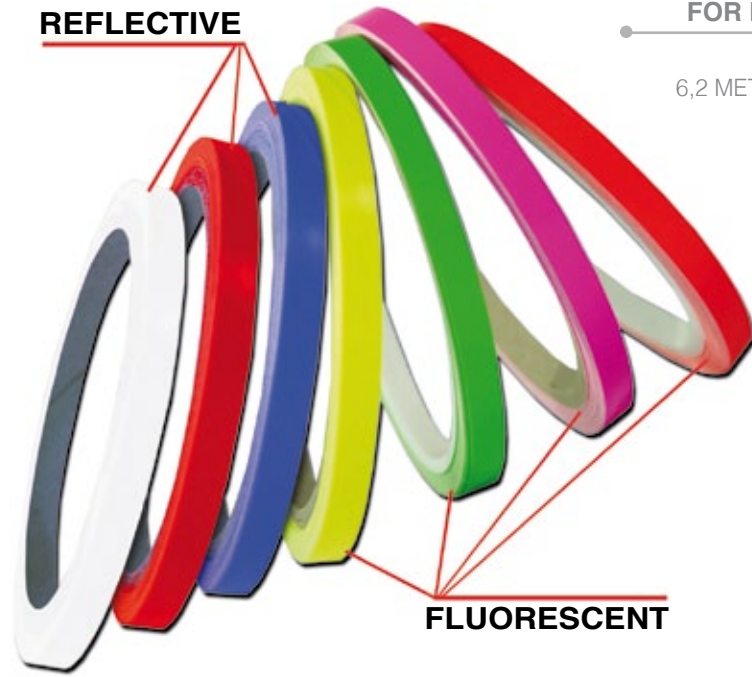
ADHESIVE STRIP



Example of mounting



REFLECTIVE



FLUORESCENT

FOR ROAD WHEELS
Art. 5025
6,2 METERS PER ROLLS

Packaging



ADHESIVE STRIP

Example of mounting



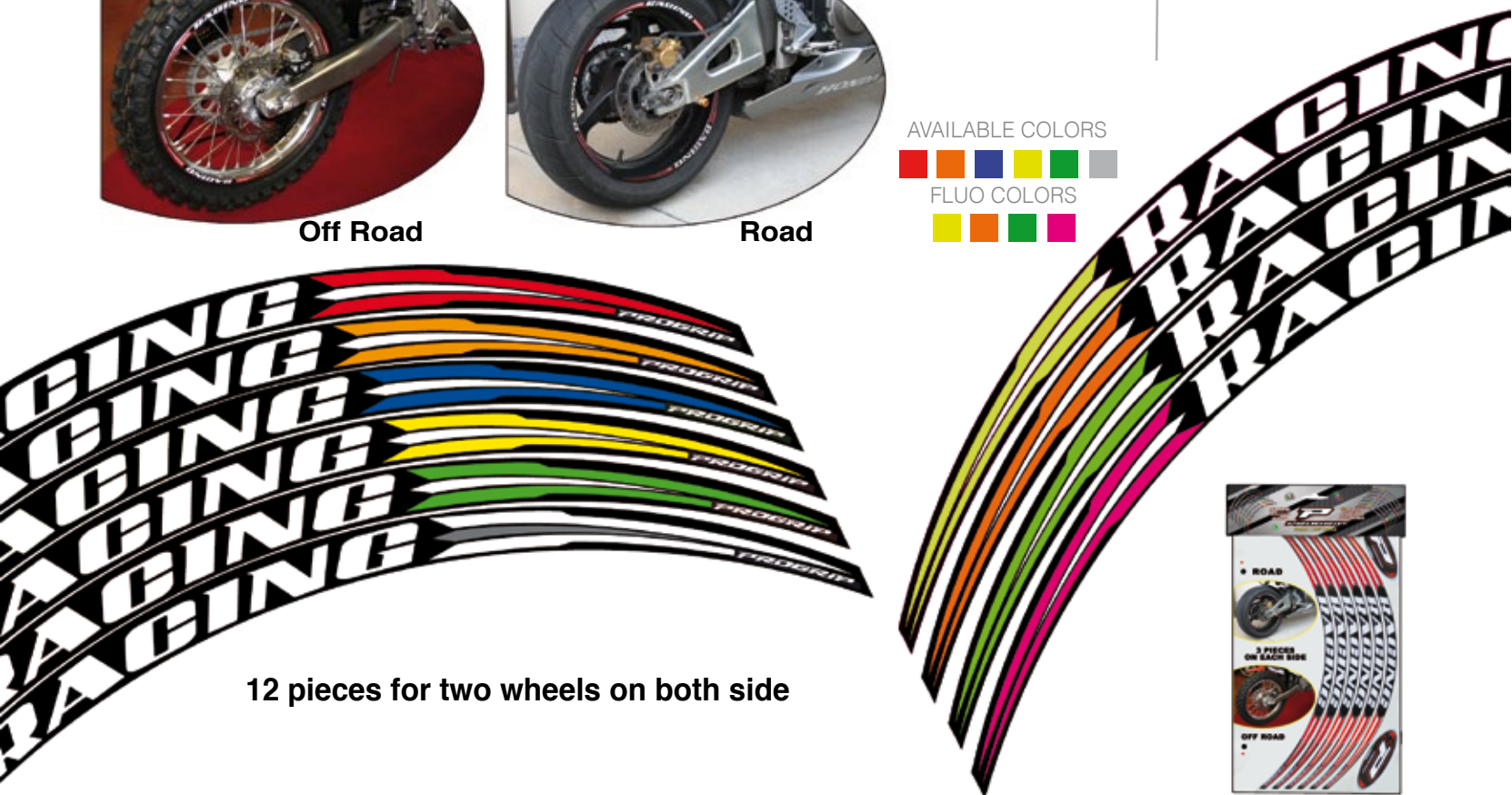
Off Road



Road

Art. 5026

AVAILABLE COLORS
FLUO COLORS



12 pieces for two wheels on both side



HELMET BAG



Art. 9510
HELMET BAG



FOR ONE
HELMET



GRIPS AND GOGGLE BAG

Art. 9520
GRIPS AND
GOGGLES BAG



ENDURO PACK

Mid-size pack that carries all your essential and more. One main compartment with velcro closure, second large compartment big enough for goggles or gloves, plus zippered pouch flap and two side pockets. Made of heavy-duty ballistic nylon.

AVAILABLE IN ONE COLOR: BLACK



Art. 9410

TOOLS ARE NOT INCLUDED

GRIP BOX

BOX 10 PAIR GRIPS



GEAR BAG



Art. 9500

A special "U" shaped zipper for easy access. Made with heavy-duty rip-stop nylon and strong nylon zippers.

AVAILABLE IN ONE COLOR: BLACK / RED

DISPLAY

NEW PRODUCT

Carton display kit of 14 goggles and 10 grips



Art. 9991

Metal display kit of 20 goggles and 72 grips



Art. 9990

Carton display kit of 10 goggles 3450



Art. 9992

Aluminium display



Art. 9995

SNOW WORLD



3460 SNOW GOGGLES MIRRORED

E-COMMERCE ON LINE: www.progrip.com

Double lens:
- OUTSIDE multilayered mirrored
- INSIDE light sensitive

Art. 3460 FL
Cyan



Art. 3460 FL
Orange Fluo



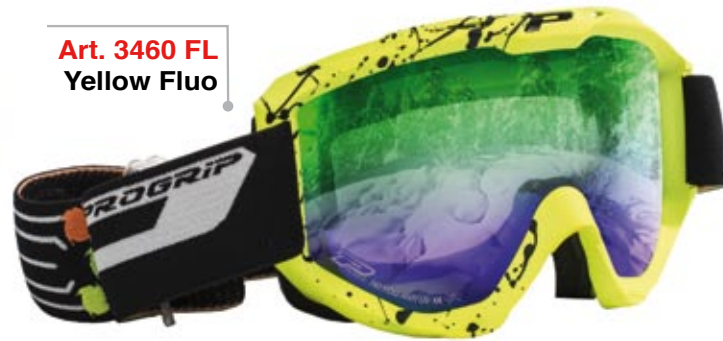
Art. 3460 FL
Red Fluo



Art. 3460 FL
Green Fluo



Art. 3460 FL
Yellow Fluo



Double density foam with hydro repellent and colored velvet



Made in Italy

- ANTI SCRATCH
- ANTI U.V.
- NO FOG
- COLORED VELVET

Homologation : AC - 96025 REV.2

3455 SNOW GOGGLES E-COMMERCE ON LINE: www.progrip.com

15 mm Extra large Foam

- ANTI SCRATCH
- ANTI U.V.
- NO FOG
- LIGHT SENSITIVE
- COLORED VELVET

Art. 3455
White/Black



Double density foam with hydro repellent and colored velvet

15 mm Extra large Foam



Art. 3455
Orange/Black



Art. 3455
Green/Black



Art. 3455
Fuxia/Black



Art. 3455
Blue/Black



Art. 3455
Red/Black



Art. 3455
Yellow/Black



Made in Italy

Homologation : AC - 96025 REV.2

3200 SNOW GOGGLES MIRRORED

RUBBER MATT FRAME - LENS MUTILAYERED

E-COMMERCE ON LINE: www.progrip.com



Art. 3200
Green



Art. 3200
Red

Art. 3200
Yellow

Art. 3200
Blue



Art. 3200
Silver



Art. 3200
Orange



Homologation : AC - 96025 REV.2



Double density foam with hydro repellent and colored velvet

- ANTI SCRATCH
- ANTI U.V.
- NO FOG

Made in Italy

3460 SNOW GOGGLES MIRRORED

RUBBER MATT FRAME - DOUBLE LENS MUTILAYERED

E-COMMERCE ON LINE: www.progrip.com

Art. 3460
SF RED



Art. 3460
SF ORANGE



- ANTI SCRATCH
- ANTI U.V.
- NO FOG

Art. 3460
MACULATO



Double density foam with hydro repellent and colored velvet

SNOW LENSES

FOR GOGGLES 3200 - 3450 - 3455 - 3460



Art. 3462
Multilayered BLUE
Double lens
Light Sensitive



Art. 3461
Multilayered RED
Double lens
Light Sensitive



Art. 3463
Multilayered GREEN
Double lens
Light Sensitive



Art. 3261
Double lens - CLEAR LS



Art. 3242
Double lens - MIRRORRED



Art. 3244
Double lens - POLARIZED



Art. 3280
Double lens - BLUE MIRRORRED



Art. 3256
Double lens - YELLOW



Art. 3255
Double lens - RED



Art. 3257
Double lens - BLUE



Art. 3260
Double lens - ORANGE



Art. 3295
Spheric - MIRRORRED



Art. 3297
RAINBOW



Art. 3252
Multilayered - SILVER

Made in Italy

SPORTSWEAR

T-SHIRT - CAP - CLASSIC VEST



Art. 7502
Blue Navi
MAN



SIZES FROM
S to XXL



Art. 7502
White Navi
MAN



SIZES FROM
S to XXL



Art. 7503
Pink / White
WOMAN



SIZES FROM
S to L

Made in Italy



Art. 9012
Classic Vest



SIZES FROM
XS to XXL

Resined with water repellent technology, three pockets outside with zip, one pocket inside - Quilt padding - large embroidery logo on back.

WATER PROOF RAIN JACKET

ADULT SIZES FROM
M to XXL
YOUTH SIZES FROM
S to XL



ADULT Art. 7802
YOUTH Art. 7801
WATER PROOF



TRANSPARENT

Art. 7800
JACKET + PANTS
WATER PROOF



SIZES FROM
S to XXL



REFLECTIVE LOGO

SPORTSWEAR

Art. 7701 SUMMER
Dual sport pants
Classic



GREAT FEATURE

SIZES FROM
28 to 38

Manufactured with jeans fabric - resined with water repellent technology, three pockets outside with zip, one pocket inside - Quilt padding - large embroidery logo on back.



Art. 7700 WINTER
Dual sport pants
Detachable legs



SIZES FROM
28 to 38

Manufactured with jeans fabric - resined with water repellent technology, three pockets outside with zip, one pocket inside - Quilt padding - large embroidery logo on back.



Art. 7750 JACKET
JEANS TYPE

SIZES FROM
XS to XXL



Manufactured with jeans fabric - resined with water repellent technology, three pockets outside with zip, one pocket inside - Quilt padding - large embroidery logo on back.

SPORTSWEAR PANTS



AVAILABLE COLORS
GREY / BLACK

100 % Polyester
30 % Nylon



Art. 7703
WINTER PANTS

SIZES FROM
28 to 38



Art. 7702
WINTER PANTS

SIZES FROM
28 to 38

100 % Polyester
30 % Nylon

SPORTSWEAR SHIRT

Art. 7504
Black



Art. 7504
White



SIZES FROM
S to XXL

SPORTSWEAR CAP



Art. 9999 Hat
100 % Cotton



Art. 9998 Cap
100 % Polyester



Art. 9600 Cap
100 % Acrilic



Art. 9601 Cap
100 % Cotton

SPORTSWEAR T-SHIRT

SIZES FROM
XS to XXL



Art. 7510
PURPLE



Art. 7510
CYAN



Art. 7510
YELLOW



Art. 7510
GREEN

SPORTSWEAR SOCKS

SIZES
S/M L/XL

COTTON - POLYESTER - LYCRA



Art. 9997
LONG



Art. 9996
SHORT

BOSS HELMET JX-1

FREERIDE - MTB



FREERIDE - MTB

Art. 3055
Orange Fluo



Art. 3055
Yellow Fluo

FREERIDE - MTB



Art. 3055
Grey

FREERIDE - MTB



Bug net



Adjustable size fitting

PROFESSIONAL RACE GEAR

FREERIDE - DOWNHILL

7010 SIZES FROM
S to XXXL

6010 SIZES FROM
26 to 38

SPECIAL COLORS UP TO 5 SETS YOU CAN CHANGE COLORS

Freeride

Downhill

Art. 7011
FREERIDE
YLF/BLACK
SHORT



Art. 7012
DOWNHILL
GREY/BLACK
LONG



Art. 6011
FREERIDE
YLF/BLACK
SHORT



Art. 6012
DOWNHILL
GREY
BLACK
LONG



Made in Italy

MX and enduro jersey for adult made with high quality printed polyester with microholes for a perfect transpiration and comfort of riding. V-collar and printed elastic wrist bands are perfect to complete this great jersey.

SUNGLASSES

E-COMMERCE ON LINE: www.progrip.com

Made in Italy

3605 KURRIMINE

OPTICAL QUALITY

ANTI U.V.

MULTILAYERED LENS



Art. 3605-164
Yellow Fluo

BLUE MIRRORED MULTILAYERED LENS



Art. 3605-268
Blue Fluo

BLUE MIRRORED MULTILAYERED LENS



Box included
PAG. 139



Art. 3605-166
Orange Fluo

ORANGE MIRRORED MULTILAYERED LENS



Art. 3605-188
Green Fluo

GREEN MIRRORED MULTILAYERED LENS

3606 WITSAND

DUAL LAYERED LENS

ANTI U.V.

OPTICAL QUALITY



Art. 3606-259
Transparent Blue
BLUE MIRRORED LENS



Box included
PAG. 139



Art. 3606-260
Transparent Yellow
YELLOW MIRRORED LENS



Art. 3606-261
Transparent Fuxia
FUXIA MIRRORED LENS

SUNGLASSES

E-COMMERCE ON LINE: www.progrip.com

Made in Italy

3605 STINTINO

OPTICAL QUALITY

ANTI U.V.

DUAL LAYERED LENS



Art. 3605-102
Black
SILVER MIRRORED LENS



Art. 3605-101
White
BLUE MIRRORED LENS



Box included
PAG. 139

3605 CAMBORIÚ

OPTICAL QUALITY

ANTI U.V.

MULTILAYERED LENS



Art. 3605-263
Camo Orange
RED MIRRORED MULTILAYERED LENS



Art. 3605-262
Camo Yellow
GREEN MIRRORED MULTILAYERED LENS



Box included
PAG. 139

3607 HALONG [WOMAN]

OPTICAL QUALITY

ANTI U.V.

DUAL LAYERED LENS



Art. 3607-170
Light Blue Camo
BLUE MIRRORED LENS



Art. 3607-258
Camo Pink
SILVER MIRRORED LENS



Box included
PAG. 139

SUNGLASSES

E-COMMERCE ON LINE: www.progrip.com

Made in Italy

3605 MONTEGO

OPTICAL QUALITY

ANTI U.V.

MULTILAYERED LENS



Box included



Art. 3605-126
Black/White
RED MIRRORED MULTILAYERED LENS



Art. 3605-264
Electric Blue/Yellow Fluo
GREEN MIRRORED MULTILAYERED LENS



Art. 3605-265
Cyan/Orange
ORANGE MIRRORED MULTILAYERED LENS



Art. 3605-266
Fuxia/Cyan
VIOLET MIRRORED MULTILAYERED LENS



Art. 3605-267
Green Fluo/Blue
RED MIRRORED MULTILAYERED LENS



Art. 3605-130
Red/White
BLUE MIRRORED MULTILAYERED LENS

SUNGLASSES

E-COMMERCE ON LINE: www.progrip.com

Made in Italy

3606 MONTEREY

ANTI U.V.

OPTICAL QUALITY



Box included



Art. 3606-164
Yellow Fluo
BLUE MIRRORED LENS



Art. 3606-102
Black
SMOKED LENS



Art. 3606-101
White
BLUE MIRRORED LENS

BOX



CLEANING CLOTH

BICYCLE GRIPS



BBBY GRIPS

NO PHTALATES

Made in Italy

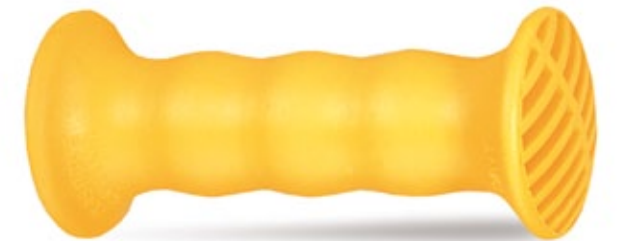
Art. 445

size: \varnothing mm 22 Long mm 75
AVAILABLE COLORS



Art. 453

size: \varnothing mm 19 - 22 Long mm 100
AVAILABLE COLORS



Art. 446

size: \varnothing mm 14 - 16 Long mm 90
AVAILABLE COLORS



Art. 454

size: \varnothing mm 19 Long mm 100
COMFORM ISO 8098 - DIN 79100/2
AVAILABLE COLORS



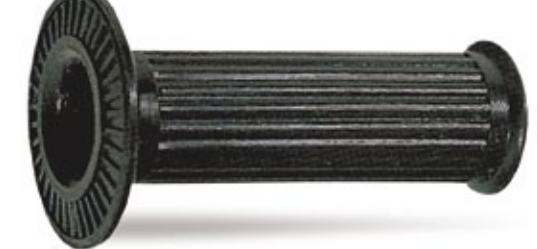
Art. 450

size: \varnothing mm 22 Long mm 88
COMFORM ISO 8098 - DIN 79100/2
AVAILABLE COLORS



Art. 455

size: \varnothing mm 16 - 18 Long mm 75
AVAILABLE COLORS



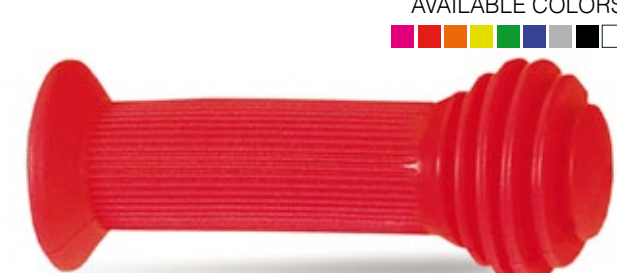
Art. 452

size: \varnothing mm 22 Long mm 88
AVAILABLE COLORS



Art. 486

size: \varnothing mm 18 - 19 Long mm 100
mm 22 without flange
COMFORM ISO 8098 - DIN 79100/2
AVAILABLE COLORS



BABY GRIPS

Made in Italy

NO PHTALATES

Art. 475

size: \varnothing mm 10 - 12 - 14 - 16 Long mm 70
AVAILABLE COLORS



Art. 453

size: \varnothing mm 19 - 22 Long mm 100
COMFORM ISO 8098 - DIN 79100/2
AVAILABLE COLORS



Art. 487

size: \varnothing mm 22 Long mm 105
COMFORM ISO 8098 - DIN 79100/2
AVAILABLE COLORS



Art. 454

size: \varnothing mm 19 - 22 Long mm 90
COMFORM ISO 8098 - DIN 79100/2



Example of color combination



Art. 480

size: \varnothing mm 8 - 10 - 12 Long mm 78
AVAILABLE COLORS



BABY PEDALS

NO PHTALATES

Art. 1700

size: \varnothing mm 8 Long mm 65
AVAILABLE COLORS:
BLACK - WHITE



Art. 1800

size: \varnothing mm 10 Long mm 65
AVAILABLE COLORS:
BLACK - WHITE



Art. 1950

size: \varnothing mm 8 Long mm 70
COMFORM ISO 8098 - DIN 79100/2
AVAILABLE COLORS:
BLACK - WHITE



BICYCLE GRIPS SINGLE DENSITY

Art. 499

size: \varnothing mm 22 - 23,5 Long mm 110



Art. 615

size: \varnothing mm 20 - 22 - 23,5 Long mm 100



Art. 506

size: \varnothing mm 22 Long mm 110



Art. 616

size: \varnothing mm 22 Long mm 100



Art. 508

size: \varnothing mm 19 - 22 - 23,5 Long mm 110



Art. 510

size: \varnothing mm 18 - 22 - 23,5 Long mm 105



Art. 531

size: \varnothing mm 22 Long mm 95



Art. 659

size: \varnothing mm 18 - 22 Long mm 105



Art. 660

size: \varnothing mm 22 - 23,5 Long mm 110



HARDNESS

MEDIUM SH 35 Total

Made in Italy

BICYCLE GRIPS SINGLE DENSITY

Art. 540
size: Ø mm 22 22 - 22 25 Long mm 120
HARDNESS SH 35 Total



ALSO FOR MOPED

Art. 539
size: Ø mm 19 - 22 Long mm 100
HARDNESS SH 35 Total



Art. 666
size: Ø mm 20 - 22 - 23,5 Long mm 110
HARDNESS SH 35 Total



Art. 668
size: Ø mm 22 - 23,5 Long mm 110
HARDNESS SH 35 Total



VINTAGE GRIPS OLD FASHION

Art. 670
size: Ø mm 22 Long mm 96



AVAILABLE COLORS



Art. 675
size: Ø mm 22 Long mm 98



AVAILABLE COLORS



Art. 680
size: Ø mm 22 - 23,5 Long mm 102



AVAILABLE COLORS



Art. 480
size: Ø mm 8 - 10 Long mm 75



EXAMPLE OF MOUNTING

Art. 830
size: Ø mm 9 Long mm 85



AVAILABLE COLOR



BMX GRIPS

Art. 930
size: Ø mm 22 22 Long mm 122
Double Density
AVAILABLE COLORS



Art. 760
size: Ø mm 22 22 Long mm 125
AVAILABLE COLORS



Art. 712
size: Ø mm 19 19 - 22 22 Long mm 110
AVAILABLE COLORS



Art. 744
size: Ø mm 22 22 Long mm 112
ANODIZED ALUMINIUM
AVAILABLE COLOR RING



Art. 937
size: Ø mm 22 22 Long mm 122
Single Density
AVAILABLE COLORS



Art. 728
size: Ø mm 22 22 Long mm 122
ANODIZED ALUMINIUM
AVAILABLE COLOR RING



Art. 720
size: Ø mm 22 22 Long mm 125
AVAILABLE COLORS



Art. 935
size: Ø mm 22 22 Long mm 145
AVAILABLE COLORS



HARDNESS

MEDIUM SH 35 Total

MTB GRIPS

MOUNTAIN BIKE

SHORT

Art. 748

size: Ø mm 22 Long mm 82



LONG

Art. 747

size: Ø mm 22 Long mm 122



Art. 738

size: Ø mm 22 Long mm 115



Art. 772

size: Ø mm 22 Long mm 130



Art. 745

size: Ø mm 22 Long mm 122



Art. 751

size: Ø mm 19 - 22 Long mm 115



Art. 746

size: Ø mm 22 Long mm 122



Packaging

Made in Italy

Art. 770

size: Ø mm 22 Long mm 122



Art. 777

size: Ø mm 22 Long mm 130



Art. 771

size: Ø mm 22 Long mm 135



BLACK FOAM

Art. 784

size: Ø mm 22 Long mm 130



Art. 773

size: Ø mm 22 Long mm 115



BLACK FOAM

Art. 785

size: Ø mm 22 Long mm 130



Art. 776

size: Ø mm 22 Long mm 130



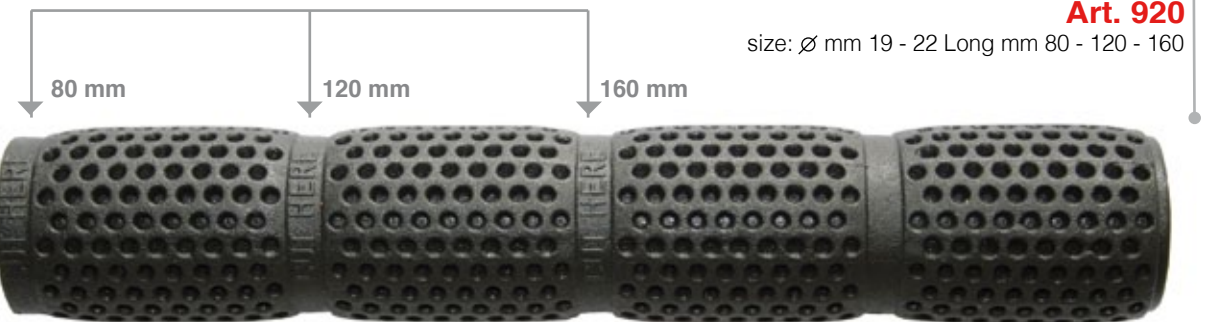
BLACK FOAM

Art. 787

size: Ø mm 22 Long mm 130



CUT HERE IF NEEDED



Art. 920

size: Ø mm 19 - 22 Long mm 80 - 120 - 160

MTB GRIPS

MOUNTAIN BIKE

Art. 838 SA

size: ø mm 22 Long mm 122
Double Density
AVAILABLE COLORS



LONG

Art. 927

size: ø mm 22 Long mm 122
Double Density
AVAILABLE COLORS



Art. 837 SA

size: ø mm 22 Long mm 122
Single Density
AVAILABLE COLORS



SHORT

Art. 926

size: ø mm 22 Long mm 85
Double Density
AVAILABLE COLORS



Art. 796 SA

size: ø mm 22 Long mm 125
Double Density
AVAILABLE COLORS



LONG

Art. 964 evo

size: ø mm 22 Long mm 120
Double Density
AVAILABLE COLORS - FLUO COLORS



Art. 963 evo

size: ø mm 22 Long mm 80
Double Density
AVAILABLE COLORS



Art. 808

size: ø mm 22 Long mm 120
Double Density
AVAILABLE COLORS - FLUO COLORS



Art. 999

size: ø mm 22 22 - Long mm 120
ANODIZED ALUMINIUM WITH LOCK
AVAILABLE COLORS



Art. 808

Green Fluo

Art. 808

Yellow Fluo

Art. 808

Orange Fluo

Art. 808

Fuxia Fluo



Art. 939

size: ø mm 22 22 - Long mm 120
ANODIZED ALUMINIUM
AVAILABLE COLORS



HARDNESS
HARD SH 58 Inside
GEL SH 15 Outside



Packaging

Made in Italy



HARDNESS
 HARD SH 58 Inside
 GEL SH 15 Outside

MTB GRIPS

MOUNTAIN BIKE

Art. 946

size: \varnothing mm 22 Long mm 100
 Double Density
 AVAILABLE COLORS



Art. 952

size: \varnothing mm 22 Long mm 85
 Double Density
 AVAILABLE COLORS



Art. 947

size: \varnothing mm 22 Long mm 125
 Single Density
 AVAILABLE COLORS



Art. 953

size: \varnothing mm 22 Long mm 122
 Double Density
 AVAILABLE COLORS



MTB SINGLE COLOR

MOUNTAIN BIKE

Art. 928

size: \varnothing mm 22 Long mm 80
 Single Density



Art. 929

size: \varnothing mm 22 Long mm 122
 Single Density



Art. 805

size: \varnothing mm 22 Long mm 80
 Single Density



Art. 806

size: \varnothing mm 22 Long mm 120
 Single Density



Art. 835

size: \varnothing mm 22 Long mm 83
 Single Density



Art. 836

size: \varnothing mm 22 Long mm 122
 Single Density



Art. 943

size: \varnothing mm 22 Long mm 95
 Single Density



Art. 944

size: \varnothing mm 22 Long mm 122
 Single Density



Art. 948

size: \varnothing mm 22 Long mm 100
 Single Density



Art. 949

size: \varnothing mm 22 Long mm 125
 Single Density



Art. 951

size: \varnothing mm 22 Long mm 75
 Single Density



Art. 954

size: \varnothing mm 22 Long mm 122
 Single Density



Art. 933

size: \varnothing mm 22 Long mm 125
 Single Density



Packaging

MTB SINGLE COLOR

MOUNTAIN BIKE

Art. 957

size: ø mm 22 Long mm 65
Single Density



Art. 977

size: ø mm 22 Long mm 50
Single Density



Art. 958

size: ø mm 22 Long mm 88
Single Density



Art. 962

size: ø mm 22 Long mm 65
Single Density



Art. 959

size: ø mm 22 Long mm 120
Single Density



Art. 967

size: ø mm 22 Long mm 85
Single Density



Art. 982

size: ø mm 22 Long mm 85
Single Density



Art. 973

size: ø mm 22 Long mm 100
Single Density



Art. 983

size: ø mm 22 Long mm 95
Single Density



Art. 976

size: ø mm 22 Long mm 125
Single Density



CITY BIKE GRIPS

Art. 989

size: ø mm 22 Long mm 120
HARDNESS SH 58 INSIDE
SH 15 OUTSIDE



Art. 988

size: ø mm 22 Long mm 85
HARDNESS SH 58 INSIDE
SH 15 OUTSIDE



Art. 969

size: ø mm 22 Long mm 120
Single Density



Art. 968

size: ø mm 22 Long mm 85
Single Density



Art. 932

size: ø mm 22 Long mm 125
HARDNESS SH 58 INSIDE
SH 15 OUTSIDE



Art. 931

size: ø mm 22 Long mm 85
HARDNESS SH 58 INSIDE
SH 15 OUTSIDE



Art. 942

size: ø mm 22 Long mm 120
Single Density

942
BRAND LOGO ON DEMAND
Special models produced on design
for O.E.M. on exclusive basis, are not
shown on this catalog



Art. 941

size: ø mm 22 Long mm 95
Single Density



Art. 987

size: ø mm 22 Long mm 125
HARDNESS SH 58 INSIDE
SH 15 OUTSIDE



Art. 932 Fluorescent

size: ø mm 22 Long mm 125
HARDNESS SH 58 INSIDE
SH 15 OUTSIDE



INDUSTRY HANDGRIPS

RECTANGULAR 20 X 6
size: Ø mm 10 16 18 20 Long mm 100



Art. 520

Art. 704
size: Ø mm 22 22 - 22 25 Long mm 120



Art. 720
size: Ø mm 22 22 - 22 25 Long mm 125



Art. 756
size: Ø mm 22 22 - 22 25 Long mm 105



Art. 650
size: Ø mm 22 Long mm 120



Art. 1015
size: Ø mm 25 27 Long mm 130



Available sizes:
Art 870
INSIDE OUTSIDE
Ø 20 mm Ø 27 mm
22 mm 29 mm
20 mm 30 mm
Art 860
Ø 25 mm Ø 35 mm

FOAM TUBE Art. 870



Art. 1785



Art. 1870



Art. 2010
size: Ø mm 22 25



Art. 1786



Art. 1875



Art. 2015



Art. 1000
size: Ø mm 25 27 28 Long mm 120



Art. 1002
size: Ø mm 25 Long mm 115



Art. 1010
size: Ø mm 30 31 32 Long mm 120



Art. 1012
size: Ø mm 32 Long mm 120



Art. 1020
size: Ø mm 22 25 27 Long mm 160



Made in Italy

HORN SPORT GRIPS

Art. 778
Ø mm 22 22
Ø mm 22 19
Long mm 345



Art. 779
Ø mm 22 19
Long mm 330



Art. 887
Ø mm 22 22
Ø mm 22 19
Ø mm 19 19
Long mm 275



Art. 888
Ø mm 22 22
Ø mm 22 19
Long mm 300



Art. 889
Ø mm 19 19
Long mm 325



SPONSORED TEAM / RIDERS

2017



TEAM DE CARLI
KTM
ANTONIO CAIROLI **MXGP**



JTECH RACING
SUZUKI
KEN DE DICKER **MXGP**
EMIL WEKMAN **EU125**



TM RACING
TM
SAMUELE BERNARDINI **MX2**



TEAM MICHELE RINALDI
YAMAHA
VAN HOREBBEK **MXGP**
ROMAIN FEBVRE **MXGP**



ICE ONE RACING
HUSQVARNA
MAX ANSTIE **MXGP**
MAX NAGL **MXGP**



SILVER ACTION
KTM
DAVIDE BONINI **MX2**
DAVIDE CISLAGHI **MX2**



MARCHETTI RACING
KTM
JOSE BUTRON **MXGP**
IVO MONTICELLI **MXGP**



TM RACING
EUROPEO EMX 125
MATTIA GUADAGNINI
PAOLO LUGANA



MARCHETTI RACING
KTM - EUROPEO
VALENTE **EU300**
FACCA **EU125**
LATA **EU85**



SDM RACING
YAMAHA - MX2
VAN DE MOOSDIJK
MAXIME RENAUX
KARLIS SABULIS



TEAM 24MX
HONDA - MX2
MILGO POTISEK



GHIDINELLI RACING
YAMAHA
GIANLUCA DEGHI
STEFANO PEZZUTO



TEAM MADDII
HUSQVARNA
GIANLUCA FACCHETTI



CEC SCANDINAVIAN
KTM
BENGTSSON JONATHAN



MX GIRLS
HUSQVARNA
ALICE MAGNOLI



ASD RT973
YAMAHA
MAHY VILLANUEVA



CH RACING SHERCO
ENDURO
MATTEW PHILLIPS
BEN KEARNS



JOLLY TEAM
ENDURO
BARBOSA RUY
MATTEO BRESOLIN
ALEX FAVARI
ALESSANDRO TRAMELLI



TM RACING
ENDURO
EERO REMES
MANUEL MONNI
EMANUELE FACCHETTI
ANDREA VERONA



FREE RACING
KTM
OSCAR POLLI



TEAM DABOOT
FREESTYLE
DARIO AZZOLINI
LUCA BERTOLA
ALBERTO PROSDOCIMI



TEAM MR
YAMAHA
EMANUELE ALBERIO



CF RACING
ENDURO
JACOPO CERUTTI



DRT TEAM
KTM
RAFFAELE GIUZIO



TEAM LOMBRICI
YAMAHA
ROBERTO LOMBRICI



LCR X RACING
MOTOGP - HONDA
CAL CRUTCHLOW



ASPAR TEAM
MOTOGP - DUCATI



ALTHEA RACING
SBK - BMW



TEAM SERILGARDA
SBK - DUCATI



TEAM PEDERCINI
SBK - KAWASAKI



MRM ASS.SPORTIVA
CIV



TEAM ROSMAS
MOTOCICLISMO
BOTTARI MASSIMO



ASD MANICI RACING
VELOCITA IN SALITA
STEFANO MANICI



MOTOCUB OLIMPIA
SPEEDWAY
NICOLAS COVATTI

GAZZA RACING

Europeo SUPERMOTO Grecia 2017

Luca Ciaglia

La Plastiche Cassano è costantemente alla ricerca di nuove tecnologie per migliorare i propri prodotti partendo dalle caratteristiche di progettazione e lavorazione.

Nella rincorsa di tali obiettivi, tutto ciò che è Plastiche Cassano è soggetto a continui miglioramenti. Non allarmatevi quindi, se suggeriamo di non considerare il presente catalogo, come guida infallibile degli standard proposti e nemmeno di interpretarlo come punto di vista "perfetto" degli stessi prodotti.

Plastiche Cassano is constantly looking for new technologies to improve their product lines, starting from the design and manufacturing aspects. Following this objective, every part of the manufacturing philosophy of PLASTICHE CASSANO is subject to continued improvements.



REGISTERED TRADE MARK



GRAPHIC CONCEPT BY:

GAZZA RACING

P
PROGRIP



PROGRIP.COM

PROGRIP is a trademark of Plastiche Cassano s.r.l. 21012 CASSANO MAGNAGO (VA) ITALY
Via G. Gasparoli n.112 Phone : +39 0331 206652 Fax : +39 0331 206606 www.progrip.com E-mail : progrip@progrip.it