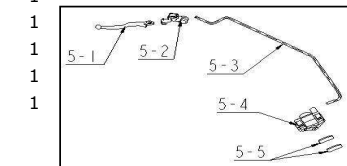
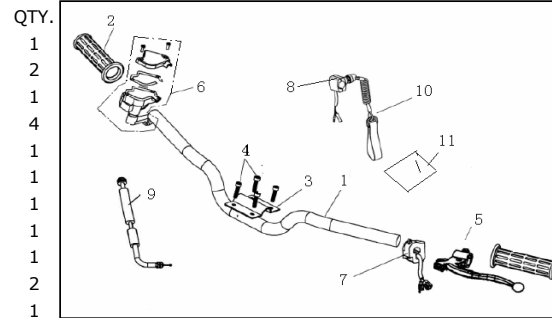


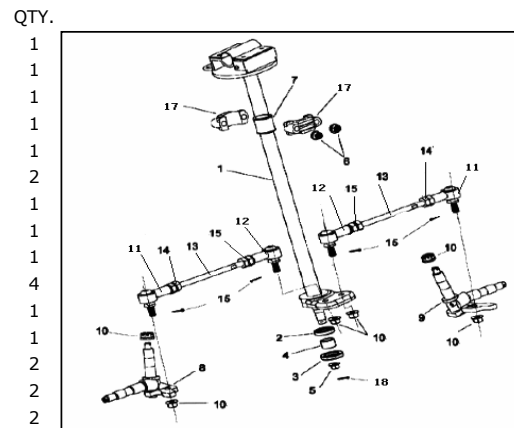
HANDLE BAR

NO.	CODE	
1	G0100001G20F000	HANDLE BAR
2	40002JB00S000	GRIP HANDLE BAR CLAMP
3	40003JB00S000	HANDLE BAR CLAMP, CAP
4	B01310603063	BOLT M6X30
5	G0100000G20F000	HYDRAULIC BRAKE ASSY
5-1	G0100010G20F000	HANDLE
5-2	G0100020G20F000	RETAINER
5-3	G0100030G20F000	CABLE, HYDRAULIC BRAKE
5-4	G0100040G20F000	RETAINER
5-5	G0100050G20F000	SHEET FRICTION
6	40200JB00S000	RIGHT LEVER ASSY.
7	70200JB00S000	HANDLE BAR ASSY. (LEFT)
8	70400JB00S000	HANDLE BAR SAFETY ASSY
9	G0100000G19F000	CABLE ASSY THROT
10	G0200000G20F000	KEY
11	G0200001G20F000	PLASTIC BAG



FRONT FORK

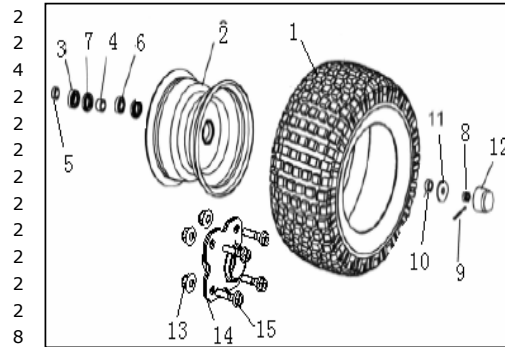
NO.	CODE	
1	43200JB00S000	SHAFT, STEERING
2	B1701FB18327	OIL SEAL($\varphi 18 \times \varphi 32 \times 7$)
3	B1701FB22357	OIL SEAL($\varphi 22 \times \varphi 35 \times 7$)
4	57003JB00S000	INNER SPACER($\varphi 15 \times \varphi 21.7 \times 15$)
5	B04411415042	NUT, FLANGE CHECK (M14)
6	B04410800043	NUT, FLANGE CHECK (M8)
7	43004JB00S000	PU LINER
8	43500JB00S000	KNUCKLE, LEFT
9	43600JB00S000	KNUCKLE, RIGHT
10	B04411012543	NUT ,FLANGE CHECK (M10)
11	43800JB00S000	UNIVERSAL JOINT(L)
12	43700JB00S000	UNIVERSAL JOINT(R)
13	43002JB00S000	BOLT,STUD
14	B04201012542	NUT (L)
15	B04201012542	NUT (R)
16	B09000203002	COTTER PIN
17	43001JB00S000	HOLDER, STEERING SHAFT
18	B09000303002	COTTER PIN



FRONT WHEEL

NO.	CODE	
1	54101JB00S000	WHEEL TIRE(145×70-6)
2	G4000001G19F000	CIRCULAR RIM,ALLOY
3	B1701FB22357	OIL SEAL(ψ22×ψ35×7)
4	57003JB00S000	SPACER(ψ15×ψ21.7×15)
5	44003JB00S000	SPACER (ψ17×ψ21.7×17)
6	B12066002G00	BEARING 6002-2RS
7	B12066003G00	BEARING 6003-2RS
8	B04451415042	NUT,CASTLE(M14X1.5)
9	B09000303002	COTTER PIN
10	44002JB00S000	SPACER(ψ15×ψ21.7×12)
11	44001JB00S000	WASHER (ψ40×ψ14×4.5t)
12	54002JB00S000	RUBBER CAP
13	B04411000043	NUT M10
14	G4010000G19F000	CONNET ASSY.
15	B01311003563	SCREW M10X35

QTY.

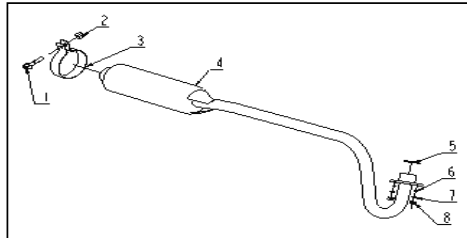


2
2
2
4
2
2
2
2
2
2
2
2
2
2
2
2
2
8

MUFFLER

NO.	CODE	
1	B01310606563	BOLT M8X65
2	B04410800043	NUT M8
3	36000002G19F000	MUFLER RETAINER
4	36100000G19F000	MUFFLER JOINTING ASSY.
5	36000001G19F000	GASKET, EXHAUST PIPE
6	B070100060B2	WASHER 6
7	B070000060B2	SPRING WASHER 6
8	B04340600005	NUT M6

QTY.

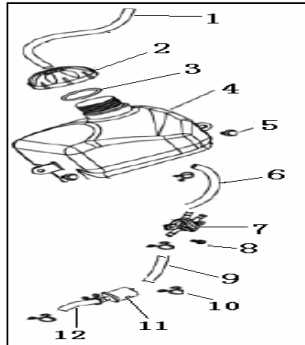


1
1
1
1
1
2
2
2

FUEL TANK

NO.	CODE	
1	50002JB00S000	BREATHE TUBE
2	50100JB00S000	CAP, FUEL TANK
3	50003JB00S000	RUBBER PAD
4	H0000001G19F000	FUEL TANK JOINTING COMP.
5	B13200602073	BOLT (M6×20)
6	50004JB00S000	FUEL TUBE I
7	50200JB00S000	FUEL TANK SWITCH
8	B02210502064	SCREW M5X20
9	50005JB00S000	FUEL TUBE II
10	50008JB00S000	CLIP 9.7
11	50300JB00S000	FILTER COMP FUEL
12	50006JB00S000	FUEL TUBE III

QTY.

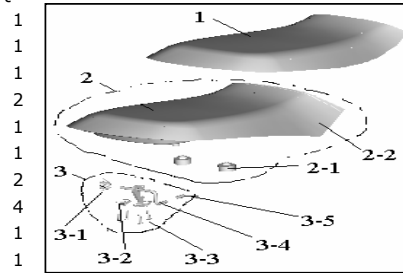


1
1
1
1
2
1
1
2
1
6
1
1

SEAT

NO.	CODE	
1	51105JB00S000	SEAT PLASTIC BAG
2	51100JB00S000	SEAT ASSY.
2-1	51101JB00S000	SEAT BODY
2-2	51104JB00S000	RUBBER PAD
3	51200JB00S000	SEAT FIXER ASSY
3-1	51201JB00S000	SPRING
3-2	51203JB00S000	FASTNESS HODER
3-3	B050048015B2	SCREW 4.8
3-4	51210JB00S000	LOCK
3-5	51202JB00S000	RUBBER SLEEVE

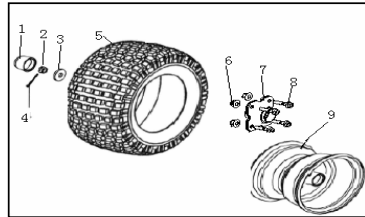
QTY.



REAR WHEEL

NO.	CODE	
1	54002JB00S000	RUBBER CAP
2	B04451415042	NUT(M14X1.5)
3	54001JB00S000	WASHER (φ40×φ14×4.5t)
4	B09000303002	COTTER PIN
5	54101JB00S000	WHEEL TIRE (145×7-6)
6	B04411000043	NUT M10
7	G4010000G19F000	CONNET ASSY.
8	B01311003563	SCREW M10X35
9	G4000001G19F000	CIRCULAR RIM, ALLOY

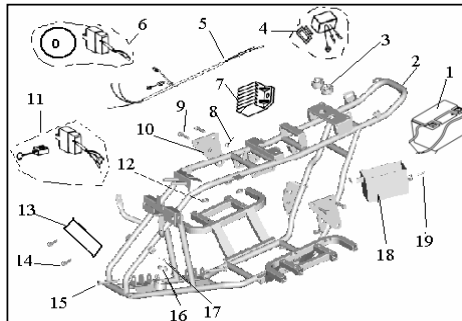
QTY.



FRAME

NO.	CODE	
1	15124B010000	BATTERY
2	H9100000G19F000	FRAME COMP.
3	57002JB00S000	RUBBER DAMPER
4	225105.050000	IGNITION
5	M0100000G19F000	MAIN WIRE ASSY.
6	M0200000G19F000	GUARD AGAINST THEFT
7	225106,01	MANOSTAT
8	B04410800043	NUT,FLANGE CHECK
9	B01070802564	SCREW (M8×25)
10	H9000003G19F000	FIXING PLATE
11	225217,01	RELAY
12	65008JB00S000	ABSORB WASHER
13	H9000006G19F000	NAMEPLATE
14	B10160301002	RIVET
15	B01310807063	BOLT,FLANGE
16	B12066002M00	BEARING (6002-2Z)
17	B080603235A1	CLIP
18	58000JB00S000	BATTERY BOX
19	B02040601662	SCREW (M6x16)

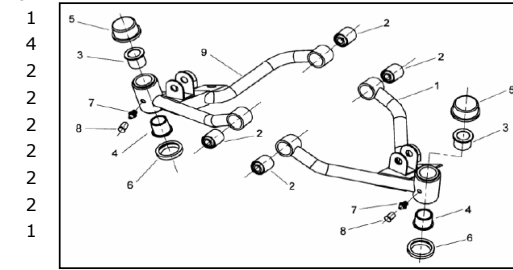
QTY.



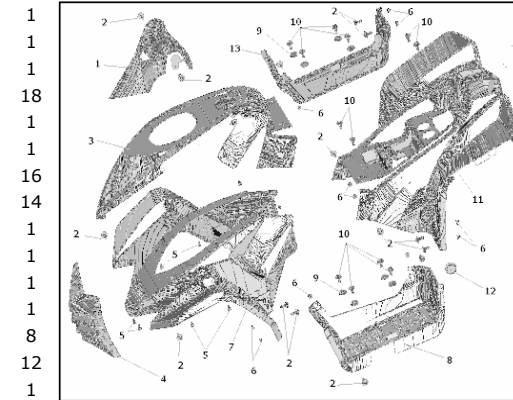
FRONT SWINGARM

NO.	CODE	
1	43300JB00S000	ARM, SUSPENSION, L.H.
2	43320JB00S000	BUSH (ψ20×ψ8.1×21×24)
3	43303JB00S000	OIL LINER(ψ15.5)
4	43305JB00S000	OIL LINER(ψ17)
5	43003JB00S000	WATERPROOF COVER
6	43304JB00S000	DUST SEAT
7	43301JB00S000	GREASE VALVE(1/4")
8	43302JB00S000	CAP, GREASE VALVE
9	43410JB00S000	ARM, SUSPENSION, R.H.

QTY.



QTY.



OVER (WHITE,SILVER,BLUE ARE AVAILABLE)

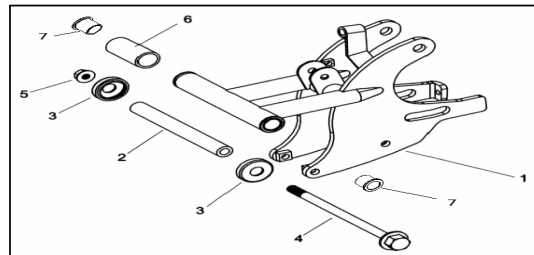
NO.	CODE	
1-1	65006JB00S000W	COVER, HANDLE BAR,WHITE
1-2	65006JB00S000S	COVER, HANDLE BAR,SILVER
1-3	65006JB00S000B	COVER, HANDLE BAR,BLUE
2	B13120601633	SCREW M6X16
3	65001JB00S000	COVER
4	65007JB00S000	COVER FENDER BAR
5	B05004801202	SCREW
6	B04280600043	NUT FLANG M6
7-1	65004JB00S000W	FRONT FENDER,WHITE
7-2	65004JB00S000S	FRONT FENDER,SILVER
7-3	65004JB00S000B	FRONT FENDER,BLUE
8	65002JB00S000	LEFT FOOTREST
9	65010JB00S000	ABSORB WASHER
10	B13120602032	SCREW M6X20
11-1	65005JB00S000W	REAR FENDER,WHITE
11-2	65005JB00S000S	REAR FENDER, SILVER
11-3	65005JB00S000B	REAR FENDER,BLUE
12	65009JB00S000	CAP RUBBER
13	65003JB00S000	RIGHT FOOTREST

QTY.

SWINGARM

NO.	CODE	
1	H9210000G19F000	SWING ARM SUB ASSY.
2	57301JB00S000	SWING ARM SPACER
3	57320JB00S000	SWING ARM SEAL COVER
4	57302JB00S000	SWING ARM SET BOLT
5	B04411012542	NUT,FLANGE CHECK(M10)
6	57303JB00S000	RUBBER SLEEVE
7	43305JB00S000	OIL LINER(ψ17)

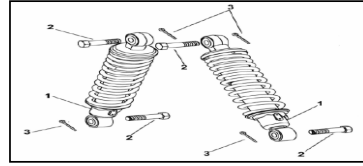
QTY.



FRONT SUSPENSION

NO.	CODE	
1	G3100000G19F000	SUSPENSION FRONT
2	B01111004062	BOLT, PIN HOLE(M10×40)
3	B09000203002	COTTER PIN

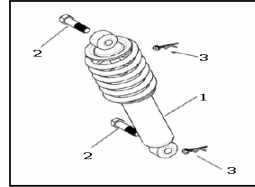
QTY.
2
4
4



REAR SUSPENSION

NO.	CODE	
1	H3100000G19F000	SHOCK ABSORBER ASSY. REAR
2	B01111004062	BOLT, PIN HOLE(M10×40)
3	63001JB00S000	COTTER PIN

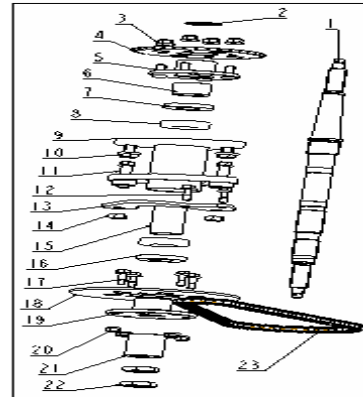
QTY.
1
2
2



REAR WHEEL AXLE

NO.	CODE	
1	J0000001G19F000	REAR AXLE
2	60003JB00S000	WASHER($\psi 42 \times \psi 35 \times 1.8$)
3	B04171000064	NUT 10, FLANGE CHECK
4	J0000008G19F000	GEAR(420×38T)
5	60100JB00S000	SPROCKET HOLDER, REAR
6	J0000002G19F000	SPROCKET HOLDER, REAR
7	B1701FB42558	OIL SEAL($\gamma 42 \times \gamma 55 \times 8$)
8	B12066006G00	BEARING(60062RS)
9	J0110000G20F000	REAR WHEEL BRAKING SEAL ASSEMBLY
10	B01311202062	SCREW, FLANGE (M12×20)
11	B01311205062	SCREW, FLANGE (M12×50)
12	B01310802062	SCREW, FLANGE (M8×20)
13	J0000004G20F000	BRAKE FIXED PLATE
14	B04171200064	NUT 12, FLANGE CHECK
15	60201JB00S000	SPACER(36×2.5×63)
16	B1701FB38558	OIL SEAL($\gamma 38 \times \gamma 55 \times 8$)
17	B02060802581	SCREW M8*25
18	J0000005G20F000	BRAKE PLATE
19	J0000006G20F000	BRAKE HOLDER
20	B04170800064	NUT 8, FLANGE CHECK
21	J0000007G20F000	SPACE SLEEVE
22	60006JB00S000	NUT, REAR WHEEL AXLE
23	J0000003G19F000	DRIVE CHAIN ASSY. (420×74)

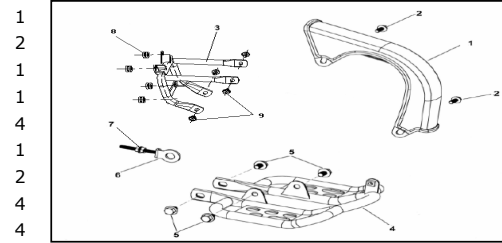
QTY.
1
2
4
1
1
1
1
1
2
1
2
2
1
2
2
1
2
4
1
1
4
1
2
1



FEND BAR

NO.	CODE	DESCRIPTION
1	57001JB00S000	PROTECT COVER
2	B13230603073	BOLT,HEXAGON HEAD(M6×30)
3	57200JB00S000	FEND BAR ASSY.
4	H9300000G19F000	BELOW PROTECT COVER
5	B01310801663	BOLT,FLANGE(M8×16)
6	57800JB00S000	CHAIN ADJUSTER
7	B04280600042	NUT M6
8	57004JB00S000	RUBBER WASHER
9	B01310801262	BOLT,FLANGE(M8×12)

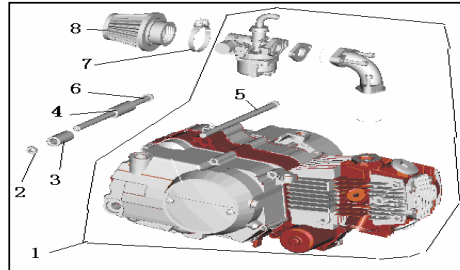
QTY.



ENGINE ATTACHMENT

NO.	CODE	DESCRIPTION
1	1010402,001	ENGINE
2	B04411012542	NUT M10X1.25
3	H9000001G19F000	SCREW M6X20
4	H9000002G19F000	SPRING WASHER
5	H9000004G19F000	AXIS FRONT
6	57302JB00S000	AXIS
7	10200000G19F000	RETAINER
8	10100000G19F000	AIR CLEANER

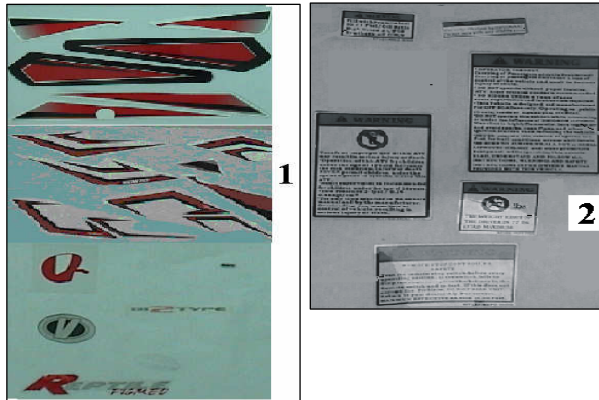
QTY.



STICKER

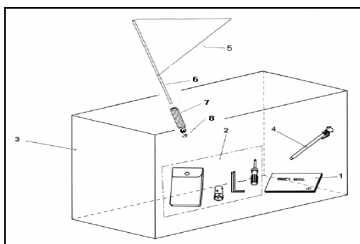
NO.	CODE	DESCRIPTION
1	05100JB00S000	STICKER
1-1	05101JB00S000	STICKER,FRONT FENDER(L)
1-2	05102JB00S000	STICKER,FRONT FENDER(R)
1-3	05103JB00S000	STICKER,MID FENDER(L)
1-4	05104JB00S000	STICKER,MID FENDER(R)
1-5	05105JB00S000	STICKER,REAR FENDER
1-6	05106JB00S000	STICKER,CE
1-7	05107JB00S000	STICKER,NAME
1-8	05108JB00S000	STICKER MINI ATV
2	05200JB00S000	STICKER, WARNING
2-1	05201JB00S000	STICKER, WARNING 01
2-2	05202JB00S000	STICKER, WARNING 02
2-3	05203JB00S000	STICKER, WARNING 03
2-4	05204JB00S000	STICKER, WARNING 04
2-5	05205JB00S000	STICKER, WARNING 05
2-6	05206JB00S000	STICKER, WARNING 06

QTY.



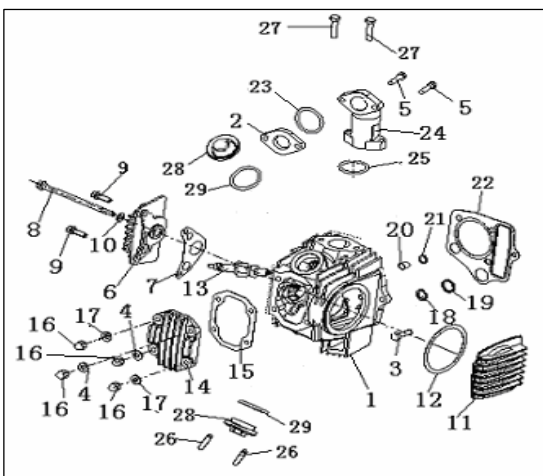
PACKING

NO.	CODE		QTY.
1	02401JB00S000	OWNER'S MANUAL	1
2	02200JB00S000	TOOL SET	1
3	02300JB00S000	PACKING CASE , EXTERNAL	1
4	02402JB00S000	TIRE PRESSURE GAUGE	1
5	02123JB00S000	FLAG	1
6	02121JB00S000	FLAG HOLDER	1
7	02110JB00S000	FLAG HOLDER SEAT	1
8	B04411012542	NUT,FLANG M10	2



CYLINDER HEAD ASSY

NO	CODE		QTY
1	201100,1	CYLINDER HEAD COM	1
2	32101G03F000	SEPERATOR PLATE	1
3	B01120602444	BOLT	1
4	30515G03F000	WASHER	2
5	B01110602864	BOLT	2
6	30750G03F001	R-COVER COMP	1
7	30751G03F000	WASHER, R-COVER	1
8	B01070611064	BOLT	1
9	B01070602064	BOLT	2
10	30725G03F000	WASHER	1
11	201305,002	L-HEAD	1
12	30724G03F000	WASHER, L-head	1
13	30506J02F000	SPARK PLUG	1
14	30701G03F000	CYLINDER HEAD	1
15	30707G03F000	WASHER	1
16	30509G03F940	CAP NUT	4
17	30526G03F000	WASHER	2
18	30524G03F000	BUSH	1
19	30522G03F000	SEAL	1
20	30525G03F910	BUSH	1
21	30523G03F000	SEAL	1
22	30503F01F000	GASKET	1
23	32103G03F000	O RING	1
24	307992020030	PIPE,intake	1
25	30107J02F001	O RING	1
26	30209J02F000	STUD	2
27	B01030602564	BOLT	2
28	30114G03F000	VAVLE HEAD	1
29	30107J02F000	O RING	2

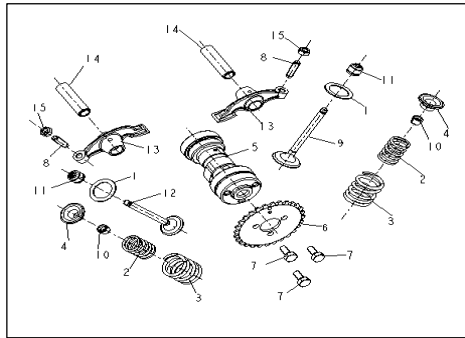


CYLINDER HEAD ASSY

NO	CODE	
1	30208H03F930	RETAINER, valve spring
2	30102H03F930	SPRING, valve inner
3	30101H03F930	SPRING, valve outer
4	30106J05F930	SEAT, valve spring
5	30400G08F000	CAMSHAFT ASSY
6	30404G03F000	SPROCKET, camshaft
7	B01030501263	BOLT
8	30303H03F000	SCREW, adjusting
9	30103G03F000	VALVE, intake
10	30108H02F000	COTTER, valve
11	30104H03F000	OIL SEAL, valve
12	30201G03FU10	VALVE, exhaust
13	30301G03F000	ARM, valve rocker
14	30306G03F000	SHAFT, valve rocker
15	30302H03F930	NUT, adjusting

QTY

2
2
2
2
1
1
3
2
1
2
2
1
2
2
2
2

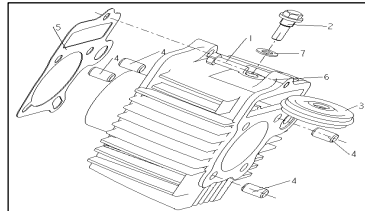


CYLINDER ASSY

NO	CODE	
1	B01120602044	SCREW
2	27104G03F920	SHAFT, chain guide
3	27318H06F000	CHAIN GUIDE COMP
4	26208G03F000	PIN
5	27102G03F000	GASKET, cylinder
6	204200,1	CYLINDER
7	24103G03F000	WASHER

QTY

1
1
1
4
1
1
1

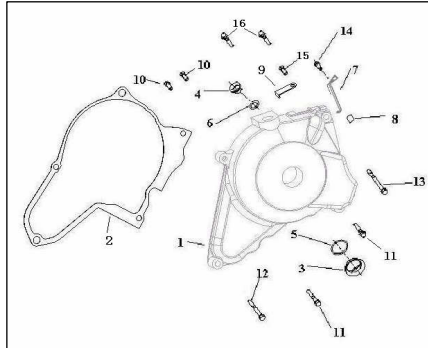


MAGNETO COVER ASSY

NO	CODE	
1	207200,1	COVER, magneto
2	207208,05	GASKET, cover magneto
3	14104J01F000	PLUG, cover magneto
4	14105J01F000	PLUG, see
5	14115J01F000	O RING
6	14116J01F000	O RING
7	207232,02	CLIP
8	14125G03F000	GROMMET
9	207240,003	STOPPER ASSY
10	B02040501263	SCREW
11	B01070603264	BOLT
12	B01070602564	BOLT
13	B01070605064	BOLT
14	B02040601223	SCREW
15	B02040500623	SCREW
16	B01070601664	BOLT

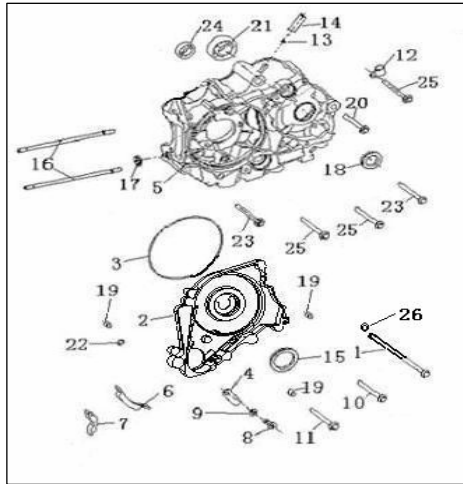
QTY

1
1
1
1
1
1
11
1
1
3
2
1
1
1
1
1
2



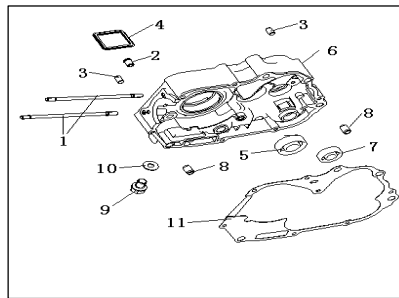
LEFT CRANKCASE ASSY

NO	CODE		QTY
1	21265G04F000	BOLT	1
2	206202,01	DISK, oil separator	1
3	26102G03F000	O RING	1
4	26103G03F000	STOPPER	1
5	206200,101	CRANKCASE, LH	1
6	205101,02	GUIDE A, starting chain	1
7	205102,02	GUIDE B, starting chain	1
8	B01110601264	BOLT	1
9	B07000000600	WASHER	1
10	B01070602564	BOLT	1
11	B01070603564	BOLT	1
12	26105G03F910	CLAMP	1
13	26403G03F910	CLAMP	1
14	26134G03F000	HOSE breather	1
15	26130G03F000	OIL SEAL	1
16	206225,0344	STUD BOLT	2
17	26106G03F000	GASKET	1
18	26129G03F000	OIL SEAL	1
19	26123G03F000	DOWER PIN	3
20	B01070605064	BOLT	1
21	B12016620350	BEARING 6203	1
22	14222J01F000	O RING	1
23	B01070606564	BOLT	2
24	B12016600150	BEARING 6001Z	1
25	B01070606064	BOLT	3
26	30725G03F000	WASHER	1



RIGHT CRANKCASE ASSY

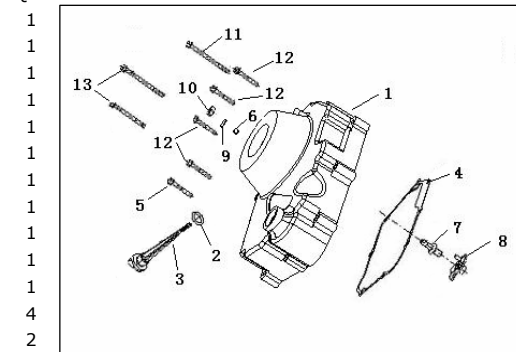
NO	CODE		QTY
1	201216,0154	STUD BOLT,cylinderA	2
2	26203G03F000	SLEEVE	1
3	26218G02F000	DOWER PIN	2
4	26300G03F000	OIL SET	1
5	B12016620350	BEARING 6203	1
6	26210G09F000	CRANKCASE,right	1
7	B12016620150	BEARING 6201	1
8	26208G03F000	DOWER PIN	2
9	26202G03F910	PLUG,drain	1
10	26204G03F000	WASHER	1
11	26201G03F000	GASKET,crankcase	1



COVER ASSY,RH

NO	CODE	
1	207300,051	COVER,clutch
2	14215J01F000	O-RING
3	14216F01F000	GAUGE,oil level
4	14204G03F000	GASKET,clutch cover
5	B010706038064	BOLT
6	26117J01F000	O-RING
7	14226G10F910	SCREW
8	212111,005	CAM RELEASE RH ASSM
9	34130G02F000	WASHER
10	B04000000800	NUT
11	B01070608064	BOLT
12	B01070604064	BOLT
13	B01070606564	BOLT

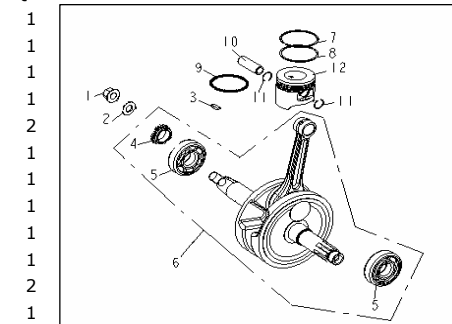
QTY



CRANKSHAFT CONROD & PISTON ASSY

NO	CODE	
1	15206G03F910	NUT
2	15108G03F920	WASHER
3	15101J01F000	KEY
4	27102G03F000	CHAIN WHEEL
5	B12016630453	ROLLING BEARING
6	208100,05	CRANKSHAFT ASSY
7	15103K02F940	RING,piston
8	15104K02F000	RING,piston
9	15300K02F000	OIL RING
10	15105G03FF10	PIN,piston
11	15106K02F000	CLIP
12	208300,1	PISTON

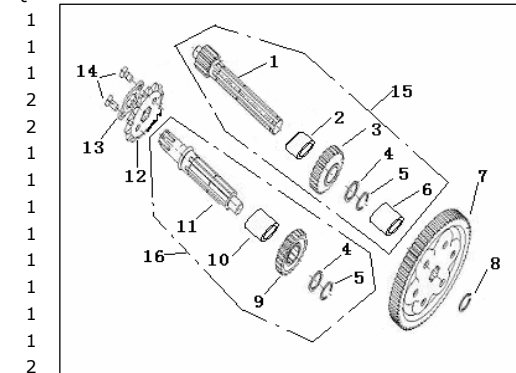
QTY



COUNTERSHAFT, DRIVE SHAFT ASSY

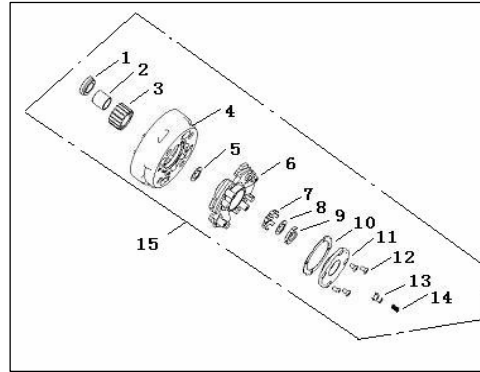
NO	CODE	
1	209200,01	GEAR
2	209309,005	BUSH
3	17203G08F000	GEAR, drive
4	17310G08F000	WASHER, spline
5	17219G08F000	CIRCLIP
6	209309,006	BUSH
7	17100G10F000	GEAR, drive
8	B08010001700	CIRCLIP
9	209301,004	GEAR, driven
10	209309,007	BUSH
11	209300,005	SHAFT,drive
12	17302G03F000	SPORCKET, engine
13	17301G03F910	WASHER, lock
14	B01030600864	BOLT
15	209101,05	SHAFT ASSY , drive
16	209102,05	SHAFT ASSY , driven

QTY



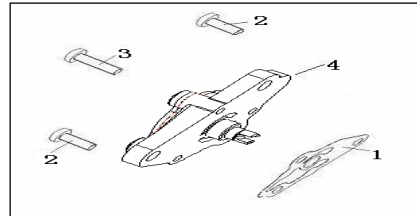
CLUTCH ASSY

NO	CODE		QTY
1	24602G03F000	BEARING	1
2	24603G03F000	SLEEVE	1
3	211200,05	GEAR,primary drive	1
4	211109,001	COVER ASSY	1
5	211309,001	WASHER	1
6	211103,001	PLATE ASSY,drive	1
7	24615G03F000	BOLT	1
8	24608G03F930	WASHER	1
9	24607G03F000	WASHER,lock	1
10	212309,001	MAT	1
11	212308,002	COVER,PORT	1
12	302010500800	BOLT	4
13	24605G03F000	TUBE	1
14	24606G03F000	SPRING	1
15	212100,05	CLUTCH ASSY	1



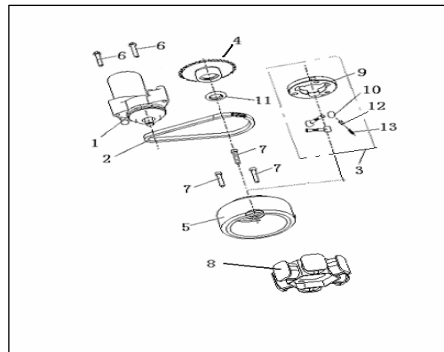
OIL PUMP ASSY

NO	CODE		QTY
1	19101G03F000	GASKET, oil pump	1
2	B02040601663	SCREW	2
3	B02040602263	SCREW	1
4	19000G03F000	OIL PUMP ASSY	1



ELECTRONIC STARTING ASSY

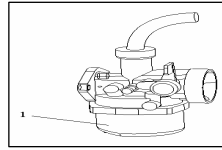
NO	CODE		QTY
1	218100,05	MOTOR ASSY , starting	1
2	34118G03F000	CHAIN	1
3	34110G03F000	CLUTCH SET , starter	1
4	217102,02	GEAR COMP , starter clutch	1
5	223101,102	ROTOR ASSY	1
6	B01070602564	BOLT	2
7	B02050601462	BOLT	3
8	223102,101	STOPPER ASSY	1
9	34111G03F000	SHIM , starter clutch hub	1
10	34114G03F000	ROLLER	3
11	34103G03F000	OIL SEAL	1
12	34113K02F000	PIECE , push	3
13	34117K02F000	SPRING	3



CARBURETOR ASSY

NO	CODE	
1	224100,061	CARBURETOR ASSY

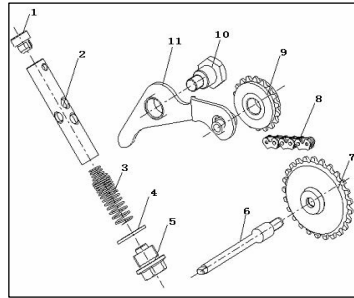
QTY
1



CAM CHAIN & TENSIONER

NO	CODE	
1	27311G03F000	CAP
2	27210G03F000	SHAFT
3	27309G03F000	SPRING
4	27310G03F000	WASHER
5	27308G03F000	PLUGE
6	27307G03F000	SHAFT
7	27220G03F000	CHAIN SPROCKET,
8	319301010823	CHAIN,
9	27320G03F000	SPROCKET,
10	30312G03F930	AXLE,chain tensioner
11	27230G03F000	ARM,chain tensioner

QTY
1
1
1
1
1
1
1
1
1
1
1



BACK COVER ASSY

NO	CODE	
1	207201,05	BACK COVER
2	B01070603064	BOLT

QTY
1
2

