

TX 50



TX 50 SUPERMOTARD

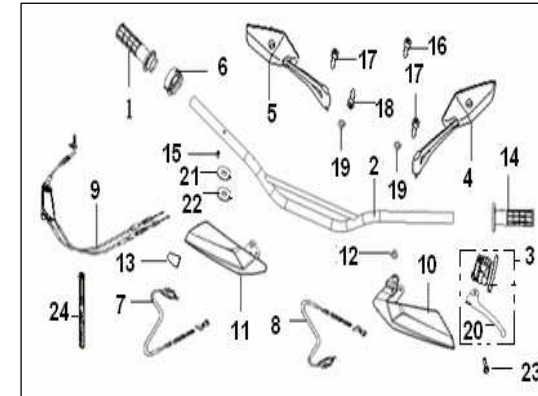
TX 50 ENDURO



TX 50

STEERING

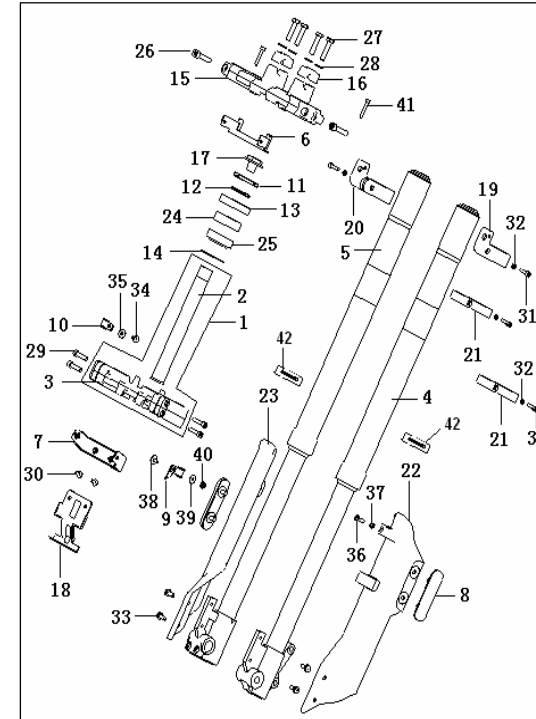
NO.	PART NO.	EN DESCRIPTION	QTY	NOTES
1	40210D010000	R GRIP ASSY	1	
2	40100D010020	HANDLE COMP	1	
3	40080D010000	LEVER ASSY ,L	1	
4	40450B430000	BACK MIRROR ASSY ,LEFT	1	
5	40480B430000	BACK MIRROR ASSY ,RIGHT	1	
6	40320D010000	CAP THROTTLE	1	
7	40400D010000	CLUTCH CABLE	1	
8	40350D010000	CHOKE CABLE	1	
9	40300D010010	THROTTLE CABLE	1	
10	65003D010000	COVER,HANDLE,LH	1	
11	65004D010000	COVER,HANDLE,RH	1	
12	65006D010000	SPACER	1	
13	40017D010000	JACKET,CLUTCH CABLE	1	
14	40001D010000	GRIP,LH	1	
15	B02000501025	SCREW M5×10MM	1	
16	B02050803065	SCREW M8×30MM	1	
17	40011D010000	COVER	2	
18	40186B380000	SCREW	1	
19	B07000000805	WASHER 8MM	2	
20	40084D010000	LEFT GRIP	1	
21	B07030000505	WASHER 5MM	1	
22	B07000000505	WASHER 5MM	1	
23	B01090601065	BOLT M6×10MM	1	
24	96001J00P000	BAND 7×150MM	1	



TX 50

FRONT FORK

NO.	PART NO.	EN DESCRIPTION	QTY	NOTES
1	43100D010000	UNDER BRACKET COMP.	1	
2	43101D010000	DIRECTION MAST	1	
3	43102D010000	UNDER BRACKET	1	
4	43200D040000	F.L. FORK ASSY (GOLDEN)	1	ON ROAD
	43200D040001	F.L. FORK ASSY (GOLDEN)	1	OFF ROAD
5	43300D040000	F.R. FORK ASSY. (GOLDEN)	1	ON ROAD
	43300D040001	F.R. FORK ASSY (GOLDEN)	1	OFF ROAD
6	65490D040000	METER SUPPORT COMP	1	
7	65550D040000	BLEED COVER INSTALL PLANK	1	
8	86300D010000	SIDE REFLECTOR	2	
9	43061D010000	CLIP	1	
10	43071D010000	CLIP	1	
11	43008D010000	NUT	1	
12	43022D010000	BALL RACE COVER II	1	
13	43005D010000	BALL RACE COVER I	1	
14	43018D010000	WASHER,DIRECTION MAST	1	
15	43011D010000	UPPER BRACKET	1	
16	43014D010000	CAP,HANDLE UPPER	2	
17	43049D010000	BOLT,STEERING STEM	1	
18	65541D010000	BLEED COVER SUPPORT	1	
19	81106D040000	F.L.TURN SIGNAL SEAT	1	
20	81306D040000	F.R.TURN SIGNAL SEAT	1	
21	43035D010000	BRAKE HOSE HOLDER	2	
22	43053D010000	COVER,F.L. FORK ASSY.	1	
23	43054D010000	COVER,F.R. FORK ASSY.	1	
24	B12016020500	BEARING 6205-2RS	1	
25	B12133020500	BEARING 30205	1	
26	B02050804065	SCREW M8×40MM	2	
27	B02050803565	SCREW M8×35MM	4	
28	B07030000805	WASHER 8MM	4	
29	B02050603064	SCREW M6×30MM	4	
30	B13010501205	SCREW M5×12MM	2	
31	B02050502565	SCREW M5×25MM	4	
32	B04020500015	NUT M5MM	4	
33	B13010601605	SCREW M6×16MM	4	
34	B01090501265	BOLT M5×12MM	1	
35	B07020000505	WASHER 5MM	1	
36	B02000502025	SCREW M5×20MM	1	
37	B04000500055	NUT M5MM	1	
38	B01090501265	BOLT M5×12MM	1	
39	B07020000505	WASHER 5MM	1	
40	B04170500065	NUT M5MM	1	
41	B02050503065	SCREW M5×30MM	2	
42	43260D010000	OIL SEAL	2	



TX 50

FRONT WHEEL

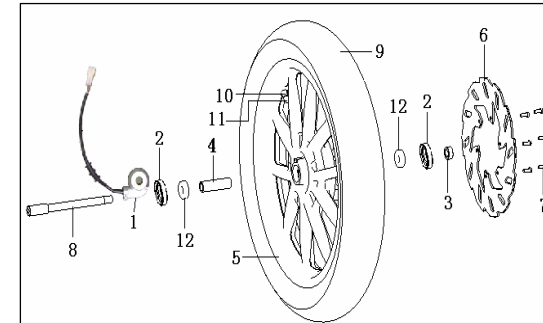
NO.	PART NO.	EN DESCRIPTION
1	44200D030001	SEAT ASSY. , GEAR
2	44300B910000	DUST SEAL ASSY
3	44005D010000	BUSH, FRONT WHEEL
4	44600D010000	SPACER,CENTER ASSY
5	44101D040000	RIM, FRONT WHEEL
6	45033D040000	FRONT BRAKE DISK
7	45036D010000	BOLT, BRAKE DISK
8	44004D010030	AXIL,FRONT WHEEL
9	B140505E1721	TUBE 100/80-17E4 75R-0004630
10	B1403Z201100	VALVE Z2-01-1
11	B1404Z2011A0	CAP, VALVE A
12	B12016020200	BEARING 6202-2RS

QTY

NOTES

1
2
1
1
1
1
6
1
1
1
1
2

SUPERMOTARD



FRONT WHEEL

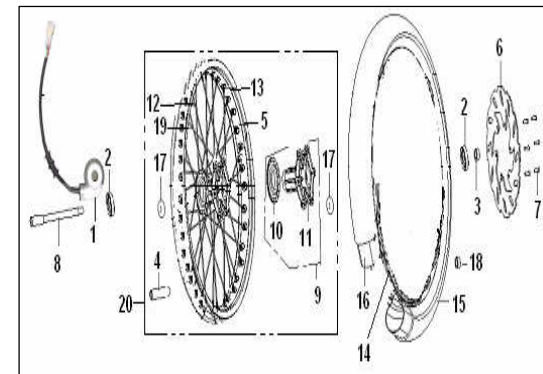
NO.	PART NO.	EN DESCRIPTION
1	44200D010000	SEAT ASSY.,GEAR
2	44300B910000	DUST SEAL ASSY
3	44005D010000	BUSH, FRONT WHEEL
4	44600D010000	SPACER,CENTER ASSY
5	44101D010000	RIM, FRONT WHEEL
6	45033D040001	FRONT BRAKE DISK
7	45036D010000	BOLT, BRAKE DISK
8	44004D010000	AXIL,FRONT WHEEL
9	44110D010000	FRONT WHEEL HUB ASSY
10	44112D010000	WHEEL HUB EMBED PIECE
11	44111D010000	FRONT WHEEL HUB
12	44011D010000	SPOKE
13	44014D010000	NIPPLE
14	44013D010000	PROTECTOR, TUBE
15	B14153002121	TIRE 3.00-21
16	B14023002100	INNER TUBE 3.00-21
17	B12016020200	BEARING 6202-2RS
18	B1404Z2011A0	CAP, VALVE A
19	44012D010000	SPOKE
20	44100D01001Z	RIM, FRONT WHEEL

QTY

NOTES

1
2
1
1
1
1
6
1
1
1
1
27
36
1
1
2
1
9
1

ENDURO

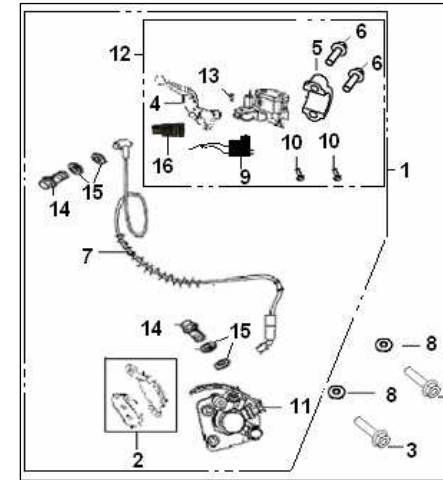


TX 50

DISK BRAKE

NO.	PART NO.	EN DESCRIPTION
1	45000D010000	DISK BRAKE ASSY.(Endure)
	45900D030001	DISK BRAKE ASSY.
2	45110D010000	BRAKE SHOE ASSY
3	45039B910000	BOLT M8×34MM
4	45022D010000	LEVER, DISK BRAKE
5	45023D010000	COVER
6	B02050602565	SCREW M6×25MM
7	45200D030000	BRAKE TUBE ASSY(Supermoto)
	45200D010000	BRAKE TUBE ASSY(Endure)
8	B07030000804	WASHER 8MM
9	45300D010000	BRAKE SWITCH ASSY
10	B02000201225	SCREW M2×12MM
11	45500D010000	BRAKE PUMP
12	45400D010000	MASTER CYLINDER ASSY.
13	45024D010000	BOLT
14	45037J000000	BOLT,
15	45029J000000	WASHER
16	45076D010000	BOLT

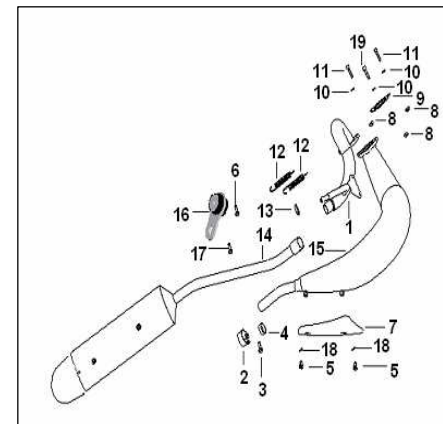
QTY	NOTES
1	OFF ROAD
1	ON ROAD
1	JOGO
2	
1	
1	
2	
1	ON ROAD
1	OFF ROAD
2	
2	
1	
1	
1	
2	
4	
1	



MUFFLER

NO.	PART NO.	EN DESCRIPTION
1	47500D010000	EXHAUST PIPE ASSY,EEC2
2	47150D010000	CLAMP,ASSY
3	B01090602565	BOLT M6×25MM
4	47035D010000	SPACE
5	B02000601025	SCREW M6×10MM
6	B01090602065	BOLT M6×20MM
7	47009D010000	COVER,PROTECTOR
8	B04070600055	NUT M6MM
9	47121D010000	GASKET, MUFFLER
10	B07030000605	WASHER 6MM
11	B02050602565	SCREW M6×25MM
12	47041D010000	SPRING
13	47811D010000	GASKET
14	48200D040001	MUFFLER COMP,BACK
15	47200D010000	MUFFLER COMP,FRONT,EEC2
16	47600D050000	RUBBER CUSHION ASSY
17	B01090601265	BOLT M6×12MM
18	B07030000605	WASHER 6MM
19	08011B920005	SCREW

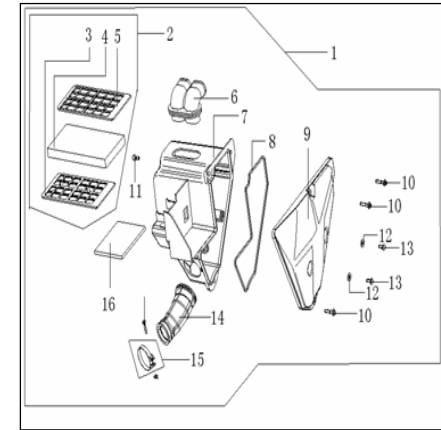
QTY	NOTES
1	
1	
1	
1	
2	
1	
1	
3	
1	
3	
2	
2	
1	
1	
1	
1	
1	
2	
1	



TX 50

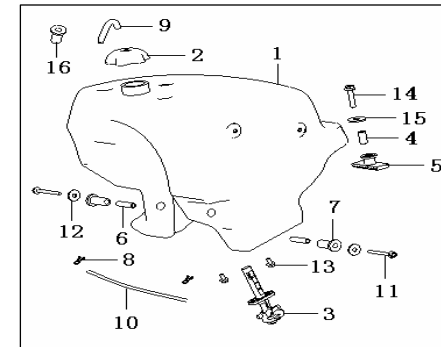
AIR CLEANER

NO.	PART NO.	EN DESCRIPTION	QTY	NOTES
1	49000D010000	AIR CLEANER ASSY.,EEC2	1	
2	49200D010000	AIR ELEMENT ASSY.	1	
3	49204D010000	FILTRATE1	1	
4	49202D010000	SPONGE AIR ELEMENT	1	
5	49207D010000	FILTRATE2	1	
6	49002D010000	GUIDE PIPE	1	
7	49100D010000	CASE, AIR CLEANER ASSY	1	
8	49013D010000	SEAL GASKET	1	
9	49001D010000	COVER, AIR CLEANER	1	
10	B13060502505	SCREW M5×25MM	3	
11	B02000501625	SCREW M5×16MM	1	
12	49022D010000	GROMMET	2	
13	B13060501205	SCREW M5×12MM	2	
14	49005D010000	CONNECTTING PIPE	1	
15	49350G120000	CLIP	1	
16	49003D010000	SPONGE	1	



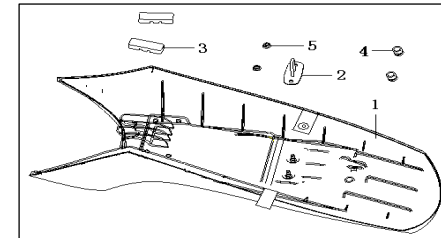
FUEL TANK

NO.	PART NO.	EN DESCRIPTION	QTY	NOTES
1	50100D040001	FUEL TANK ASSY	1	
2	50200D040001	CAP,FULE TANK	1	
3	50300D010000	STRAINERCOMPASSY,FUEL	1	
4	50025D010000	GASKET II	1	
5	50005D010000	BACK FIXING MAT,FUEL	1	
6	50027D010000	GASKET I	2	
7	50026D010000	FRONT FIXING MAT,FUEL	2	
8	50307J000000	CLAMP	2	
9	B16010520301	PIPE Ø5×Φ9×30	1	
10	B16010521901	HOSE, FUEL Ø5×Φ9×190	1	
11	B01090605565	BOLT M6×55MM	2	
12	B07090000605	WASHER 6MM	2	
13	B01090601265	BOLT M6×12MM	2	
14	B01090804065	BOLT M8×40MM	1	
15	B07090000805	WASHER 8MM	1	
16	50400W070000	UNILATERALISM VALVE ASSY	1	



SEAT

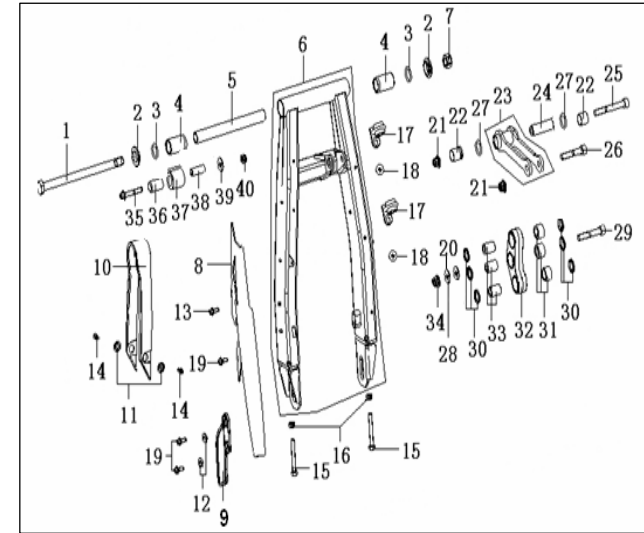
NO.	PART NO.	EN DESCRIPTION	QTY	NOTES
	51100D040001	SEAT ASSY BLACK / ORANGE	1	LAR, BRA
	51100D040011	SEAT ASSY RED / BLACK	1	PRT
2	51150D010000	CATCH COMP LOCK ASSY	1	
3	51103J000000	RUBBER CUSHION	2	
4	51104K010000	RUBBER CUSHION	2	
5	B04070600055	NUT M6MM	2	



TX 50

REAR SWINGING ARM

NO.	PART NO.	EN DESCRIPTION	QTY	NOTES
1	53001D010000	SHAFT	1	
2	53017D010010	REAR SWINGING ARM SIDE COVER	2	
3	B190102000C0	O -SEAL RING 20×3.55	2	
4	53006D010010	SPACER	2	
5	53005D010000	INSIDE COLLAR	1	
6	53100D04HN00	REAR SWINGING BODY SILVER GRAY HN	1	
7	B04171415054	NUT M14×1.5MM	1	
8	53053D040000	TOP PROTECTOR COVER CHAIN	1	
9	53054D010000	BELOW PROTECTOR COVER CHAIN	1	
10	53004D010000	CHAIN PROTECTOR BOARD	1	
11	53056D010010	SPACER 2	2	
12	53055D010000	SPACER 1	2	
13	B01090602065	BOLT M6×20MM	1	
14	B02000501225	SCREW M5×12MM	2	
15	B01010806025	BOLT M8×60MM	2	
16	B04000800055	NUT M8MM	2	
17	53009N050000	BRAKE HOSE HOLDER	2	
18	B02010601023	SCREW M6×10MM	2	
19	B01090601665	BOLT M6×16MM	3	
20	B07000001005	SPRING WASHER 10MM	1	
21	B04171012555	NUT M10×1.25MM	2	
22	53301D010000	INSIDE BUSH	2	
23	53310D040000	ARM JOIN COMP	1	ON ROAD
	53310D040001	ARM JOIN COMP	1	OFF ROAD
24	53302D010000	COLLAR	1	
25	B02551008585	SCREW M10×1.25×85MM	1	
26	B02551005585	SCREW M10×1.25×55MM	1	
27	53303D010000	O-SEAL RING 18×2.5	2	
28	B07030001005	WASHER 10MM	1	
29	B02551006085	SCREW M10×1.25×60MM	1	
30	53250D010000	DUSTPROOF COVER	6	
31	B1210K161600	BEARING NK16/16	3	
32	53241D040000	REAR ABSORBER SWINGING ARM	1	
33	53242D010000	BUSH	3	
34	B04171012555	NUT M10×1.25MM	1	
35	B01090805065	BOLT M8×50MM	1	
36	53019D010000	BUSH	1	
37	53018D010000	CHAIN ADJUST WHEEL	1	
38	53021D010000	BUSH	1	
39	B07020000805	WASHER 8MM	1	
40	B04070800055	NUT M8MM	1	

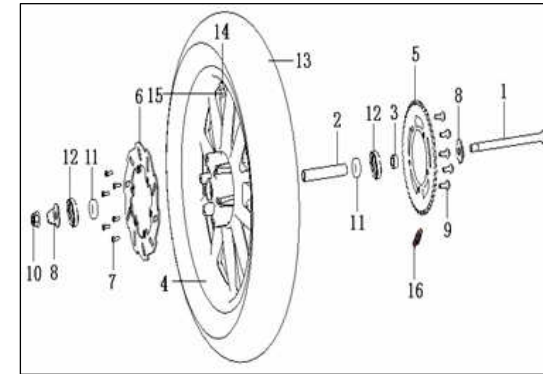


TX 50

REAR WHEEL

NO.	PART NO.	EN DESCRIPTION	QTY
1	54004D010000	AXLE, REAR WHEEL	1
2	54550D030000	SPACER,CENTER ASSY	1
3	54016D010000	SPACER, RR. WHEEL,L.	1
4	54101D040000	RIM,REAR WHEEL alloy	1
5	60002D010000	SPROKET,CHAIN	1
6	55033D040000	REAR BRAKE DISK	1
7	45036D010000	BOLT, BRAKE DISK	6
8	54032D010000	REAR PRESS BOARD	2
9	60015D010000	BOLT,SPROKET	5
10	B04171415054	NUT M14×1.5MM	1
11	B12016020200	BEARING 6202-2RS	2
12	44300B910000	DUST SEAL ASSY	2
13	B140508E1721	TUBE 130/80-17	1
14	B1403Z201100	VALVE Z2-01-1	1
15	B1404Z2011A0	CAP, VALVE A	1
16	B1502V1128B0	DRIVE CHAIN 420DX-1×128	1

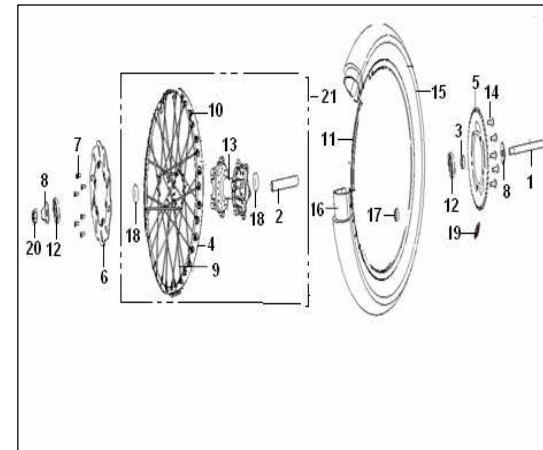
SUPERMOTARD



REAR WHEEL

NO.	PART NO.	EN DESCRIPTION	QTY
1	54004D010000	AXLE, REAR WHEEL	1
2	54006D030000	SPACER,CENTER	1
3	54016D010000	SPACER, RR. WHEEL,L.	1
4	54101D010000	RIM,REAR WHEEL	1
5	60002D010000	SPROKET,CHAIN	1
6	55033D040000	REAR BRAKE DISK	1
7	45036D010000	BOLT, BRAKE DISK	6
8	54032D010000	REAR PRESS BOARD	2
9	54011D010001	SPOKE OUTSIDE (OD 3.8mm)	18
9	54012D010001	SPOKE INSIDE (OD 3.8mm)	18
10	54014D010001	NIPPLE(3.8mm)	36
11	54013D010000	PROTECTOR,TUBE	1
12	44300B910000	DUST SEAL ASSY	2
13	54102D010000	REAR WHEEL HUB	1
14	60015D010000	BOLT,SPROKET	5
15	B14154101821	TIRE 4.10-18	1
16	B14024101800	INNER TUBE 4.10-18	1
17	B1404Z2011A0	CAP, VALVE A	1
18	B12016020200	BEARING 6202-2RS	2
19	B1502V1128B0	DRIVE CHAIN 420DX-1×128	1
20	B04171415054	NUT M14×1.5MM	1
21	54100D01002Z	RIM,REAR WHEEL	1

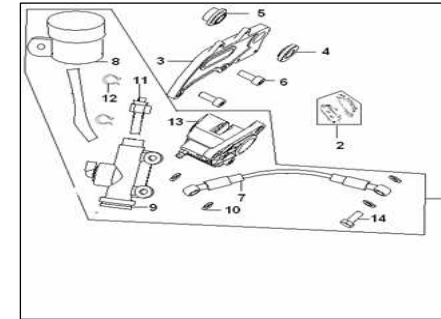
ENDURO



TX 50

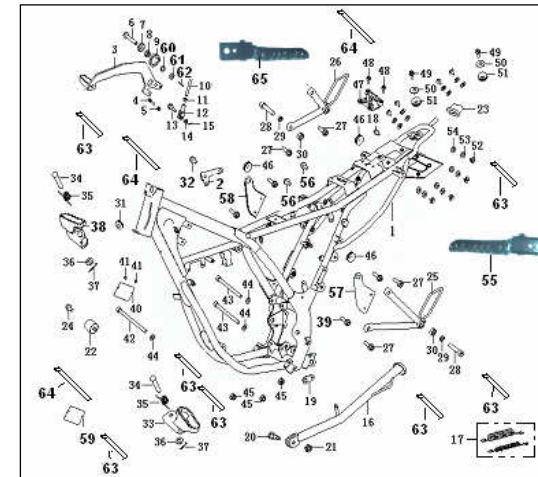
REAR DISK BRAKE

NO.	PART NO.	EN DESCRIPTION	QTY	NOTES
1	55000D010000	BACK DISK BRAKE	1	
2	55110D010000	BRAKE SHOE ASSY	1	JOGO
3	55025D010000	BRACKET	1	
4	55049D010000	BUSH I	1	
5	55095D010000	BUSH II	1	
6	B02050802065	SCREW M8×20MM	2	
7	55200D010000	HOSE ASSY,BRAKE	1	
8	55140D010000	RESERVOIR , BRAKE FLUID	1	
9	55400D010000	CYLINDER ASSY,MASTER	1	
10	55029J000000	WASHER	4	
11	55300D010000	PRESSURE SENDER ASSY	1	
12	55067D090000	CLIP	2	
13	55600D010000	CALIPER ASSY,BRAKE	1	
14	45037J000000	BANJO BOLT	2	



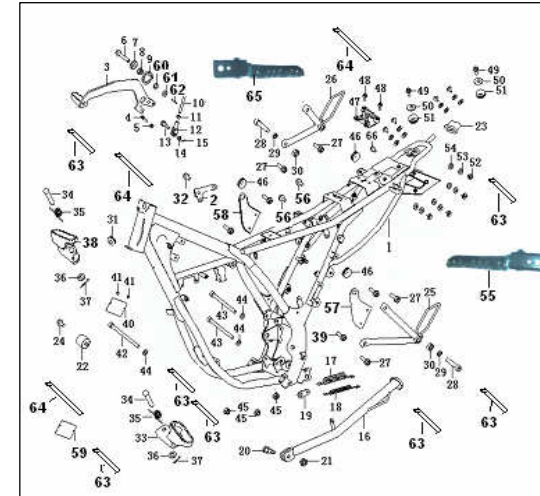
FRAME

NO.	PART NO.	EN DESCRIPTION	QTY	NOTES
1	57100D040000	FRAME JOINTING ASSY	1	
2	57173D010000	ENHANCE BOARD,VALVE	1	
3	40710D010000	PEDAL JOINTING ASSY,BRAKE	1	
4	B01090603065	BOLT M6×30MM	1	
5	B04000600055	NUT M6MM	1	
6	40718D010000	BOLT	1	
7	40705D010000	SPACER	1	
8	B04080800055	NUT M8MM	1	
9	40709D010000	SPRING	1	
10	40715D010000	PULL ROD	1	
11	B04000600055	NUT M6MM	1	
12	40716D010000	PULL HANDLE	1	
13	40717D010000	BOLT	1	
14	B04000600055	NUT M6MM	1	
15	B090002018A3	SPLIT PIN 2×18MM	1	
16	58700D040000	SIDE STAND	1	ON ROAD
16	58700D030000	SIDE STAND	1	OFF ROAD
17	57010D010000	SPRING ASSY , SIDE STAND	1	
18	B13010601605	SCREW M6×16MM	1	
19	57006D010000	SPRING PLATE	1	
20	57005D010000	BOLT	1	
21	B04011012555	NUT M10×1.25MM	1	
22	58920D010000	RUBBER MAT COMP	1	
23	08334J040000	CUSHION	1	
24	B01090600865	BOLT M6×8MM	1	
25	58270D010000	CANAL PEDAL COMP REAR LH	1	
26	58290D010000	CANAL PEDAL COMP REAR RH	1	
27	B01090802565	BOLT M8×25MM	4	
28	B02051004565	SCREW M10×45MM	2	
29	B07000001005	WASHER 10MM	2	
30	B04051000065	NUT M10MM	2	
31	65705J000000	WASHER	1	



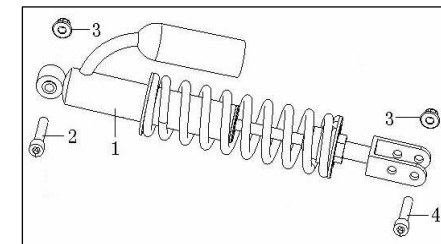
TX 50

32	B01090601265	BOLT M6×12MM	1
33	58250D010000	PANEL FLOOR JOINTING COMP LH	1
34	57024D010000	PIN	2
35	58202D010000	SPRING	2
36	B07030000805	WASHER 8MM	2
37	B090002018A3	SPLIT PIN 2×18MM	2
38	58230D010000	PANEL FLOOR JOINTING COMP RH	1
39	B01090501065	BOLT M5×10MM	4
40	57001D040001	PLATE,VIN	1
41	B10000300600	RIVET 3×6MM	2
42	B02050812065	SCREW M8×120MM	1
43	B02050810065	SCREW M8×100MM	2
44	B07030000805	WASHER 8MM	3
45	B04170800055	NUT M8MM	3
46	65618J000000	CUSHION	2
47	88500D010000	LOCK	1
48	B01090601265	BOLT M6×12MM	2
49	B01090801665	BOLT M8×16MM	2
50	57206D010000	BUSH,MUFFER	2
51	57209D010000	CUSHION,MUFFER	2
52	57032D010000	CUSHION	8
53	B07030000805	WASHER 8MM	8
54	B13060501205	SCREW M5×12MM	8
55	58260D010000	PEDAL COMP REAR LH	1
56	B01090601665	BOLT M6×16MM	2
57	57964D040000	FIXING BOARD,FRAME COVER,L,F	1
58	57965D040000	FIXING BOARD,FRAME COVER,R,F	1
59	57002D040000	PLATE,VIN	1
60	B07000000805	WASHER 8MM	1
61	B07030000805	WASHER 8MM	1
62	B090002018A3	SPLIT PIN 2×18MM	1
63	96001J000000	BAND7×150MM	7
64	96002J000000	BAND7×200MM	3
65	58280D010000	PEDAL COMP REAR RH	1



REAR ABSORBER

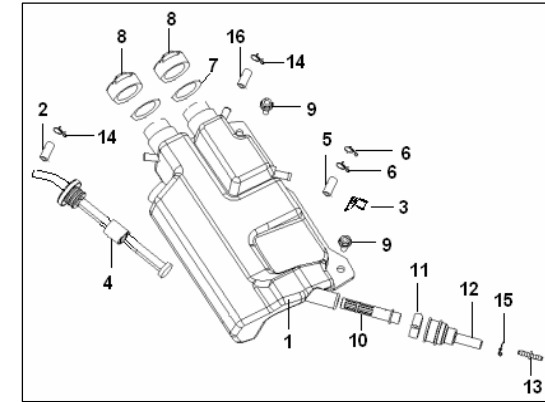
NO.	PART NO.	EN DESCRIPTION	QTY	NOTES
1	63800D040001	RR. ABSORBER COMP	1	
2	B02551005065	BOLT M10×1.25×50MM	1	
3	B04171012555	NUT M10×1.25MM	2	
4	B02551005065	BOLT M10×1.25×50MM	1	



TX 50

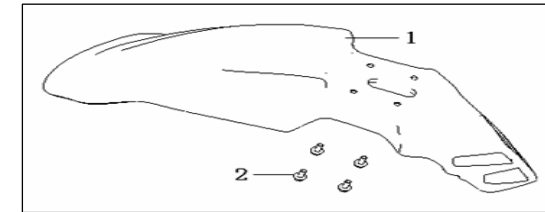
OIL TANK

NO.	PART NO.	EN DESCRIPTION	QTY	NOTES
1	64001D010000	OIL TANK black	1	
2	B16010724001	PIPE $\Phi 7 \times \Phi 11 \times 400$ MM	1	
3	43061D010000	CLIP	1	
4	64100D010000	OIL SENSOR ASSY	1	
5	20603D010000	HOSE	1	
6	342342140020	CLIP 10-16MM	2	
7	64092D010000	GASKET WATER TANK CAP	2	
8	64031D010000	WATER TANK CAP	2	
9	B01090601665	BOLT M6×16MM	2	
10	64050D010000	FILTER ASSY	1	
11	64060D010000	CLIP ASSY	1	
12	64004D010000	OIL TANK PIPE	1	
13	64008D010000	CONNECTOR	1	
14	B17010100000	CLIP, STEEL WIRE 10MM	2	
15	B17010080000	CLIP, STEEL WIRE 8MM	1	
16	B16010722501	PIPE $\Phi 7 \times \Phi 11 \times 250$ MM	1	



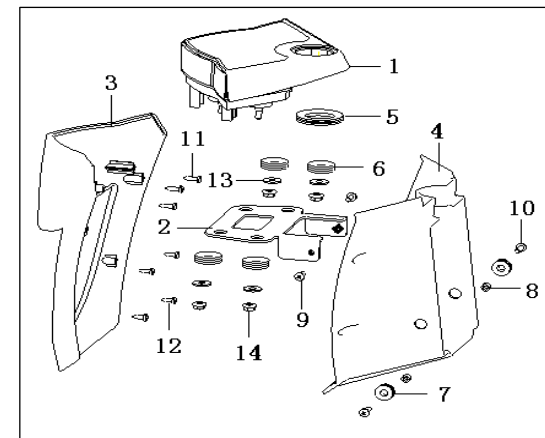
FRONT FENDER

NO.	PART NO.	EN DESCRIPTION	QTY	NOTES
1	65101D04BA00	FRONT FENDER black	1	TODOS OS MODELOS
2	B01090601665	BOLT M6×16MM	4	



COWLING

NO.	PART NO.	EN DESCRIPTION	QTY	NOTES
1	70000D040003	SPEEDOMETER ASSY.	1	ON ROAD
	70000D040004	SPEEDOMETER ASSY.	1	OFF ROAD
2	65530D040000	BRACKET, SPEEDOMETER	1	
3	65501D040020	FRONT COWLING	1	LAR
	65501D040030	FRONT COWLING	1	BRA
	65501D040040	FRONT COWLING	1	PRT
4	65483D040000	REAR COWLING	1	
5	70015D040000	CUSHION, SPEEDOMETER	1	
6	65618J000000	CUSHION, FRAME COVER	4	
7	65617J000000	CUSHION, FRAME COVER	2	
8	65517D040000	BUSH, REAR COWLING	2	
9	B13060501205	SCREW M5×12MM	2	
10	B13060501605	SCREW M5×16MM	2	
11	B05004201605	SCREW ST4.2×16MM	3	
12	B05004201305	SCREW ST4.2×13MM	4	
13	B07020000605	WASHER 6 MM	4	
14	B04070600055	NUT M6 MM	4	



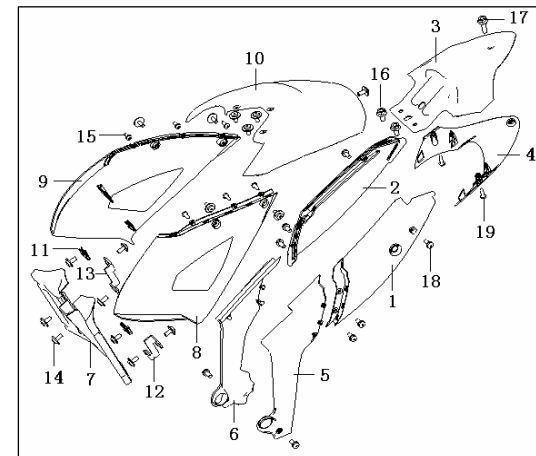
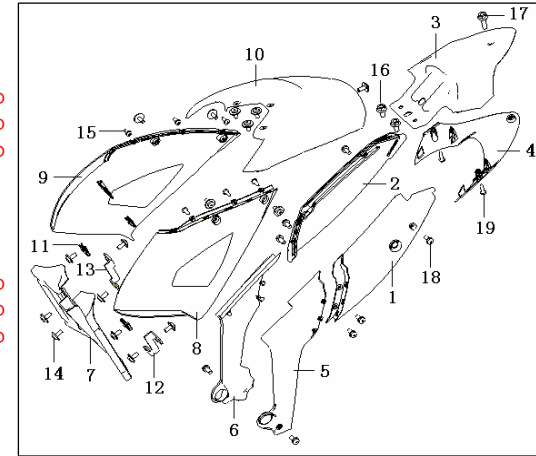
TX 50

FRAME COVER

NO.	PART NO.	EN DESCRIPTION
1	65601D04BA00	FRAME COVER , L
	65601D04003Z	FRAME COVER , L
	65601D04004Z	FRAME COVER , L
	65601D04005Z	FRAME COVER , L
	65601D04006Z	FRAME COVER , L
	65601D04007Z	FRAME COVER , L
	65601D04008Z	FRAME COVER , L
2	65602D04BA00	FRAME COVER , R
	65602D04003Z	FRAME COVER , R
	65602D04004Z	FRAME COVER , R
	65602D04005Z	FRAME COVER , R
	65602D04006Z	FRAME COVER , R
	65602D04007Z	FRAME COVER , R
	65602D04008Z	FRAME COVER , R
3	65603D040000	FRAME COVER,U,R
4	65604D040000	FRAME COVER,BE,R
5	65632D04HN00	FRAME COVER , L , F
6	65633D04HN00	FRAME COVER , R , F
7	65502D010000	BELOW COWLING
8	65671D04M900	FRAME COVER , L , OIL BOX
	65671D04WF00	FRAME COVER , L , OIL BOX
	65671D04BH00	FRAME COVER , L , OIL BOX
	65671D04003Z	FRAME COVER , L , OIL BOX
	65671D04004Z	FRAME COVER , L , OIL BOX
	65671D04005Z	FRAME COVER , L , OIL BOX
9	65672D04M900	FRAME COVER , R , OIL BOX
	65672D04WF00	FRAME COVER , R , OIL BOX
	65672D04BH00	FRAME COVER , R , OIL BOX
	65672D04003Z	FRAME COVER , R , OIL BOX
	65672D04004Z	FRAME COVER , R , OIL BOX
	65672D04005Z	FRAME COVER , R , OIL BOX
10	65673D04M900	FRAME COVER , U , OIL BOX
	65673D04WF00	FRAME COVER , U , OIL BOX
	65673D04BH00	FRAME COVER , U , OIL BOX
	65673D04003Z	FRAME COVER , U , OIL BOX
	65673D04004Z	FRAME COVER , U , OIL BOX
	65673D04005Z	FRAME COVER , U , OIL BOX
11	08051T020050	NUT
12	65504D040000	BRACKET,FRAME COVER,L,OIL BOX
13	65505D040000	BRACKET,FRAME COVER,R,OIL BOX
14	B13060501005	SCREW M5×10MM
15	B05004201305	SCREW ST4.2×13MM
16	B01090801665	BOLT M8×16MM
17	B01090602565	BOLT M6×25MM
18	B13010501205	SCREW M5×12MM
19	B05004201305	SCREW ST4.2×13MM

QTY NOTES

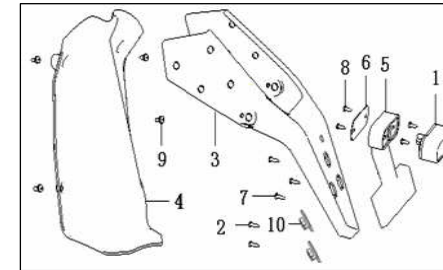
1	TODOS OS MODELOS
1	LAR C/ AUTOCOLANTE ON ROAD
1	BRA C/ AUTOCOLANTE ON ROAD
1	PRT C/ AUTOCOLANTE ON ROAD
1	LAR C/ AUTOCOLANTE OFF ROAD
1	BRA C/ AUTOCOLANTE OFF ROAD
1	PRT C/ AUTOCOLANTE OFF ROAD
1	TODOS OS MODELOS
1	LAR C/ AUTOCOLANTE ON ROAD
1	BRA C/ AUTOCOLANTE ON ROAD
1	PRT C/ AUTOCOLANTE ON ROAD
1	LAR C/ AUTOCOLANTE OFF ROAD
1	BRA C/ AUTOCOLANTE OFF ROAD
1	PRT C/ AUTOCOLANTE OFF ROAD
1	LAR
1	BRA
1	PRT
1	LAR C/ AUTOCOLANTE
1	BRA C/ AUTOCOLANTE
1	PRT C/ AUTOCOLANTE
1	LAR
1	BRA
1	PRT
1	LAR C/ AUTOCOLANTE
1	BRA C/ AUTOCOLANTE
1	PRT C/ AUTOCOLANTE
1	LAR
1	BRA
1	PRT
1	LAR C/ AUTOCOLANTE
1	BRA C/ AUTOCOLANTE
1	PRT C/ AUTOCOLANTE
14	
8	
2	
1	
8	
2	



TX 50

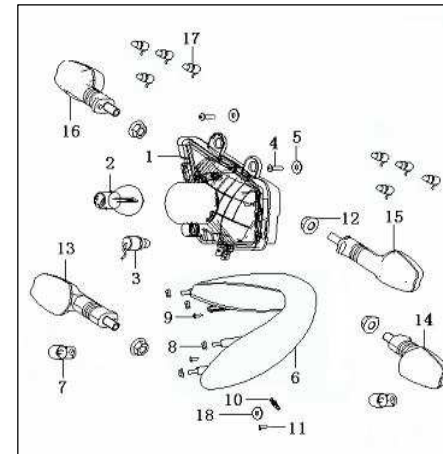
REAR FENDER

NO.	PART NO.	EN DESCRIPTION	QTY	NOTES
1	82900D040000	LAMP ,LICENSE PLATE	1	
2	B05004001205	SCREW ST4.0×12MM	2	
3	65701D040000	REAR FENDER	1	
4	65761D010000	FENDER,REAR	1	
5	65716D040000	FIXING BOARD , LAMP	1	
6	65714D040000	BLOCK BOARD , LAMP	1	
7	B05004201305	SCREW ST4.2×13MM	3	
8	B05004201305	SCREW ST4.2×13MM	4	
9	B13010501205	SCREW M5×12MM	4	
10	65708D040000	HOLDER	2	



ELECTRIC I

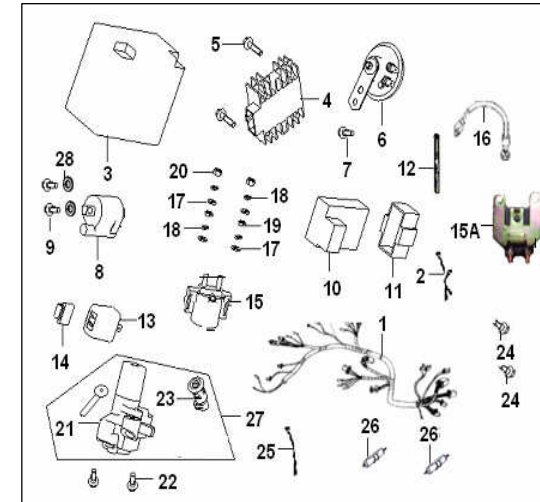
NO.	PART NO.	EN DESCRIPTION	QTY	NOTES
1	80000D040000	HEAD LAMP ASSY.	1	
2	B24010520000	BULB 12V/35W	1	
3	B24013120000	BULB 12V/5W	1	
4	B05004201605	SCREW ST4.2×16MM	2	
5	B07020000505	WASHER 5MM	2	
6	82000D040000	TAIL LAMP ASSY.	1	
7	B24012420000	BULB, 12V/10W	2	
8	B04070600055	NUT M6MM	4	
9	B05004201305	SCREW ST4.2×13MM	2	
10	08051T020050	NUT	1	
11	B05004001205	SCREW ST4×12MM	1	
12	B04071000053	NUT M10MM	4	
13	81100D010000	LAMP ASSY., FR. TURN SIGNAL, L.	1	
14	81300D010000	LAMP ASSY., FR. TURN SIGNAL, R.	1	
15	81500D040000	LAMP ASSY., RR. TURN SIGNAL, L.	1	
16	81700D040000	LAMP ASSY., RR. TURN SIGNAL, R.	1	
17	B24014620000	BULB W2.3W	8	
18	B07020000405	WASHER 4MM	1	



TX 50

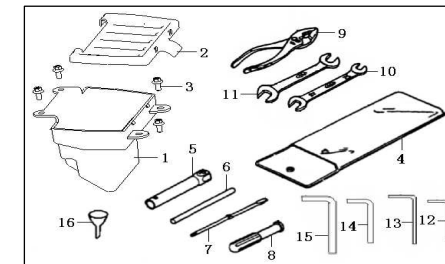
ELECTRIC II

NO.	PART NO.	EN DESCRIPTION	QTY	NOTES
1	92000D040004	HARNESS, WIRING	1	
2	96900D010000	WIRE, EARTH	1	
3	96100B030000	BATTERY	1	YT4L-BS
4	341062140010	RECTIFIER	1	
5	B01090602565	BOLT M6×25MM	2	
6	95100B410000	HORN ASSY.	1	
7	B01090601265	BOLT M6×12MM	1	
8	341002140010	COIL ASSY.,IGNITION	1	
9	B01090501665	BOLT M5×16MM	2	
10	299051170002	C.D.I(New type)	1	
11	96007K010000	COVER,C.D.I	1	
12	96003D010000	BAND 3×80MM	2	
13	96400B030000	RELAY, TURN SIGNAL	1	
14	96401B030000	COVER,RELAY, TURN SIGNAL	1	
15	94100J000002	RELAY, KICK STARTER	1	
16	92200J070000	ELECTRIC CABLE	1	
17	B07030000603	WASHER 6MM	4	
18	B07000000603	WASHER 6MM	4	
19	B04020600013	NUT M6MM	2	
20	B04000600053	NUT M6MM	2	
21	88100D010000	LOCK ASSY.	1	
22	B02050602065	SCREW M6×20MM	2	
23	88801B070000	LOCK ASSY.	1	
24	B01090601065	BOLT M6×10	2	
25	58900D040000	CABLE ASSY,SEAT	1	
26	96830J000000	FUSE	2	
27	88000D010000	LOCK ASSY.	1	
28	B07030000565	WASHER 5MM	2	



TOOL KIT

NO.	PART NO.	EN DESCRIPTION	QTY	NOTES
1	02131D010000	TOOL KIT	1	
2	02132D010000	COVER, TOOL KIT	1	
3	B01090601265	BOLT M6×12MM	4	
4	02110B920000	TOOL BAG	1	
5	02102B910000	SOCKET, SPARK PLUG	1	
6	02101B910000	SPANNER, SPARK PLUG	1	
7	02103B910000	SCREW DRIVER, DOUBLE-HEADED	1	
8	02104B910000	HANDLE	1	
9	02112B920000	PLIERS	1	
10	B20011001203	DOUBLE-ENDED SPANNER10-12MM	1	
11	B20011301603	DOUBLE-ENDED SPANNER13-16MM	1	
12	B20020400003	HEXAGON RING WRENCH 4MM	1	
13	B20020500003	HEXAGON RING WRENCH 5MM	1	
14	B20020600003	HEXAGON RING WRENCH 6MM	1	
15	B20020800003	HEXAGON RING WRENCH 8MM	1	
16	02114B910000	FILTER, OIL TANK	1	



TX 50

F25.1 STICKER

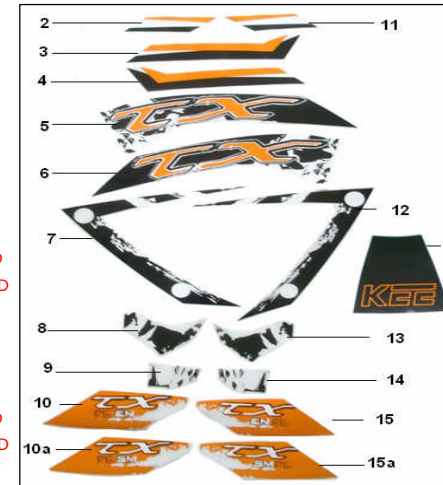
NO.	PART NO.	EN DESCRIPTION	QTY
1	05521D04M902	STICKER,FUEL TANK UP SIDE COVER	1
2	05523D04M902	STICKER 1,FUEL TANK UP SIDE COVER LH.	1
3	05525D04M902	STICKER 2,FUEL TANK UP SIDE COVER LH.	1
4	05526D04M902	STICKER 2,FUEL TANK UP SIDE COVER RH.	1
5	05511D04M902	STICKER 1,FUEL TANK SIDE COVER LH	1
6	05512D04M902	STICKER 1,FUEL TANK SIDE COVER RH	1
7	05513D04M902	STICKER 2,FUEL TANK SIDE COVER LH	1
8	05515D04M902	STICKER 3,FUEL TANK SIDE COVER LH	1
9	05517D04M902	STICKER 4,FUEL TANK SIDE COVER LH	1
10A	05519D04M902	STICKER,SIDE COVER LH	1
10	05519D04M903	STICKER,SIDE COVER LH	1
11	05524D04M902	STICKER 1,FUEL TANK UP SIDE COVER RH.	1
12	05514D04M902	STICKER 2,FUEL TANK SIDE COVER RH	1
13	05516D04M902	STICKER 3,FUEL TANK SIDE COVER RH	1
14	05518D04M902	STICKER 4,FUEL TANK SIDE COVER RH	1
15A	05520D04M902	STICKER,SIDE COVER RH	1
15	05520D04M903	STICKER,SIDE COVER RH	1

NOTES

LAR

ON ROAD
OFF ROAD

ON ROAD
OFF ROAD



F25.2 STICKER

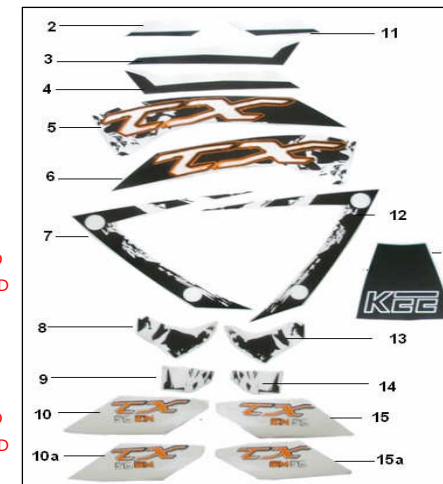
NO.	PART NO.	EN DESCRIPTION	QTY
1	05521D04WF02	STICKER,FUEL TANK UP SIDE COVER	1
2	05523D04WF02	STICKER 1,FUEL TANK UP SIDE COVER LH.	1
3	05525D04WF02	STICKER 2,FUEL TANK UP SIDE COVER LH.	1
4	05526D04WF02	STICKER 2,FUEL TANK UP SIDE COVER RH.	1
5	05511D04WF02	STICKER 1,FUEL TANK SIDE COVER LH	1
6	05512D04WF02	STICKER 1,FUEL TANK SIDE COVER RH	1
7	05513D04M902	STICKER 2,FUEL TANK SIDE COVER LH	1
8	05515D04M902	STICKER 3,FUEL TANK SIDE COVER LH	1
9	05517D04M902	STICKER 4,FUEL TANK SIDE COVER LH	1
10A	05519D04WF02	STICKER,SIDE COVER LH	1
10	05519D04WF03	STICKER,SIDE COVER LH	1
11	05524D04WF02	STICKER 1,FUEL TANK UP SIDE COVER RH.	1
12	05514D04M902	STICKER 2,FUEL TANK SIDE COVER RH	1
13	05516D04M902	STICKER 3,FUEL TANK SIDE COVER RH	1
14	05518D04M902	STICKER 4,FUEL TANK SIDE COVER RH	1
15A	05520D04WF02	STICKER,SIDE COVER RH	1
15	05520D04WF03	STICKER,SIDE COVER RH	1

NOTES

BRA

ON ROAD
OFF ROAD

ON ROAD
OFF ROAD



TX 50

F25.3 STICKER

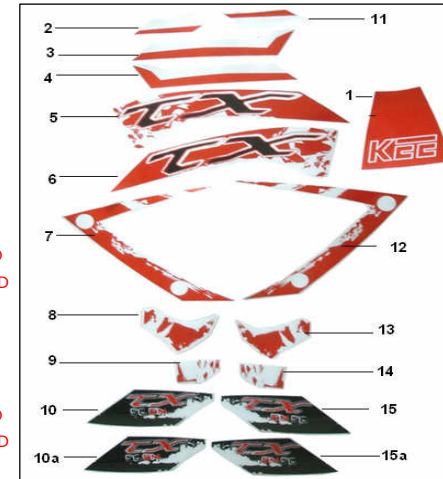
NO.	PART NO.	EN DESCRIPTION	QTY	NOTES
1	05521D04BH02	STICKER,FUEL TANK UP SIDE COVER	1	
2	05523D04BH02	STICKER 1,FUEL TANK UP SIDE COVER LH.	1	
3	05525D04BH02	STICKER 2,FUEL TANK UP SIDE COVER LH.	1	
4	05526D04BH02	STICKER 2,FUEL TANK UP SIDE COVER RH.	1	
5	05511D04BH02	STICKER 1,FUEL TANK SIDE COVER LH	1	
6	05512D04BH02	STICKER 1,FUEL TANK SIDE COVER RH	1	
7	05513D04BH02	STICKER 2,FUEL TANK SIDE COVER LH	1	
8	05515D04BH02	STICKER 3,FUEL TANK SIDE COVER LH	1	
9	05517D04BH02	STICKER 4,FUEL TANK SIDE COVER LH	1	
10A	05519D04BH02	STICKER,SIDE COVER LH	1	
10	05519D04BH03	STICKER,SIDE COVER LH	1	
11	05524D04BH02	STICKER 1,FUEL TANK UP SIDE COVER RH.	1	
12	05514D04BH02	STICKER 2,FUEL TANK SIDE COVER RH	1	
13	05516D04BH02	STICKER 3,FUEL TANK SIDE COVER RH	1	
14	05518D04BH02	STICKER 4,FUEL TANK SIDE COVER RH	1	
15A	05520D04BH02	STICKER,SIDE COVER RH	1	
15	05520D04BH03	STICKER,SIDE COVER RH	1	

NOTES

PRT

ON ROAD
OFF ROAD

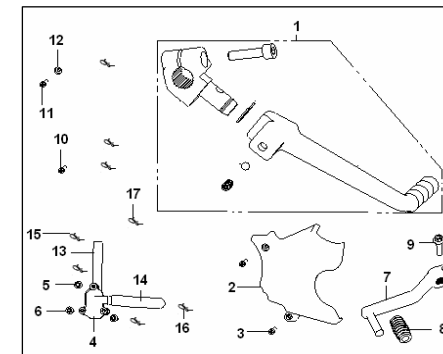
ON ROAD
OFF ROAD



ENGINE ATTACHMENT

NO.	PART NO.	EN DESCRIPTION	QTY	NOTES
1	08350D010000	LEVER ASSY, KICK STARTER ASSY	1	
2	162012150010	SIDE COVER,L.R silver	1	
3	B02050502064	SCREW M5×20MM	2	
4	49800D010000	UNILATERALISM VALVE ASSY	1	
5	B01090603065	BOLT M6×30MM	1	
6	B01090604065	BOLT M6×40MM	2	
7	08383D010000	ROCKERARM,LEVEL ASSY	1	
8	08372D010000	RUBBER,GEAR SHIFT	1	
9	B01090602565	BOLT M6×25MM	1	
10	B01090601665	BOLT M6×16MM	1	
11	B01090601265	BOLT M6×12MM	1	
12	B07090000605	WASHER 6MM	1	
13	49851D010000	PIPE	1	
14	B16010945001	PIPE Φ9×Φ17×500mm	1	
15	49804D010000	CLIP 17.5MM	2	
16	49805D010000	CLIP 16.5MM	2	
17	08060BW0T000	CLIP 16-25MM	4	

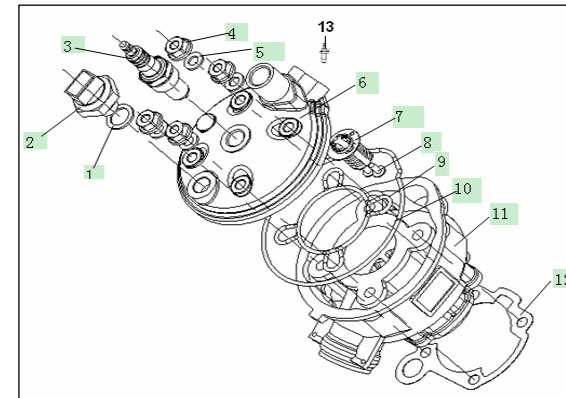
NOTES



TX 50

E01 CYLINDER HEAD ASSY

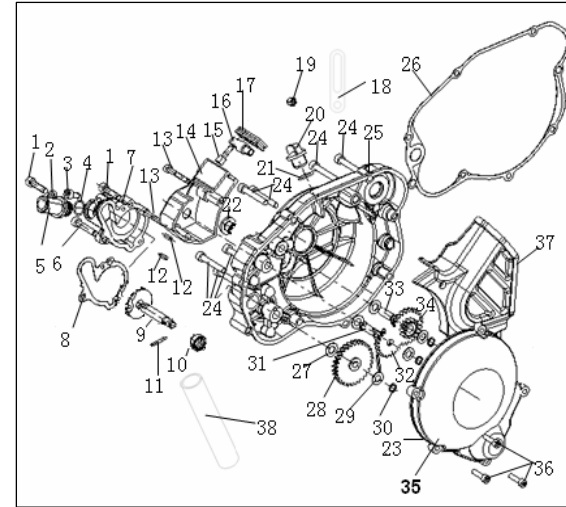
NO.	PART NO.	EN DESCRIPTION	QTY	NOTES
1	307991500320	WASHER	1	
3	31100000B15F000	SPARK PLUG	1	BR8ES
4	304290700068	HEXAGON NUT WITH FLANGE	4	
5	31000006B15F000	WASHER,PLAIN	4	
6	109061170020	CYLINDER HEAD	1	
8	313050401065	SCREW M4X10	2	
9	31000003B15F000	SMALL SEAL RING	1	
10	31000004B15F000	BIG SEAL RING	1	
11	25000002B15F000	CYLINDER	1	
12	25000001B15F000	GASKER CYLINDER	1	
13	30531N03F001	WATER TEMPERATURE SENSOR	1	



TX 50

E02 CRANKCASE COVER ASSY

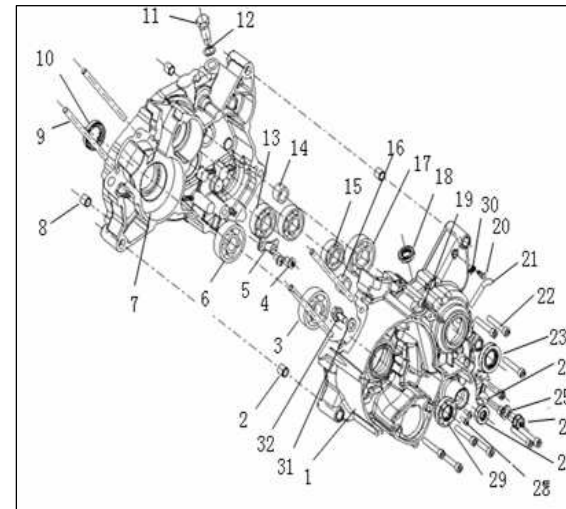
NO.	PART NO.	EN DESCRIPTION	QTY	NOTES
1	B02040602585	BOLT M6X25	2	
2	14000021B15F000	WASHER 6	1	
3	B02040601285	BOLT M6X12	1	
4	315114819010	O-RING	1	
5	14000020B15F000	WATER OUTLET SEAT,WATER PUMP	1	
6	B02040605585	BOLT M6X55	1	
7	14000006B15F000	COVER,WATER PUMP	1	
8	14000019B15F000	PAD,COVER,WATER PUMP	1	
9	14200000B15F000	IMPELLER,WATER PUMP	1	
10	14300000B15F000	MECHANICAL SEAL	1	
11	14000023B15F000	DRIVE PIN	2	
12	309040401010	PIN ,DOWEL,WATER PUMP	2	
13	B02040503585	BOLT M5X35	2	
14	28201D03HN00	COVER,OIL PUMP	1	
15	B02040602585	BOLT M6X25	2	
16	14000013B15F000	OIL PUMP STEEL WIRE FIXING LEG	1	
17	14000024B15F000	RUBBER PLUG	1	
18	19213H08F000	CLIP,TUBE	2	
19	30426060000	NUT M6	1	
20	14000016B15F000	CAP,OIL FILLER	1	
21	PS2000G-321802A7	O-RING 13.3X2.65	1	
22	14100000B15F000	BOLT M8X8	1	
23	169071170000	GASKET CRANKCASE LEFT	1	
24	B02040603063	BOLT M6X30	7	
25	14000003B15F000	COVER,R.CRANKCASE	1	
26	14000002B15F000	PAD,COVER,R.CRANKCASE	1	
27	14000007B15F000	WASHER,PLAIN □□	3	
28	14000005B15F000	GEAR,WATER PUMP	1	
29	14000004B15F000	WASHER,PLAIN □	4	
30	B08080080000	CIRCLIP 8	3	
31	14000008B15F000	JOINT SHAFT,OIL PUMP	1	
32	14000018B15F000	DRIVE GEAR,OIL PUMP	1	
33	14000009B15F000	MIDDLE SHAFT	1	
34	14000011B15F000	MIDDLE GEAR	1	
35	207200.153041	COVER,L.CRANKCASE	1	
36	B02040502085	BOLT M5X20	5	
37	207201.055041	LEFT REAR COVER	1	
38	321011200111	SILICA GEL PIPE	1	



TX 50

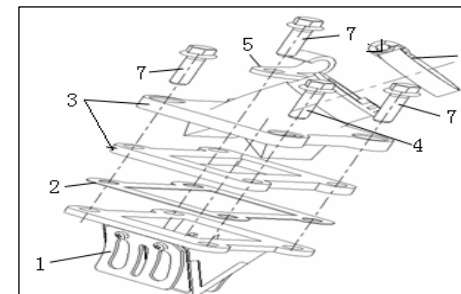
E03 CRANKCASE ASSY

NO.	PART NO.	EN DESCRIPTION	QTY	NOTES
1	159041170001	CRANKCASE,LEFT	1	
2	206505.010000	PIN,DOWEL	2	
3	B12060303N64	BEARING,RADIAL BALL	1	
4	302220601262	SCREW M6X12	2	
5	206228.003000	BEARING PRESSURE PLATE	1	
6	B12060303N64	BEARING,RADIAL BALL	1	
7	159051170002	CRANKCASE,RIGHT	1	
8	320070080121	PIN,DOWEL	2	
9	206226.012000	STUDBOLT,CYLINDER	4	
10	206243.001000	OIL SEAL□	1	
11	26000005B15F000	LOCATING SCREW	1	
12	206238.001000	WASHER	1	
13	B12060203N70	BEARING,RADIAL BALL	2	
14	312914201200	BEARING	1	
15	B12060202N70	BEARING,RADIAL BALL	1	
16	312914201200	BEARING	1	
17	B12060204N70	BEARING,RADIAL BALL	1	
18	317313524051	SEAL 13.7X24X5	1	
19	302040605000	SCREW M6X50	1	
20	26100006B15F000	HOSE,BREATHER	1	
21	206208.018000	HOSE,BREATHER	1	
22	B02040604085		12	
23	206243.002000	OIL SEAL	1	
24	202307.001000	CLUTCH STAY WIRE CLIP	1	
25	206321.003000	WITHOUT ASBESTOS PAPER PAD	1	
26	210112.021000	SHIFT SENOR	1	
27	210341.002000	OIL SEAL	1	
28	302210401200	CROSS RECESS PAN HEAD SCREW M4X12	2	
29	206243.003000	OIL SEAL I	1	
30	19217G02F00A	CLIP	1	
31	18105H03F000	WASHER	1	
32	B01090801263	BOLT	1	



E04 REED VALVE AND AIR DUCT COMPONENTS

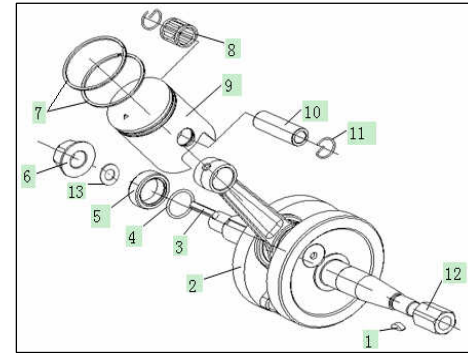
NO.	PART NO.	EN DESCRIPTION	QTY	NOTES
1	32102B20F000	REED VALVE COMPONENT	1	
2	32101B20F000	PAD,REED VALVE	1	
3	119011170002	AIR DUCT	1	
4	206412.001472	SCREW	1	
5	219237.001000	CLIP,OIL PUMP TUBE	1	
6	270585050000	CLAMP	1	
7	302040602065	SCREW	3	



TX 50

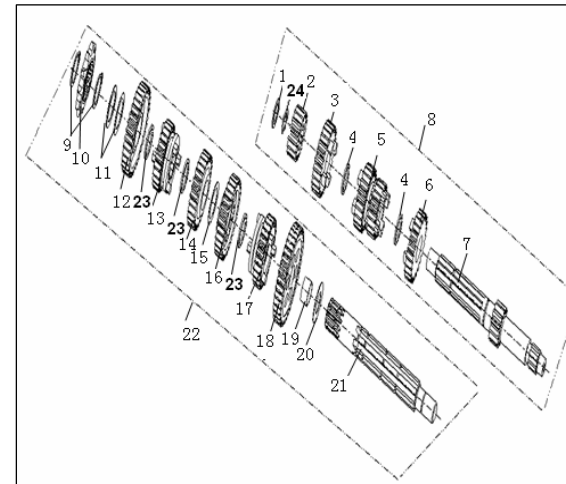
E05 PISTON,CONNECTING ROD & CRANKSHAFT ASSY

NO.	PART NO.	EN DESCRIPTION	QTY	NOTES
1	208421.003000	KEY	1	
2	208100.026000	CRANKSHAFT & CONROD ASSY	1	
3	208421.006000	KEY B4X20	1	
4	15000002B15F000	RING 15.5X1.5	1	
5	208413.009000	CRANKSHAFT OIL SEALED BUSH	1	
6	200181170000	NUT,LOCK	1	
7	15100001B15F000	RING assy	1	JOGO
8	15100006B15F000	BEARING	1	
9	179131170000	PISTON	1	
10	15100004B15F000	PIN,PISTON	1	
11	170092080000	CIRCLIP	2	
12	208228.009000	NUT,LOCK	1	
13	170131170000	WASHER , SPRING	1	



E06 DRIVE&DRIVEN SHAFT ASSY

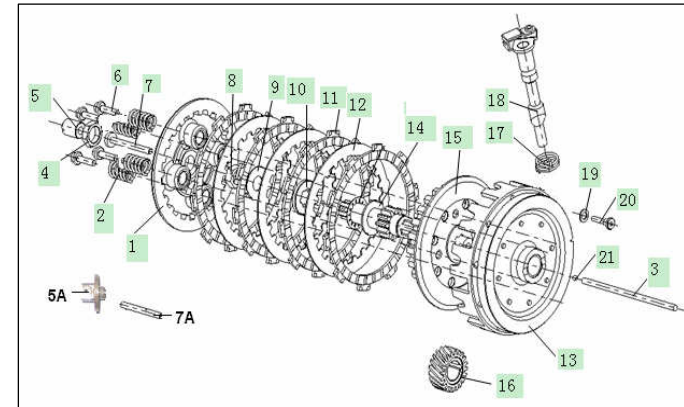
NO.	PART NO.	EN DESCRIPTION	QTY	NOTES
1	B08010001400	CIRCLIP(14)	1	
2	17100002B15F000	GEAR,2ND DRIVE	1	
3	17100003B15F000	GEAR,6TH DRIVE	1	
4	17100004B15F000	CIRCLIPφ18	2	
5	17100005B15F000	GEAR,3RD&4TH DRIVE	1	
6	17100006B15F000	GEAR,5TH DRIVE	1	
7	17100007B15F000	SHAFT,DRIVE	1	
8	219131170000	DRIVE SHAFT ASSY.	1	
9	B08080200000	CIRCLIP(20)	2	
10	17200015B15F000	SPROCKET	1	
11	17200006B15F000	WASHER II	2	
12	17200003B15F000	GEAR,2ND DRIVEN	1	
13	17200004B15F000	GEAR,6TH DRIVEN	1	
14	17200005B15F000	GEAR,4TH DRIVEN	1	
15	17200012B15F000	WASHER V	1	
16	17200011B15F000	GEAR,3RD DRIVEN	1	
17	17200007B15F000	GEAR,5TH DRIVEN	1	
18	17200008B15F000	GEAR,1ST DRIVEN	1	
19	17200013B15F000	BUSH II	1	
20	17200009B15F000	WASHER III	1	
21	17200001B15F000	SHAFT,DRIVEN	1	
22	209102.022000	DRIVEN SHAFT ASSY.	1	
23	17225J01F930	CIRCLIPφ20	3	
24	210491170000	WASHER	1	



TX 50

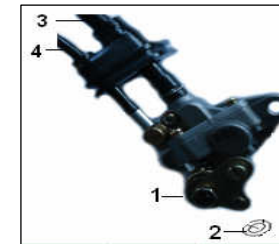
E07 CLUTCH

NO.	PART NO.	EN DESCRIPTION	QTY	NOTES
1	200101170001	HUB,CLUTCHSLEEVE	1	
2	24000010B15F000	SPRING,CLUTCH	4	
3	24000001B15F000	INNER SEPARATED CARRIER ROD	1	
4	24000013B15F000	NUT,LOCK	1	
5A	200261170000	HANDSPIKE	1	
6	B13010502003	HEXAGON BOLT WITH FLANGE	4	
7A	200271170000	SCREW,LOCK	1	
8	24000012B15F000	NUT,LOCK	1	
9	24000008B15F000	WASHER,thust	1	
10	24000004B15F000	INNER GEAR GASKER	1	
11	24300000B15F000	FRICTION PLATE	4	
12	24000007B15F000	PRESSURE PLATE	3	
13	24200000B15F000	CLUTCH DRUM COMP.	1	
14	24000003B15F000	WASHER,PLAIN	1	
15	24000006B15F000	CENTER,CLUTCH	1	
16	24000005B15F000	GEAR,DRIVE	1	
17	24100005B15F000	SPRING	1	
18	209051170003	SEPERATE PULL ROD WIELDING COMPONENT	1	
19	307992012120	WASHER	1	
20	24100007B15F000	LOCATING SCREWW	1	
21	B06010130000	STELL BALL	1	



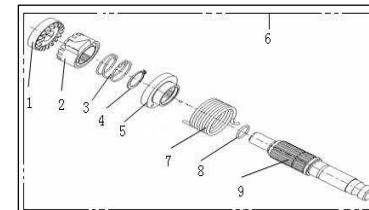
E08 OIL PUMP ASSY

NO.	PART NO.	EN DESCRIPTION	QTY	NOTES
1	38000000B15F000	OIL PUMP ASSY	1	
2	260411170000	GASKET	1	
4	38000004B15F000	TUBE	1	
5	38000002B15F000	OIL OUTLEAK TUBE	1	



E09 KICK STARTER ASSY

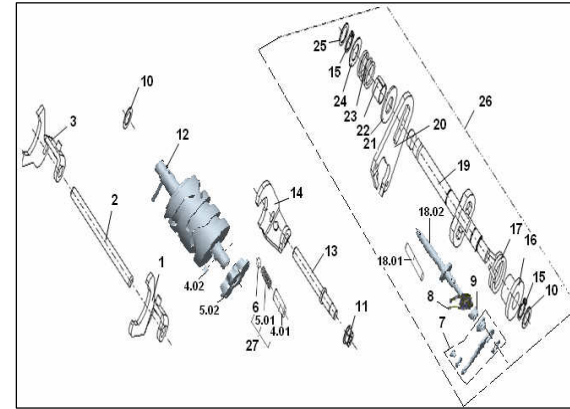
NO.	PART NO.	EN DESCRIPTION	QTY	NOTES
1	17600001B15F000	GEAR,KICK STARTER	1	
2	17600002B15F000	RATCHET	1	
3	17600003B15F000	SPRING,RATCHET	1	
4	B08080180000	CIRCLIP(18)	1	
5	17600004B15F000	SEAT,KICK STARTER SPRING	1	
6	17600000B15F000	KICK STARTER ASSY	1	
7	17600005B15F000	SPRING,KICK STARTER	1	
8	17600007B15F000	O RING(12.5X1.5)	1	
9	17600008B15F000	SHAFT,KICK STARTER	1	



TX 50

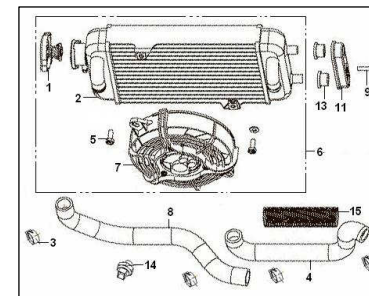
E10 GEARSHIFT MECHANISM

NO.	PART NO.	EN DESCRIPTION	QTY	NOTES
1	219121170001	FORK,RIGHT GEARSHIFT	1	
2	210303.012000	SHAFT,DRIVEN FORK	1	
3	219101170001	FORK,LEFT GEARSHIFT	1	
4.02	210291170000	COVER, DRUM STOPPER	1	
5.02	210251170000	PIN,PLATE	1	
7	210351170000	GEARSHIFT DRUM STOPPER ASSY.	1	
8	210341170000	SPRING,DRUM STOPPER	1	
9	210431170000	COVER,SPRING	1	
10	210230.007000	WASHER X	2	
11	441031C03000	NUT,FLANGE(M6)	1	
12	219041170001	DRUM ASSY.,GEARSHIFT	1	
13	210303.013000	SHAFT,DRIVE FORK	1	
14	219111170000	FORK,CENTER GEARSHIFT	1	
15	B08010001200	CIRCLIPφ12	2	
16	17400004B15F000	COVER,SPRING I	1	
17	17400003B15F000	SPRING I	1	
18	210361170000	PIN,RETURN SPRING	1	
19	17420000B15F000	SHAFT,GEARSHIFT	1	
20	17410000B15F000	PLATE,GRARSHIFT	1	
21	17400001B15F000	WASHER I,GEARSHIFT	1	
22	17400005B15F000	COVER,SPRING II	1	
23	17400006B15F000	SPRING II	1	
24	17400002B15F000	WASHER II,GEARSHIFT	1	
25	17400007B15F000	WASHER III,GEARSHIFT	1	
26	219011170000	SHAFT ASSY.,GEARSHIFT	1	



E11 RADIATOR ASSY

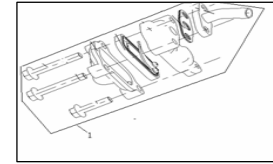
NO.	PART NO.	EN DESCRIPTION	QTY	NOTES
1	21111000B15F000	WATER MACHINE COMPONENT	1	
2	222225.001000	RADIATOR	1	
3	221218.006000	CLIP,TUBE	4	
4	221219.008000	HOSE D,WATER	1	
5	B02040602063	BOLT M6X20	2	
6	21100000B15F000	RADIATOR ASSY	1	
7	221108.003000	FAN ASSEMBLY	1	
8	221219.009000	HOSE C,WATER	1	
9	B02040601085	BOLT M6X18	2	
11	221311.001000	FIXING SEAT,RADIATOR	1	
13	21000005B15F000	RUBBER,RADIATOR SETTING	2	
14	222120.002000	THE RMOSTAT	1	
15	221215.003000	SPRING	1	



TX 50

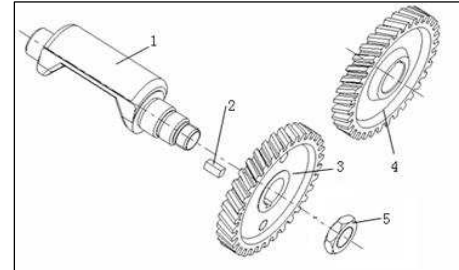
E12 SECONDARY AIR ASSY

NO.	PART NO.	EN DESCRIPTION	QTY	NOTES
1	229104.007000	AIR FEED	1	



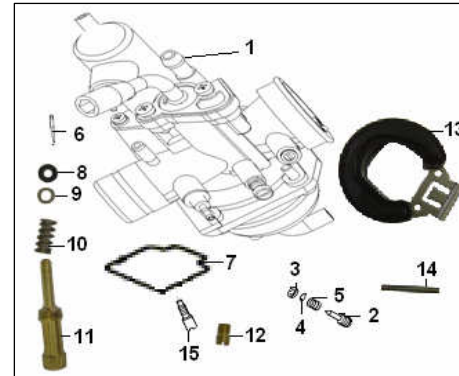
E13 SHAFT ASSY, BALANCER

NO.	PART NO.	EN DESCRIPTION	QTY	NOTES
1	208400.017000	SHAFT,BALANCER	1	
2	311730040008	KEY(B4X8)	1	
3	208401.008000	DRIVEN GEAR,BALANCER	1	
4	208220.013000	DRIVE GEAR,BALANCER	1	
5	208228.010000	LOCK NUT,BALANCER	1	



E14 CARBURETOR ASSY

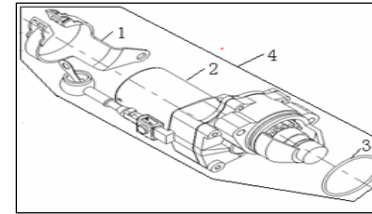
NO.	PART NO.	EN DESCRIPTION	QTY	NOTES
1	224100.139000	CARBURETOR ASSY	1	
2	224237.019000	SCREW , AIR	1	
3	224238.017000	O RING , AIR SCREW	1	
4	224238.018000	WASHER , AIR SCREW	1	
5	224228.017000	SPRING , AIR SCREW	1	
6	224208.038000	JET NEEDLE, THROTTLE VALVE	1	
7	224416.017000	GASKET , FLOAT CHAMBER	1	
8	224240.007000	O RING , VALVE PISTON	1	
9	224240.008000	WASHER , VALVE PISTON	1	
10	224229.011000	SPRING , VALVE PISTON	1	
11	224239.012000	SCREW , VALVE PISTON	1	
12	224202.071000	JET, MAIN	1	
13	224215.018000	FLOAT	1	
14	224222.020000	PIN, FLOAT	1	
15	224203.043000	JET, IDLE	1	



TX 50

E15 STARTING MOTOR

NO.	PART NO.	EN DESCRIPTION	QTY	NOTES
1	218422.001000	MOTOR FIXER	1	
2	218100.031000	STARTING MOTOR	1	
3	315138718000	O RING(38.7X1.8)	1	
4	218000.001000	STARTING MOTOR	1	



E16 GENERATOR

NO.	PART NO.	EN DESCRIPTION	QTY	NOTES
1	223100.005000	GENERATOR	1	

