

LINHAI LH 320 PROMAX EFI 4x4

V240313

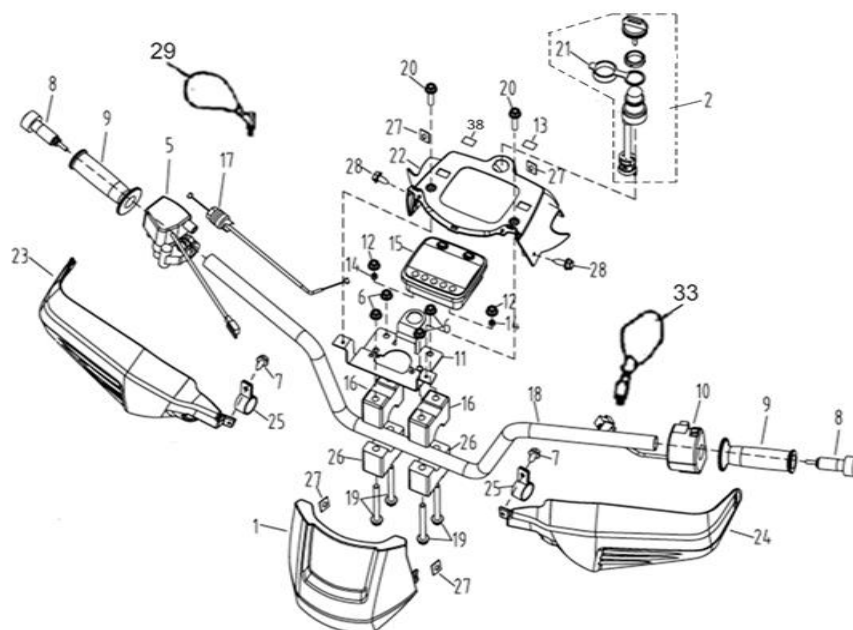


ÍNDICE

ESQ	QUADRO	PAG
B1	HANDLEBAR	3
B2	FUEL TANK (T3 EFI)	4
B3	REAR FENDERS AND FRAME (T3 EFI)	5
B4	REAR FENDERS AND FRAME (T3 EFI)	6
B5	FRONT BODY PROMAX (T3 EFI)	7
B6	SHOCK ABSORBER FRONT (T3 EFI)	8
B7	SWINGARM ASSY	9
B8	WHEEL FRONT (T3 EFI)	10
B9	WHEEL REAR (T3 EFI)	11
B10	SHOCK ABSORBER REAR (T3 EFI)	12
B11	FRONT GEAR-BOX BRACKET (T3 EFI) (FOR 4WD)	13
B12	TRANSMISSION (4WD)	14
B13	TRANSMISSION (4WD)	15
B14	MAIN TRANSMISSION ASSEMBLY	16
B15	SHIFT ROD (T3 EFI)	17
B16	FRONT DRIVE AXLE (T3 EFI) (FOR 4WD)	18
B17	FRONT AND REAR KNUCKLE ASSY (T3 EFI) (FOR 4WD)	19
B18	STEERING COLUMN (T3 EFI)	20
B19	ELECTRICAL SYSTEM (T3 EFI)	21
B20	BRAKING SYSTEM (T3 EFI)	22
B21	BRAKING SYSTEM (T3 EFI)	23
B22	AUXILIARY BRAKE (T3 EFI)	24
B23	PEDAL, BRAKE (T3 EFI)	25
B24	BUMPER AND RACK	26
B25	BUMPER AND RACK	27
B26	ENGINE ASSY (T3 EFI)	28
B27	FRONT GEAR-BOX (FOR 4WD)	29
B28	REAR GEAR-BOX	30
B29	STICKER (GREY MODEL)	31
B30	STICKER (RED AND BLACK MODEL)	32
B31	WARNING DECALS	33
B32	WINCH (ONLY AS AN ACESSORY)	34

ESQ	MOTOR	PAG
E01	CYLINDER (EFI T3b)	35
E02	CRANKSHAFT COMP	36
E03	VALVE	37
E04	CAMSHAFT	38
E05	WATER PUMP AND OIL PUMP	39
E06	RADIATOR (EFI T3)	40
E07	AIR CLEANER (EFI T3)	41
E08	FUEL INJECTION	42
E09	EXHAUST (EFI T3b)	43
E10	CRANKCASE	44
E11	LEFT COVER	45
E12	RIGHT COVER	46
E13	STARTER	47
E14	CLUTCH	48
E15	GENERATOR (EFI T3)	49
E16	ENGINE HOLDER	50

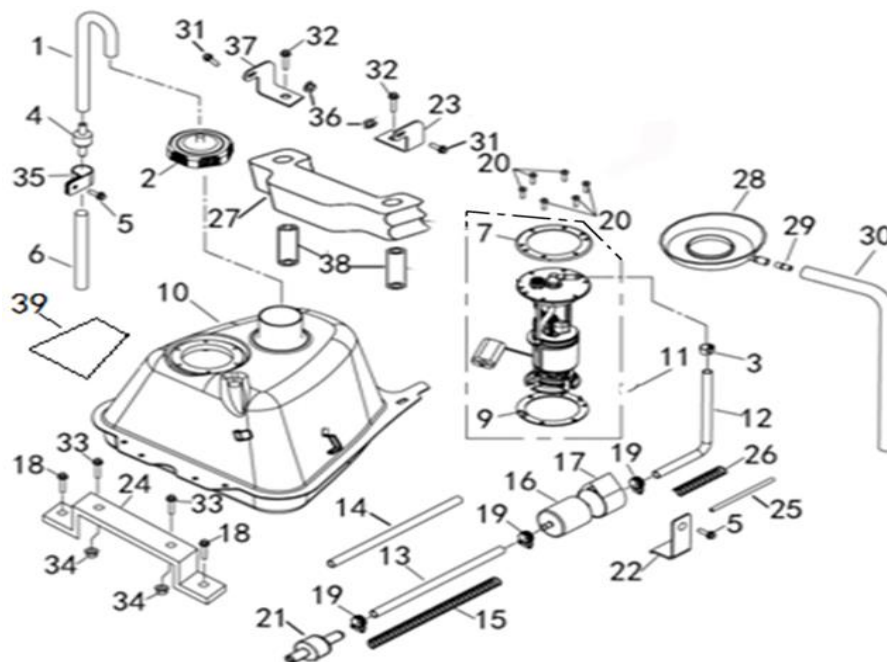
B1 HANDLEBAR



Nº	CÓDIGO	DESCRIÇÃO	Qt.	OBSERVAÇÕES
1	LH00027415	FRONT SPEEDOMETER COVER	1	
2	LH00027601	IGNITION SWITCH WITH KEY (USED FOR WATERPROOF)	1	
4	LH00025004	THREADED NUT	1	
5	LH00027811	THROTTLE CONTROL (WITH 2WD/4WD SWITCH)	1	
6	LH00011455	NUT M8	4	
7	LH00011053	SCREW ST4.8X12	2	
8	LH00072037	NEW GUARD, HANDLEBAR END ASSY.	2	
9	LH00035727	GRIP	2	
9A	LH00062289	ELECTRIC HEATED GRIP	1	
10	LH00027602	SWITCH ASSY	1	
11	LH00025008	SPEEDOMETER BRACKET	1	
12	LH00011454	NUT M6	2	
13	LH00025298	BRAKE FLUID INDICATOR	1	
14	LH00070447	RUBBER WASHER	2	
15	LH00025702	LCD SPEEDOMETER	1	
16	LH0020112a	HANDLEBAR CLAMP	2	
17	LH00027551	THROTTLE CABLE	1	
18	LH0027385E	HANDLEBAR	1	
19	LH00010531	BOLT M8X80	4	
20	LH00010201	SCREW M5X16	2	
21	LH00027257	IGNITION SWITCH COVER	1	
22	LH00027416	REAR SPEEDOMETER COVER	1	
23	LH00027417	HANDLEBAR COVER RIGHT	1	
24	LH00027418	HANDLEBAR COVER LEFT	1	
25	LH00027419	HANDLE COVER INSTALLATION BELT	2	
26	LH0020112a	HANDLEBAR CLAMP	2	
27	LH00022346	NUT ST4.8	4	
28	LH00010520	SCREW ST4.8X12	4	
29	LH00036149	REAR VIEW MIRROR RIGHT	1	
33	LH00036148	REAR VIEW MIRROR LEFT	1	
38	LH00029838	THE LABEL OF IGNITION SWITCH	1	

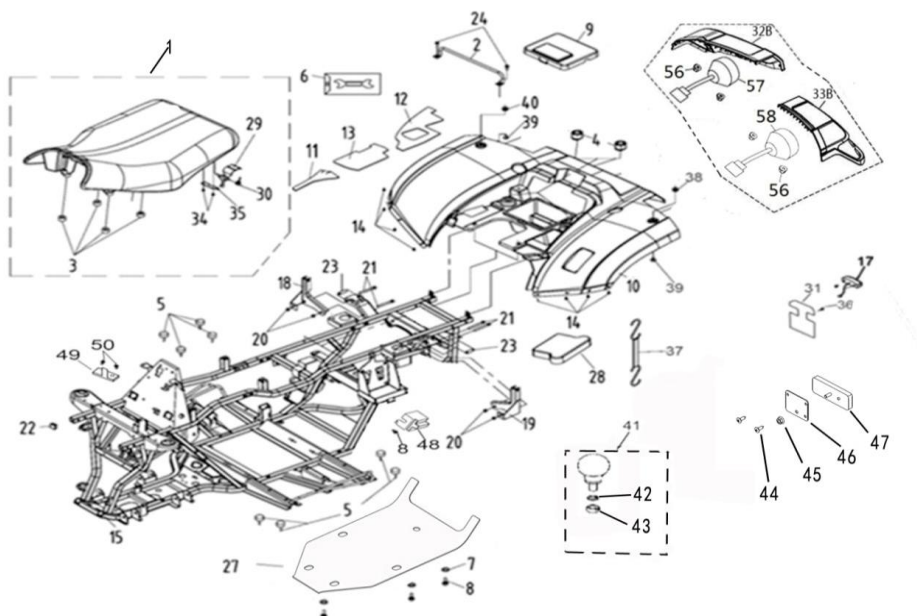
LH 320 PROMAX EFI 4x4

B2 FUEL TANK (T3 EFI)



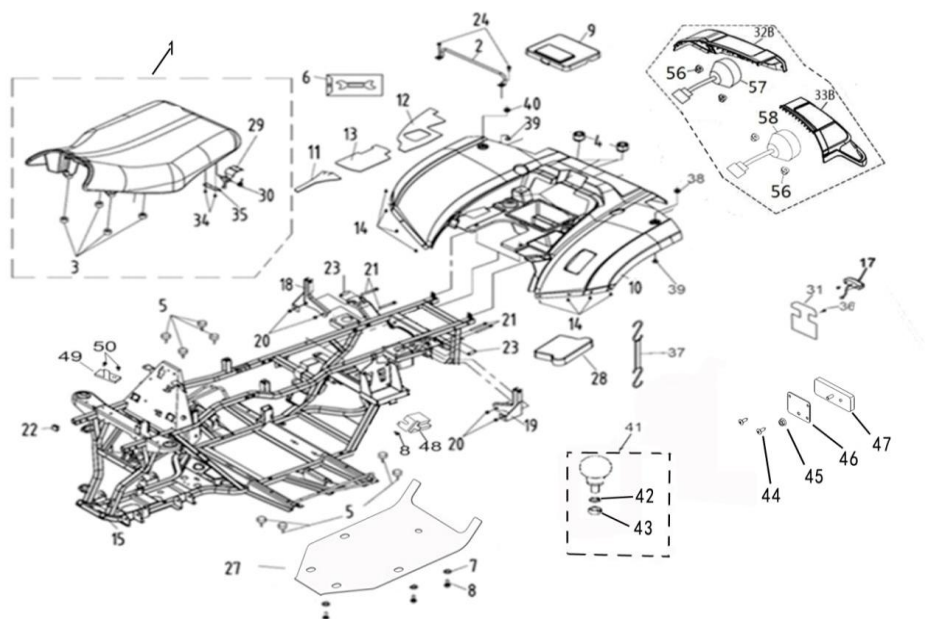
Nº	CÓDIGO	DESCRIÇÃO	Qt.	OBSERVAÇÕES
1	LH00035501	BREATHER PIPE (φ5Xφ9X450)	1	
2	LH00070725	FUEL CAP	1	
3	LH00084428	SINGLE EAR CLAMP (φ4.5)	1	
4	LH00025037	DUMPING VALVE	1	
5	LH00011219	BOLT M6X12	2	
6	LH00070734	TUBE (φ4.5xφ8x700mm)	1	
7	LH00072251	PLATE	1	
9	LH00036440	RUBBER WASHER	1	
10	LH00027832	FUEL TANK	1	
11	LH00025365	FUEL PUMP	1	
12	LH00027834	FUEL HOSE 1	1	
13	LH00071418	FUEL HOSE 2	1	
14	LH00036073	FUEL LINE ADIABATIC PELLICLE	1	
15	LH00036077	FUEL LINE SPRING	1	
16	LH00070842	FUEL FILTER	1	
17	LH00070845	FUEL FILTER INSTALLATION	1	
18	LH00011097	BOLT M6X16	1	
19	LH00071658	HOSE CLAMPS 8/14	3	
20	LH00010201	SCREW M5X16	6	
21	LH00073146	Quick Fitting Assy 7.89	1	
22	LH00036142	PLATE, FUEL FILTER	1	
23	LH00025023	BRACKET, L	1	
24	LH00027553	MOUNTING BRACKET, FUEL TANK	1	
25	LH00027864	FUEL LINE ADIABATIC PELLICLE	1	
26	LH00035522	FUEL LINE SPRING	1	
27	LH00020209	MOUNTING BRACKET	1	
28	LH00036078	The OIL SPILL	1	
29	LH00060210	JOINT	1	
30	LH00028095	TUBE, FUEL CAP BREATHING (φ7xφ10x450mm)	1	
31	LH00011097	BOLT M6X16	2	
32	LH00011362	BOLT M6X60	2	
33	LH00010168	BOLT M8X16	2	
34	LH00010079	NUT M8	2	
35	LH00025351	DUMP VALVE FIXING PLATE	1	
36	LH00011454	NUT M6	2	
37	LH00025024	BRACKET, R	1	
38	LH00020210	FUEL TANK BUFFER SLEEVE	2	
39	LH00027837	FUEL TANK ADIABATIC PELLICLE	1	

B3 REAR FENDERS AND FRAME (T3 EFI)



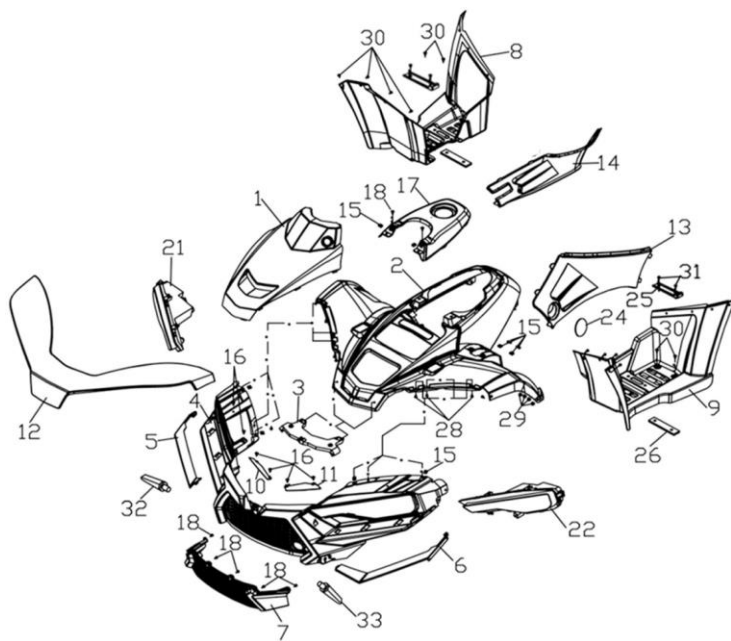
Nº	CÓDIGO	DESCRIÇÃO	Qt.	OBSERVAÇÕES
1	LH00035835	SEAT	1	
2	LH00035836	LATCH ASSEMBLY	1	
3	LH00025042	RUBBER, SEAT SETTING 1	6	
4	LH00070445	RUBBER , SEAT SETTING 2	2	
5	LH00020316	RUBBER PAD	8	
6	LH00025044	TOOL	1	
7	LH00020331	WASHER 6	8	
8	LH00011194	BOLT M6X18	10	
9	LH0025045a	TOOL BOX CAP	1	
10	LH0357562G	REAR FENDER (RED)	1	
10	LH0357569B	REAR FENDER (GRAY CEMENT)	1	
10	LH0357561F	REAR FENDER (BLACK)	1	
11	LH00025047	FOOTREST RIGHT ADIABATIC PELLICLE	1	
12	LH00025366	REAR MUD ADIABATIC PELLICLE 1	1	
13	LH00025367	REAR MUD ADIABATIC PELLICLE 2	1	
14	LH00026370	SCREW M6X16	8	
15	LH00025703	FRAME ASSY. (T3 EFI)	1	
16	LH00011099	SCREW M6X20	6	
17	LH00083459	LENS, LICENSE LIGHT	1	
18	LH00025054	TRESTLE RIGHT	1	
19	LH00025055	TRESTLE LEFT	1	
20	LH00025056	BOLT M8X70	2	
21	LH00010776	NUT 8	4	
22	LH00070287	RUBBER COVER	4	
23	LH00036445	SPACER	4	
24	LH00011031	BOLT M6X12	2	
25	LH00011221	NUT	2	
26	LH00011333	WASHER 6	16	
27	LH00025704	PLASTIC PLANT	1	
28	LH00035078	BATTERY 18 Ah COVER	1	
29	LH00070788	HOOK BRACKET, SEAT LOCK	1	
30	LH00070802	SPRING	1	
31	LH00027606	BRACKET, LENS, LICENSE LIGHT	1	
32B	LH00025369	TAILLIGHT COVER, R	1	
33B	LH00025371	TAILLIGHT COVER, L	1	
34	LH00011222	SCREW ST4.2X13	8	
35	LH00070803	BAFFLE.SEAT	1	
36	LH00026370	SCREW M6X16	2	
37	LH00022018	TIE (USED FOR 18 Ah)	1	
38	LH00070449	COVER BUFFER	2	
39	LH00070543	SPACER, COVER BUFFER	2	
41	LH00025294	PULL THE BALL (E13 55R-014154)	1	
42	LH00025705	WASHER	1	
43	LH00025706	NUT	1	

B4 REAR FENDERS AND FRAME (T3 EFI)



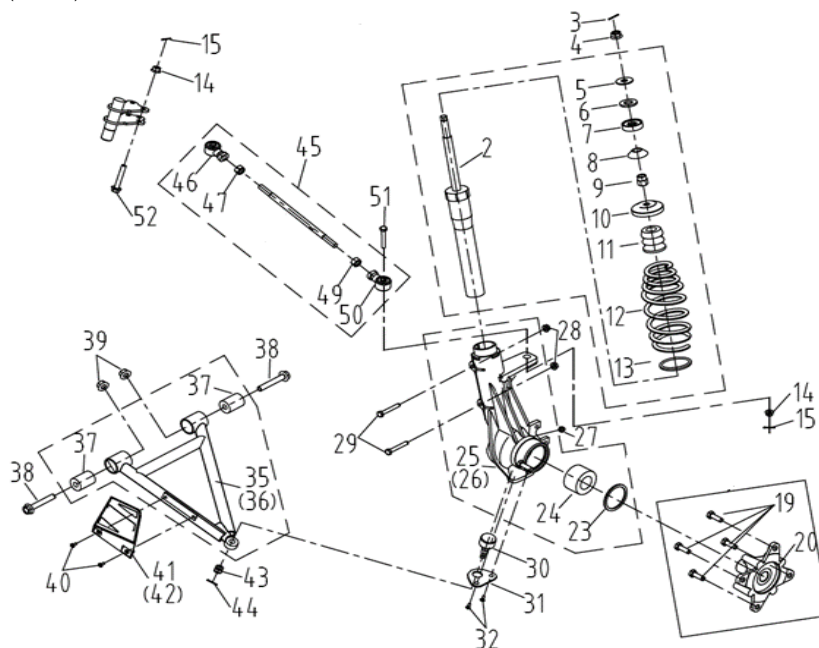
Nº	CÓDIGO	DESCRIÇÃO	Qt.	OBSERVAÇÕES
44	LH00011222	SCREW ST4.2X13	4	
45	LH00025707	NUT M5	2	
46	LH00035758	REAR REFLECTOR PLATE	2	
47	LH00036514	REAR REFLECTOR	2	
48	LH00035907	STARTER RELAY SHIELD	1	
49	LH00072305	ELECTRONIC DUMP SWITCH CONNECTION PLATE (FOR EFI)	1	
50	LH00010753	SCREW M4X16 (FOR EFI)	2	
56	LH00011221	NUT	2	
57	LH00025376	RIGHT REAR COMBINATION LAMP	1	
58	LH00025377	LEFT REAR COMBINATION LAMP	1	

B5 FRONT BODY PROMAX (T3 EFI)



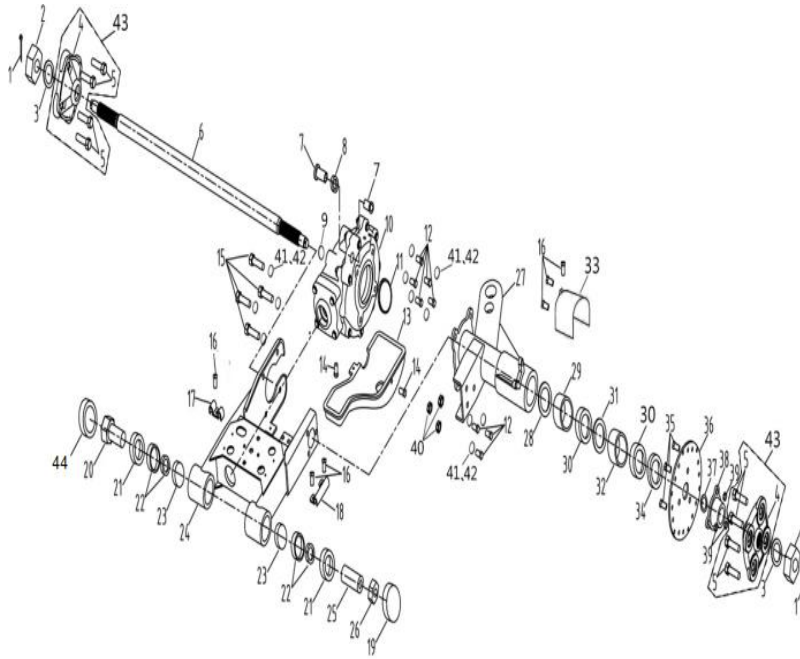
Nº	CÓDIGO	DESCRIÇÃO	Qt.	OBSERVAÇÕES
1	LH00025064	FRONT COVER	1	
2	LH0252812G	FRONT BODY (RED)	1	
2	LH0252819B	FRONT BODY (GRAY CEMENT)	1	
2	LH0252811F	FRONT BODY (BLACK)	1	
3	LH00038217	CONNECTING BRACKET	1	
4	LH00038218	PLASTIC BUMPER	1	
5	LH0382192G	RIGHT TRIM BAR (RED)	1	
5	LH0382199B	RIGHT TRIM BAR (GRAY CEMENT)	1	
5	LH0382191F	RIGHT TRIM BAR (BLACK)	1	
6	LH0382202G	LEFT TRIM BAR (RED)	1	
6	LH0382209B	LEFT TRIM BAR (GRAY CEMENT)	1	
6	LH0382201F	LEFT TRIM BAR (BLACK)	1	
7	LH00035927	UNDER VENTILATION GRID	1	
8	LH00025071	FOOTREST RIGHT	1	
9	LH00025072	FOOTREST LEFT	1	
10	LH00038222	RIGHT BAFFLE PLATE	1	
11	LH00038223	LEFT BAFFLE PLATE	1	
12	LH00038221	HEAD LAMP CASE	1	
13	LH00025077	SIDE COVER L	1	
14	LH00025076	SIDE COVER R	1	
15	LH00022346	NUT ST4.8	12	
16	LH00011222	SCREW ST4.2x13	12	
17	LH00035561	COVER, FUEL TANK TOP	1	
18	LH00011088	SCREW ST4.8x16	18	
21	LH00038224	LED LIGHT, FR	1	
22	LH00038225	LED LIGHT, FL	1	
24	LH00035843	LEFT SIDE COVER	1	
25	LH00070336	STEP (SHORT)	2	
26	LH00070300	RUBBER WASHER	2	
29	LH00011064	NUT M6	8	
30	LH00026370	SCREW M6X16	16	
31	LH00046193	SCREW M6X20	4	
32	LH00038232	FRONT INDICATOR LIGHT R	1	
33	LH00038233	FRONT INDICATOR LIGHT L	1	

B6 SHOCK ABSORBER FRONT (T3 EFI)



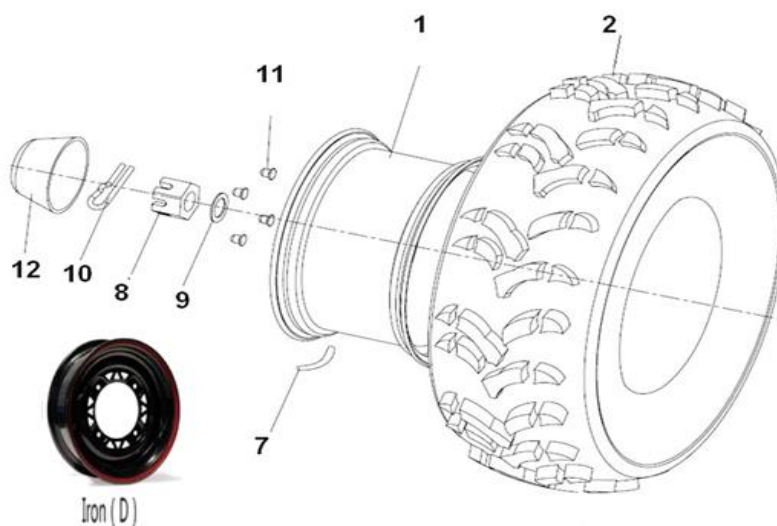
Nº	CÓDIGO	DESCRIÇÃO	Qt.	OBSERVAÇÕES
2	LH00025288	STRUT BUMPER	2	
3	LH00011555	COTTER PIN 2X20	2	
4	LH00011577	NUT M14X1.5	2	
5	LH00021802	WASHER 14	2	
6	LH00021803	SPACER RUBBER	2	
7	LH00021804	UPPER PIVOT BALL	2	
8	LH00021807	LOWER PIVOT BALL	2	
9	LH00021806	NUT M14X1.5	2	
10	LH00021808	SPRING RETAINER	2	
11	LH00027191	BUFFER BLOCK	2	
12	LH00021809	SPRING	2	
13	LH00021813	SPRING RETAINER	2	
14	LH00011510	NUT M10X1.25	4	
15	LH00027215	COTTER PIN 2.5X25	4	
19	LH00020806	WHEEL STUD	8	
20	LH00025711	FRONT WHEEL HUB	2	
23	LH00026912	CIRCLIP	2	
24	LH00026913	BEARING	2	
25	LH00047048	STRUT BODY LEFT	1	
26	LH00047049	STRUT BODY RIGHT	1	
27	LH00027074	GREASE FITTING	2	
28	LH00011541	NUT M8	4	
29	LH00011540	BOLT M8X55	4	
30	LH00020512	BALL JOINT STUD	2	
31	LH00020513	BALL JOINT MOUNTING BRACKET	2	
32	LH00010022	BOLT M6X12	4	
35	LH00025096	A-ARM LEFT	1	
36	LH00025097	A-ARM RIGHT	1	
37	LH0020524f	BUSHING	4	
38	LH0020522f	A-ARM PIVOT SHAFT	4	
39	LH00011509	NUT M12X1.25	4	
40	LH00011062	SCREW M5X12	4	
41	LH00020519	A - ARM SHIELD LEFT	1	
42	LH00020628	A - ARM SHIELD RIGHT	1	
43	LH00027067	NUT M10X1.25	2	
44	LH00027215	COTTER PIN 2.5X25	2	
45	LH0020629B	TIE ROD ASSY	2	
46	LH00020507	TIE ROD END B (RIGHT)	2	
47	LH00011198	JAM NUT (RIGHT)	2	
49	LH00020506	JAM NUT (LEFT)	2	
50	LH00020503	TIE ROD END A (LEFT)	2	
51	LH00010018	BOLT M10X1.25X55	2	
52	LH00027794	BOLT M10X1.25X57	2	

B7 SWINGARM ASSY



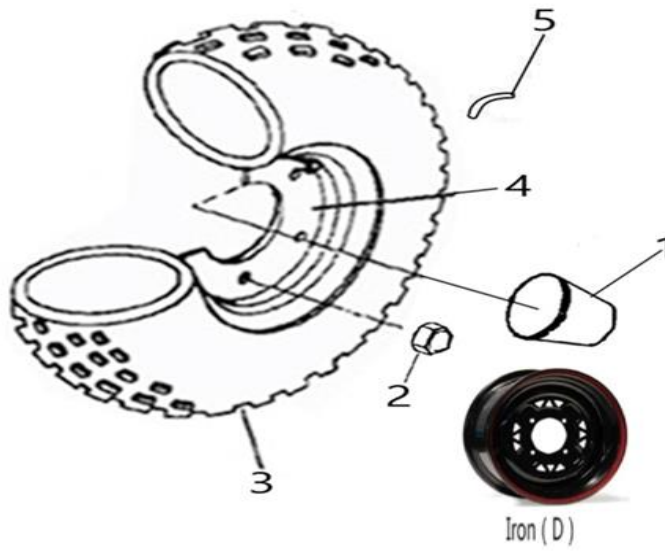
Nº	CÓDIGO	DESCRIÇÃO	Qt.	OBSERVAÇÕES
1	LH00010051	COTTER PIN	2	
2	LH00011817	NUT SLOTTED M20X2	2	
3	LH00021017	WASHER	2	
4	LH00021018	WHEEL HUB	2	
5	LH00025716	WHEEL STUD M12X1.25X45	8	
6	LH00025102	REAR AXLE (FOR EUROPE AND PARKING SYSTEM I)	1	
7	LH00020902	CUSHION PAD	2	
8	LH00020903	SPACER-BEARING	1	
9	LH00011041	O-RING	2	
10	LH00025717	REAR GEAR BOX	1	
11	LH00020901	O-RING	1	
12	LH00010045	BOLT M12X30	8	
13	LH00020705	SKID PLATE REAR	1	
14	LH00011208	BOLT M8X12	3	
15	LH00011818	BOLT M12X35	4	
16	LH00010001	SCREW M5X12	6	
17	LH00022235	BRAKE LINE CLAMP SMALL	1	
18	LH00022236	BRAKE LINE CLAMP LARGE	1	
19	LH00020715	CAP SWINGARM PIVOT	2	
20	LH00020709	SWING ARM PIVOT RIGHT	1	
21	LH00020708	SEAL	2	
22	LH00011012	BEAR	2	
23	LH00020706	SEAL-SWINGARM PIVOT	2	
24	LH00025099	SWINGARM ASSY	1	
25	LH00020717	SWINGARM PIVOT LEFT	1	
26	LH00020710	THREADED PIVOT	1	
27	LH00025718	AXLE TUBE AND HITCH ASSEMBLY	1	
28	LH00021004	RING RETAINER INT	1	
29	LH00021005	SPACER	1	
30	LH00010808	BEARING BALL DBL SEAL	2	
31	LH00026264	RING RETAINER INT	1	
32	LH00031008	SPACER-BEARING	1	
33	LH00031024	BRAKE HOSE COVER	1	
34	LH00021009	SEAL REAR AXLE	1	
35	LH00010048	BOLTS M10X1.25X20	3	
36	LH00032115	REAR DISC BRAKE	1	
37	LH00011040	O-RING	1	
38	LH00021012	HUB BRAKE DISC MACH	1	
39	LH00010050	NUT M10X1.25	3	
40	LH00010031	NUT M12	3	
41	LH00010054	WASHER 12	12	
42	LH00011488	WASHER 12	12	
44	LH00025663	CAP SWINGARM PIVOT (RIGHT)	1	

B8 WHEEL FRONT (T3 EFI)



Nº	CÓDIGO	DESCRIÇÃO	Qt.	OBSERVAÇÕES
1	LH0020809R	WHEEL FRONT (IRON AND BLACK WITH RED)	2	
2	LH00020808	TIRE FRONT (MARK IN "DURO"274)	2	
7	LH00020807	VALVE.RIM (PVR70) (FOR IRON WHEEL)	4	
8	LH00070721	BOLT SLOTTED	4	
9	LH00070722	WASHER	2	
10	LH00026267	PIN 4X32	2	
11	LH00011510	LUG NUT M10X1.25 (BLACK FOR IRON)	8	
12	LH00070717	CAP, WHEEL CENTER	2	

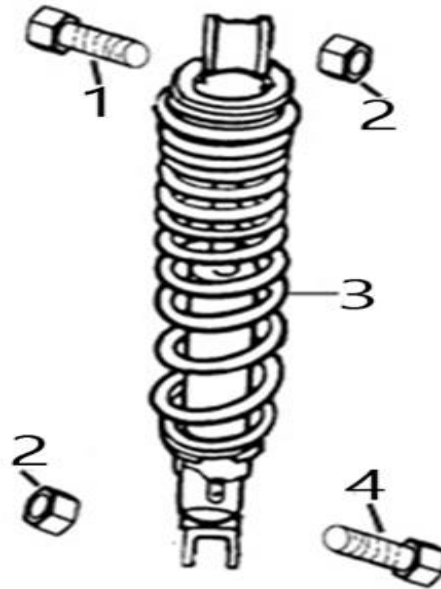
B9 WHEEL REAR (T3 EFI)



Nº	CÓDIGO	DESCRIÇÃO	Qt.	OBSERVAÇÕES
1	LH00021014	AXLE CAP	2	
2	LH00021019	LUG NUT M12X1.25	8	
3	LH00031020	TIRE REAR (MARK IN "DURO"274)	2	
4	LH0021022R	WHEEL REAR (IRON AND BLACK WITH RED)	2	
5	LH00020807	VALVE.RIM (PVR70) (FOR IRON WHEEL)	4	

LH 320 PROMAX EFI 4x4

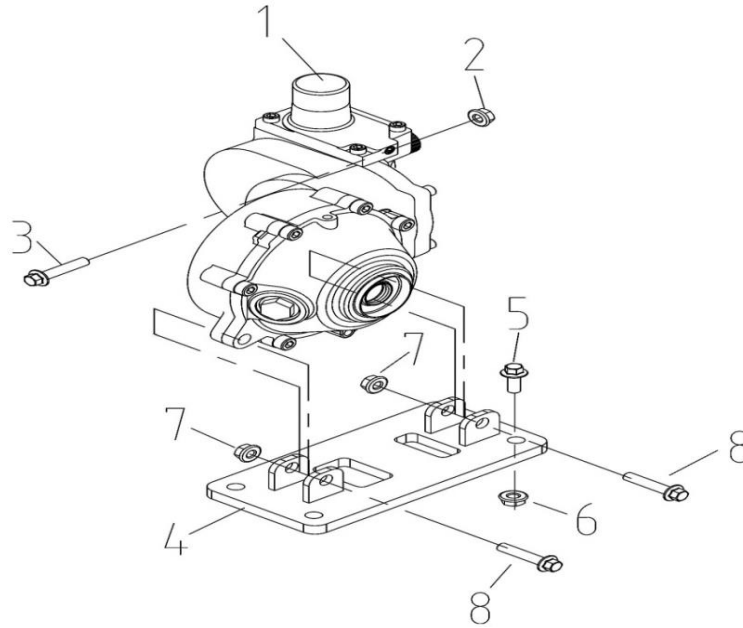
B10 SHOCK ABSORBER REAR (T3 EFI)



Nº	CÓDIGO	DESCRIÇÃO	Qt.	OBSERVAÇÕES
1	LH0020906	UP BOLT M10X1.25X57	1	
2	LH00010015	NUT M10X1.25	2	
3	LH00025104	SHOCK ABSORBER REAR	1	
4	LH00020909	DOWN BOLT M10X1.25X60	1	

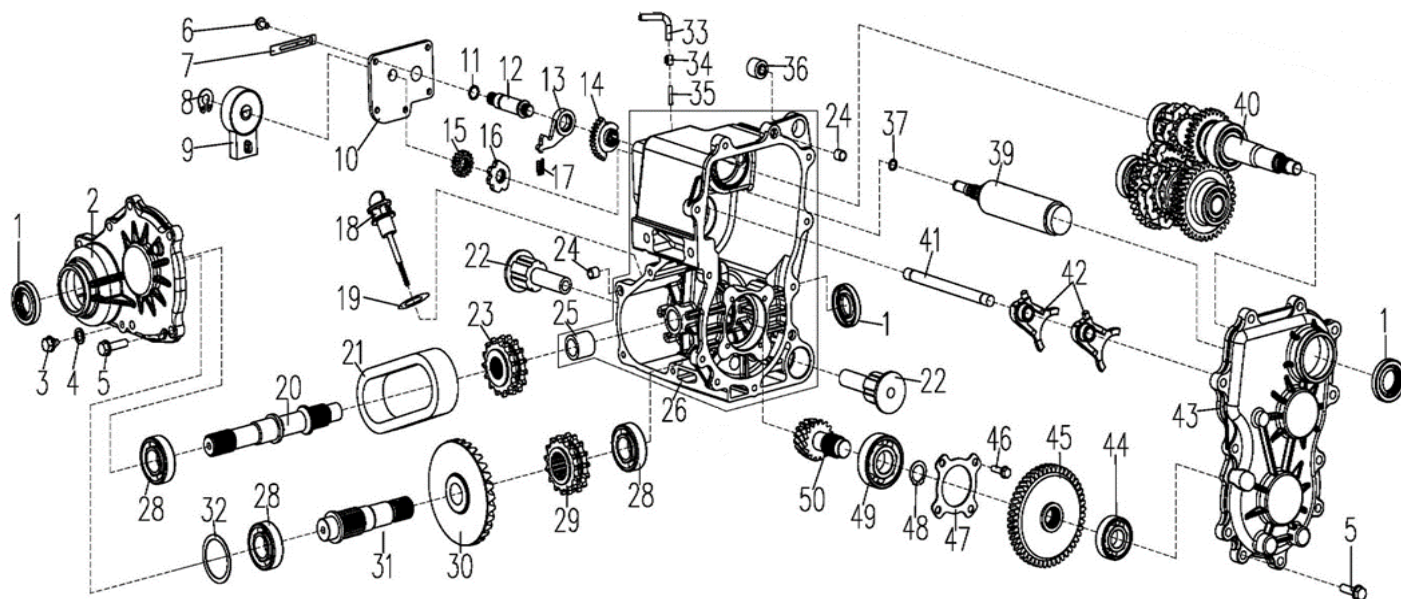
LH 320 PROMAX EFI 4x4

B11 FRONT GEAR-BOX BRACKET (T3 EFI) (FOR 4WD)



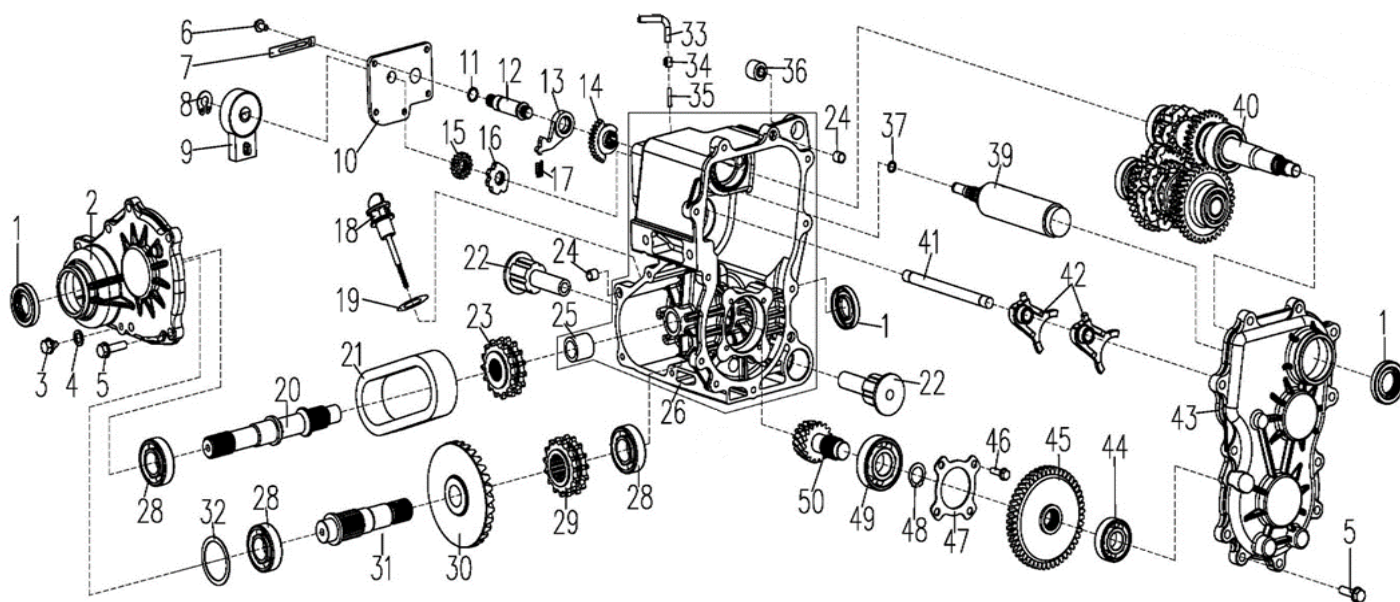
Nº	CÓDIGO	DESCRIÇÃO	Qt.	OBSERVAÇÕES
1	LH0024445a	FRONT GEAR-BOX	1	
2	LH00011541	NUT M8	1	
3	LH00011462	BOLT M8x55	1	
4	LH00024438	FRONT GEAR-BOX BACKSTOP	1	
5	LH00011823	BOLT M10x1.25x20	4	
6	LH00010015	NUT M10x1.25	4	
7	LH00011114	NUT M10x1.25	2	
8	LH00070073	BOLT M10x1.25x50	2	

B12 TRANSMISSION (4WD)



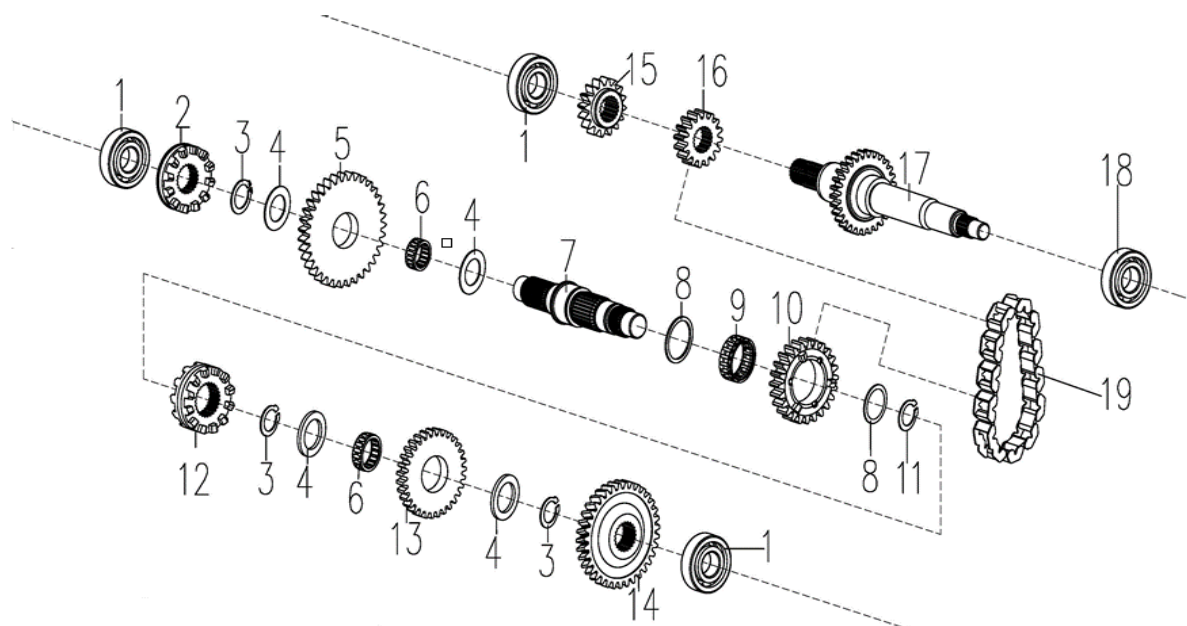
Nº	CÓDIGO	DESCRIÇÃO	Qt.	OBSERVAÇÕES
1	LH00021201	SEAL 25X47X8	3	
2	LH0021468t	FRONT COVER	1	
3	LH00021469	DRAIN SCREW	1	
4	LH00021470	WASHER	1	
5	LH00010060	BOLT M8X28	14	
6	LH00011495	BOLT M6X16	5	
7	LH00035247	CABLE CLAMP	1	
8	LH00010767	CIRCLIP 11	1	
9	LH00025796	GEAR SHIFT COMPONENT	1	
10	LH00084002	SHIFT COVER	1	
11	LH00010737	O-RING 13.2X1.8	1	
12	LH00025724	SHAFT, GEAR SHIFT	1	
13	LH00084004	STOP SWING LEVER, GEAR SHIFT	1	
14	LH00084008	DRIVE GEAR, GEAR SHIFT	1	
15	LH00084006	DRIVEN GEAR, GEAR SHIFT	1	
16	LH00025725	CAMSHAFT, GEAR SHIFT	1	
17	LH00084003	SPRING	1	
18	LH00025797	DIPSTICK	1	
19	LH00010122	O-RING 18X2.65	1	
20	LH00021480	SHAFT FRONT OUTPUT	1	
21	LH00025727	CHAIN	1	
22	LH00073768	ENGINE MOUNT BUSHING	2	
23	LH00025728	DRIVEN SPORCKET	1	
24	LH00021104	DOWEL PIN	4	
25	LH00047538	BUSHING	1	
26	LH00025798	GEAR CASE	1	
28	LH00010061	BEARING 6205C3	3	
29	LH00025731	DRIVE SPORCKET	1	
30	LH00021462	REAR DRIVE GEAR	1	
31	LH00025732	REAR OUTPUT SHAFT	1	

B13 TRANSMISSION (4WD)



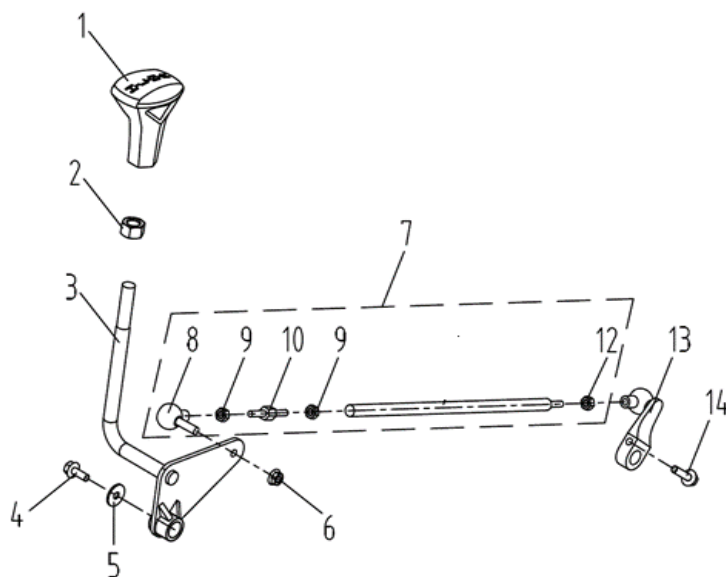
Nº	CÓDIGO	DESCRIÇÃO	Qt.	OBSERVAÇÕES
32	LH00021465	SHIM 1	1	
33	LH00072165	Vent Tube	1	
34	LH00029530	Spring Clip	1	
35	LH00021340	Vent Tube Fitting	1	
36	LH02531555	REAR FLEX SLEEVE	1	
37	LH00021615	O-RING 9.5X1.8	1	
39	LH00025799	DRUM, FORK SHIFT	1	
40		SEE SECTION B13 - MAIN TRANSMISSION ASSEMBLY		
41	LH00025735	GUIDE SHAFT, SHIFT FORK	1	
42	LH00025736	SHIFT FORK	2	
43	LH00025737	LEFT COVER	1	
44	LH00010062	BEARING 6204	1	
45	LH00025656	GEAR HELICAL 46T	1	
46	LH00011819	SCREW M6X10	4	
47	LH00021351	BEARING RETAINER PLATE	1	
48	LH00021453	SNAP RING	1	
49	LH00035468	BEARING 6305	1	
50	LH00021455	PINION SHAFT 10T	1	

B14 MAIN TRANSMISSION ASSEMBLY



Nº	CÓDIGO	DESCRIÇÃO	Qt.	OBSERVAÇÕES
1	LH00010062	BEARING 6204	3	
2	LH00021332	ENGAGEMENT	1	
3	LH00011505	SNAP RING	3	
4	LH00025739	THRUST WASHER 1	4	
5	LH00021329	GEAR 35T	1	
6	LH00021218	NEEDLE BEARING 25	2	
7	LH00025740	SHAFT	1	
8	LH00025741	THRUST WASHER 2	2	
9	LH00021225	NEEDLE BEARING 25	1	
10	LH00021224	SPROCKET 24T	1	
11	LH00011383	SNAP RING	1	
12	LH00021221	DOG GEAR	1	
13	LH00021217	GEAR 31T	1	
14	LH00025655	GEAR, HELICAL 35T	1	
15	LH00021208	GEAR 16T	1	
16	LH00021477	SPROCKET	1	
17	LH00047539	INPUT SHAFT	1	
18	LH00010732	BEARING 5205 C3	1	
19	LH00021207	CHAIN	1	

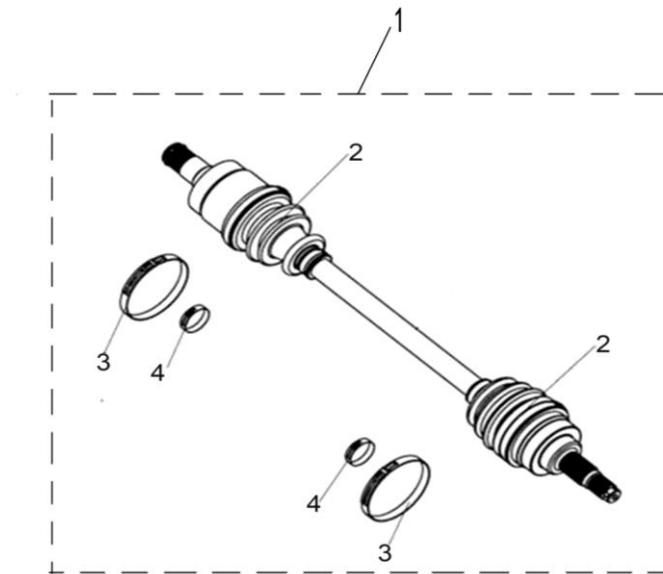
B15 SHIFT ROD (T3 EFI)



Nº	CÓDIGO	DESCRIÇÃO	Qt.	OBSERVAÇÕES
1	LH00025803	KNOB (NEW L-H-N-R)	1	
2	LH00010876	NUT M12	1	
3	LH00025744	SHIFTER ASSY MOUNTING	1	
4	LH0010716W	BOLT M6X10	1	
5	LH00010863	WASHER 6	1	
6	LH00011202	NUT M10	1	
7	LH00025745	SHIFTER MOUNTING ROD	1	
8	LH00021625	SHIFT ROD END CCW	1	
9	LH00010090	JAM NUT M6 CW	2	
10	LH00021619	SHIFT ROD COUPLER	1	
12	LH00021624	JAM NUT CCW	1	
13	LH00025747	SHIFT LEVER	1	
14	LH0010187W	BOLT M6X25	1	

LH 320 PROMAX EFI 4x4

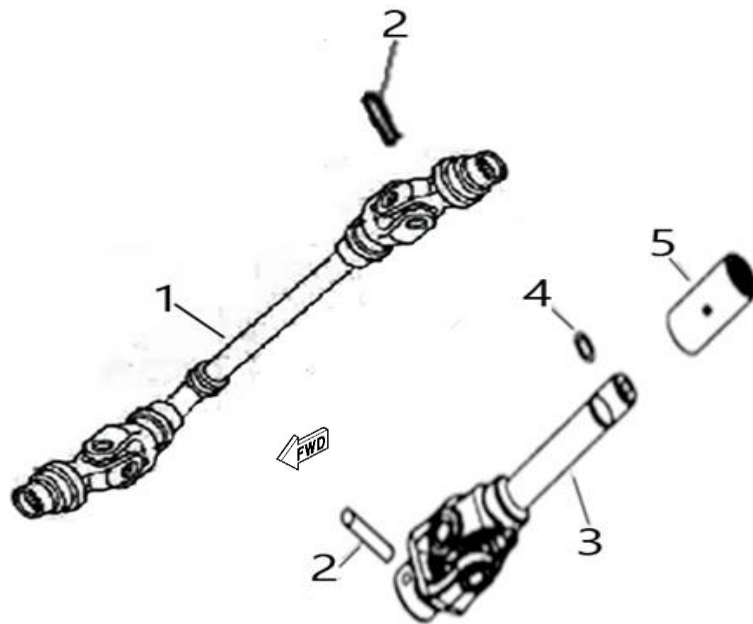
B16 FRONT DRIVE AXLE (T3 EFI) (FOR 4WD)



Nº	CÓDIGO	DESCRIÇÃO	Qt.	OBSERVAÇÕES
1	LH00025748	FRONT DRIVE AXLE	2	
2	LH00024403	OUTER BOARD BOOT	4	
3	LH00024404	BOOT BAND B	4	
4	LH00024402	BOOT BAND A	4	

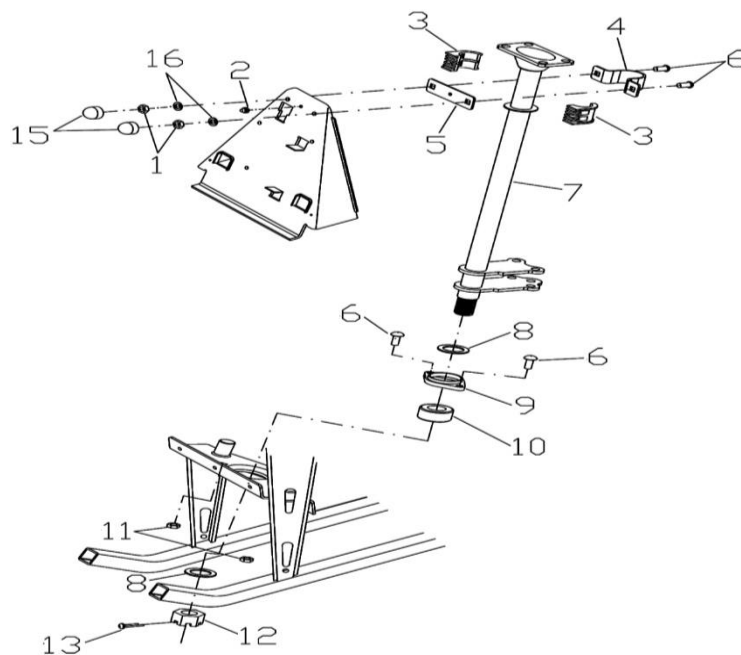
LH 320 PROMAX EFI 4x4

B17 FRONT AND REAR KNUCKLE ASSY (T3 EFI) (FOR 4WD)



Nº	CÓDIGO	DESCRIÇÃO	Qt.	OBSERVAÇÕES
1	LH00025216	FRONT KNUCKLE	1	
2	LH00020716	PIN	2	
3	LH00025749	REAR PROPSHAFT ASSY	1	
4	LH00011837	O-RING	1	
5	LH00020703	COUPLING-PROP SHAFT GREASED	1	

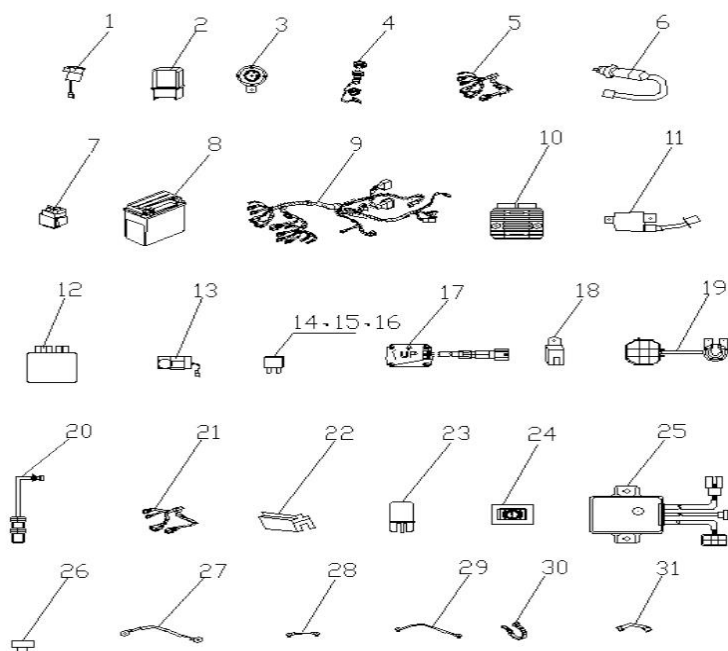
B18 STEERING COLUMN (T3 EFI)



Nº	CÓDIGO	DESCRIÇÃO	Qt.	OBSERVAÇÕES
1	LH00010880	NUT M8	2	
2	LH00010026	GREASE FITTING	1	
3	LH00021903	BUSHING	2	
4	LH00021904	STEERING CLAMP REAR	1	
5	LH00021905	STEERING CLAMP FRONT	1	
6	LH00021906	BOLT	4	
7	LH00319075	STEERING COLUMN	1	
8	LH00021909	WASHER	2	
9	LH00021910	BEARING RETAINER	1	
10	LH00021911	BEARING	1	
11	LH00010880	NUT M8	2	
12	LH00010100	STEERING COLUMN RETAINER NUT	1	
13	LH00011576	COTTER PIN	1	
15	LH00027256	PROTECT COVER	2	
16	LH00011504	SPRING WASHER	2	

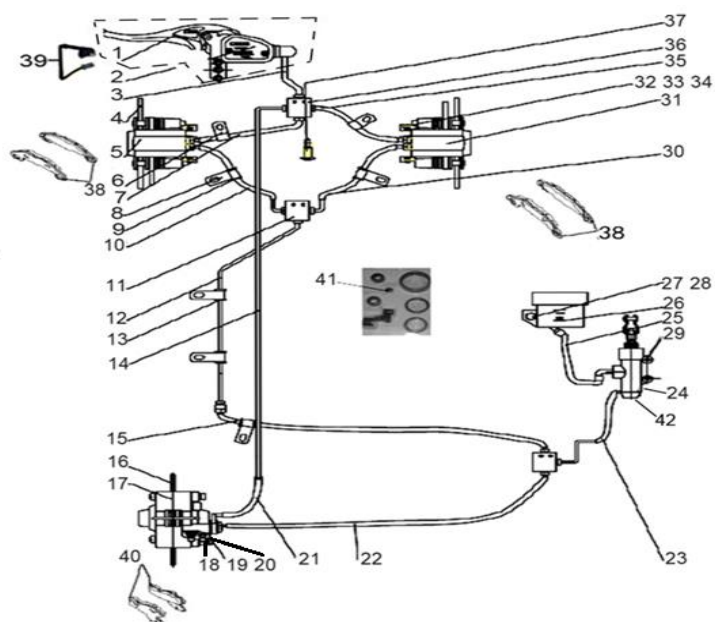
LH 320 PROMAX EFI 4x4

B19 ELECTRICAL SYSTEM (T3 EFI)



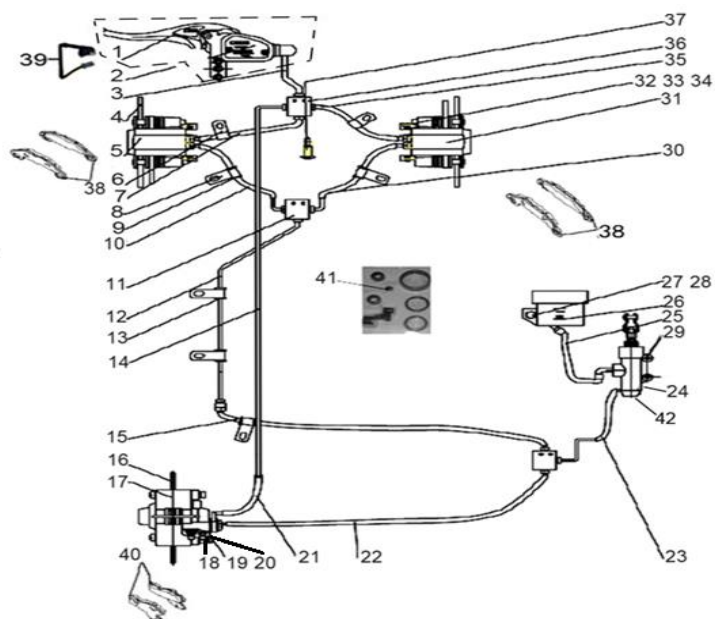
Nº	CÓDIGO	DESCRIÇÃO	Qt.	OBSERVAÇÕES
1	LH00026456	FLASHER RELAY ASSY	1	T3 HOMOLOGATION KIT
1	LH00027438	FLASHER RELAY ASSY	1	ATV HOMOLOGATION
2	LH00071474	EFI RELAY	1	
3	LH00032029	HORN	1	
4	LH00071973	ACCESSORY SOCKET ASSY	1	
5	LH00027682	EFI WIRE (ECU: MT05)	1	
6	LH0070405a	BRAKE SWITCH (USED FOR WATERPROOF PLUG IN UNIT)	1	
7	LH00071602	STARTER RELAY	1	
8	TX20L-BS	BATTERY	1	
9	LH00025750	WIRING HARNESS (FOR T3 EFI)	1	
10	LH00071603	REGULATOR RECTIFIER	1	
11	LH0070822D	IGNITION COIL	1	
12	LH0025360a	ECU (MT05.2)	1	
13	LH00032038	REVERSE GEAR WARNING	1	
14	LH00022020	15 AMP FUSE	3	
15	LH00022021	5 AMP FUSE	1	
16	LH00084273	10 AMP FUSE	2	
17	LH00072278	ELECTRICAL DUMPAGE SWITCH	1	
18	LH00035656	START RELAY	3	
19	LH00084432	TRAILER CONNECTOR	1	
20	LH00025601	GEAR SENSOR 1a	1	
21	LH00037107	GEAR SENSOR HARNESS (USED WITH GEAR SENSOR 1a) (EFI)	1	
22	LH00035907	STARTER RELAY SHIELD	1	
23	LH00050280	OIL PUMP RELAY	1	
24	LH00025298	BRAKE FLUID INDICATOR	1	
25	LH00025436	2WD/4WD MOTOR CONTROLLER	1	
26	LH00026272	PROTECTOR	2	
27	LH00025751	Starting motor positive line	1	
28	LH00025752	BATTERY CABLE POSITIVE	1	
29	LH00025753	BATTERY CABLE GROUND	1	
30	LH00072301	TIE	20	
31	LH00022018	BATTERY BELL	1	

B20 BRAKING SYSTEM (T3 EFI)



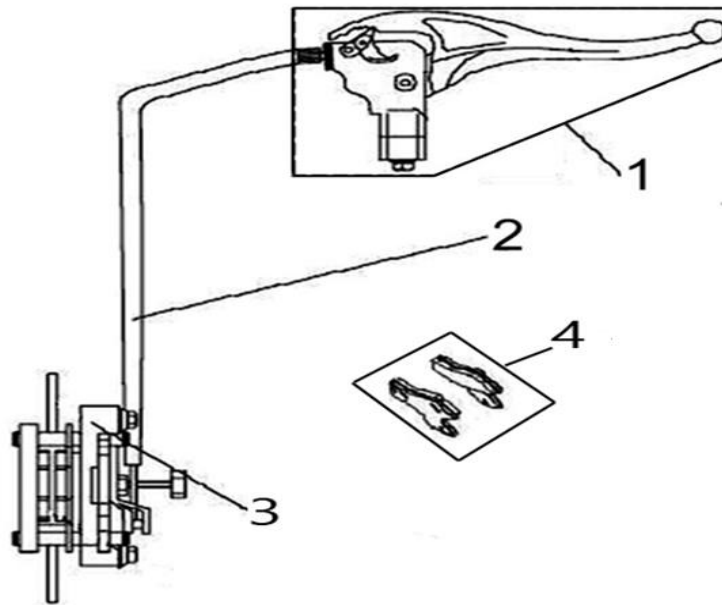
Nº	CÓDIGO	DESCRIÇÃO	Qt.	OBSERVAÇÕES
1	LH02211120	BRAKE LEVER L	1	
2	LH00022101	MASTER CYLINDER	1	
3	LH00022102	HAND BRAKE HOSE	1	
4	LH00025754	FRONT BRAKE DISC	2	
5	LH00025755	FRONT BRAKE CALIPER, LEFT	1	
6	LH00021811	CLAMP	2	
7	LH00022229	FRONT BRAKE HOSE 2	1	
8	LH00032104	CLAMP	5	
9	LH00032105	RUBBER TUBE1	3	
10	LH00025269	FRONT BRAKE HOSE1	1	
11	LH00025270	BRAKE LINE COUPLER	2	
12	LH00032108	TUBE, DISC BRAKE FRONT	1	
13	LH00032109	RUBBER TUBE2	2	
14	LH00022103	REAR BRAKE HOSE	1	
15	LH00025121	FRONT BRAKE HOSE	1	
16	LH00032115	REAR DISC BRAKE	1	
17	LH00022105	REAR BRAKE CALIPER	1	
18	LH00025411	BOLT M10X1.25X83	2	
19	LH00010015	NUT M10X1.25	2	
20	LH00011486	WASHER 10	2	
21	LH00025240	REAR BRAKE HOSE 2	1	
22	LH00025242	REAR BRAKE HOSE 3	1	
23	LH00025122	FOOT BRAKE HOSE	1	
24	LH00025265	REAR BRAKE CYLINDER	1	
25	LH00025262	RESERVOIR HOSE	1	
26	LH00025299	RESERVOIR	1	
27	LH00011563	NUT M5	1	
28	LH00011046	BOLT M5X12	1	
29	LH00011459	BOLT M6X20	2	
30	LH00025225	FRONT BRAKE HOSE2	1	

B21 BRAKING SYSTEM (T3 EFI)



Nº	CÓDIGO	DESCRIÇÃO	Qt.	OBSERVAÇÕES
31	LH00025756	FRONT BRAKE CALIPER, RIGHT	1	
32	LH00025420	BOLT M8X25	4	
33	LH00011490	WASHER 8	4	
34	LH00011557	WASHER 8	4	
35	LH00022228	FRONT BRAKEHOSE 1	1	
36	LH00022230	BRAKE LINECOUPLER	1	
37	LH00025423	SCREW M5X15	6	
38	LH00022245	FRONT BRAKE PADS SET	2	
39	LH00048323	STOP SWITCH FRONT	1	
40	LH00022111	REAR BRAKE PADS SET	1	
41	LH00032252	ZJ E2 Service Kit (FOR EUROPE)	1	
42	LH00035868	FOOT BRAKE PUMP CONNECTION BOLT	1	

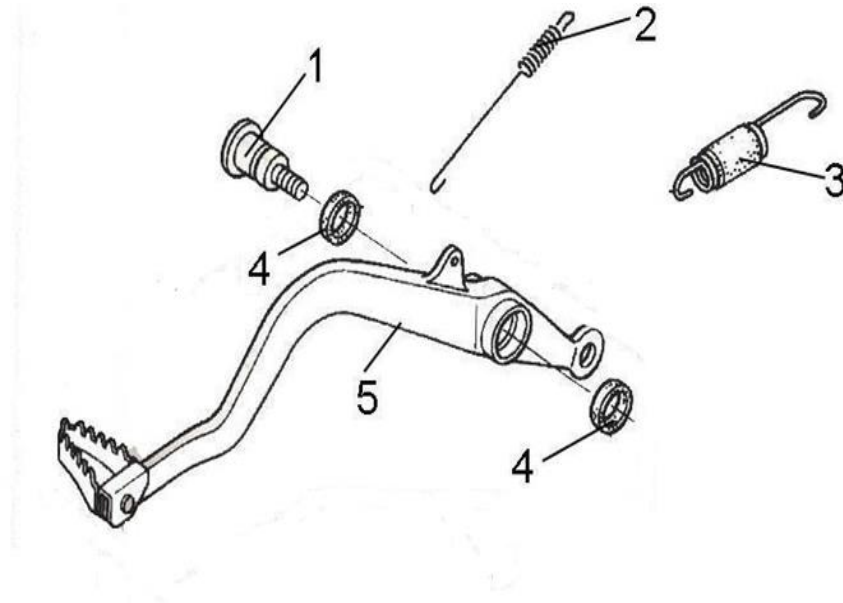
B22 AUXILIARY BRAKE (T3 EFI)



Nº	CÓDIGO	DESCRIÇÃO	Qt.	OBSERVAÇÕES
1	LH00070636	MASTER CYLINDER (WITH LEVER)	1	
2	LH00025138	BRAKE CABLE	1	
3	LH00025139	BRAKE CALIPER	1	
4	LH00025141	INSIDE AND OUTSIDE PAD	1	

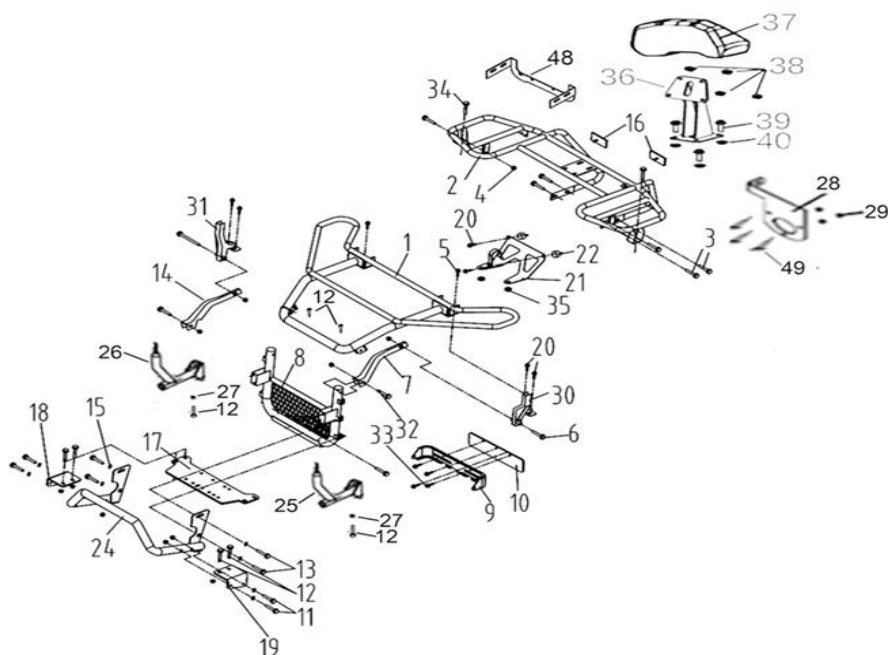
LH 320 PROMAX EFI 4x4

B23 PEDAL, BRAKE (T3 EFI)



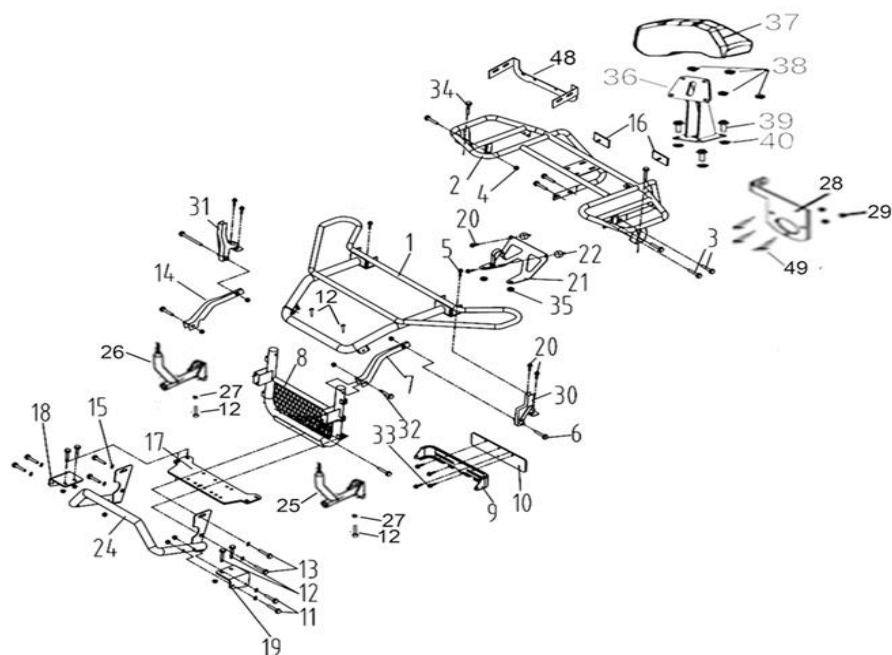
Nº	CÓDIGO	DESCRIÇÃO	Qt.	OBSERVAÇÕES
1	LH00070457	SHAFT, BRAKE PIVOT	1	
2	LH00032246	SPRING, STOP SWITCH	1	
3	LH00023408	SPRING ASSY	1	
4	LH00070460	DUST SEAL	2	
5	LH00025146	PEDAL BRAKE	1	

B24 BUMPER AND RACK



Nº	CÓDIGO	DESCRIÇÃO	Qt.	OBSERVAÇÕES
1	LH00038210	FRONT RACK	1	
2	LH00025654	REAR RACK	1	
3	LH00011101	BOLTM8X45	4	
4	LH00010882	NUT M8	18	
5	LH00011102	BOLT M8X25	4	
6	LH00011103	BOLT M8X85	2	
7	LH00027440	TRESTLE 1 LEFT	1	
8	LH00027441	BUMPER BRACKET	1	
9	LH00020413	DOWN BRACKET RADIATOR	1	
10	LH00020414	SPACER RUBBER	1	
11	LH00010780	BOLT M8X55	6	
12	LH00010783	BOLT M8X20	8	
13	LH00010059	BOLT M8X25	6	
14	LH00027442	TRESTLE 1 RIGHT	1	
15	LH00026009	WASHER 8	8	
16	LH00022321	REAR REFLECTOR (RED)	2	
17	LH00035848	BRACKET, PULLING	1	
18	LH00027387	HOLDER, R.PULLIN BRACKET	1	
19	LH00027386	HOLDER, L.PULLIN BRACKET	1	
20	LH00101408	BOLT M6X12	6	
21	LH00027793	UP BRACKET RADIATOR	1	
22	LH00020316	RUBBER PAD	2	
24	LH00027443	FRONT BUMPER	1	
25	LH00025788	FRONT RACK SUPPORT TUBE, L	1	
26	LH00025789	FRONT RACK SUPPORT TUBE, R	1	
27	LH00026009	WASHER 8	2	
28	LH00071070	BRACKET, OUTPUT SOCKET	1	
29	LH00010109	NUT M5	3	
30	LH00025760	TRESTLE L	1	
31	LH00025761	TRESTLE R	1	

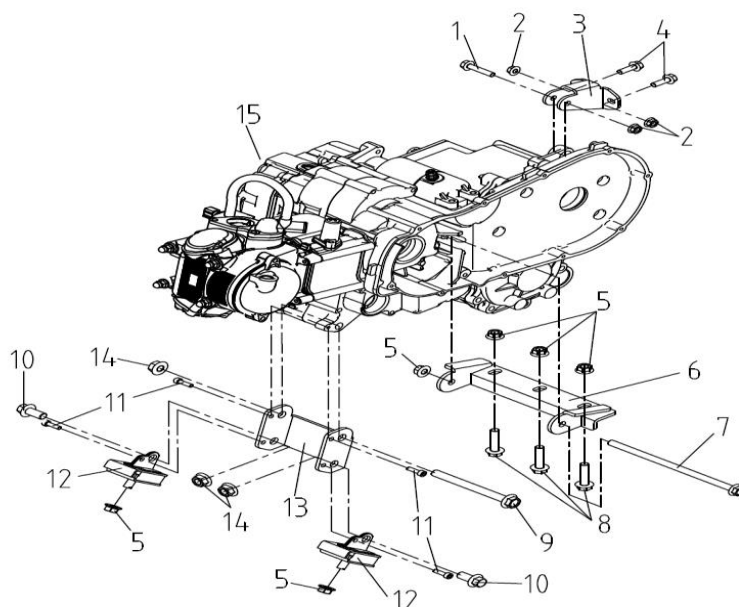
B25 BUMPER AND RACK



Nº	CÓDIGO	DESCRIÇÃO	Qt.	OBSERVAÇÕES
32	LH00010403	BOLT M8X50	2	
33	LH00011539	BOLT M6X25	8	
34	LH00011105	BOLT M6X35	2	
35	LH00022917	RADIATOR SIDE SUPT GROMMET	2	
36	LH00035384	REAR BACKREST WELD ASSEMBLY	1	
37	LH00035721	BACKREST	1	
38	LH00010919	NUT M8	4	
39	LH00010059	BOLT M8X25	4	
40	LH00011455	NUT M8	4	
48	LH00025319	REAR PLATE MOUNTING BRACKET	1	
49	LH00010427	SCREW M5X35	3	

LH 320 PROMAX EFI 4x4

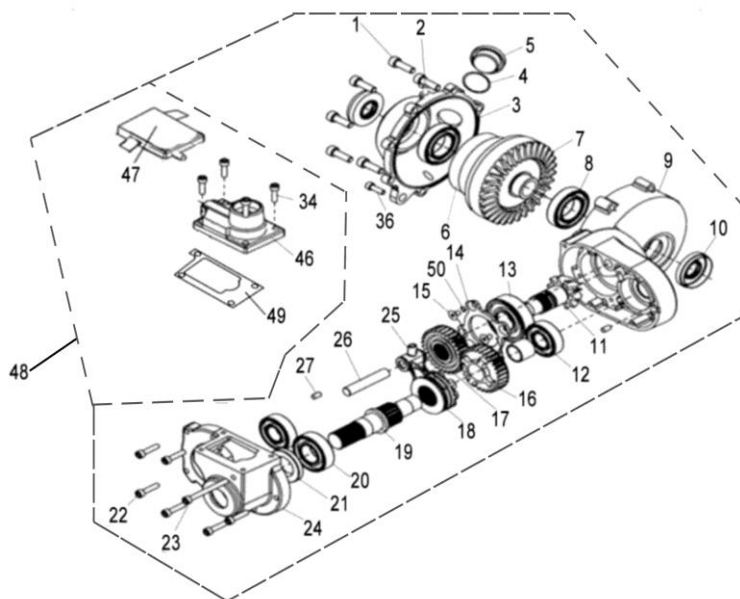
B26 ENGINE ASSY (T3 EFI)



Nº	CÓDIGO	DESCRIÇÃO	Qt.	OBSERVAÇÕES
1	LH00010218	BOLT M8X40	1	
2	LH00010882	NUT M8	3	
3	LH00025764	UP GEARBOX PLATE	1	
4	LH00010059	BOLT M8X25	2	
5	LH0010015A	NUT M10	4	
6	LH00025765	DOWN GEARBOX PLATE	1	
7	LH00011348	BOLT M10X210	1	
8	LH00070011	BOLT M10X50	3	
9	LH00025766	BOLT M12X130	1	
10	LH00011506	BOLT M12X25	2	
11	LH0010008Y	BOLT M6X20	4	
12	LH00035503	ENGINE BUFFER BLOCK	2	
13	LH00025767	FRONT ENGINE PLATE	1	
14	LH00011480	NUT M10	3	
15	LH00025768	ENGINE	1	

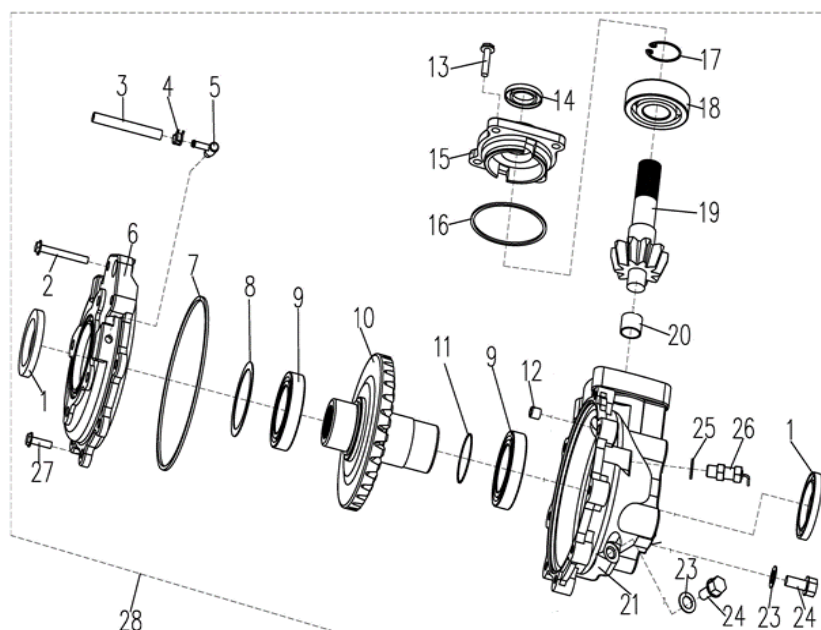
LH 320 PROMAX EFI 4x4

B27 FRONT GEAR-BOX (FOR 4WD)



Nº	CÓDIGO	DESCRIÇÃO	Qt.	OBSERVAÇÕES
1	LH00011499	BOLT M8X25	7	
2	LH00021112	VENT FITTING	1	
3	LH0024303A	LEFT COVER	1	
4	LH00010122	O-RING 18X2.65	1	
5	LH00024305	DIFFERENTIAL FILLER PLUG	1	
6	LH00024306	FOC BODY	1	
7	LH00024307	BEVEL CROWNWHEEL	1	
8	LH00010202	BEAR 6006	2	
9	LH00024309	DIFFCASE RHS	1	
10	LH00024310	SEAL SDD722X48X11	2	
11	LH00024311	CONICAL WITH HELICAL GEARING	1	
12	LH00010062	BEARING 6204	2	
13	LH00010074	BEARING 6305ST	1	
14	LH00024314	CASEBEAR RETAINER	1	
15	LH00010287	SCREW M6X12	4	
16	LH00024316	DIFF GEAR	1	
17	LH00024317	DIFF GEAR DRIVEN	1	
18	LH00024318	SPLINED DOG	1	
19	LH00024319	DIFF INPUTSHAFT A	1	
20	LH00010778	BEARING 6205	1	
21	LH00024321	SEAL TC25X47X7	1	
22	LH00010182	BOLT M6X30	6	
23	LH00011447	BOLT M6X70	1	
24	LH00024324	REAR COVER	1	
25	LH00024325	DIFF SELECTOR FORK	1	
26	LH00024326	SELECTOR RAIL	1	
27	LH00024327	PIN	1	
34	LH00011463	BOLT M6X16	4	
36	LH00011460	BOLT M8X16	1	
46	LH00025435	2WD/4WD SHIFT MOTOR	1	
47	LH00025436	2WD/4WD SHIFT ELECTRONIC CONTROLER (WATER PROOF PLUG)	1	
48	LH0024445a	FRONT GEAR-BOX	1	
49	LH00026005	GASKET	1	
50	LH00021453	CIRCLIP 25	1	

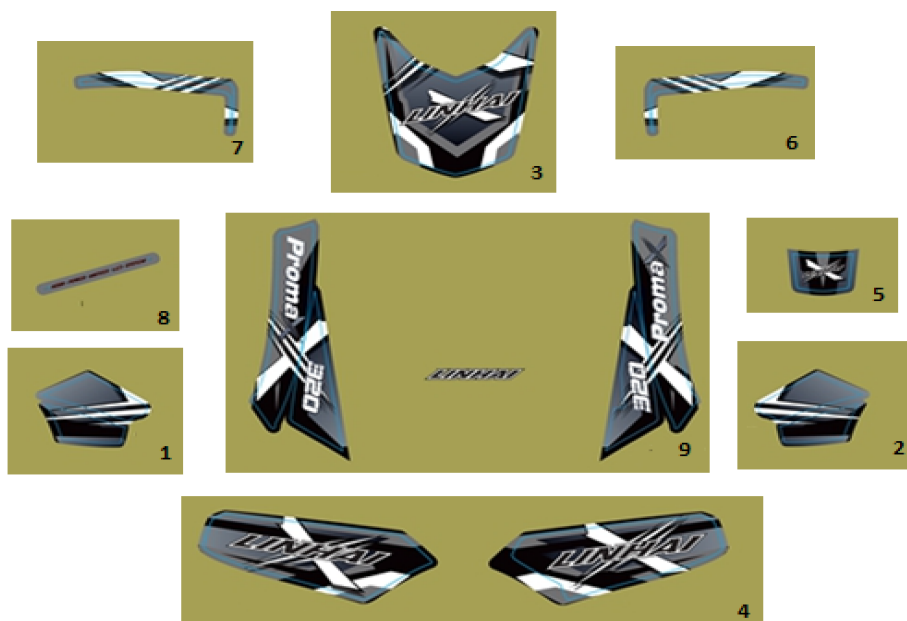
B28 REAR GEAR-BOX



Nº	CÓDIGO	DESCRIÇÃO	Qt.	OBSERVAÇÕES
1	LH00021102	SEAL 50X70X8	2	
2	LH00010055	BOLT M8X45	2	
3	LH00021111	VENT	1	
4	LH00025107	CLAMP	1	
5	LH00021112	BEARING	1	
6	LH00021103	OUTPUT COVER	1	
7	LH00021105	O-RING 176X2.65	1	
8	LH00021106	SHIM	1	
9	LH00010056	BEARING 110	2	
10	LH00021110	RING GEAR	1	
11	LH00025609	O-RING 35.5X3.55	1	
12	LH00021104	DOWEL PIN	1	
13	LH00011499	BOLT M8X25	4	
14	LH00021124	SEAL 25X35X5	1	
15	LH00021122	INPUT COVER	1	
16	LH0020901A	O-RING 79X2.65	1	
17	LH00021120	RETAINER 30	1	
18	LH00010809	BEARING 6306ST	1	
19	LH00021118	PINION SHAFT	1	
20	LH00010057	BUSHING P23X20X15	1	
21	LH00025769	DRIVE HOUSING	1	
23	LH00021115	WASHER	2	
24	LH00021114	OIL PLUG	2	
25	LH00083462	WASHER	1	
26	LH00025771	SPEED SENSOR	1	
27	LH00010060	BOLT M8X28	6	
28	LH00025717	REAR GEARBOX ASSY	1	

LH 320 PROMAX EFI 4x4

B29 STICKER (GREY MODEL)



Nº	CÓDIGO	DESCRIÇÃO	Qt.	OBSERVAÇÕES
1	LH80719CL	AUTOCOLANTE CARENAGEM CENTRAL ESQUERDA	1	
2	LH80719CR	AUTOCOLANTE CARENAGEM CENTRAL DIREITA	1	
3	LH80719FFC	AUTOCOLANTE CARENAGEM DIANTEIRA CENTRAL	1	
4	LH80719FT	AUTOCOLANTE CARENAGEM DIANTEIRA/DEPÓSITO	1	
5	LH80719HBC	AUTOCOLANTE CARENAGEM GUIADOR CENTRAL	1	
6	LH80719HGL	AUTOCOLANTE PROTEÇÃO GUIADOR ESQUERDO	1	
7	LH80719HGR	AUTOCOLANTE PROTEÇÃO GUIADOR DIREITO	1	
8	LH80500HLI	AUTOCOLANTE FAROL DIANTEIRO	2	
9	84013	AUTOCOLANTE CARENAGEM TRASEIRA	1	

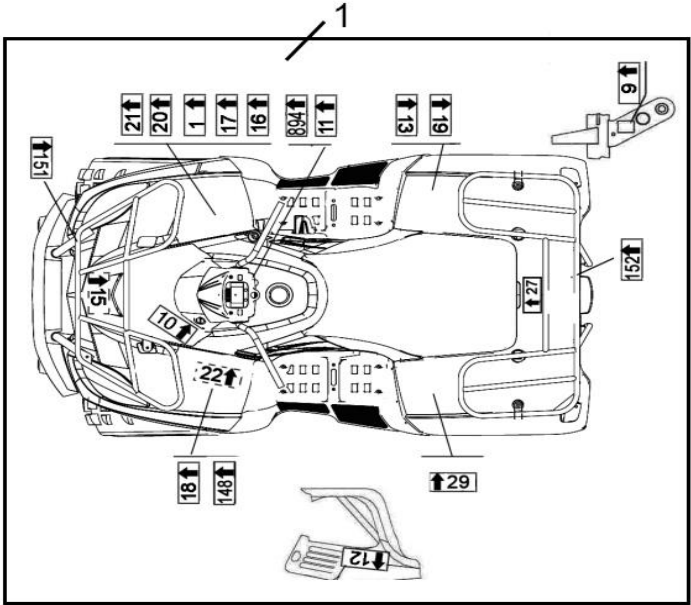
LH 320 PROMAX EFI 4x4

B30 STICKER (RED AND BLACK MODEL)



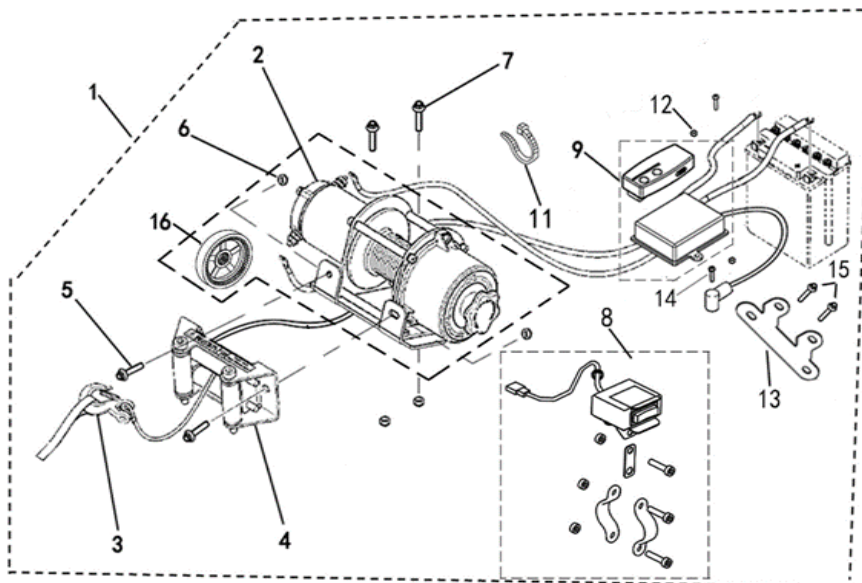
Nº	CÓDIGO	DESCRIÇÃO	Qt.	OBSERVAÇÕES
1	LH80432CL	AUTOCOLANTE CARENAGEM CENTRAL ESQUERDA	1	
2	LH80432CR	AUTOCOLANTE CARENAGEM CENTRAL DIREITA	1	
3	LH80500FFC	AUTOCOLANTE CARENAGEM DIANTEIRA CENTRAL	1	
4	LH80720FT	AUTOCOLANTE CARENAGEM DIANTEIRA/DEPÓSITO	1	
5	LH80500HBC	AUTOCOLANTE CARENAGEM GUIADOR CENTRAL	1	
6	LH80500HGL	AUTOCOLANTE PROTEÇÃO GUIADOR ESQUERDO	1	
7	LH80500HGR	AUTOCOLANTE PROTEÇÃO GUIADOR DIREITO	1	
8	LH80500HLI	AUTOCOLANTE FAROL DIANTEIRO	2	
9	LH80720RF	AUTOCOLANTE CARENAGEM TRASEIRA	1	

B31 WARNING DECALS



Nº	CÓDIGO	DESCRIÇÃO	Qt.	OBSERVAÇÕES
1	LH00080463	WARNING DECALS ASSY (T3)	1	

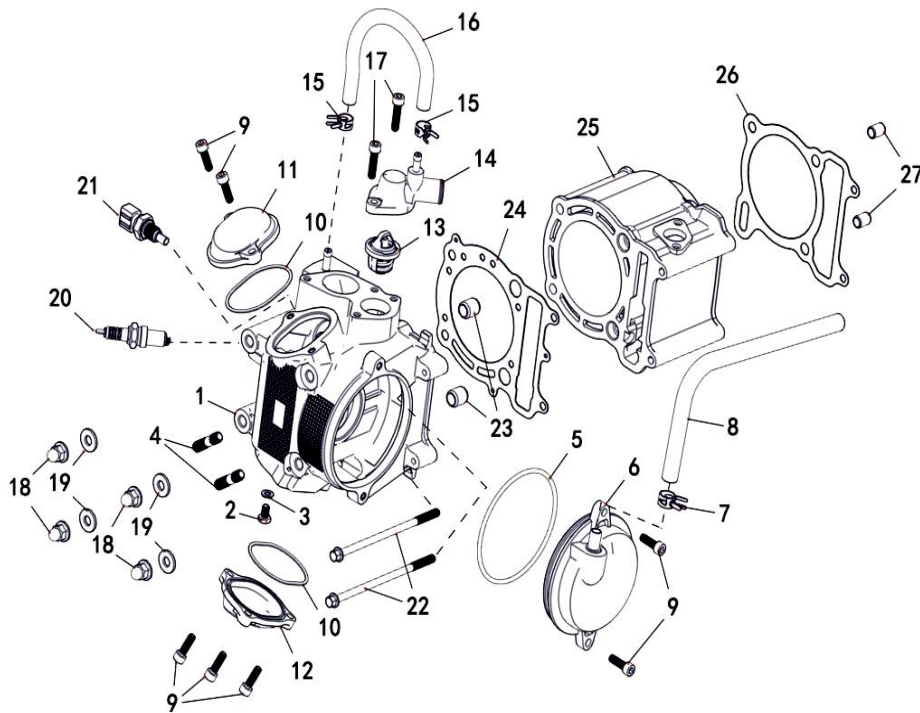
B32 WINCH (ONLY AS AN ACESSORY)



Nº	CÓDIGO	DESCRIÇÃO	Qt.	OBSERVAÇÕES
1	LH00073543	WINCH ASSY	1	
2	LH00073544	WINCH	1	
3	LH00073545	TOW HOOK	1	
4	LH00073546	SLIDEWAY	1	
5	LH00011492	HEXAGON FLANGE BOLT M8×20	2	
6	LH00010794	PREVAILING TORQUE TYPE ALL-METAL HEXAGON NUT M8	4	
7	LH00011466	HEXAGON FLANGE BOLT M8×25	2	
8	LH00036492	SWITCH	1	
9	LH00080483	CONTROLLER W/ REMOTE CONTROL	1	
11	LH00011334	TIE	1	
12	LH00011711	NUT 5	2	
13	LH00037126	CONTROLLER BRACKET (FOR T3 EFI)	1	
14	LH00011640	BOLT M5×25	2	
15	LH00011097	BOLT M6×16 (FOR T3 EFI)	2	
16	LH00080461	PLATE OF WINCH	1	

M210 EFI

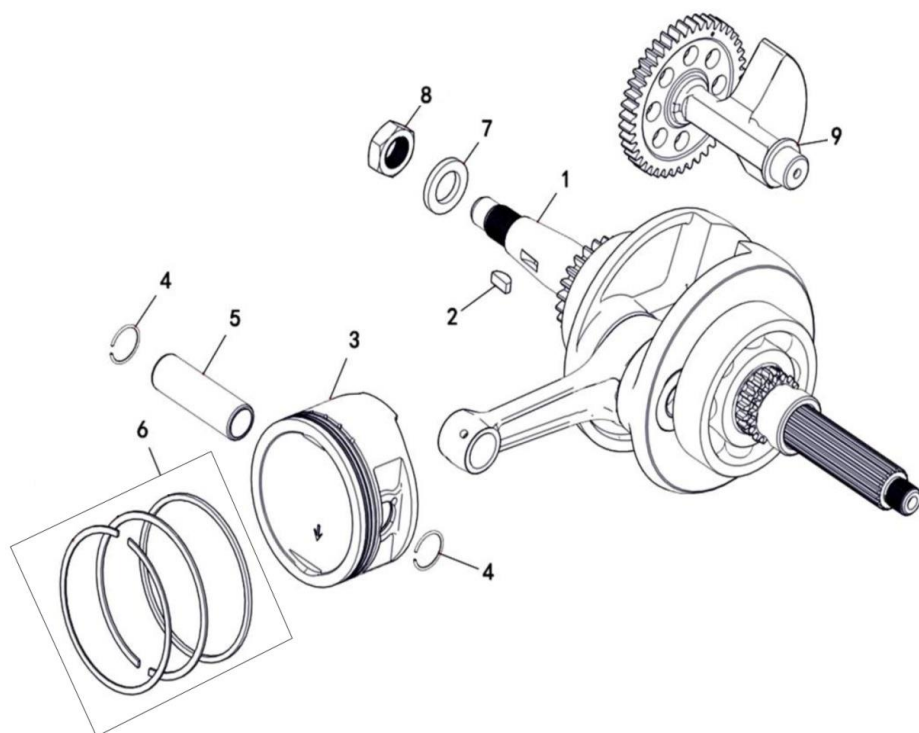
E01 CYLINDER (EFI T3b)



Nº	CÓDIGO	DESCRIÇÃO	Qt.	OBSERVAÇÕES
1	LH00025772	CYLINDER HEAD ASSY	1	
2	LH00011820	BOLT M6X12	1	
3	LH00022810	GASKET 6	1	
4	LH00010014	BOLT STUD M8X25	2	
5	LH00022408	O-RING 95X3.3	1	
6	LH00025604	BREATHER ASSY	1	
7	LH00071358	CLIP 13MM	2	
8	LH00022423	PIPE BREATHER1	1	
9	LH0010008Y	BOLT SOCKET HEAD M6X20	7	
10	LH00022412	O-RING 57.5X2.3	2	
11	LH00022410	VALVE COVER INTAKE SIDE	1	
12	LH00022411	VALVE COVER EXHAUST SIDE	1	
13	LH00022901	THERMOSTAT	1	
14	LH00022902	THERMOSTAT COVER	1	
15	LH00022914	HOSE CLAMP2	2	
16	LH00022915	HOSE1	1	
17	LH00010085	SOCKET HEAD BOLT M6X25	2	
18	LH00022414	NUT CROWN M8	4	
19	LH00022415	WASHER PLATE 8	4	
20	DR8EA	PLUG SPARK	1	
21	LH0035095E	WATER TEMPERATURE SENSOR	1	
22	LH00011596	BOLT FLANGE M6X130	2	
23	LH00022417	PIN DOWEL 14X16	2	
24	LH00025773	GASKET CYLINDER HEAD1	1	
25	LH00025774	CYLINDER	1	
26	LH00022421	GASKET CYLINDER	1	
27	LH00022422	PIN DOWEL 10X14	2	

M210 EFI

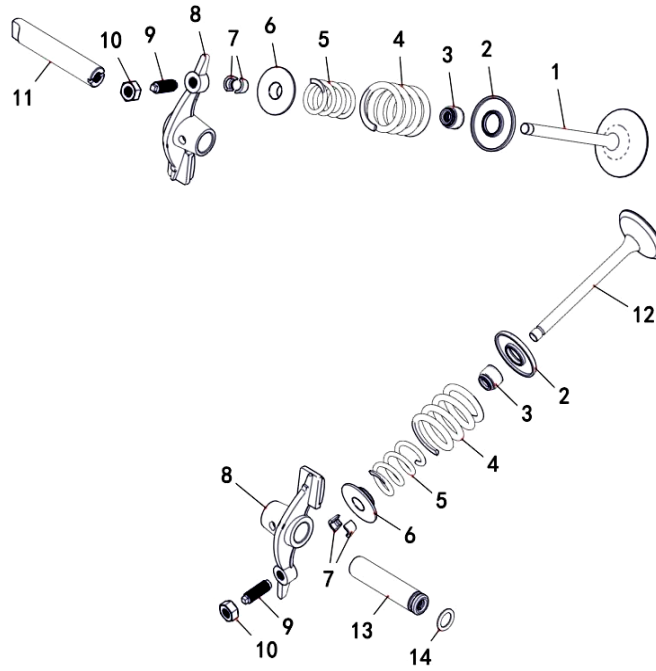
E02 CRANKSHAFT COMP



Nº	CÓDIGO	DESCRIÇÃO	Qt.	OBSERVAÇÕES
1	LH00025775	CRANKSHAFT	1	
2	LH00022504	KEY WOODRUFF	1	
3	LH00025776	PISTON	1	
4	LH00022508	CLIP	2	
5	LH00025777	PISTON PIN	1	
6	LH00025778	PISTON RING ASSY	1	
7	LH00022503	WASHER PLATE 16	1	
8	LH00022502	NUT M16X1	1	
9	LH00025779	BALANCE SHAFT	1	

M210 EFI

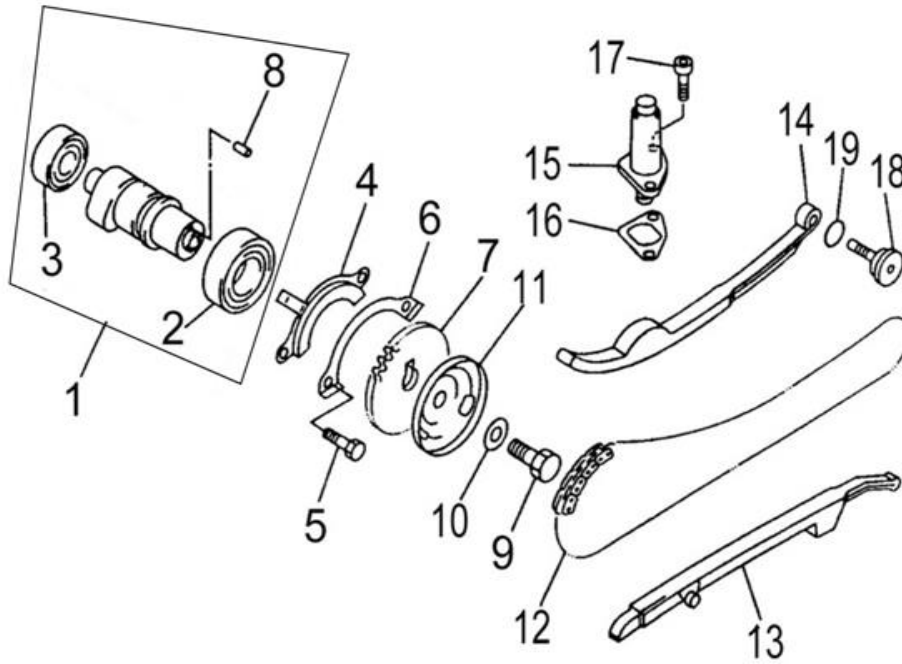
E03 VALVE



Nº	CÓDIGO	DESCRIÇÃO	Qt.	OBSERVAÇÕES
1	LH00022601	INTAKE VALVE	1	
2	LH00022603	SEAT SPRING VALVE	2	
3	LH00022606	SEAL VALVE STEM	2	
4	LH00022605	OUTER VALVE SPRING	2	
5	LH00022604	INNER VALVE SPRING	2	
6	LH00022607	RETAINER SPRING VALVE	2	
7	LH00022608	COTTER VALVE	4	
8	LH00022609	ROCKER ARM VALVE	2	
9	LH00022613	ADJUSTING SCREW VALVE	2	
10	LH00022614	NUT M6X0.75	2	
11	LH00022611	INTAKE ROCKER SHAFT	1	
12	LH00022602	EXHAUST VALVE	1	
13	LH00022610	EXHAUST ROCKER SHAFT	1	
14	LH00022612	O-RING 9X2	1	

M210 EFI

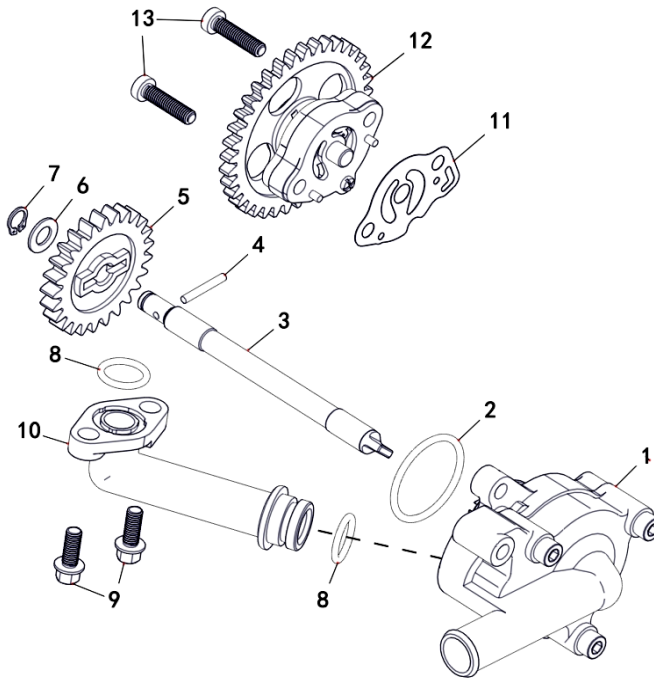
E04 CAMSHAFT



Nº	CÓDIGO	DESCRIÇÃO	Qt.	OBSERVAÇÕES
1	LH00022701	CAMSHAFT ASSY	1	
2	LH00010012	BEARING	1	
3	LH00010013	BEARING (B6202Z)	1	
4	LH00022704	PLATE	1	
5	LH00011626	BOLT M6X12	2	
6	LH00022706	LOCK WASHER	1	
7	LH00022707	CAM CHAIN SPROCKET	1	
8	LH00010024	DOWEL PIN B4X10	1	
9	LH00010025	BOLT M10X1.25X25	1	
10	LH00022710	WASHER PLATE 10	1	
11	LH00022711	BREATHER PLATE	1	
12	LH00022712	CHAIN	1	
13	LH00022713	GUIDE STOPPER1	1	
14	LH00022714	GUIDE STOPPER2	1	
15	LH00022715	CAM CHAIN TENSIONER	1	
16	LH00022716	GASKET TENSIONER CASE	1	
17	LH00010036	SOCKET HEAD BOLT M6X14	2	
18	LH00022718	CHAIN TENSIONER PIVOT BOLT	1	
19	LH00022719	O-RING 14.5X1.8	1	

M210 EFI

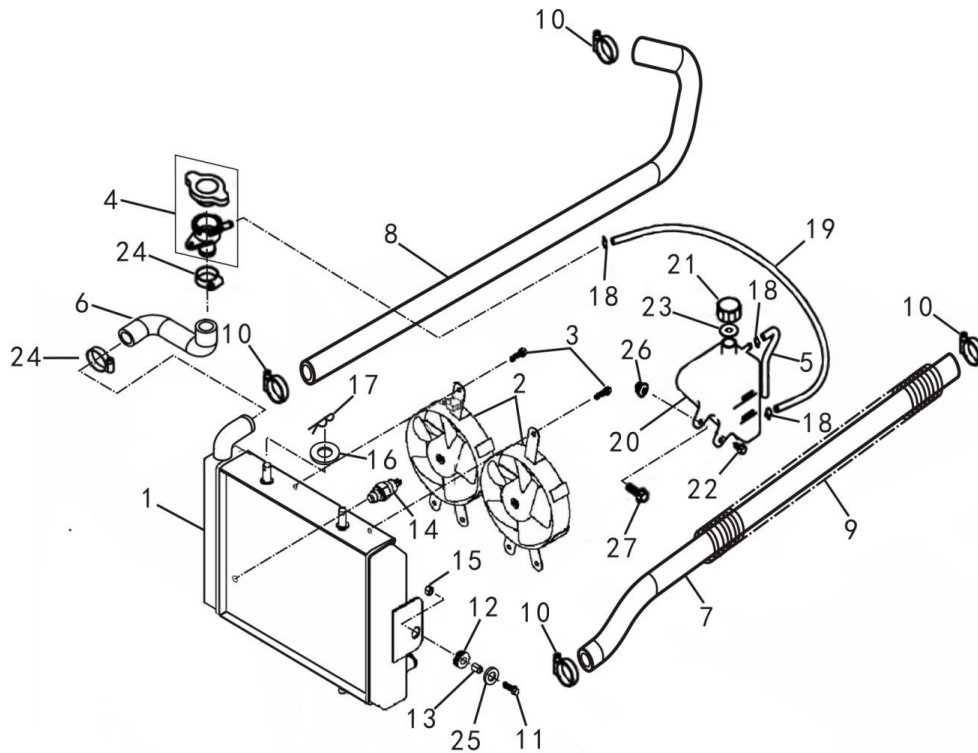
E05 WATER PUMP AND OIL PUMP



Nº	CÓDIGO	DESCRIÇÃO	Qt.	OBSERVAÇÕES
1	LH00022820	WATER PUMP ASSY	1	
2	LH00010049	O-RING 33.5X2.65	1	
3	LH00022812	SHAFT	1	
4	LH00010070	DOWEL PIN C3X22	1	
5	LH00022815	IMPELLER SHAFT GEAR	1	
6	LH00022814	WASHER PLATE 8	1	
7	LH00010072	CIRCLIP 8	1	
8	LH00010082	O-RING 15.5X2.5	2	
9	LH00011821	BOLT M6X15	2	
10	LH0022817a	JOINT (ADC12)	1	
11	LH00023107	GASKET	1	
12	LH00023101	OIL PUMP ASSY	1	
13	LH00011822	SCREW M6X25	2	

M210 EFI

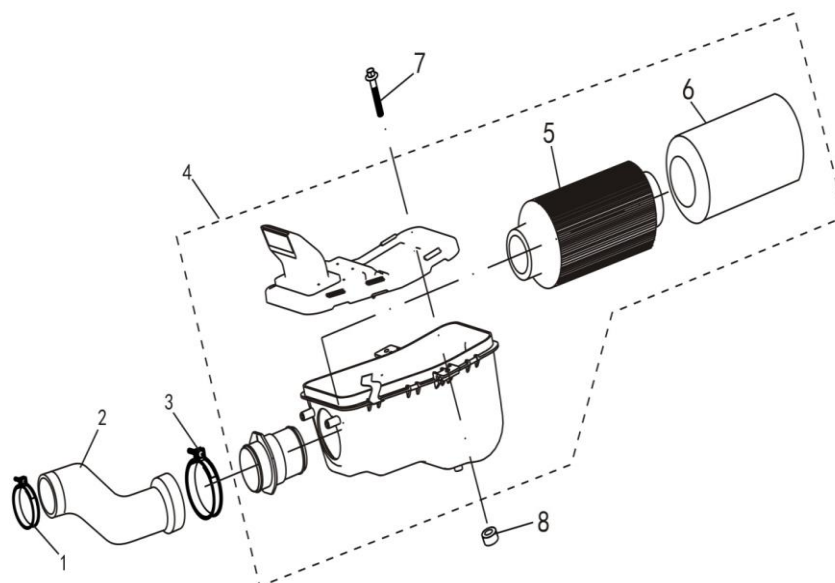
E06 RADIATOR (EFI T3)



Nº	CÓDIGO	DESCRIÇÃO	Qt.	OBSERVAÇÕES
1	LH0022904t	RADIATOR ASSY (THICKER)	1	
2	LH00027451	BLOWER ASSY (WATERPROOF PLUG)	2	
3	LH00011127	FLANGE BOLT M6X9	6	
4	LH0022907a	SAFETY VALVE	1	
5	LH00070341	PIPE 2	1	
6	LH00022909	RADIATOR FILLER HOSE	1	
7	LH00025193	RETURN HOSE	1	
8	LH00022911	FEED HOSE	1	
9	LH0022912A	COMPRESSION SPRING	2	
10	LH00070140	CLAMP 16/27	4	
11	LH0010110W	BOLT M6X20	2	
12	LH00022917	RADIATOR SIDE SUPT GROMMET	2	
13	LH00022918	COLLAR	2	
14	LH00071932	THERMOSTAT SWITCH ASSYUSED (WATERPROOF PLUG)	1	
15	LH00011475	NUT M6	2	
16	LH00010019	WASHER PLATE 10	2	
17	LH00011555	CLIP 2X20	2	
18	LH00022924	CLIP	2	
19	LH00070342	PIPE 1	1	
20	LH00070340	TANK RECOVERY	1	
21	LH00070338	CAP	1	
22	LH0010140W	BOLT FLANGE M6X12	1	
23	LH00070339	WASHER	1	
24	LH00035343	CLAMP 20/32	2	
25	LH00011090	WASHER PLATE6	2	
26	LH00011475	NUT M6	1	
27	LH0010177W	BOLT M6X40	1	

M210 EFI

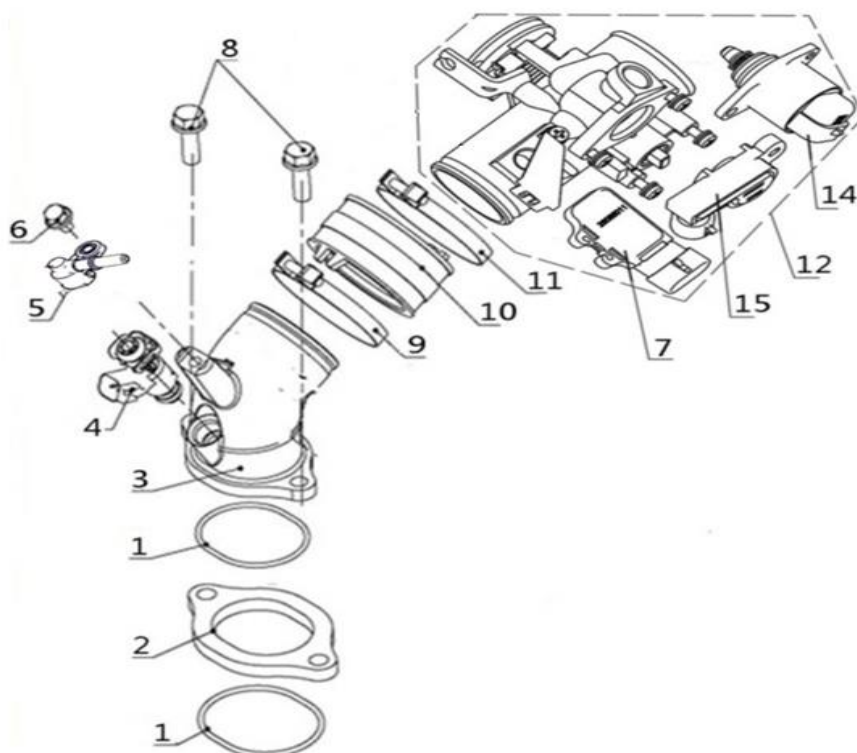
E07 AIR CLEANER (EFI T3)



Nº	CÓDIGO	DESCRIÇÃO	Qt.	OBSERVAÇÕES
1	LH00027695	HOSE CLAMP C	1	
2	LH00027696	AIR CLEANER JOINT	1	
3	LH00023208	HOSE CLAMP B	1	
4	LH00025334	AIR CLEANER ASSY	1	
5	LH00023212	ELEMENT COMP AIR CLEANER	1	
6	LH00023213	FILTER COVER	1	
7	LH0010182B	BOLT M6X30	1	
8	LH00046190	RUBBER WASHER	2	

M210 EFI

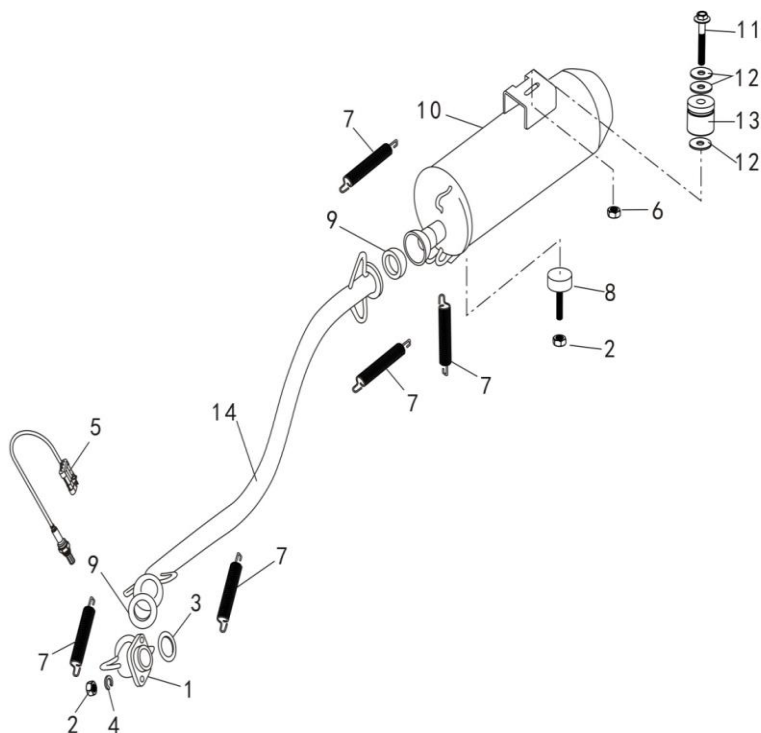
E08 FUEL INJECTION



Nº	CÓDIGO	DESCRIÇÃO	Qt.	OBSERVAÇÕES
1	LH00023202	O-RING 35X2	2	
2	LH00027225	JOINT	1	
3	LH00025780	FEED HOSE	1	
4	LH00027698	INJECTOR	1	
5	LH00038320	INJECTOR CAP	1	
6	LH0010183W	BOLT M6X16	1	
7	LH00025659	TEMPERATURE PRESSURE SENSOR	1	
8	LH00011444	BOLT M6X25	2	
9	LH00027901	CLIP 49	1	
10	LH00027902	JOINT,FEED HOSE	1	
11	LH00027903	CLIP 53	1	
12	LH00027857	THROTTLE BODY ASSEMBLY	1	
14	LH00035930	THROTTLE STEPPER MOTOR	1	
15	LH00025658	THROTTLE POSITION SENSOR	1	

M210 EFI

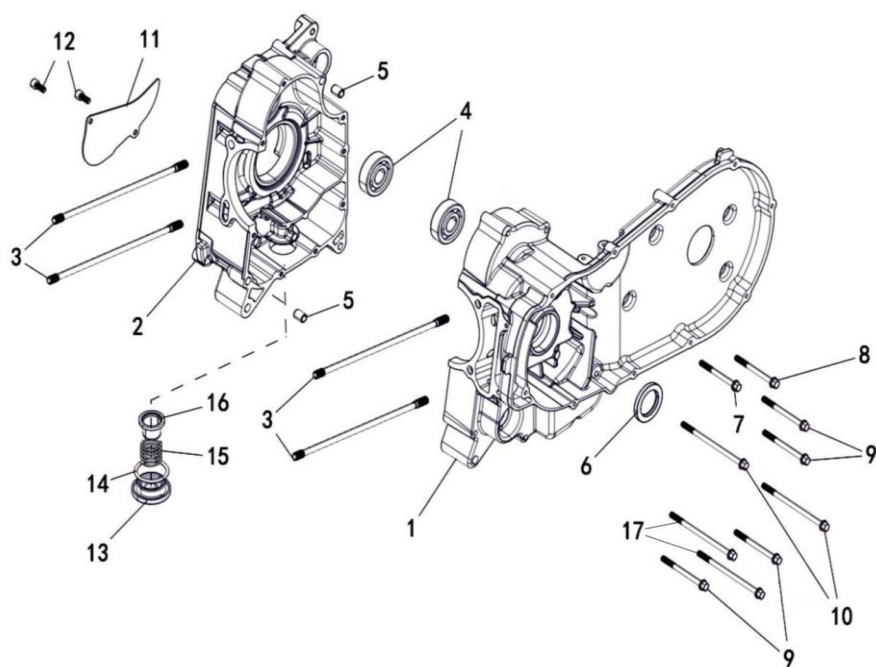
E09 EXHAUST (EFI T3b)



Nº	CÓDIGO	DESCRIÇÃO	Qt.	OBSERVAÇÕES
1	LH00025792	EXHAUST SHORT PIPE	1	
2	LH00011455	NUT M8	4	
3	LH00023403	EXHAUST PIPE GASKET	1	
4	LH00011490	WASHER 8	2	
5	LH00070826	SENSOR	1	
6	LH00011287	NUT M10X1.25	1	
7	LH00023408	SPRING	5	
8	LH00025202	MUFFLER SUPPORT BOTTOM	1	
9	LH00027911	JOINT	2	
10	LH00025203	MUFFLER	1	
11	LH0010120d	BOLT FLANGE M10X1.25X62	1	
12	LH00011035	WASHER PLATE 10	2	
13	LH00035344	MUFFLER SUPPORT	1	
14	LH00025793	EXHAUST LONG PIPE	1	

M210 EFI

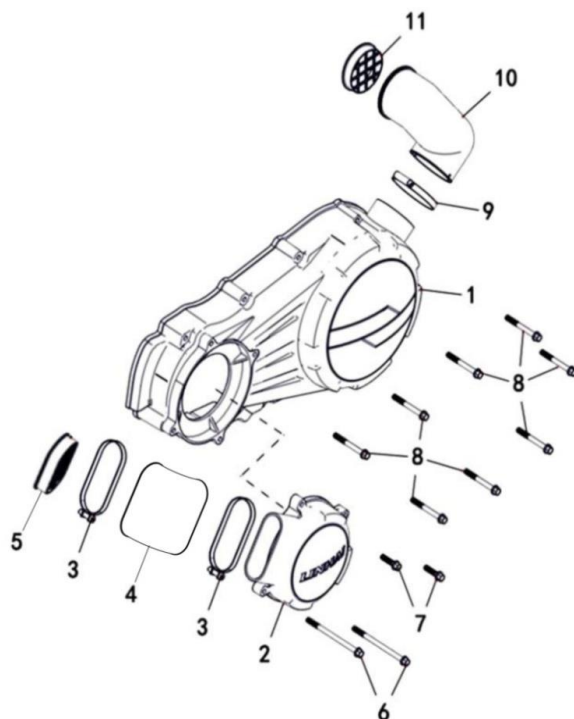
E10 CRANKCASE



Nº	CÓDIGO	DESCRIÇÃO	Qt.	OBSERVAÇÕES
1	LH00025781	LEFT CRANKCASE	1	
2	LH00025782	RIGHT CRANKCASE	1	
3	LH00023511	STUD BOLT M8X253.6	4	
4	LH00010846	BEARING 6303C3	2	
5	LH00022422	PIN DOWEL 10X14	2	
6	LH00023510	OIL SEAL 30X45X5	1	
7	LH00011587	FLANGE BOLT M6X60	1	
8	LH00011824	FLANGE BOLT M6X65	1	
9	LH00011825	FLANGE BOLT M6X70	4	
10	LH00011826	FLANGE BOLT M6X100	2	
11	LH00023512	COVER CRANKCASE RIGHT	1	
12	LH00011827	SOCKET HEAD BOLT M6X14	2	
13	LH00023111	DRAIN PLUG	1	
14	LH00023112	O-RING 36X3.5	1	
15	LH00023110	COMPRESSION SPRING	1	
16	LH00023109	OIL STRAINER	1	
17	LH00011828	FLANGE BOLT M6X105	2	

M210 EFI

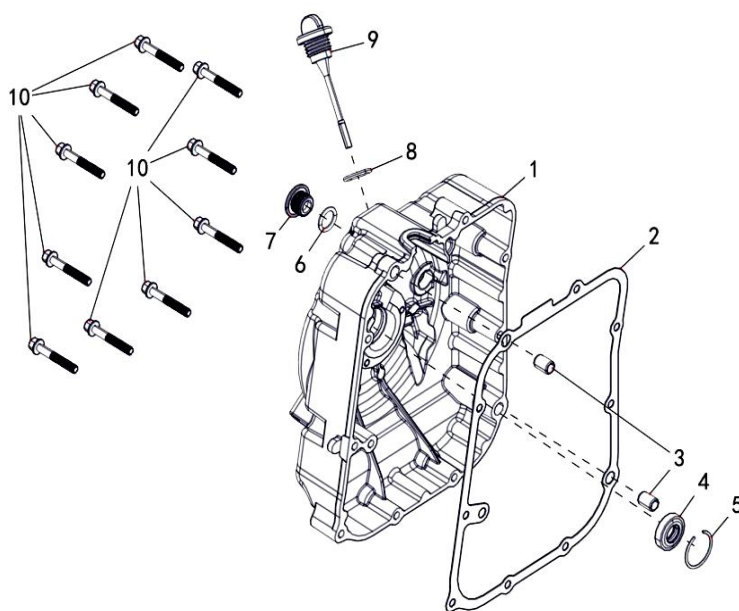
E11 LEFT COVER



Nº	CÓDIGO	DESCRIÇÃO	Qt.	OBSERVAÇÕES
1	LH00047525	LEFT CRANKCASE COVER	1	
2	LH00047526	FRONT COVER	1	
3	LH00023608	HOSE CLAMP A	1	
4	LH00025783	JOINT B	1	
5	LH00023606	AIR STRAINER A	1	
6	LH00011007	FLANGE BOLT M6X95	2	
7	LH00011539	FLANGE BOLT M6X25	2	
8	LH00010918	FLANGE BOLT M6X55	8	
9	LH00023603	HOSE CLAMP B	1	
10	LH00023604	JOINT A	1	
11	LH00023605	AIR STRAINER B	1	

M210 EFI

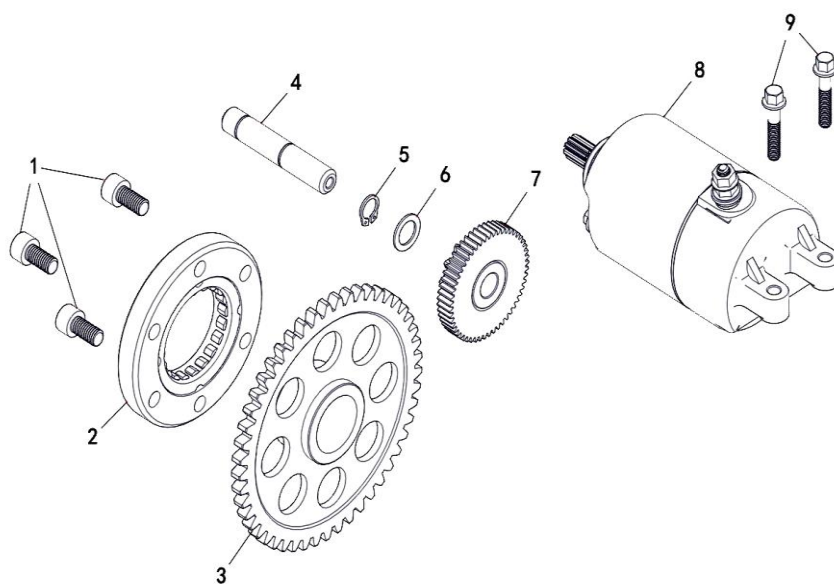
E12 RIGHT COVER



Nº	CÓDIGO	DESCRIÇÃO	Qt.	OBSERVAÇÕES
1	LH00047527	RIGHT CRANKCASE COVER	1	
2	LH00047528	RIGHT CRANKCASE COVER GASKET	1	
3	LH00022422	PIN DOWEL 10X14	2	
4	LH00023609	OIL SEAL14X27X6	1	
5	LH00027644	CLIP 27	1	
6	LH00010123	O-RING 14X2.65	1	
7	LH00023613	COVER	1	
8	LH00010122	O-RING 18X2.65	1	
9	LH00023611	DIPSTICK	1	
10	LH00011829	FLANGE BOLT M6X40	10	

M210 EFI

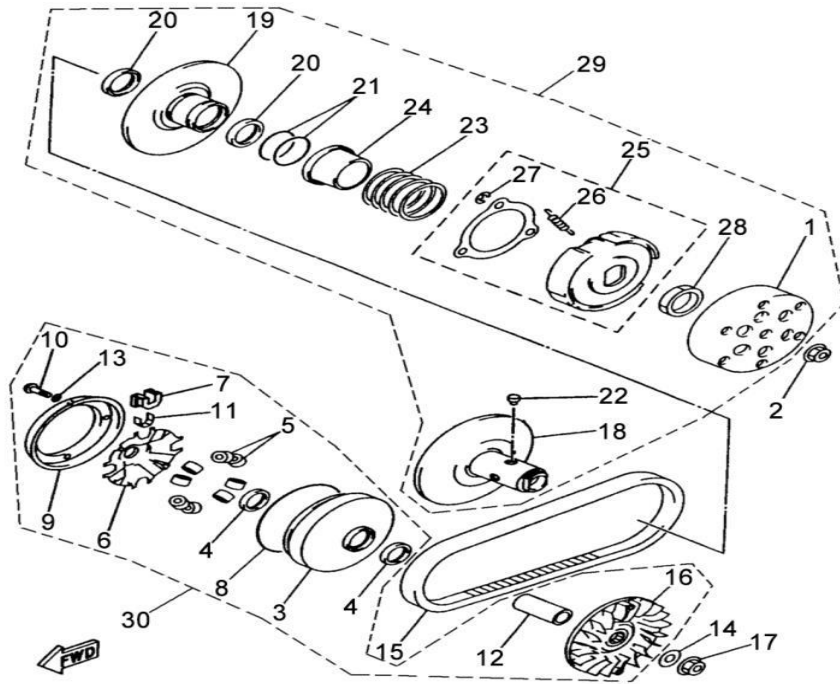
E13 STARTER



Nº	CÓDIGO	DESCRIÇÃO	Qt.	OBSERVAÇÕES
1	LH00010749	SOCKET HEAD BOLT M8X16	3	
2	LH00023706	STARTER CLUTCH	1	
3	LH00023705	GEAR	1	
4	LH00023702	SHAFT	1	
5	LH00011458	CIRCLIP 12	1	
6	LH00023703	WASHER 12	1	
7	LH00023701	GEAR IDLER	1	
8	LH00047531	STARTING MOTOR	1	
9	LH0010187W	FLANGE BOLT M6X40	2	

M210 EFI

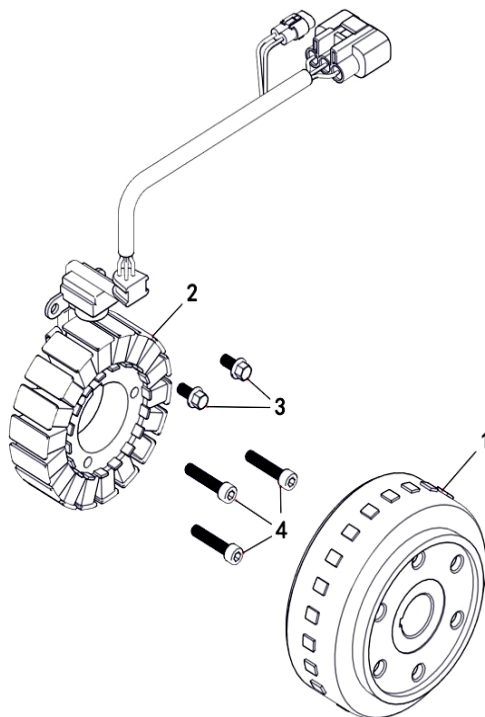
E14 CLUTCH



Nº	CÓDIGO	DESCRIÇÃO	Qt.	OBSERVAÇÕES
1	LH00025614	CLUTCH HOUSING COMP.	1	
2	LH00046191	NUT M14X1	1	
3	LH00027460	PRIMARY SLIDING SHEAVE COMP	1	
4	LH00023804	OIL SEAL	2	
5	LH00027461	WEIGHT	8	
6	LH00025615	CAM	1	
7	LH00027463	SLIDER	4	
8	LH00027464	O-RING 115X2.5	1	
9	LH00027465	STOPPER	1	
10	LH00011784	PAN HEAD SCREW M5X12	4	
11	LH00027466	SPACER 1	4	
12	LH00025616	COLLAR	1	
13	LH00023813	WASHER PLATE 4	4	
14	LH00047534	WASHER PLATE 14	1	
15	LH00023815	V-BELT (LOGO "MITSUBOSHI")	1	
15	LH00023817	V-BELT (LOGO "GATES")	1	
16	LH00025618	SHEAVE PRIMARY FIXED	1	
17	LH00046191	NUT M14X1	1	
18	LH00027469	SECONDARY FIXED SHEAVE COMP	1	
19	LH00027470	SECONDARY SLIDING SHEAVE	1	
20	LH00023820	OIL SEAL47X41X4	2	
21	LH00027471	O-RING 46.2X2	2	
22	LH00027472	PIN GUIDE	4	
23	LH00027473	COMPRESSION SPRING	1	
24	LH00027474	SEAT SECONDARY SPRING	1	
25	LH00025619	CLUTCH CARRIER ASSY	1	
26	LH00025643	CLUTCH WEIGHT SPRING 1	3	
27	LH00010133	CIRCLIP 8	3	
28	LH00023928	NUT M36X1.5	1	
29	LH00025620	DRIVEN ASSY COMPLETE	1	
30	LH00025621	DRIVE ASSY COMPLETE	1	

M210 EFI

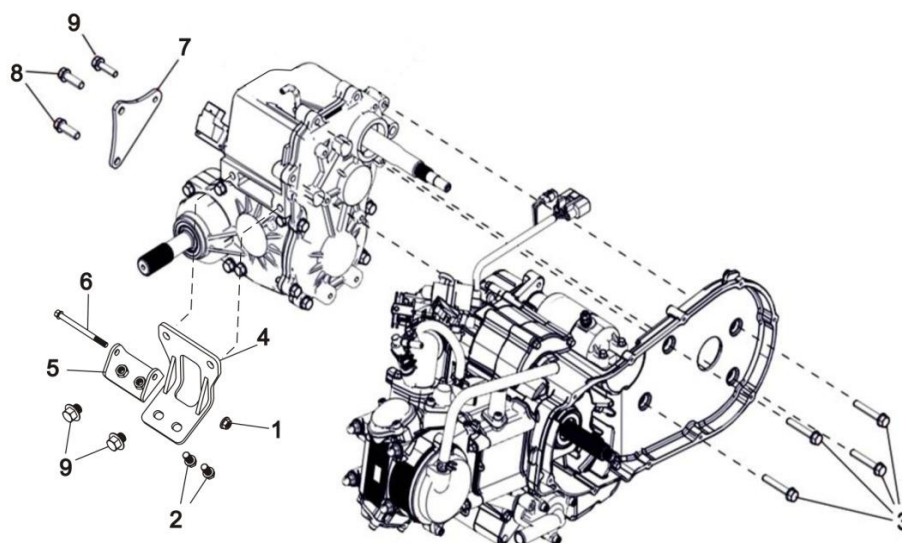
E15 GENERATOR (EFI T3)



Nº	CÓDIGO	DESCRIÇÃO	Qt.	OBSERVAÇÕES
1	LH00047529	FLYWHEEL	1	
2	LH00047530	STATOR	1	
3	LH00011827	BOLT M6X12	2	
4	LH00011633	SOCKET HEAD BOLT M6X30	3	

M210 EFI

E16 ENGINE HOLDER



Nº	CÓDIGO	DESCRIÇÃO	Qt.	OBSERVAÇÕES
1	LH00011834	JAM NUT (RIGHT)	1	
2	LH00011835	BOLT M10X1.25X28	2	
3	LH00011830	BOLT M8X55	4	
4	LH00025785	ENGINE CONNECTING PLATE 1	1	
5	LH00025786	ENGINE CONNECTING PLATE 2	1	
6	LH00011833	BOLT M12X20	1	
7	LH00025784	ENGINE CONNECTING PLATE 3	1	
8	LH00011832	BOLT M10X1.25X28	2	
9	LH00011831	BOLT M12X20	3	