

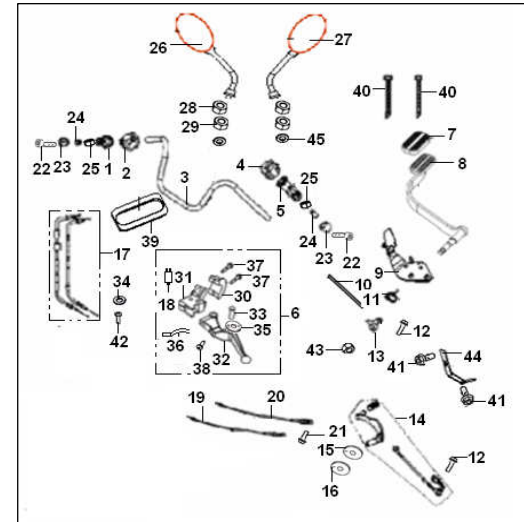
KEEWAY CRUISER 250 EFI



KEEWAY CRUISER 250 EFI

STEERING

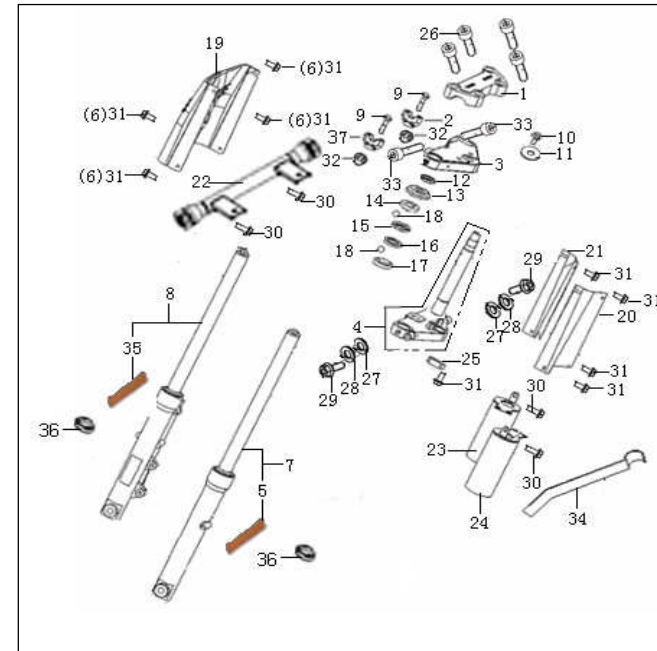
NO.	PART NO.	EN DESCRIPTION	QTY	NOTES
1	40210K2GP000	GRIP ASSY., THROTTLE	1	
2	40600N070001	SWITCH ASSY., R.	1	
3	40101N0LP000	HANDLEBAR	1	
4	40500N070002	SWITCH ASSY.,LH.	1	
5	40070K2GP000	GRIP ASSY., HANDLE, L.	1	
6	40080K2GP001	LEVER, L.	1	
7	40701N0JP000	RUBBER GROMMET BRAKE LEVER	1	
8	40710N0JP000	PEDAL ASSY., BRAKE	1	
9	40720N0LP000	ASSY., BRACKET	1	
10	40270N0LP000	REAR BRAKE LEVER ASSY	1	
11	40702N0HP000	SPRING, BRAKE RETURN	1	
12	B01020602064	BOLT 6x20MM	2	
13	40730N0LP000	BRACKET ASSY , BRAKE PEDAL	1	
14	08370N0JP000	LEVER ASSY., GEAR SHIFT	1	
15	08029J00P000	WASHER 12MM	1	
16	B08010001201	CIR-CLIP 12	1	
17	40300N050002	CABLE ASSY.I, THROTTLE	1	
18	91800J0FP000	SWITCH,CLUTCH	1	
19	72900N0JP000	CABLE ASSY,SPEEDOMETER	1	
20	40400N050001	CABLE ASSY , CLUTCH	1	
21	B01090801664	BOLT 8X16MM	1	
22	B02050605564	SCREW 6X55MM	2	
23	40031K2GP000	BALANCER	2	
24	40033K2GP000	PLUG, RUBBER	2	
25	B04070600054	NUT 6MM	2	
26	40470K2GP000	MIRROR ASSY., RR. VIEW, R.	1	
27	40460K2GP000	MIRROR ASSY., RR. VIEW, L.	1	
28	B04000800054	NUT 8mm	2	
29	B04220800044	NUT 8mm	2	
30	40081K2GP000	COVER , LEVER BRKT , UPPER	1	
31	40082K2GP000	COVER , LEVER BRKT , LOWER	1	
32	40002N050000	LEVEL,L	1	
33	40083K2GP000	BLOT	1	
34	B07030000405	WASHER 4MM	1	
35	B08010001000	CIR-CLIP 10MM	1	
36	40089K2GP000	SPRING	1	
37	40086K2GP000	SCREW M6x23	2	
38	40087K2GP000	BOLT	1	
39	40011N0LP000	PROTECTIVE RING	1	
40	96002N0HP000	BAND 200	2	
41	B01090801654	BOLT 8X16MM	2	
42	B02000401225	SCREW 4X12MM	1	
43	B04070600054	NUT 6MM	1	
44	40724N0LP000	BRACKET PLATE	1	
45	B0703000080L	WASHER 8	2	



KEEWAY CRUISER 250 EFI

FRONT FORK

NO.	PART NO.	EN DESCRIPTION	QTY	NOTES
1	43014K2GP001	BARK.,HANDLEBAR,UPPER	1	
2	43013K2GP000	BARK.,HANDLEBAR,LOWER R	2	
3	43011N0JP000	UPPER BRACKET	1	
4	43100N0JP000	LOWER BRACKET ASSY	1	
5	86402N0LP000	FRONT REFLECTOR , RH	1	
6	08001N0JP000	SCREW 6X16MM	4	
7	43300N0LP000	ABSORBER ASSY.,FR.,R.	1	
8	43200N0LP000	ABSORBER ASSY.,FR.,L.	1	
9	08011K3AP000	BOLT	2	
10	43049J000002	BOLT,STEM FIXING	1	
11	43044K3AP000	WASHER.UPPER	1	
12	43017G0KP000	NUT	1	
13	43005K3AP000	DUST COVER	1	
14	43001K2FP000	RACE,UPPER STEERING,UPPER	1	
15	43002G0KP000	RACE,UPPER STEERING,LOWER	1	
16	43003G0KP000	RACE,LOWER STEERING,UPPER	1	
17	43004K2FP000	RACE,LOWER STEERING,LOWER	1	
18	B06010200000	STEEL BALL SR6.35	38	
19	43012N0JP000	DECORATION BOARD	1	
20	43053N0JP000	FR.,L COVER ,ABSORBER ASSY.	1	
21	43054N0JP000	FR.,R COVER ,ABSORBER ASSY.	1	
22	08510N0LP000	BRACKET WELDASSY.,TURN LAMP	1	
23	43470N0JP000	DECORATION BOARD ASSY	1	
24	43440N0JP000	DECORATION BOARD ASSY	1	
25	43035N0JP000	HOLDER,HOSE ASSY, FR. BRAKE	1	
26	B0205080256L	SCREW 8x25MM	4	
27	B07000000804	WASHER 8MM	2	
28	B07030000804	WASHER 8MM	2	
29	B01020804064	BOLT 8X40MM	2	
30	B01090601264	BOLT 6X12MM	4	
31	B01090601054	BOLT 6X10MM	9	
32	B04171000054	NUT 10MM	2	
33	B02050803564	SCREW 8x35MM	2	
34	43021N0JP000	HOLDER , FR BRAKE	1	
35	86302N0LP000	FRONT REFLECTOR , LH	1	
36	43260N070000	OIL SEAL	2	
37	43024K230000	BARK.,HANDLEBAR,LOWER L	1	



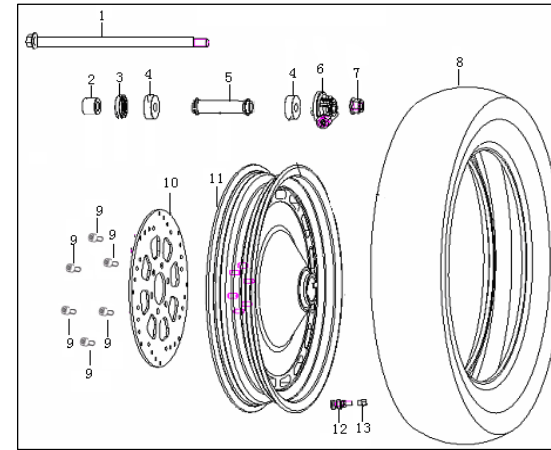
KEEWAY CRUISER 250 EFI

FRONT WHEEL

NO.	PART NO.	EN DESCRIPTION	QTY
1	44004N0JP000	AXLE, FRONT WHEEL	1
2	44005N0JP000	SPACER, FRONT WHEEL, L.	1
3	44300N0JP000	DUST SEAL	1
4	B12016030200	BEARING 60302-2RS	2
5	44600N0JP000	SPACER, MID, FR. WHEEL	1
6	44200N0JP001	GEAR BOX ASSY., SPEEDOMETER	1
7	B04171415064	BOLT 14X1.5MM	1
8	B140506F1622	TIRE	1
9	45036N0JP000	BOLT, FIXING	6
10	45033N0JP000	BRAKE DISK	1
11	44101N050000	RIM, FRONT WHEEL (SILVER)	1
12	B1404Z201130	CAP, VALVE	1
13	B1403Z1102A0	NIPPLE, VALVE	1

NOTES

110/90-16

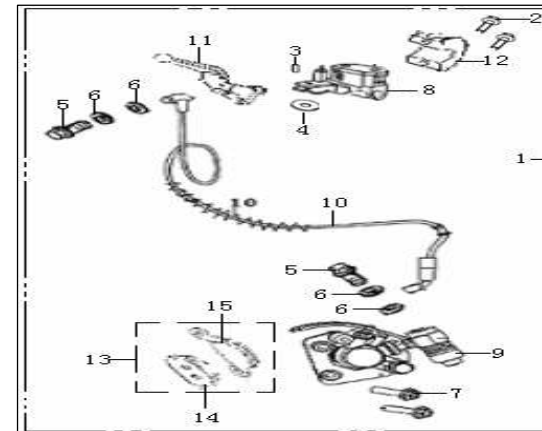


DISK BRAKE

NO.	PART NO.	EN DESCRIPTION	QTY
1	45000N0JP000	DISK BRAKE ASSY.	1
2	B01070602465	BOLT 6X24MM	2
3	40083K2GP000	BOLT	1
4	B08010001000	CIR-CLIP 10MM	1
5	45037K2FP000	BOLT,	2
6	45029K2FP000	WASHER	4
7	45039N0JP000	BOLT 10X1.25X43MM	2
8	45400K2GP000	MASTER CYLINDER ASSY.	1
9	45500N0JP000	CALIPER ASSY.	1
10	45200N0JP000	HOSE ASSY, FR. BRAKE	1
11	45022K2GP000	LEVER, DISK BRAKE	1
12	45023K2GP000	COVER	1
13	45110N0JP001	BRAKE SHOE ASSY.	1
14	45120N0JP001	BRAKE SHOE ASSY. □ MARK YN-H025	1
15	45130N0JP001	BRAKE SHOE ASSY. □ MARK FJ-009	1

NOTES

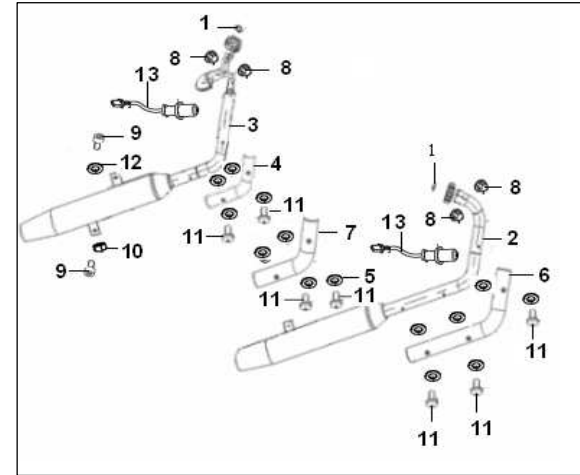
JOGO



KEEWAY CRUISER 250 EFI

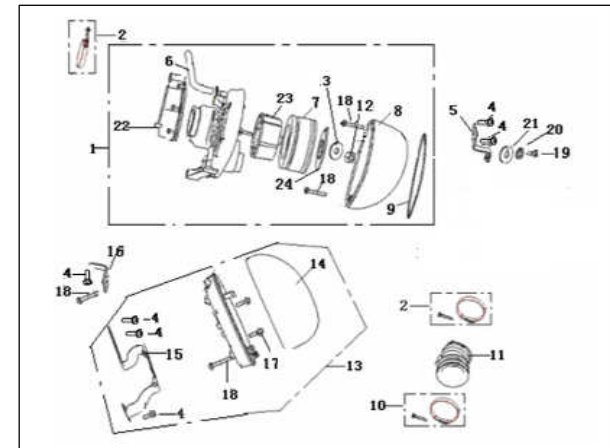
MUFFLER

NO.	PART NO.	EN DESCRIPTION	QTY	NOTES
1	47800N0HP000	GASKET, EXHAUST PIPE	2	
2	47100N070003	MUFFLER JOINTING ASSY.A (FRONT CYLINDER)	1	
3	48100N070003	MUFFLER JOINTING ASSY.B (BACK CYLINDER)	1	
4	47772N0LP000	DECORATE BOARD 3	1	
5	47016N0JP000	WASHER	14	
6	47761N0LP000	DECORATE BOARD 1	1	
7	47771N0LP000	DECORATE BOARD 2	1	
8	47006J0AP000	NUT 6MM	4	
9	B02551001664	SCREW 10×1.25×16MM	2	
10	B04181012554	NUT 10X1.25MM	1	
11	B1306060100L	SCREW 6×10MM	7	
12	B07030001004	WASHER 10MM	1	
13	310023160000	Oxygen sensor	2	



AIR CLEANER

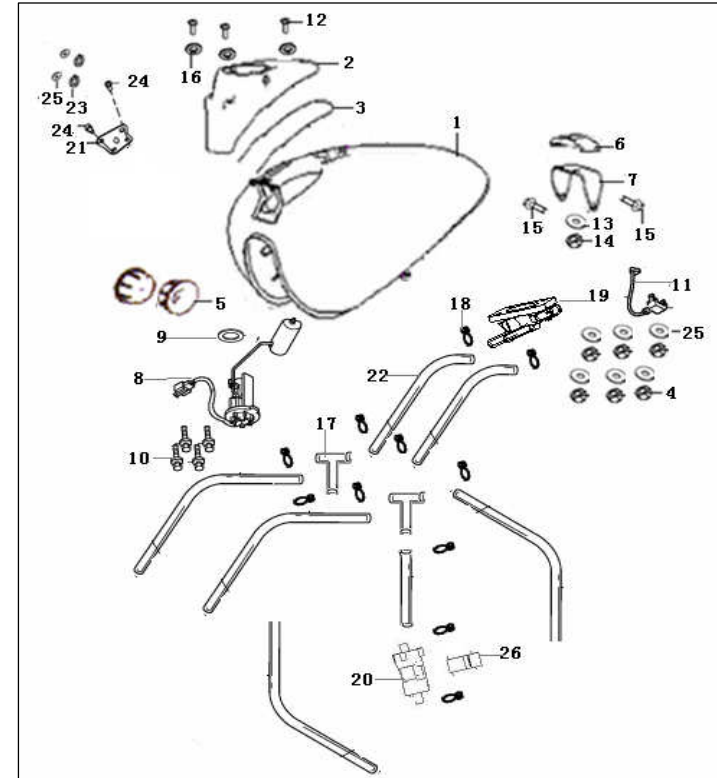
NO.	PART NO.	EN DESCRIPTION	QTY	NOTES
1	49000N0JP001	AIR CLEANER ASSY.COMP	1	
2	49350N0HP000	CLAMP ASSY	2	
3	B04000500052	NUT 5MM	1	
4	B01070601064	BOLT 6X10MM	6	
5	49340N0JP000	BRACKET , AIR CLEANER	1	
6	B16010823101	HOSE , BREATHER	1	
7	49208N0HP000	FILTER ELEMENT	1	
8	49001N0HP000	COVER , AIR CLEANER	1	
9	49013N0HP000	SEAL RING , AIR CLEANER	1	
10	49016N070000	Stainless steel clip 50	1	
11	49002N050002	Cut-off valve chest air feeder	1	
12	B07020000602	WASHER 6MM	1	
13	49700N0JP00A	COVER DECORATION ASSY	1	
14	49701N0HP000	COVER DECORATION	1	
15	49710N0JP00A	BRACKET COVER DECORATION	1	
16	49702N0JP000	BRACKET,DECORATION	1	
17	B01070602265	BOLT 6×22MM	2	
18	B02000604024	SCREW 6×40MM	4	
19	B02000603024	SCREW 6×30MM	2	
19a	B0109060406L	BOLT 6X40MM	1	
20	B07000000604	WASHER 6MM	1	
21	B07030000604	WASHER 6MM	1	
22	49002N0HP000	INTAKE	1	
23	49207N0HP000	HOLDER , FILTER ELEMENT	1	
24	49025N0HP000	SUPPORT PLATE, FITER ELEMENT	1	



KEEWAY CRUISER 250 EFI

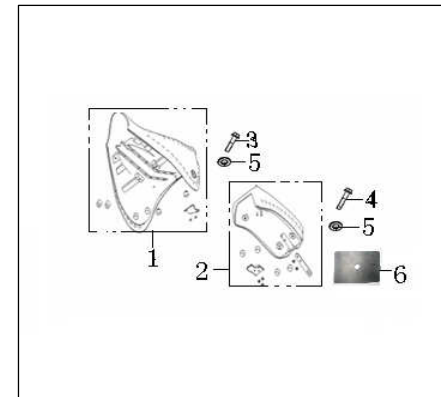
FUEL TANK

NO.	PART NO.	EN DESCRIPTION	QTY	NOTES
1	50100N07026Z	FUEL TANK JOINTING ASSY.	1	PRT/LAR
	50100N07027Z	FUEL TANK JOINTING ASSY.	1	PUR/AMA
	50100N07028Z	FUEL TANK JOINTING ASSY.	1	VRD/AMA
	50100N07029Z	FUEL TANK JOINTING ASSY.	1	LAR/AMA
	50100N07030Z	FUEL TANK JOINTING ASSY.	1	PRT/AMA
2	50116N0JP000	CAP, FUEL TANK DECORATION	1	
3	50117N0JP000	CUSHION	1	
4	B04070600054	NUT 6MM	6	
5	50005N0HP000	CUSHION, FUEL TANK, FR.	2	
6	50006N0JP000	CUSHION, FUEL TANK, RR.	1	
7	50025N0JP00A	BRACKET,FUEL TANK FIXING	1	
8	50800N050002	Oil level sensor module	1	
9	50417N070000	Rubber seal packing collar	1	
10	B01090601664	BOLT 6X16MM	4	
11	50480N070002	Pressure regulator	1	
12	08013N050000	BOLT	3	
13	B07020000601	WASHER 6MM	1	
14	B04070600055	NUT 6MM	1	
15	B01090601254	BOLT 6X12MM	2	
16	B0703000050L	WASHER 5MM	3	
17	3316801K0000	3-DIRECTIONS PIPE	2	
18	B1701016000A	CLIP	12	
19	50400N070003	Oil pump support unit	1	
20	50340N100001	Filter module	1	
21	50022N0HP000	BRACKET, SHUTOFF	1	
22	50074N070000	High-pressure oil pipe	7	
23	B07000000604	SPRING WASHER 6MM	2	
24	B0200060162L	SCREW 6X16MM	2	
25	B07030000604	WASHER 6MM	8	
26	50391N070000	Filter protective covering	1	



SEAT

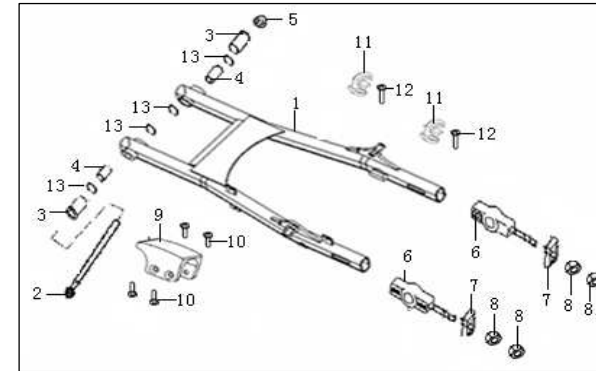
NO.	PART NO.	EN DESCRIPTION	QTY	NOTES
1	51100N0LP000	SEAT I	1	
2	51200N0LP000	SEAT II	1	
3	B01090801264	BOLT 8X12MM	1	
4	B01090801664	BOLT 8X16MM	1	
5	B0703000080C	WASHER 8MM	2	
6	51013N0LP000	RUBBER CUSHION	1	



KEEWAY CRUISER 250 EFI

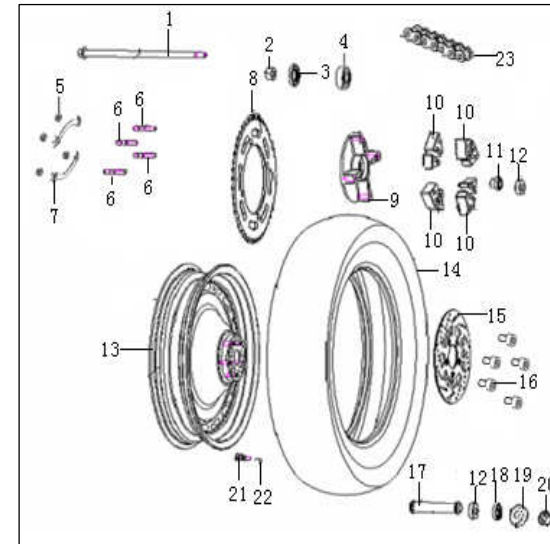
REAR SWINGING ARM

NO.	PART NO.	EN DESCRIPTION	QTY	NOTES
1	53100N070006	REAR SWINGING ARM COMP.	1	
2	53001N0JP000	SHAFT, PIVOT	1	
3	53007N0LP000	SPACER, SWINGING ARM	2	
4	B1210K490100	BEARING	2	
5	B04171212564	NUT 12X1.25MM	1	
6	53230N0LP000	ADJUSTER COMP., CHAIN	2	
7	53234N0LP000	FIXING PLATE, ADJUSTER	2	
8	B04000800054	NUT 8MM	2	
9	53004N0LP000	BUFFER, CHAIN TOUCH DEFENSE	1	
10	B02010501025	SCREW 5X10MM	4	
11	53009N0JP000	CLIP	2	
12	B02010601024	SCREW 6X10MM	2	
13	53017N070000	OIL SEAL	4	



REAR WHEEL

NO.	PART NO.	EN DESCRIPTION	QTY	NOTES
1	44004N0JP000	AXLE, FRONT WHEEL	1	
2	60007N0LP000	SPACER, RR. WHEEL, L.	1	
3	60200N0JP000	OIL SEAL	1	
4	B12016030400	BEARING 60304-2RS	1	
5	B04001012564	NUT 10X1.25MM	4	
6	60015N0JP000	BOLT , SPROCKET	4	
7	60004N0LP000	LOCK WASHER	2	
8	60002N0JP000	SPROKET , CHAIN	1	
9	60001N0JP000	HUB , SPROCKET	1	
10	54024N0JP000	CUSHION , RR , WHEEL	4	
11	60006N0JP000	SPACER , SPROCKET	1	
12	B12016030200	BEARING 60302-2RS	2	
13	54101N050000	RIM, RR. WHEEL (SILVER)	1	
14	B140507F1621	TIRE	1	
15	55033N050002	BREAK DISC , RR diameter 240mm	1	
16	45036N0JP000	BOLT, FIXING	5	
17	54550N0JP000	MID SPACER, RR. WHEEL	1	
18	54300N0JP000	OIL SEAL	1	
19	54005N0JP000	SPACER, RR. WHEEL, R.	1	
20	B04171415064	NUT M16X1.5	1	
21	B1403Z203300	NIPPLE , VALVE	1	
22	B1404Z201130	CAP, VALVE	1	
23	B1501C1118B0	DRIVE CHAIN 10MA-1X118	1	



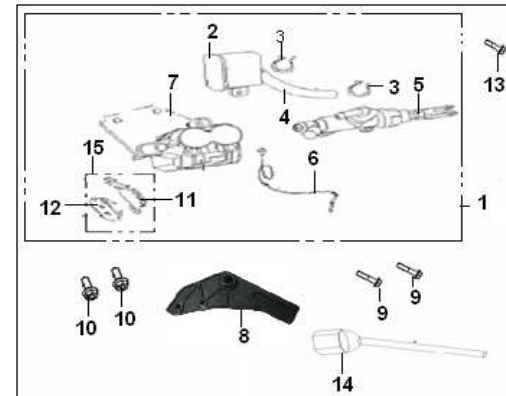
120/90-16

KEEWAY CRUISER 250 EFI

BACK DISK BRAKE

NO.	PART NO.	EN DESCRIPTION	QTY
1	55900N070000	REAR DISK BRAKE ASSY	1
2	55140N0JP000	OIL CUP	1
3	55131N0JP000	SPRING I, LOCK	2
4	55220N0JP000	HOSE, FR. BRAKE (DOT)	1
5	55400N0JP000	MASTER CYLINDER	1
6	55210N0JP000	HOSE, FR. BRAKE (DOT)	1
7	55500N050000	CALIPER ASSY.	1
8	55300N0LP000	BRACKET	1
9	B01090602564	BOLT 6X25MM	2
10	B01090801664	BOLT 8X16MM	2
11	55120N0JP001	BRAKE SHOE ASSY.I	1
12	55130N0JP001	BRAKE SHOE ASSY.II	1
13	B01090601264	BOLT 6X12MM	1
14	91080N0LP000	SWITCH REAR BRAKE	1
15	55110N0JP001	BRAKE SHOE ASSY.	1付

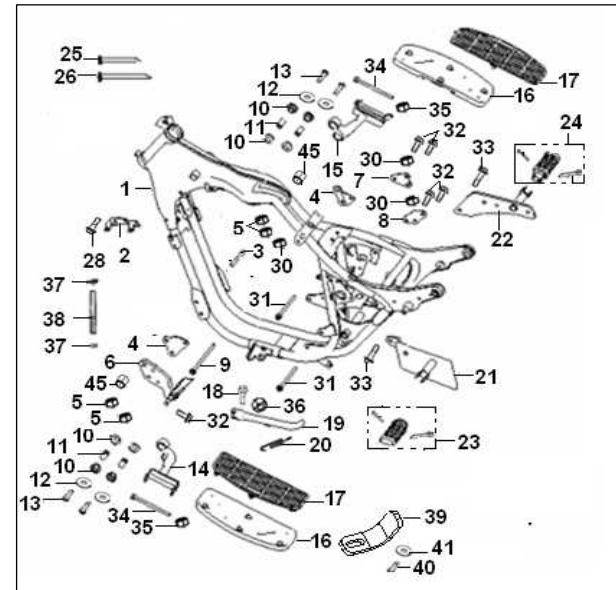
NOTES



KEEWAY CRUISER 250 EFI

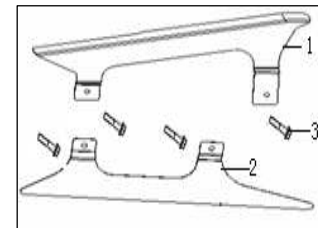
FRAME

NO.	PART NO.	EN DESCRIPTION	QTY	NOTES
1	57100N070005	FRAME BODY ASSY.	1	
2	58770N0HP000	BRACKET, IGNITION COIL	1	
3	57024N020000	STUD , FR.FOOT REST FIXING	1	
4	57011N0HP000	BRACKET, ENGINE, FR.	2	
5	B04221012564	NUT 10X1.25MM	4	
6	58220N0JP000	BRACKET, FR. L. FOOTREST	1	
7	57008N0HP000	UPPER BRACKET, ENGINE, R.	1	
8	57009N0HP00A	LOWER BRACKET, ENGINE, R.	1	
9	58303N0HP000	SHAFT, ENGINE, FR.	1	
10	58229N0HP000	SLEEVE , RUBBER	8	
11	58228N0HP000	BUSH I	4	
12	B07020001004	WASHER 10MM	4	
13	57024N050000	BOLT, FOOTREST FIXING	4	
14	58450N0JP00A	SEAT, FOOTREST.L	1	
15	58470N0JP00A	SEAT, FOOTREST.R	1	
16	58230N0JP000	FOOTREST ASSY.	2	
17	58210N0JP000	FOOTREST ASSY.	2	
18	57005N0JP000	BOLT, SIDE STAND MOUNTING	1	
19	58701N0JP00A	SIDE STAND ASSY.	1	
20	57010N0LP000	SPRING, SIDE STAND	1	
21	58270N070009	BRACKET, L., RR., FOOTREST	1	
22	58290N070006	BRACKET, R., RR., FOOTREST	1	
23	58260N30P000	FOOTREST ASSY., RR., L.	1	
24	58280N30P000	FOOTREST ASSY., RR., R.	1	
25	96002N0HP000	BAND II 200	1	
26	96001N0HP000	BAND I 150	7	
28	B01090601264	BOLT 6x12MM	1	
30	B04070000854	NUT 8MM	3	
31	B01090811064	BOLT 8X110MM	2	
32	B01090801664	BOLT 8x16MM	5	
33	B01090802064	BOLT 8x20MM	2	
34	B01090811864	BOLT 8X118MM	2	
35	B04070800054	NUT 8MM	2	
36	B04001012564	NUT 10x1.25MM	1	
37	08431N0HP000	CLIP 16mm	2	
38	08402N0LP000	HOSE	1	
39	58702N0LP000	BRACKET	1	
40	B02050501564	SCREW 5X15MM	1	
41	B07000000504	WASHER 5MM	1	



SPROCKET

NO.	PART NO.	EN DESCRIPTION	QTY	NOTES
1	60101N0LP001	CASE,BELT ,UPPER	1	
2	60102N0LP000	CASE, BELT ,BELOW	1	
3	B01090601064	BOLT 6X10MM	5	

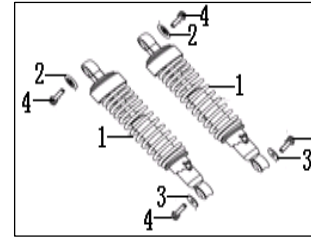


KEEWAY CRUISER 250 EFI

REAR ABSORBER

NO.	PART NO.	EN DESCRIPTION	QTY
1	6300N0JP000	REAR ABSORBER ASSY.	2
2	63013G0KP000	WASHER, UPPER, REAR ABSORBER	2
3	63014G0KP000	WASHER, LOWER, REAR ABSORBER	2
4	B01090801664	BOLT 8x16MM	4

NOTES

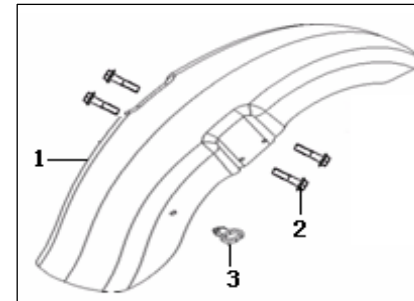


FRONT FENDER

NO.	PART NO.	EN DESCRIPTION	QTY
1	65101N070040	FRONT FENDER	1
	65101N070050	FRONT FENDER	1
	65101N070060	FRONT FENDER	1
	65101N070070	FRONT FENDER	1
	65101N070080	FRONT FENDER	1
1A	65101N07004Z	FRONT FENDER	1
	65101N07005Z	FRONT FENDER	1
	65101N07006Z	FRONT FENDER	1
	65101N07007Z	FRONT FENDER	1
	65101N07008Z	FRONT FENDER	1
2	B01090601264	BOLT 6X12MM	4
3	65105JCCT000	RING	1

NOTES

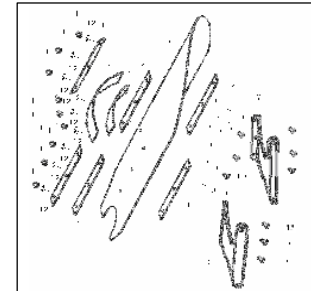
- PRT/LAR
- PUR/AMA
- VRD/AMA
- LAR/AMA
- PRT/AMA
- PRT/LAR C/ AUTOCOLANTES
- PUR/AMA C/ AUTOCOLANTES
- VRD/AMA C/ AUTOCOLANTES
- LAR/AMA C/ AUTOCOLANTES
- PRT/AMA C/ AUTOCOLANTES



WINDSHIELD

NO.	PART NO.	EN DESCRIPTION	QTY
1	65514N0JP000	MOUNTING PLATE WINDSHIELD	2
2	65515N0JP00A	MOUNTING PLATE UPPER	1
3	65508N0JP000	CUSHION WASHER I	1
4	65509N0JP000	CUSHION WASHER II	4
5	65503N0JP001	WINDSHIELD	1
6	65485N050000	CUSHION WASHER	3
7	65530N0JP000	BRKT, ASSY. L	1
8	65520N0JP000	BRKT, ASSY. R	1
9	B07020000604	WASHER 6MM	3
10	B02000601624	SCREW 6X16MM	7
11	B04220600024	CAP NUT 6 mm	9
12	65551N0JP000	BUSH	9
13	B02000602024	SCREW 6X20MM	2

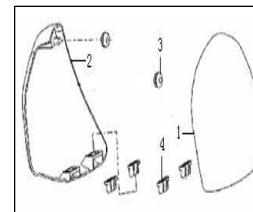
NOTES



FRAME COVER

NO.	PART NO.	EN DESCRIPTION	QTY
1	65601N0HP001	FRAME COVER, L.	1
2	65602N0HP001	FRAME COVER, R.	1
3	65616N0HP000	CUSHION, FRAME COVER I	2
4	65618N0HP000	CUSHION, FRAME COVER II	4

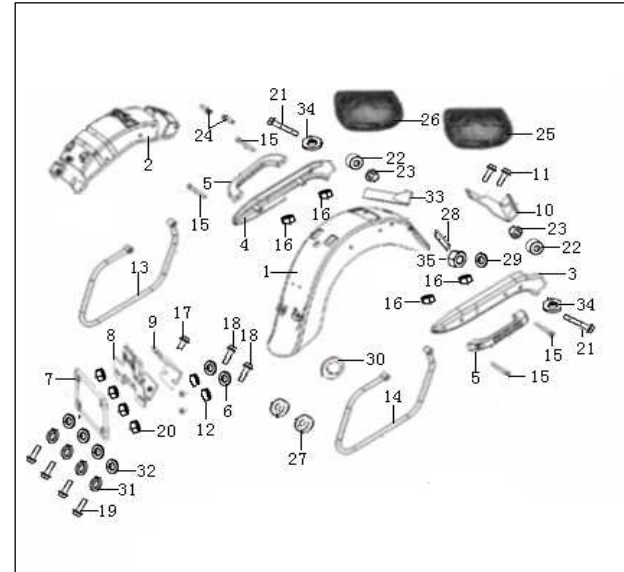
NOTES



KEEWAY CRUISER 250 EFI

REAR FENDER

NO.	PART NO.	EN DESCRIPTION	QTY	NOTES
1	65701N07BH01	REAR FENDER	1	PRT/LAR E PRT/AMA
	65701N07P501	REAR FENDER	1	PUR/AMA
	65701N07GY01	REAR FENDER	1	VRD/AMA
	65701N07TX01	REAR FENDER	1	LAR/AMA
1A	65701N07007Z	REAR FENDER	1	PRT/LAR C/ AUTOCOLANTES
	65701N07008Z	REAR FENDER	1	PUR/AMA C/ AUTOCOLANTES
	65701N07009Z	REAR FENDER	1	VRD/AMA C/ AUTOCOLANTES
	65701N07010Z	REAR FENDER	1	LAR/AMA C/ AUTOCOLANTES
	65701N07011Z	REAR FENDER	1	PRT/AMA C/ AUTOCOLANTES
2	65720N0LP000	REINFORCEMENT ASSY	1	
3	65960N0LP00A	RIGHT ORNAMENT OF REAR FENDER	1	
4	65950N0LP00A	LEFT ORNAMENT OF REAR FENDER	1	
5	65971N0LP000	REAR HAND RAIL	2	
6	54018K00P000	RING	2	
7	08207N0JP000	PLATE ASSY.	1	
8	08210N0LP000	bracket ASSY.	1	
9	08204N0JP000	PLATE	1	
10	65718N0JP000	FIX-IGNITION	1	
11	B01090601664	BOLT 6X16MM	2	
12	52009JJ0P000	BUSH	2	
13	52300K2GP001	BRACKET ,BAG LH	1	
14	52400K2GP001	BRACKET,BAG RH	1	
15	B02050808064	SCREW 8X80MM	2	
	B02050808564	SCREW 8X85MM	2	
16	B04070800064	NUT 8MM	4	
17	B01090601254	BLOT 6X12MM	1	
18	B01090602554	BLOT 6X25MM	2	
19	B01010601655	BLOT 6X16MM	4	
20	B04070000655	NUT 6MM	6	
21	B01091006864	BOLT 10X1.25X68MM	2	
22	51304K0BP000	BUSH	2	
23	B04171012564	NUT 10X1.25MM	2	
24	B01091002064	BOLT 10X20MM	2	
25	52250K230010	BAG..L.	1	
26	52260K230010	BAG..R.	1	
27	82015K2GP000	BUSH	2	
28	86500N0LP000	REAR REFLECTOR	1	
29	B07020000603	WASHER 6MM	1	
30	65703K2GP000	RUBBER	1	
31	B07000000605	WASHER 6MM	4	
32	B07030000605	WASHER 6MM	4	
33	65723N0JP000	LID	1	
34	B07030001000	WASHER 10MM	2	
35	B04000600053	NUT 6MM	1	

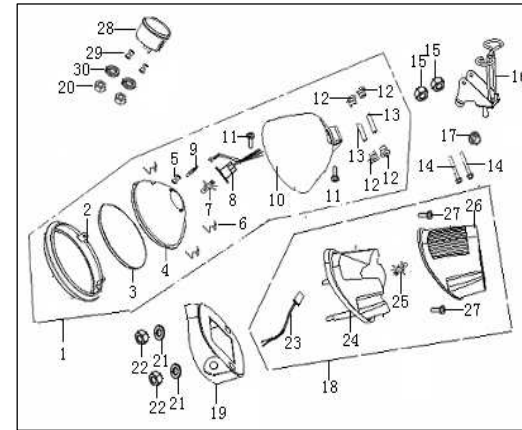


KEEWAY CRUISER 250 EFI

ELECTRIC I

NO.	PART NO.	EN DESCRIPTION	QTY
1	8000N0LP000	HEAD LAMP ASSY.	1
2	80025N0JP000	RIM, HEAD LIGHT	1
3	80004N0JP001	COVER , HEADLIGHT	1
4	80006N0JP000	BOWL., HEAD LIGHT	1
5	80022N0JP000	BASE HEAD LAMP	1
6	80024N0JP000	RING	3
7	B24010520000	BULB , HEAD LIGHT 12V/35W	1
8	80003N0JP000	LAMP HOLDER	1
9	B24012220000	BULB POSITION LIGHT 12V/4W	1
10	80007N0JP000	BASE, HEAD LIGHT	1
11	B02000501624	SCREW 5X16 MM	2
12	08331N0JP000	RUBBER WASHER	4
13	08344N0JP000	SPACER	2
14	B01090605564	BOLT 6X55MM	2
15	B04070600064	NUT 6MM	2
16	80030N0JP000	BASE, HEAD LAMP	1
17	B04171000064	NUT 10MM	1
18	82000N0LP000	TAIL LAMP ASSY.	1
19	82003N0JP000	BASE , TAIL LAMP	1
20	B04020500065	NUT 5MM	2
21	B07030000604	WASHER 6MM	2
22	B04000600053	NUT 6MM	2
23	82900K2GP001	WIRE ASSY., TAIL LIGHT	1
24	82012K2GP001	FRAME , TAIL LAMP	1
25	B24013820000	BULB, TAIL LIGHT 12V21W/5W	1
26	82008K2GP000	COVER, TAIL LIGHT	1
27	B02000401024	SCREW 4X10MM	2
28	70000N070002	SPEEDOMETER ASSY.	1
29	50014N0JP000	BUSH	2
30	B07020000501	WASHER 5MM	2

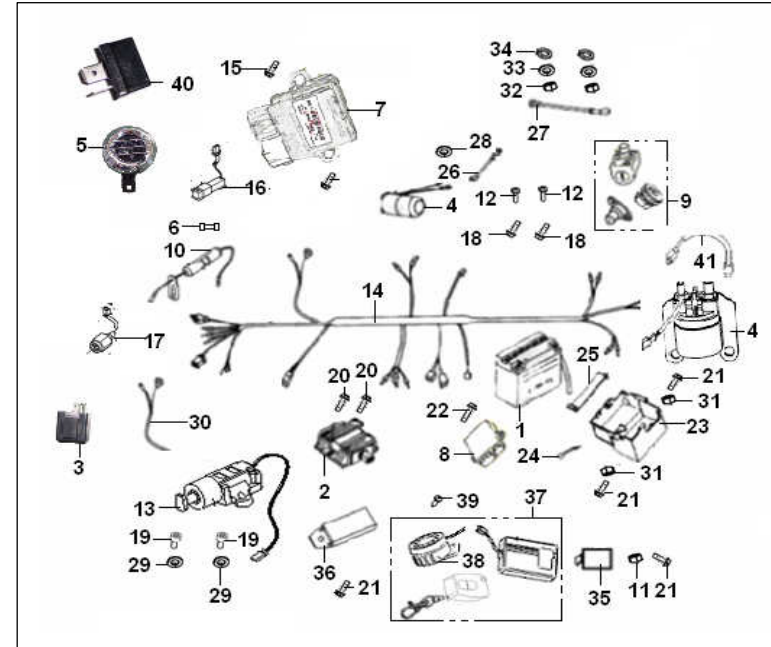
NOTES



KEEWAY CRUISER 250 EFI

ELECTRIC II

NO.	PART NO.	EN DESCRIPTION	QTY	NOTES
1	96100J00P000	BATTERY 12V , 9AH	1	
2	98801N04FN04	RECTIFIER	1	
3	96400N070001	RELAY, TURN SIGNAL	1	
4	94100BS0T000	RELAY, KICK STARTER	1	
5	95100B130002	HORN ASSY.	1	
6	96810N0HP000	FUSE	1	
7	319015130000	ECU	1	
8	96210N070000	ignition loop	1	
9	88000N0LP00A	LOCK ASSY	1	
10	96800N0HP000	FUSE COMP.	1	
11	B04070600054	NUT 6 MM	1	
12	B02010601023	SCREW 6X10MM	2	
13	91900N0LP000	SWITCH	1	
14	92050N07000C	HARNES, WIRING	1	
15	B01090601664	BOLT 6X16MM	2	
16	310015040000	Inlet temperature sensor	1	
17	96910N070000	Manifold pressure sensor	1	
18	B01090601664	BOLT 6X12MM	2	
19	B02050501565	SCREW M5X15	2	
20	B01090601664	BOLT 6X16MM	2	
21	B01090601264	BOLT 6X12MM	4	
22	B01090601664	BOLT 6X20MM	1	
23	65816N0HP000	CASE, BATTERY	1	
24	96002N0LP000	BAND 200MM	5	
25	96004N0HP000	BAND , BATTERY CASE	1	
26	96900N0HP000	WIRE, EARTH	1	
27	92900N0HP000	WIRE, MOTOR	1	
28	B07000000605	WASHER 6MM	2	
29	B07030000505	WASHER 5MM	2	
30	92070N07000C	FAI CABLE	1	
31	B04070600064	NUT 6MM	3	
32	B04000600063	NUT 6MM	2	
33	B07000000603	WASHER 6MM	2	
34	B07030000603	WASHER 6MM	2	
35	97291N0HP000	PLATE	1	
36	97900B030000	THERMOSTAT	1	
37	95700N0HP000	ALARM SYSTEM ASSY	1	
38	97600N0HP000	HORN ALARM SYSTEM	1	
39	B05074001205	SCREW 4X12MM	2	
40	96700K060000	DIODE	1	
41	92200J070000	ELECTRIC CABLE	1	

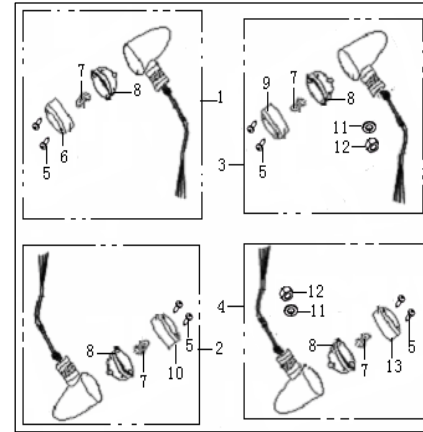


KEEWAY CRUISER 250 EFI

ELECTRIC III

NO.	PART NO.	EN DESCRIPTION	QTY
1	81500N0LP000	TURN SIGNAL, RR., L.	1
2	81100N0LP000	TURN SIGNAL, FR., L.	1
3	81700N0LP000	TURN SIGNAL, RR., R.	1
4	81300N0LP000	TURN SIGNAL, FR., R.	1
5	B05070404523	SCREW 4X45MM	8
6	81503N0HP000	COVER, TURN SIGNAL, RR.,L	1
7	B24012120000	BULB,12V/10W	4
8	81105N0HP000	BOWL REPER CUSSION TURN SIGNAL	4
9	81703N0HP000	COVER, TURN SIGNAL, RR.,R	1
10	81103N0HP000	COVER, TURN SIGNAL, FR., L.	1
11	B07000001003	WASHER 10MM	2
12	B04001000063	NUT 10MM	2
13	81303N0HP000	COVER, TURN SIGNAL, FR., R.	1

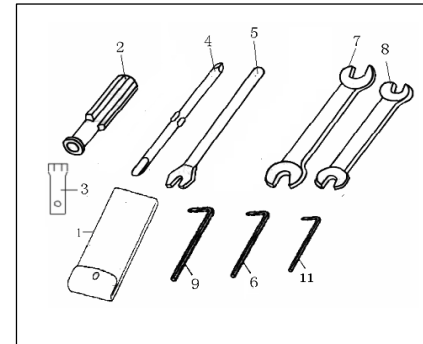
NOTES



TOOL KIT

NO.	PART NO.	EN DESCRIPTION	QTY
1	02110G0BP000	TOOL BAG	1
2	02104G00P000	HANDLE	1
3	02101N0HP000	SOCKET, SPARK PLUG	1
4	02103G00P000	SCREW DRIVER, DOUBLE-HEADED	1
5	02102G00P000	SPANNER, SPARK PLUG	1
6	B200206000R3	SOCKET WRENCH 6	1
7	B20011301603	WRENCH, DOUBLE-HEADED 13-16	1
8	B20011001203	WRENCH, DOUBLE-HEADED 10-12	1
9	B200208000R3	SOCKET WRENCH 8	1

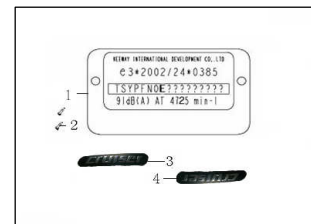
NOTES



STICKER

NO.	PART NO.	EN DESCRIPTION	QTY
1	57001N070007	PLATE, LABEL	1
2	B10000300602	RIVET 3X6MM	2
3	05533N070000	LABEL FUEL TANK LEFT	1
4	05534N070000	LABEL FUEL TANK RIGHT	1

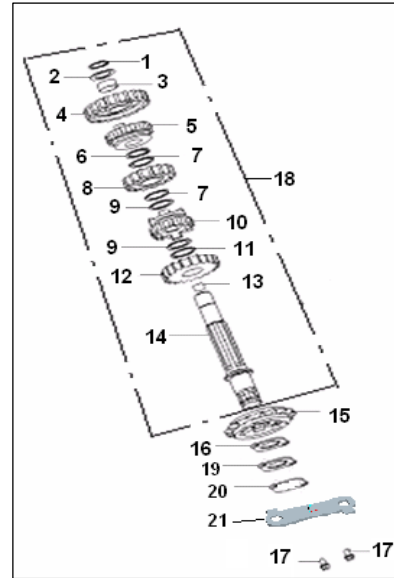
NOTES



KEEWAY CRUISER 250 EFI

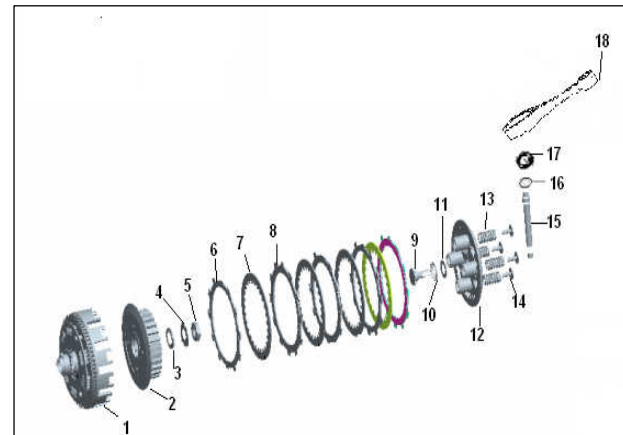
E01 COUNTERSHAFT ASSY

NO.	PART NO.	EN DESCRIPTION	QTY	NOTES
1	B08010002000	CIRCLIP	1	
2	17307N04F000	WASHER	1	
3	17306N04F000	BUSH	1	
4	17305N04F000	GEAR, 1st driven	1	
5	17312N04F000	GEAR, 4st driven	1	
6	B08010002500	CIRCLIP	1	
7	17310N04F000	WASHER	2	
8	17311N04F000	GEAR, 3rd driven	1	
9	17346N04F000	CIRCLIP	2	
10	17320N04F000	GEAR, 5th driven	1	
11	17348N04F000	WASHER	1	
12	17309N04F000	GEAR, 2nd driven	1	
13	17347N04F000	SLIP WAHER	1	
14	17303N04F000	SHAFT , DRIVEN	1	
15	17340N04F000	SPROCKET ASSY	1	
16	17344N04F940	WASHER, lock	1	
17	B01030601663	BOLT	2	
18	209102.014000	DRIVEN SHAFT , ASSY	1	
19	210365040000	CAP , SPROCKET	1	
20	210355040000	CAP , OIL PUMP	1	
21	210345040000	GASKET	1	



E02 CLUTCH ASSY

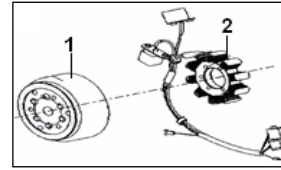
NO.	PART NO.	EN DESCRIPTION	QTY	NOTES
1	24400N04F000	HUB, primary drive	1	
2	24500N04F000	HUB, clutch sleeve	1	
3	24616N04F000	WASHER, spline	1	
4	24615N04F930	STOP WASHER (20-GB11253-89)	1	
5	24607N04F930	NUT M16X1.6	1	
6	200325040000	PLATE FRICTION	2	
7	24708N04F000	PRESSURE PLATE	4	
8	24705N04F000	PLATE FRICTION	3	
9	200225040000	RACK	1	
10	200123070000	NEEDLE BEARING	1	
11	B1203M152800	WASHER	1	
12	24503N04F000	HUBSEAT	1	
13	24611N04F930	SPRING	4	
14	24507N04F000	BOLT (M6x20)	4	
15	200215040000	PULL ROD	1	
16	120033070000	WASHER	1	
17	200023090000	SEAL	1	
18	209073090000	DISENGAGING LEVEL	1	



KEEWAY CRUISER 250 EFI

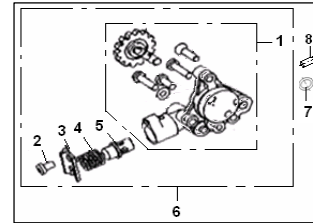
E03. MAGNETO ASSY

NO.	PART NO.	EN DESCRIPTION	QTY	NOTES
1	299025130000	FLY WHEEL ASSY	1	
2	299035040000	COIL ASSY STATOR	1	



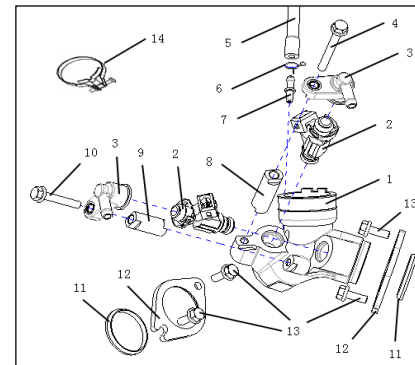
E04 OIL PUMP ASSY

NO.	PART NO.	EN DESCRIPTION	QTY	NOTES
1	219100.040000	ASSY,oil pump	1	
2	B02040601063	SCREW (M6X10)	1	
3	19301N04F910	PLATE	1	
4	19302N04F930	SPRING	1	
5	19303N04F000	VALVE,decompress	1	
6	19000N04F000	OIL PUMP ASSY	1	
7	260055040000	O SEAL RING	1	
8	B02010602523	SCREW 6X25	1	



E05.进气管分总成 (DELPHI电喷用)

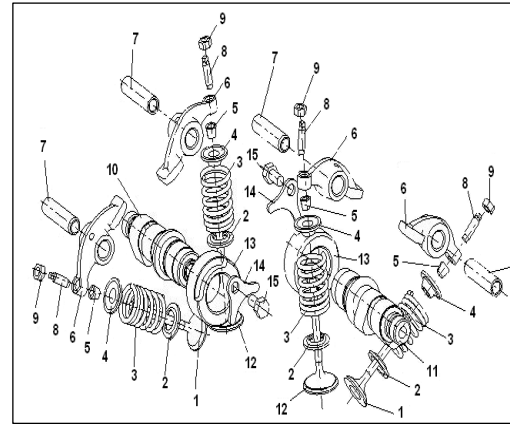
NO.	PART NO.	EN DESCRIPTION	QTY	NOTES
1	119015040011		1	
2	289023160000	OIL ATOMIZER	2	
3	289043070000	BASE,OIL ATOMIZER	2	
4	B01070606064	BOLT M6×60	1	
5	110075130000	PIPE,MAP	1	
6	110015050000	CLAMP ASSY	1	
7	110033160000		1	
8	110035130000	SPACER I	1	
9	110045130000	SPACER II	1	
10	B01070604564	BOLT M6×45	1	
11	110055130000	SEAL RING	2	
12	110065130000	FLANGE	2	
13	B01070601664	BOLT M6×16	4	
14	202104.005472	CLAMP ASSY	1	



KEEWAY CRUISER 250 EFI

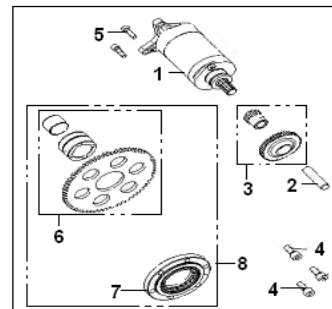
E06. INTAKE & EXHAUST MECHANISM

NO.	PART NO.	EN DESCRIPTION	QTY	NOTES
1	30201N04F000	VALVE , exhaust	2	
2	30106N04F000	GASKET, valve spring	4	
3	30101N04F930	SPRING, valve	4	
4	30105N04F000	RETAINER, valve spring	4	
5	30108N04F000	COTTER, valve	8	
6	30123N04F000	ARM, valve rocker	4	
7	30121N04F000	SHAFT, valve rocker	4	
8	30303H03F000	SCREW, adjusting	4	
9	30302H03F930	NUT, adjusting	4	
10	30401N04F000	CAMSHAFT(□)	1	
11	30424N04F000	CAMSHAFT(□)	1	
12	30103N04F000	VALVE, intake	2	
13	30423N04F000	SEAT, camshaft	2	
14	30417N04F000	PLATE, camshaft	2	
15	B02040601262	SCREW	2	



E07 STARTING CLUTCH ASSY

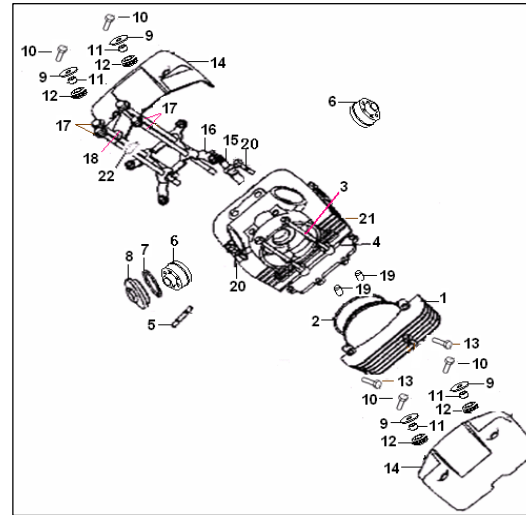
NO.	PART NO.	EN DESCRIPTION	QTY	NOTES
1	249015040030	MOTOR ASSY, starting	1	
2	34146N04F000	SHAFT, starting gear	1	
3	34140N04F000	GEAR COMP, starting idle	1	
4	B02040801862	SCREW	3	
5	B02040602562	SCREW	2	
6	34150N04F000	BIG GEAR COMP, starting	1	
7	34400N04F000	CLUTCH COMP	1	
8	217100.018082	EXCEED CLUTCH ASSY	1	



KEEWAY CRUISER 250 EFI

E08 CYLINDER HEAD ASSY

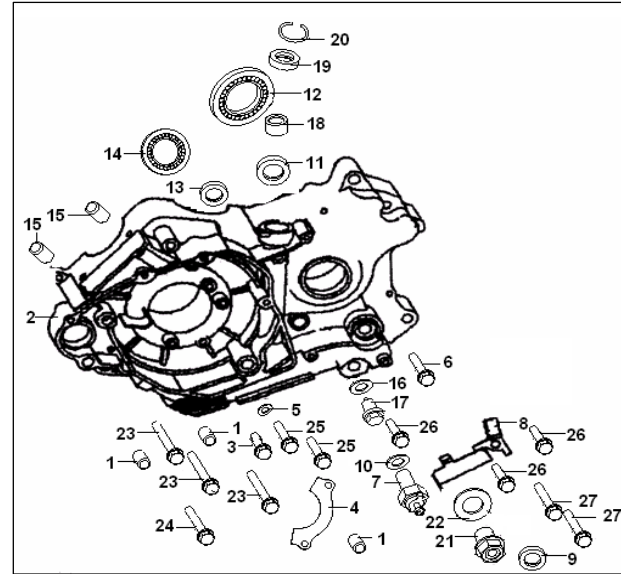
NO.	PART NO.	EN DESCRIPTION	QTY	NOTES
1	100055040030	RIGHT COVER, cylinder head	1	
2	30505N04F000	O RING (82.5×3)	1	
3	B01070611064	SCREW (M6X110)	2	
4	100025040030	GASKET, head cover	1	
5	201216.001472	STUD BOLT (6×43)	2	
6	30240N04F000	SEAL COMP, valve	2	
7	30116N04F000	O RING (45X3)	2	
8	201326.003082	OBSERVE COVER	2	
9	30112N04F940	WASHER	4	
10	B01070602064	SCREW (M6X20)	4	
11	30534N04F910	CONDUIT	4	
12	30111N04F000	GASKET, seal	4	
13	B01070602564	SCREW (M6X25)	2	
14	201300.018082	HEAD COVER COMP	2	
15	299075040001	SPARK PLUG	1	CR6HSA
16	30320N04F910	FIXTURE	1	
17	201313.006472	MOUNT	4	
18	30515N04F000	FLAT WASHER 20X8.5X2 (T3M2 GB 2040-2002)	1	
19	26208J01F000	PIN, POWEL	2	
20	B01070604064	SCREW (M6X40)	2	
21	109055040040	CLINDER HEAD COMP	1	
22	26117J01F000	O RING (6.8X1.9)	3	



KEEWAY CRUISER 250 EFI

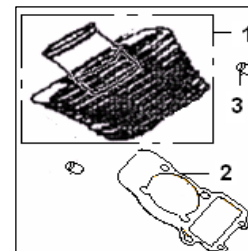
E09 LEFT CRANKCASE ASSY

NO.	PART NO.	EN DESCRIPTION	QTY	NOTES
1	26123G02F000	PIN DOWEL	2	
2	159025040020	LEFT CRANKCASE COMP	1	
3	B01030601263	BOLT	2	
4	26113N04F000	CHAINPLATE	2	
5	307991002230	WASHER □	2	
6	301310603065	SCREW	2	
7	219071170000	SENCOR,neutral switch	1	
8	26603N04F940	CLAMP □	1	
9	26133N04F000	OIL SEAL I	1	
10	307991511651	WASHER	1	
11	26130N04F000	OIL SEAL □	1	
12	B12016630550	BEARING	1	
13	26129N04F000	OIL SEAL □	1	
14	B12016610350	BEARING	1	
15	26123G02F000	PIN,dowel	4	
16	307991002430	WASHER □	1	
17	26138N04F940	SCREW,dowel	1	
18	26137N04F000	BEARING	1	
19	26142N04F000	OILSEAL□	1	
20	B08000002800	CLIP	1	
21	26144N04F000	PLUG	1	
22	26145N04F000	WASHER	1	
23	301310608065	SCREW	4	
24	301310607065	SCREW	2	
25	301310604065	SCREW	1	
26	301310602565	SCREW	4	
27	301310606365	SCREW	2	



E10 CYLINDER ASSY

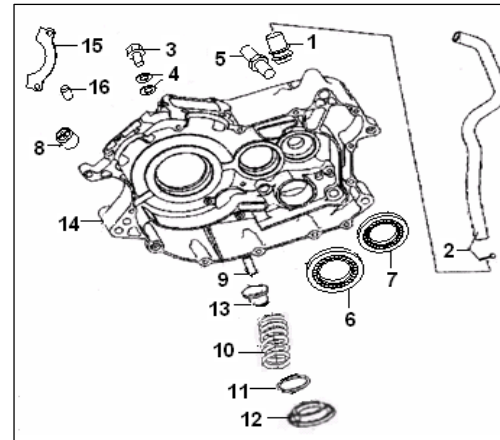
NO.	PART NO.	EN DESCRIPTION	QTY	NOTES
1	139015040060	CYLINDER ASSY BLACK	1	
2	27102N04F000	GASKET,cylinder	1	
3	26208J01F000	PIN,POWEL	2	



KEEWAY CRUISER 250 EFI

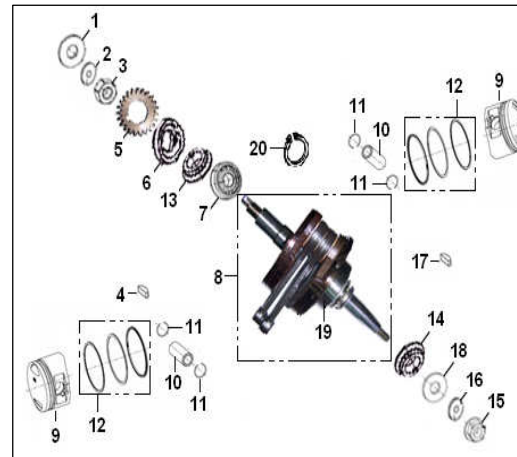
E11 RIGHT CRANKCASE ASSY

NO.	PART NO.	EN DESCRIPTION	QTY	NOTES
1	26401N04F940	PIPE,link	1	
2	26400N04F000	VENTILATE PIPE COMP	1	
3	B0109060146A	BOLT,oil pressure indication	1	
4	26216N04F940	WASHER □	1	
5	26208N04F930	PIN	1	
6	B12016620550	BEARING	1	
7	B12016610450	BEARING	1	
8	26228N04F000	PLUG,oil limiting	2	
9	26321N04F000	OIL PIPE,soak oil	1	
10	26305N04F930	SPRING	1	
11	26307N04F000	O RING □	1	
12	206211.004082	DRAIN PLUG	1	
13	26300N03F000	FILTER WEB	1	
14	159035040020	RIGHT CRANKCASE COMP BLACK	1	
15	26113N04F000	CHAIN PLATE	1	
16	26207N04F000	BOLT	1	



E12 CRANKSHAFT,CONNECTING ROD,PISTON ASSY

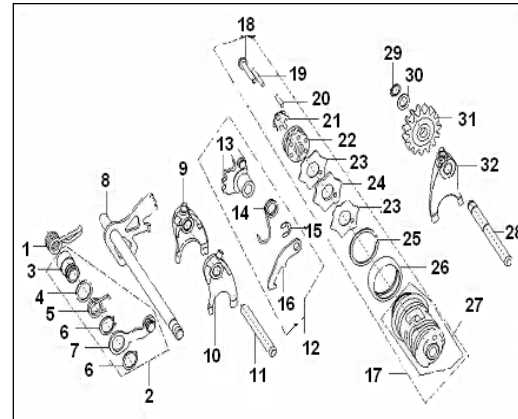
NO.	PART NO.	EN DESCRIPTION	QTY	NOTES
1	15230N04F000	LOCK NUT	1	
2	15233N04F930	WASHER (20-GB710-88)	1	
3	15234N04F000	WASHER (35-GB710-88)	1	
4	15116N04F000	KEY	1	
5	15207N04F000	GEAR	1	
6	15117N04F000	PLATE, CHAIN	1	
7	B12016630653	BEARING	1	
8	15200N04F000	CRANKSHAFT COMP	1	
9	208300.030062	PISTON	2	
10	15105N04FF10	PIN, PISTON	2	
11	15106N04F930	CIRCLIP	4	
12	15120N04F000	RING ASSY.	2	
13	15232N04F000	SPROCKET,C/SHAFT TIMING(□)	1	
14	15238N04F000	SPROCKET,C/SHAFT TIMING(□)	1	
15	15228H03F000	NUT(M12X1.2)	1	
16	15209N04F920	WASHER (31X12.5X4)	1	
17	15101N03F000	KEY	1	
18	34122N04F000	WASHER (40X25.3X1)	1	
19	B12016630653	BEARING	1	
20	15212N04F000	CIRCLIP	3	



KEEWAY CRUISER 250 EFI

E13 GEAR SHIFT MECHANISM

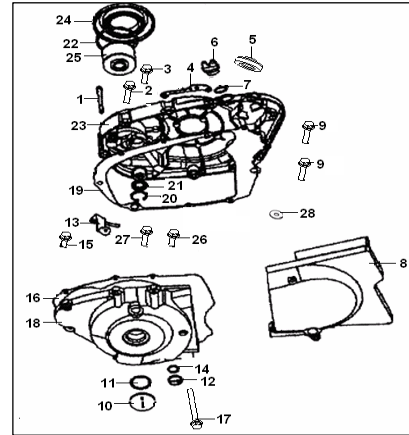
NO.	PART NO.	EN DESCRIPTION	QTY	NOTES
1	17701N04F000	SPRING	1	
2	17515N04F000	STOPPER ASSY	1	
3	17516N04F000	AXLE SET	1	
4	17517N04F930	WASHER	1	
5	17518N04F930	SPRING	1	
6	B08010001700	CIRCLIP	2	
7	17514N04F000	STOPPER	1	
8	17703N04F000	SHAFT	1	
9	17614N04F940	FORK□	1	
10	17616N04F940	FORK□	1	
11	17617N04F000	SHAFT□, shift fork	1	
12	17415N04F000	CLAW ASSY	1	
13	17417N04F000	GEAR□	1	
14	17418N04F930	SPRING	1	
15	17442N04F920	CIRCLIP	1	
16	17713N04F000	CLAW	1	
17	17600N04F000	CAM ASSY	1	
18	B02010503563	BOLT	1	
19	17601N04F000	PIN	1	
20	17618N04F000	PIN	5	
21	17624N04F000	SPRING WASHER	1	
22	17625N04F000	KICKSTAND	1	
23	17603N04F920	WASHER	2	
24	17602N04F000	PLATE	1	
25	17626N04F930	CIRCLIP	1	
26	17623N04F000	NEEDLE BEARING	1	
27	17604N04F000	CAM, gear shift	1	
28	17621N04F000	SHAFT□, shift fork	1	
29	B08010001000	CIRCLIP	3	
30	30300N04F000	WASHER	2	
31	19117N04F000	GEAR	1	
32	17615N04F940	FORK□	1	



KEEWAY CRUISER 250 EFI

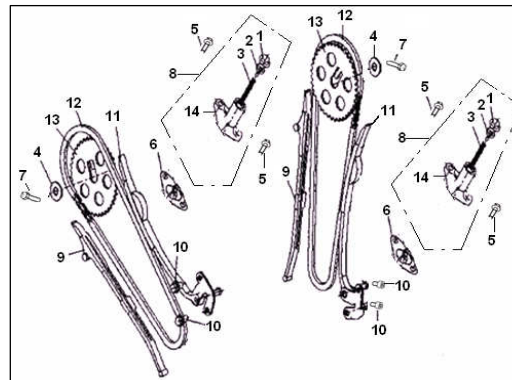
E14 CLUTCH COVER ASSY

NO.	PART NO.	EN DESCRIPTION	QTY	NOTES
1	301310609065	SCREW	1	
2	301310603565	SCREW	4	
3	301310602565	SCREW	14	
4	200195040000	BRACKET,right crankcase cover	1	
5	160083090000	OIL LEVEL INDICATOR ASSY	1	
6	207305.006472	PLUG	1	
7	14208N04F000	O RING	1	
8	207201.026472	COVER,sprocket	1	
9	301310602865	SCREW	2	
10	207204.006472	PLUG,cover magneto	1	
11	14116H03F000	O RING	1	
12	207205.001472	PLUG	1	
13	207213.005472	PLATE	1	
14	14115N04F000	O RING	1	
15	B01050601064	SCREW	2	
16	14230N04F000	GASKET,magneto cover	1	
17	B01070607064	SCREW	1	
18	207200.043472	Cover,magneto	1	
19	14229N04F000	GASKET,sprccket cover	1	
20	B08000002500	CIRCLIP	1	
21	14221N04F000	OIL SEAL	1	
22	B190106300C0	O RING	1	
23	169105040001	CLUTCH COVER	1	
24	207308.007472	CAP,strainer mark KEEWAY	1	
25	26308N04F000	STAINER	1	
26	34345J01F000	SCREW	2	
27	B02040603023	SCREW	3	
28	30351J01F000	WASHER	1	



E15 TIMING CHAIN & TENSIONER ASSY

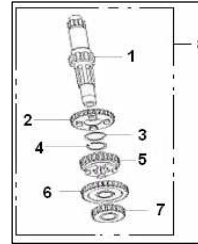
NO.	PART NO.	EN DESCRIPTION	QTY	NOTES
1	27450B08F000	BOLT	2	
2	27302N03F000	O RING	2	
3	27305N03F000	SPRING (I)	2	
4	27304N04F000	WASHER 19.5X8.2X2	2	
5	B01070601864	SCREW(M6X18)	4	
6	27304N03F000	GASKET	2	
7	27328N04F930	BOLT (M8X21.5)	2	
8	149035050020	TENSIONER COMP.	2	
9	27440N04F000	GUIDE CHAIN PLATE	2	
10	B02040601262	SCREW(M6X12)	4	
11	27430N04F000	GUIDE CHAIN PLATE	2	
12	27321N04F000	TIMING CHAIN	2	
13	30404N04F000	TIMING CHAIN SPROCKET BIG	2	
14	140081140010	SET TENSIONER ASSY	2	



KEEWAY CRUISER 250 EFI

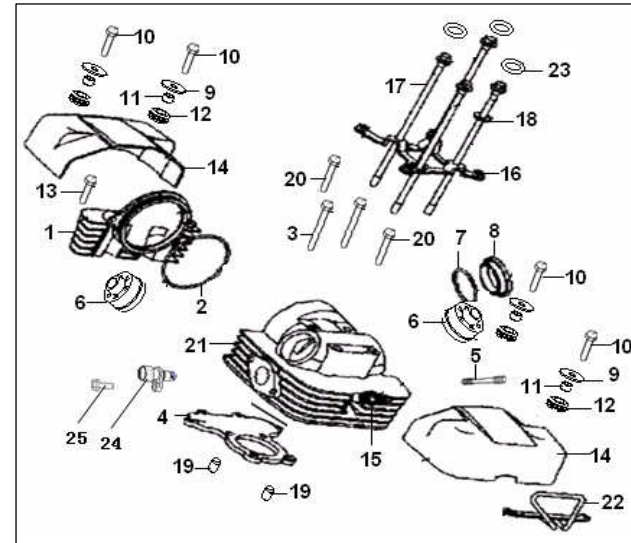
E16 PRINCIPAL AXLE ASSY

NO.	PART NO.	EN DESCRIPTION	QTY	NOTES
1	219145040000	SHAFT , DRIVEN	1	
2	17205N04F000	GEAR, 4th drive	1	
3	17223N04F000	WASHER	1	
4	17224N04F930	CIRCLIP	1	
5	17204N04F000	GEAR, 3rd drive	1	
6	17206N04F000	GEAR, 5th drive	1	
7	17202N04F000	GEAR, 2nd drive	1	
8	219135040000	DRIVEN SHAFT ASSY	1	



E17 CYLINDER HEAD ASSY

NO.	PART NO.	EN DESCRIPTION	QTY	NOTES
1	100055040030	RIGHT COVER, cylinder head black	1	
2	30505N04F000	O RING	1	
3	B01070611064	SCREW	2	
4	100025040030	GASKET, head cover black	1	
5	201216.001472	STUD BOLT	2	
6	30240N04F000	SEAL COMP, valve	2	
7	30116N04F000	O RING	2	
8	201326.003081	OBSERVE COVER	2	
9	30112N04F940	WASHER	4	
10	B01070602064	SCREW	4	
11	30534N04F910	CONDUIT	4	
12	30111N04F000	GASKET,seal	4	
13	B01070602564	SCREW	2	
14	201300.018081	HEAD COVER COMP	2	
15	299075040001	SPARK PLUG	1	CR7HSA
16	30320N04F910	FIXTURE	1	
17	201313.006472	MOUNT	4	
18	30515N04F000	WASHER	1	
19	26208J01F000	PIN, DOWEL	2	
20	B01070604064	SCREW	2	
21	109055040013	CLINDER HEAD BLACK	1	
22	100015040000	SUSPENDER COMP	1	
23	26117J01F000	O RING	3	
24	100015130000	SENSOR	1	
25	B01070501264	BOLT M5×12	1	



E18 CYLINDER ASSY

NO.	PART NO.	EN DESCRIPTION	QTY	NOTES
1	139015040070	CYLINDER MACHINING ASSY BLACK	1	
2	27102N04F000	GASKET,cylinder	1	
3	26208J01F000	PIN,POWEL	2	

